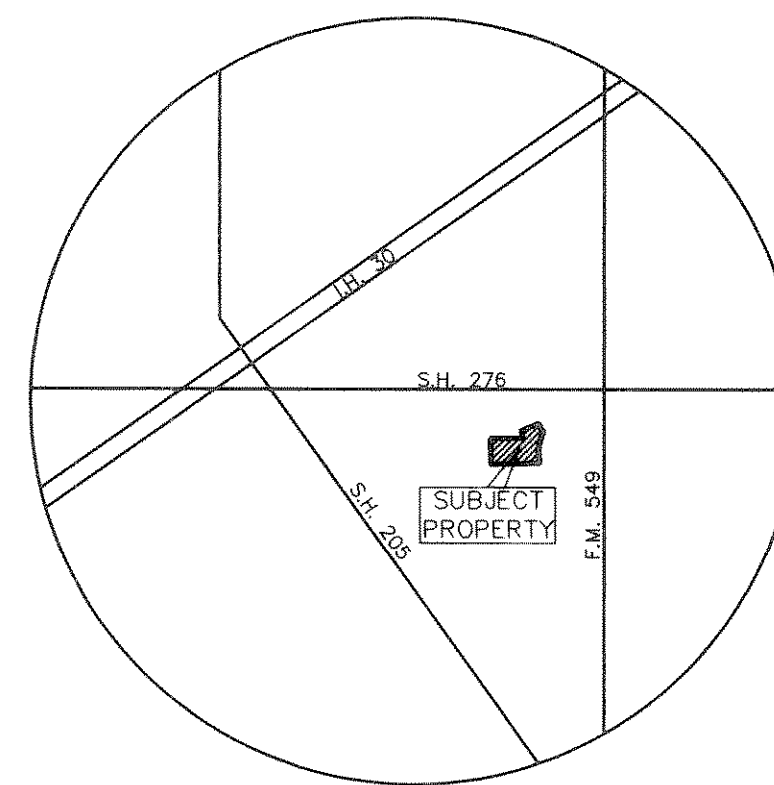


CONSTRUCTION PLANS FOR LOFLAND FARMS

PHASE 4

LOFLAND FARMS, PHASE 4



LOCATION MAP

ALL CONTRACTORS TO USE STANDARD DETAILS
PER CITY OF ROCKWALL.

SHEET INDEX

- COVER SHEET
- FINAL PLAT
- 1. DRAINAGE AREA MAP
- 2. DRAINAGE CALCULATIONS
- PAVING PLANS & PROFILES
- 3. FIELDCREST DRIVE STA. 0+00 TO 7+00
 - ALLEY "1" STA. 0+00 TO 3+43.44
 - ALLEY "2" STA. 4+00 TO 7+51.55
- 4. FIELDCREST DRIVE STA. 7+00 TO STA. 15+31.27
 - ALLEY "3" STA. 1+00 TO STA. 7+23.66
- 5. TEAGLE DRIVE STA. 0+00 TO STA. 9+00
 - ALLEY "4" STA. 0+00 TO STA. 4+00
 - ALLEY "5" STA. 0+00 TO STA. 5+71.68
- 6. TEAGLE DRIVE STA. 9+00 TO STA. 13+37.49
 - ALLEY "4" STA. 4+00 TO STA. 11+96.91
- 7. PAINT CREEK COURT STA. 0+00 TO STA. 4+75.54
 - ALLEY "2" STA. 0+00 TO STA. 4+00
 - ALLEY "3" STA. 0+00 TO STA. 1+00
- 8. SUGAR VALLEY ROAD STA. 0+00 TO STA. 1+85.11
- ALLEY PROFILES
- 9. ALLEY "1" STA. 0+00 TO STA. 3+43.44
- ALLEY "2" STA. 0+00 TO STA. 7+36.92
- 10. ALLEY "3" STA. 0+00 TO STA. 7+06.16
- ALLEY "5" STA. 0+00 TO STA. 5+57.18
- 11. ALLEY "4" STA. 0+00 TO STA. 11+82.41
- 12. STORM SEWER PLAN
- 13. STORM SEWER PLAN
- STORM SEWER PROFILES
- 14. LINE 1 & LINE 9
- 15. LINE 3, LINE 4 & LINE 6
- 16. LINE 5 & LINE 8
- 17. WATER & SANITARY SEWER PLAN
- SANITARY SEWER PROFILES
- 18. LINE A STA. 0+00 TO STA. 13+00
- 19. LINE B STA. 0+00 TO STA. 4+90.50
- LINE C STA. 0+00 TO STA. 1+43.62
- 20. LOT GRADING PLAN
- 21. LOT GRADING PLAN
- 22. STORM WATER POLLUTION PREVENTION PLAN
- 23. STORM WATER POLLUTION PREVENTION PLAN -DETAILS
- 24. TREESCAPE PLAN - REMOVAL & PLANTING
- 24A. SCREENING & LANDSCAPE PLAN

CITY OF ROCKWALL

ROCKWALL COUNTY, TEXAS

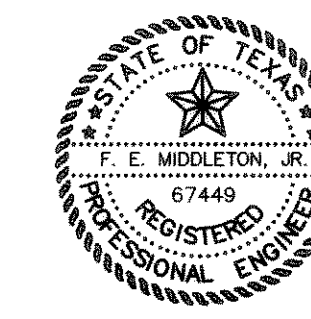
NOVEMBER 19, 2001

DEVELOPER:

CONTINENTAL HOMES
621 WEST COLLEGE STREET
GRAPEVINE, TEXAS 76051

AS BUILT
Winkelmann & Associates, Inc. hereby states that the
plans to the best of our knowledge is "As Built."
Modifications from the originally approved construction
documents have been made as per information provided by
the contractor. Winkelmann & Associates, Inc. does not
warrant as to the correctness or quality of construction as no
survey was performed and confirmed.
F.E. Middleton, Jr. 11-19-01
F. E. MIDDLETON, JR. DATE

THESE CONSTRUCTION PLANS WERE PREPARED
UNDER THE RESPONSIBLE SUPERVISION OF
F.E. MIDDLETON, JR., REGISTERED PROFESSIONAL
ENGINEER NO. 67449.
THE SEAL APPEARING ON THIS
DOCUMENT WAS AUTHORIZED BY
F.E. MIDDLETON, JR., P.E. #67449



**Winkelmann
& Associates, Inc.**

CONSULTING CIVIL ENGINEERS ■ SURVEYORS
6750 HILLCREST PLAZA DRIVE, SUITE 100 (972) 490-7090
DALLAS, TEXAS 75230 (972) 490-7099 FAX

C:\RUSSELL\2002\24cov.dwg Mon Nov 19 11:13:23 2001 RUSSELL