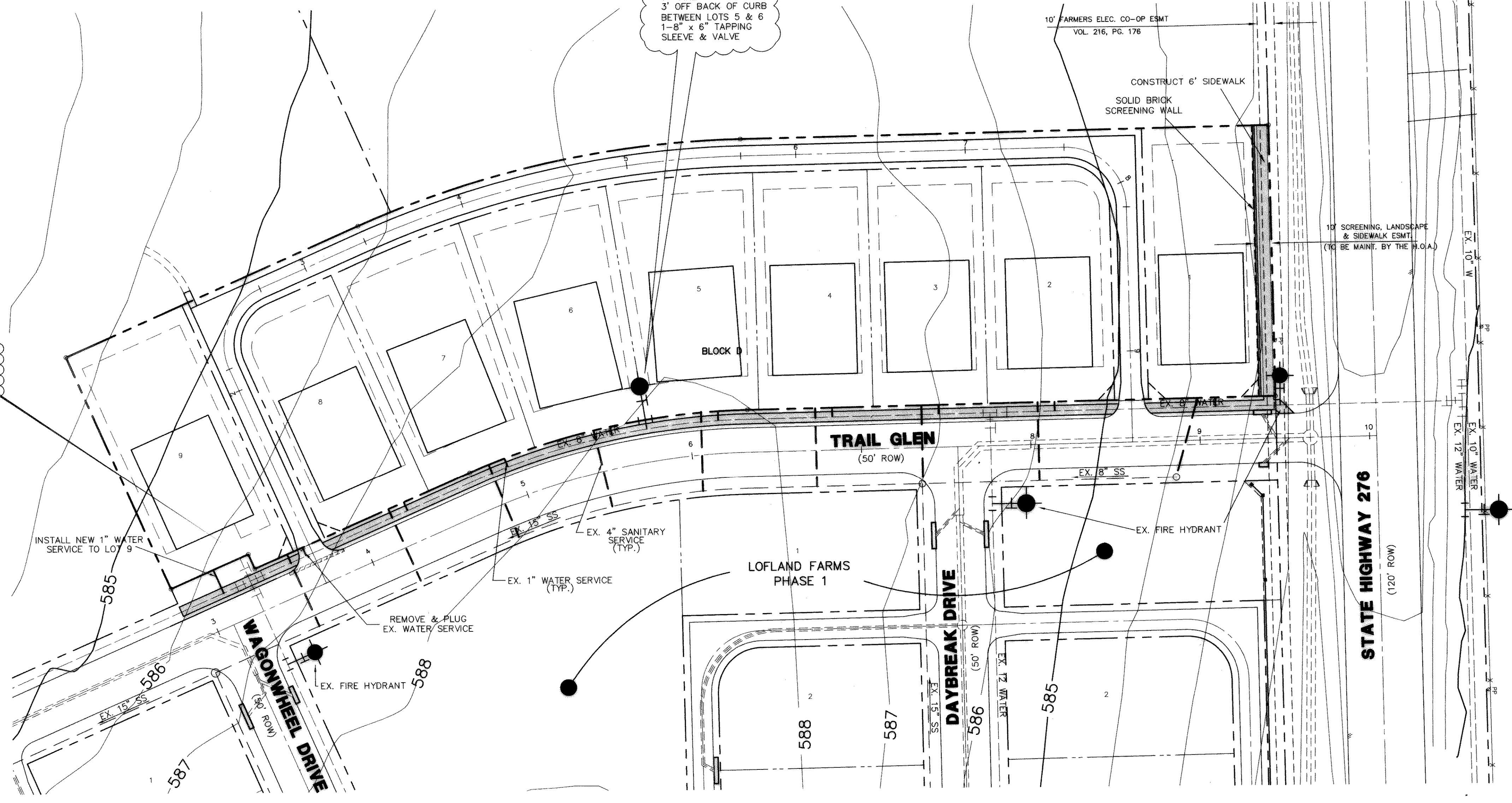


CONTRACTOR TO REMOVE EXIST. 8" GATE VALVE & PIPE. PLUG & BLOCK WEST SIDE OF EXIST. 8" CROSS.

INSTALL:
1- FIRE HYDRANT
3' OFF BACK OF CURB
BETWEEN LOTS 5 & 6
1-8" x 6" TAPPING
SLEEVE & VALVE



NOTE:
WATER & SEWER SERVICES WERE INSTALLED
UNDER LOFLAND FARMS, PHASE 1

THESE CONSTRUCTION PLANS WERE PREPARED UNDER THE RESPONSIBILITY OF REGISTERED PROFESSIONAL ENGINEER NO. 67449
F.E. Middleton, Jr. 9.19.01

THE SEAL APPEARING ON THIS DOCUMENT WAS AUTHORIZED BY F.E. MIDDLETON, JR., P.E. #67449

W.H. BAIRD SURVEY, ABSTRACT NO. 25
CITY OF ROCKWALL
ROCKWALL COUNTY, TEXAS
CONTINENTAL HOMES
621 WEST COLLEGE STREET
GRAPEVINE, TEXAS, 76051

**LOFLAND FARMS - PHASE 3
WATER & SEWER PLAN**

Scale : 1"=40' Date : 6/20/01
Designed By : RB
Drawn By : MK
Checked By : FEM
File : 320023WSI.DWG View :
Project No. : 32002.01

**SHEET
4
OF
8**

NO.	DATE	REVISION	APPROV.

Winkelmann & Associates, Inc.
CONSULTING CIVIL ENGINEERS • SURVEYORS
6749 Highway 276, Suite 105
Dallas, Texas 75230
www.winkelmann.com
(972) 482-7096 FAX

ASBUILT
Winkelmann & Associates, Inc. hereby states that this plan to the best of our knowledge is "As Built." Modifications from the originally approved construction documents have been made as per information provided by the contractor. Winkelmann & Associates, Inc. does not certify as to the correctness or quality of construction as no field inspection was performed.
F.E. Middleton, Jr. 7-12-02
WINKELMANN & ASSOCIATES, INC. DATE

BENCHMARK: ELEV. = 600.69
CITY OF ROCKWALL R-19
BRASS MONUMENT AT THE N/W CORNER OF
SILVERVIEW & DIAMOND WAY, 500' ± SOUTH OF
S.H. 276.

BENCHMARK: ELEV. = 583.56
R.R. SPIKE SET IN THE CENTERLINE OF S.H. 276
3600± WEST OF F.M. 549