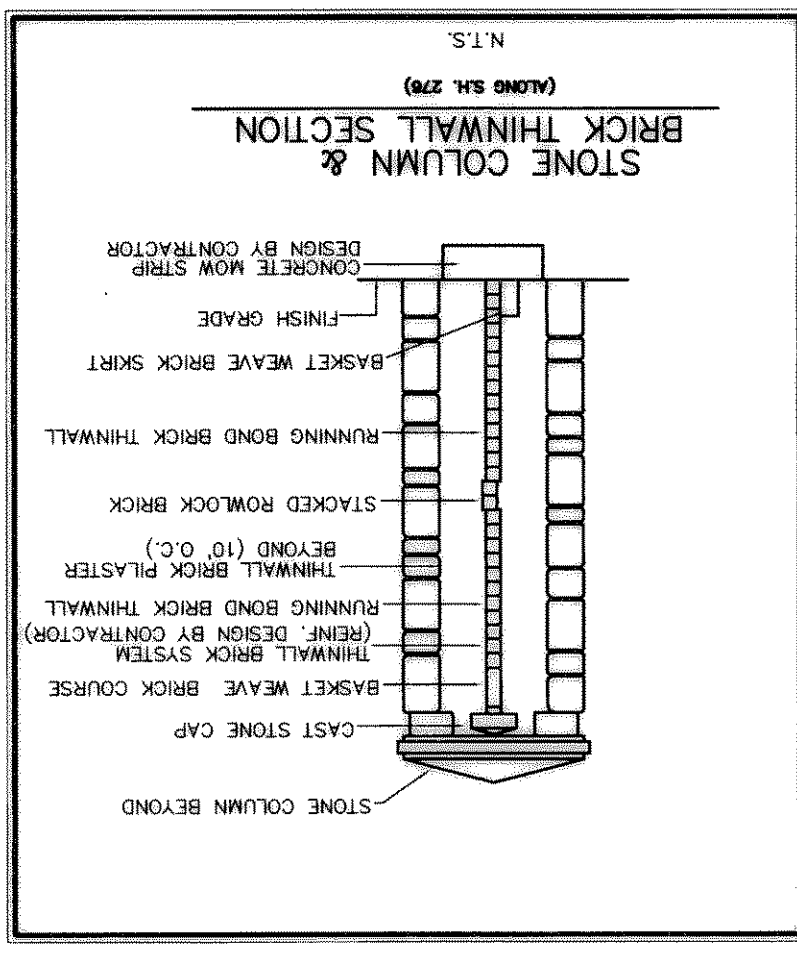
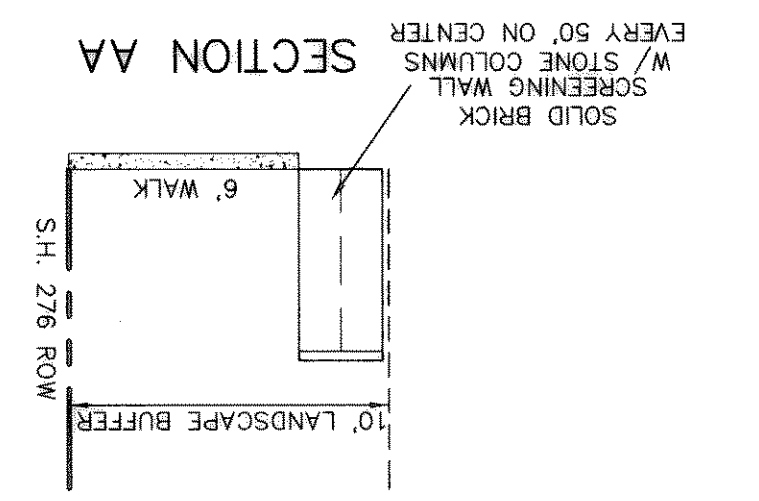


BENCHMARK:
 CITY OF ROCKWALL R-19
 BRASS MONUMENT AT THE N/W CORNER OF
 SILVERVIEW & DIAMOND WAY, 500' ± SOUTH OF
 S.H. 276.
 ELEV. = 600.69

BENCHMARK:
 R.R. SPIKE SET IN THE CENTERLINE OF S.H. 276
 WEST OF F.M. 549
 ELEV. = 583.56



NOTES:
 SCREENING WALL TO END AT VISIBILITY CLIP,
 AT INTERSECTION OF TRAIL GLEN & S.H.276



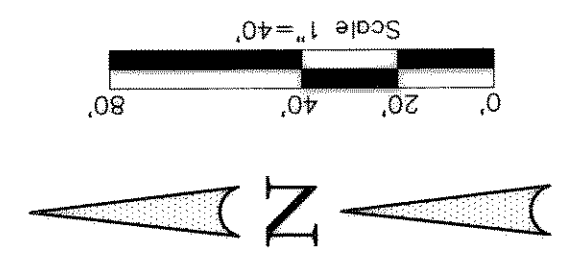
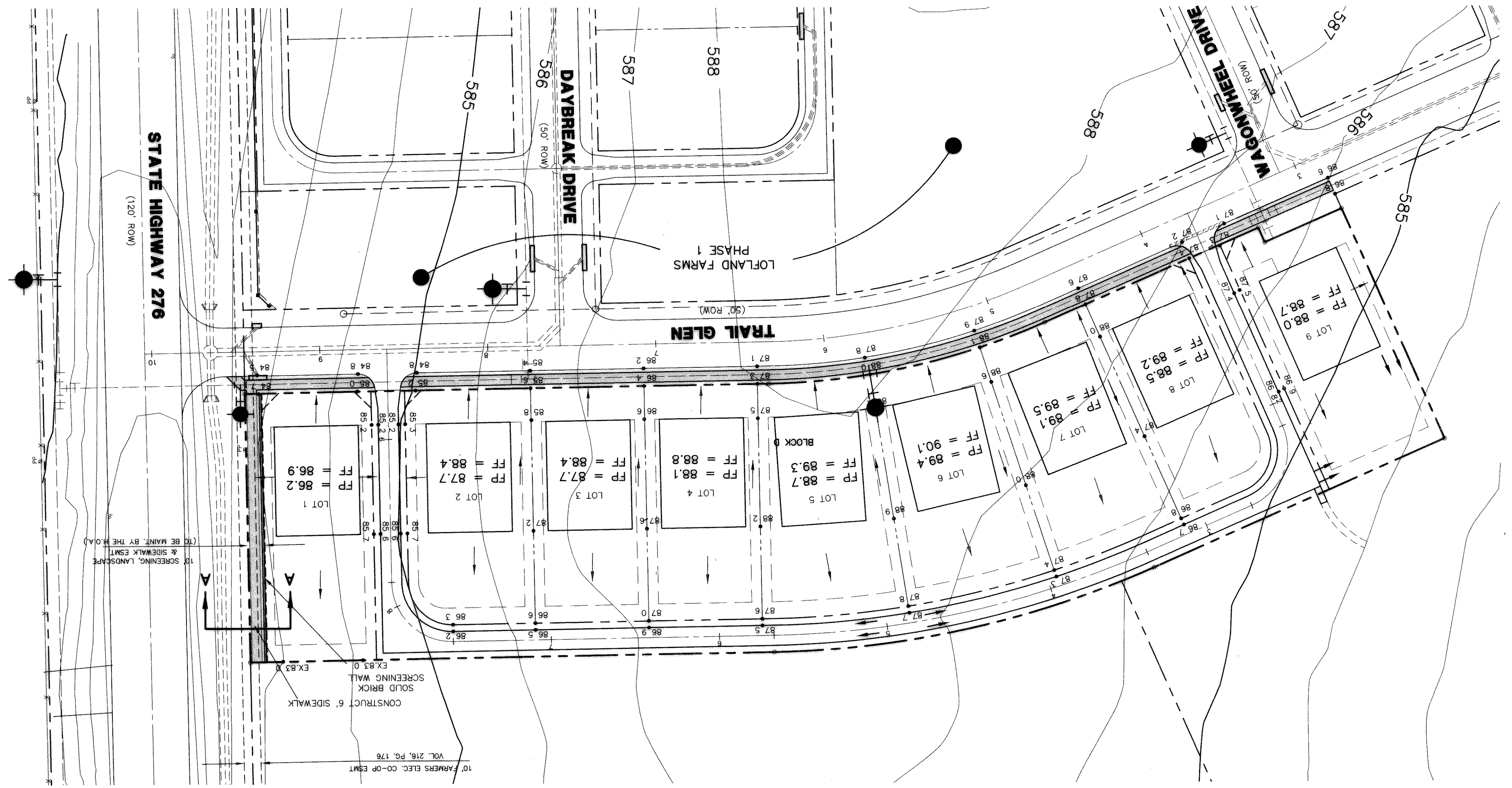
LEGEND

FP FINISHED PAD GRADE
 F FINISHED FLOOR GRADE
 FLOW ARROWS
 PROPOSED SPOT ELEVATIONS
 EXIST. CONTOURS

WINKELMANN & ASSOCIATES, INC.
 9/12/02

THESE CONSTRUCTION PLANS WERE PREPARED
 UNDER THE RESPONSIBLE SUPERVISION OF SENIOR
 PROFESSIONAL ENGINEER NO. 67449
 F.E. MIDDLETON, JR., P.E. #67449

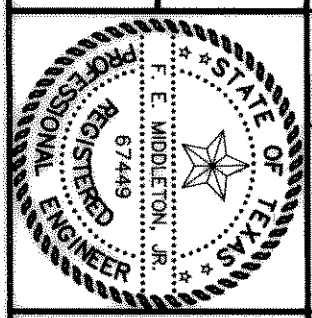
THE SEAL APPEARING ON THIS
 DOCUMENT WAS AUTHORIZED BY
 F.E. MIDDLETON, JR., P.E. #67449



Scale: 1"=40' Date: 6/20/01
 Designed By: RB
 Drawn By: MK
 Checked By: FEM
 File: 3200231.GIOWG View:
 Project No.: 32002.01

LOFLAND FARMS - PHASE 3
LOT GRADING PLAN

W.H. BAIRD SURVEY, ABSTRACT NO. 25
 CITY OF ROCKWALL
 ROCKWALL COUNTY, TEXAS
 CONTINENTAL HOMES
 621 WEST COLLEGE STREET
 GRAPEVINE, TEXAS 76051



Winkelmann & Associates, Inc.
 CONSULTING CIVIL ENGINEERS & SURVEYORS
 6250 Industrial Plaza Drive, Suite 100
 Dallas, Texas 75248
 (972) 465-7300
 (972) 465-7300 FAX

NO.	DATE	REVISION	APPROV.