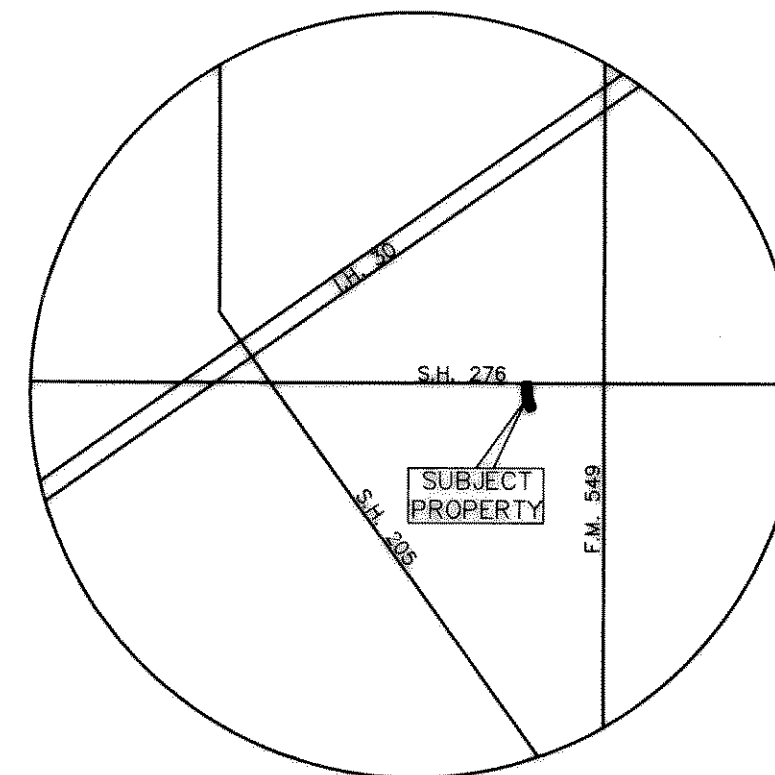


# CONSTRUCTION PLANS FOR LOFLAND FARMS

## PHASE 3

LOFLAND FARMS, PHASE 3



LOCATION MAP  
N.T.S.

THE STANDARD DETAILS FOR PUBLIC WORKS CONSTRUCTION FOR THE CITY OF ROCKWALL, ARE HEREBY MADE A PART OF THESE CONSTRUCTION PLANS BY THIS NOTE. EACH CONTRACTOR IS TO PURCHASE A SET OF DETAILS FROM THE CITY OF ROCKWALL PRIOR TO STARTING CONSTRUCTION.

ASBUILT  
Winkelmann & Associates, Inc. hereby states that this plan, to the best of our knowledge is "As Built". Modifications from the originally approved construction documents have been made as per information provided by the contractor. Winkelmann & Associates, Inc. does not certify as to the correctness or quality of construction or the field work performed.  
*F.E. Middleton, Jr.* 7-12-01  
DATE  
WINKELMANN & ASSOCIATES, INC.

### SHEET INDEX

- COVER SHEET
- FINAL PLAT
- 1. GENERAL NOTES
- 2. DRAINAGE AREA MAP & CALCULATIONS
- PAVING PLANS & PROFILES
- 3. ALLEY "1" STA. 0+00 TO STA. 9+29.36
- 4. WATER & SANITARY SEWER PLAN
- 5. LOT GRADING PLAN
- 6. STORM WATER POLLUTION PREVENTION PLAN
- 7. STORM WATER POLLUTION PREVENTION PLAN -DETAILS
- 8. TREESCAPE PLAN - REMOVAL & PLANTING

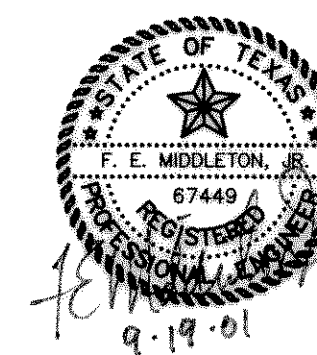
# CITY OF ROCKWALL ROCKWALL COUNTY, TEXAS

## SEPTEMBER 19, 2001

### DEVELOPER:

CONTINENTAL HOMES  
621 W. COLLEGE STREET  
GRAPEVINE, TEXAS 76051

THESE CONSTRUCTION PLANS WERE PREPARED UNDER THE RESPONSIBLE SUPERVISION OF F.E. MIDDLETON, JR., REGISTERED PROFESSIONAL ENGINEER NO. 67449.  
THE SEAL APPEARING ON THIS DOCUMENT WAS AUTHORIZED BY F.E. MIDDLETON, JR., P.E. #67449



**Winkelmann & Associates, Inc.**

CONSULTING CIVIL ENGINEERS ■ SURVEYORS  
6750 HILLOREST PLAZA DRIVE, SUITE 100 (972) 490-7090  
DALLAS, TEXAS 75230 (972) 490-7099 FAX