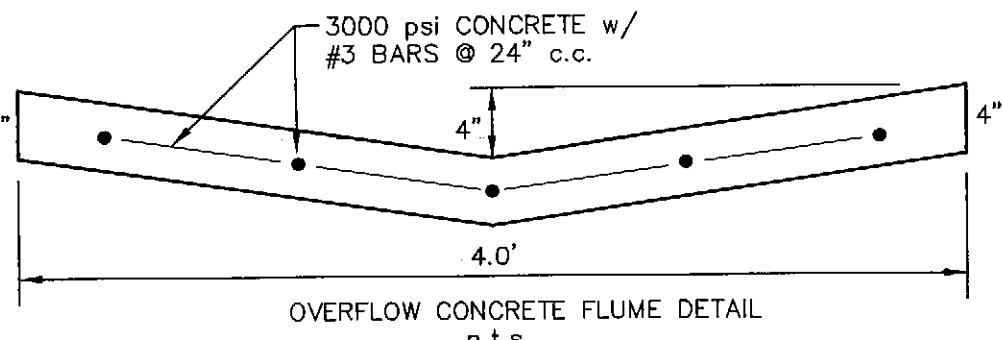


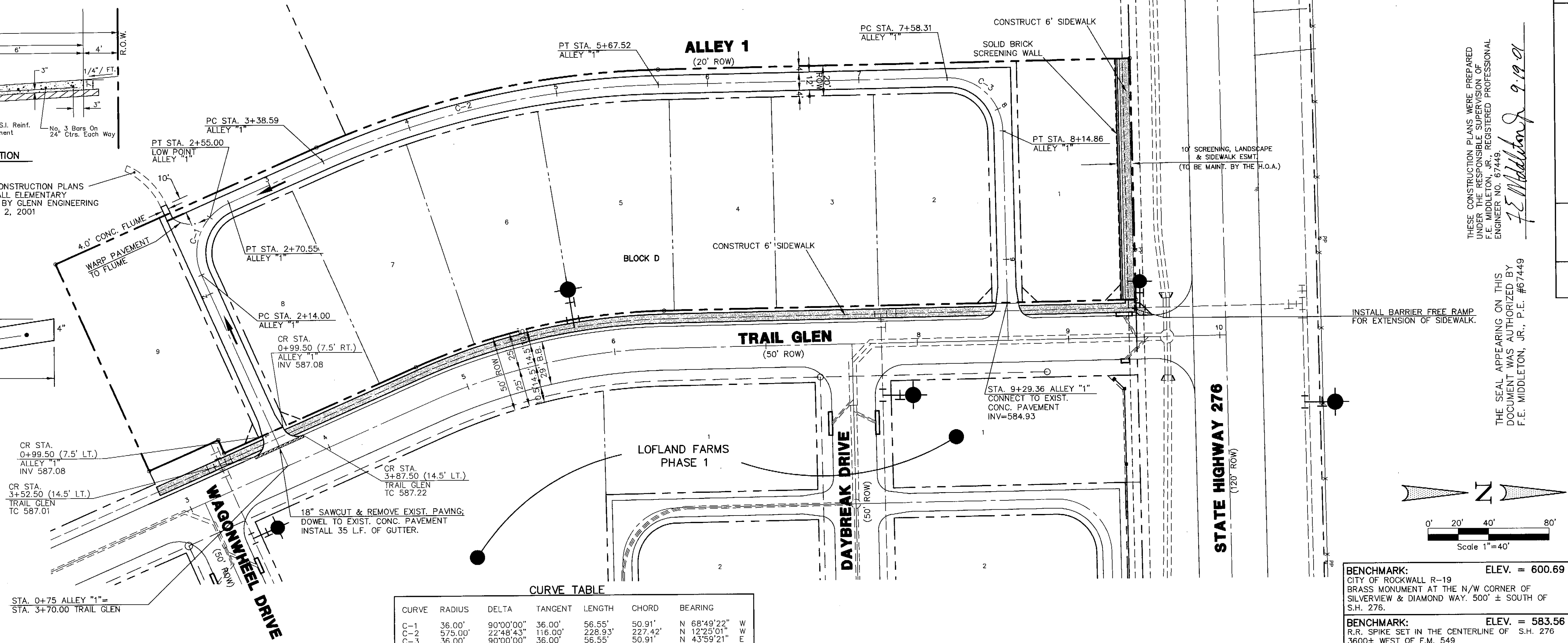
STANDARD 12' ALLEY SECTION
N.T.S.

REFER TO CONSTRUCTION PLANS FOR ROCKWALL ELEMENTARY SCHOOL #8, BY GLENN ENGINEERING DATED: MAY 2, 2001



OVERFLOW CONCRETE FLUME DETAIL
n.t.s.

- NOTE:
- 1) PAVEMENT FOR STREETS SHALL CONSIST OF 6" 3500 P.S.I. REINFORCED CONCRETE AND 6" LIME-STABILIZED SUBGRADE WITH 6" PARABOLIC CROWN.
 - 2) PAVEMENT FOR ALLEYS SHALL CONSIST OF 4000 P.S.I. REINFORCED CONCRETE AND 6" LIME-STABILIZED SUBGRADE WITH 5" INVERT. TYPICAL ALLEY SECTION WILL BE 7'-5"-7".
 - 3) CONTRACTOR TO RUN LIME SERIES BEFORE CONSTRUCTION.

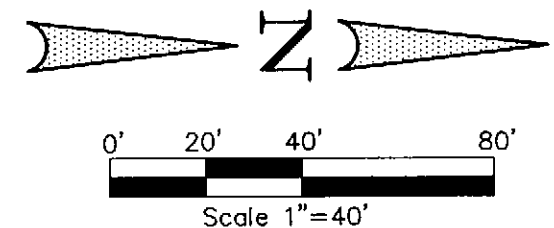
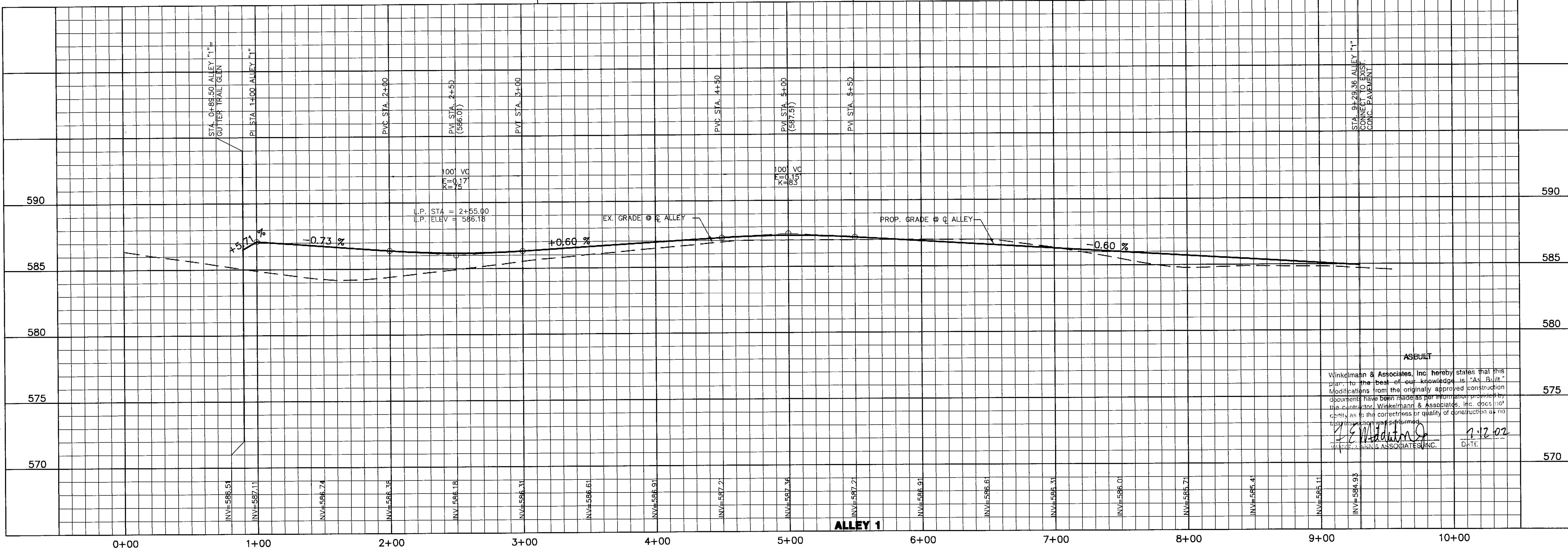


CURVE TABLE

CURVE	RADIUS	DELTA	TANGENT	LENGTH	CHORD	BEARING
C-1	36.00'	90°00'00"	36.00'	56.55'	50.91'	N 68°48'22" W
C-2	575.00'	22°48'43"	116.00'	228.93'	227.42'	N 12°23'01" W
C-3	36.00'	90°00'00"	36.00'	56.55'	50.91'	N 43°59'21" E

BENCHMARK: ELEV. = 600.69
CITY OF ROCKWALL R-19
BRASS MONUMENT AT THE N/W CORNER OF SILVERVIEW & DIAMOND WAY. 500' ± SOUTH OF S.H. 276.

BENCHMARK: ELEV. = 583.56
R.R. SPIKE SET IN THE CENTERLINE OF S.H. 276
3600± WEST OF F.M. 549



THESE CONSTRUCTION PLANS WERE PREPARED UNDER THE RESPONSIBLE SUPERVISION OF F.E. MIDDLETON, JR., REGISTERED PROFESSIONAL ENGINEER NO. 67449.

F.E. Middleton 9.19.01

THE SEAL APPEARING ON THIS DOCUMENT WAS AUTHORIZED BY F.E. MIDDLETON, JR., P.E. #67449

Winkelmann & Associates, Inc.
CONSULTING CIVIL ENGINEERS ■ SURVEYORS
6750 Hillcrest Plaza Drive, Suite 100
Dallas, Texas 75220
(972) 480-7000
www.winkelmanna.com

W.H. BAIRD SURVEY, ABSTRACT NO. 25
CITY OF ROCKWALL
ROCKWALL COUNTY, TEXAS
CONTINENTAL HOMES
621 WEST COLLEGE STREET
GRAPEVINE TEXAS, 76051

**LOFLAND FARMS - PHASE 3
PAVING PLAN & PROFILE
ALLEY 1**

Scale: 1" = 40' Date: 6/20/01
Designed By: RB
Drawn By: MK
Checked By: FEM
File: 320023P1.DWG View:
Project No.: 32002.01

ASBUILT
Winkelmann & Associates, Inc. hereby states that this plan is the best-of-our knowledge as "As-Built". Modifications from the originally approved construction documents have been made as for information purposes by the contractor, Winkelmann & Associates, Inc. does not certify as to the correctness or quality of construction as no field inspection was performed.

[Signature] 7.7.02
DATE