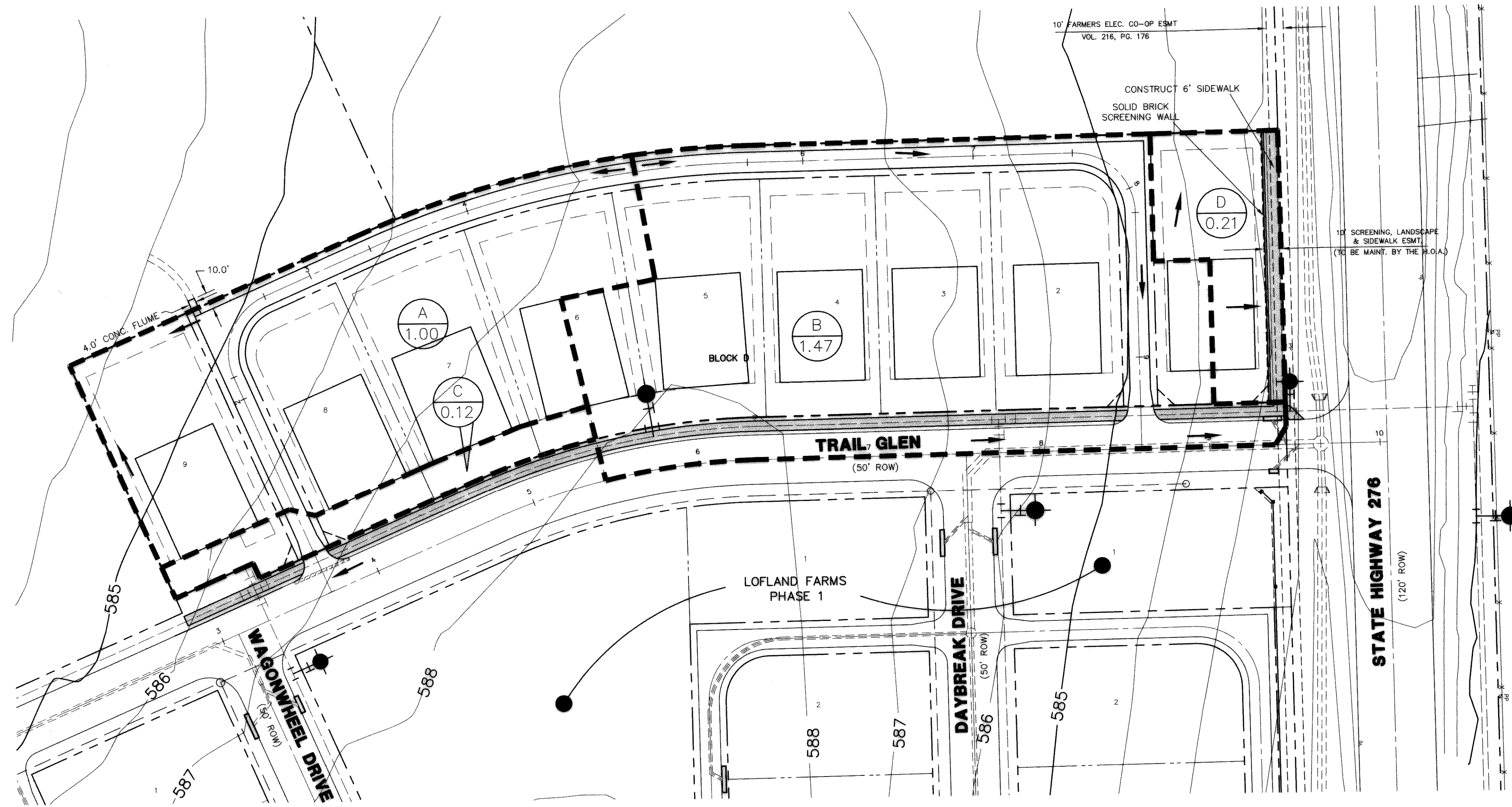


LEGEND

- A AREA DESIGNATION
- 0.45 AREA IN ACRES
- FLOW ARROWS
- DRAINAGE AREA BOUNDARY
- EX. INLETS
- EXIST. CONTOURS



THESE CONSTRUCTION PLANS WERE PREPARED
 UNDER THE RESPONSIBLE SUPERVISION OF
 F.E. MIDDLETON, JR., REGISTERED PROFESSIONAL
 ENGINEER NO. 67449
 THE SEAL APPEARING ON THIS
 DOCUMENT WAS AUTHORIZED BY
 F.E. MIDDLETON, JR., P.E. #67449
 9/19/01

AREA DESIGNATION	AREA (ACRES)	C	T _c (MIN)	I ₁₀ (IN/HR)	Q ₁₀ (CFS)	I ₁₀₀ (IN/HR)	Q ₁₀₀ (CFS)	COMMENTS
A	1.00	0.50	10	5.46	3.28	9.8	4.90	TO DOWNSTREAM - SEE GLENN ENGINEERING SCHOOL PLANS
B	1.47	0.50	10	5.46	2.19	9.8	7.20	TO EXIST. STORM SEWER SYSTEM (LOFLAND FARM PHASE 1) EXIST. CAPACITY 7.50 CFS
C	0.12	0.50	10	5.46	1.93	9.8	0.59	TO EXIST. STORM SEWER SYSTEM (LOFLAND FARM PHASE 1)
D	0.21	0.50	10	5.46	0.33	9.8	1.03	TO STATE HIGHWAY 276

BENCHMARK: ELEV. = 600.69
 CITY OF ROCKWALL R-19
 BRASS MONUMENT AT THE N/W CORNER OF
 SILVERVIEW & DIAMOND WAY, 500' ± SOUTH OF
 S.H. 276.
BENCHMARK: ELEV. = 583.56
 R.R. SPIKE SET IN THE CENTERLINE OF S.H. 276
 3600± WEST OF F.M. 549

ASBUILT
 Winkelman & Associates, Inc. hereby states that this
 plan, to the best of our knowledge is "As Built"
 Modifications from the originally approved construction
 documents have been made as per information provided by
 the contractor. Winkelman & Associates, Inc. does not
 certify as to the correctness or quality of construction as no
 field inspection was performed.

 WINKELMANN & ASSOCIATES, INC. DATE: 7/12/02

NO.	DATE	REVISION	APPROV.
Winkelman & Associates, Inc. CONSULTING CIVIL ENGINEERS • SURVEYORS 8700 Wilcrest Place, Suite 100, Dallas, Texas 75220 (972) 492-7899 FAX www.winkelman.com			
W.H. BAIRD SURVEY, ABSTRACT NO. 25 CITY OF ROCKWALL ROCKWALL COUNTY, TEXAS CONTINENTAL HOMES 621 WEST COLLEGE STREET GRAPEVINE, TEXAS, 76051			
LOFLAND FARMS - PHASE 3 DRAINAGE AREA MAP & CALCULATIONS			
Scale: 1"=40'	Date: 6/20/01		
Designed By: RB	Drawn By: MK		
Checked By: FEM	File: 320023DAM.DWG		
		Project No.:	32002.01
SHEET 2 OF 8			