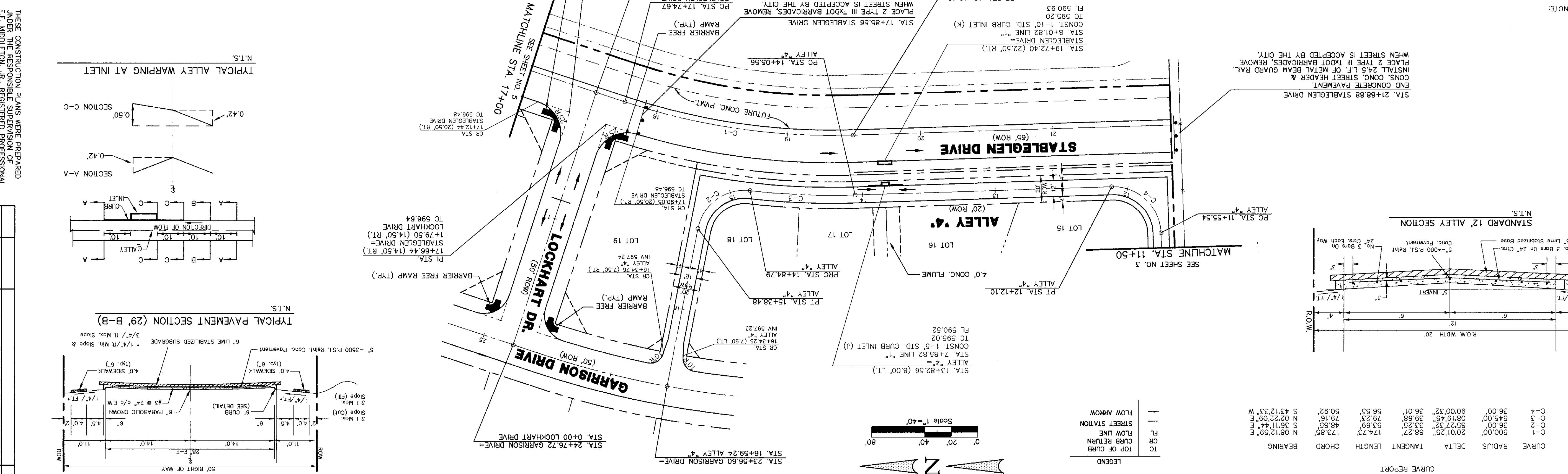


NOTE:  
 1) PAVEMENT FOR STREETS SHALL CONSIST OF 6" 2500 P.S.I. REINFORCED CONCRETE AND 6" LIME-STABILIZED SUBGRADE WITH 6" PARABOLIC CROWN.  
 2) PAVEMENT FOR ALLEYS SHALL CONSIST OF MIN. 5" 4000 P.S.I. REINFORCED CONCRETE AND 6" LIME-STABILIZED SUBGRADE WITH 5" INVERT. TYPICAL ALLEY SECTION WILL BE 7'-5"-7".  
 INLET TOP AT PAVING STATION 13+82.56 ALLEY "4"  
 N=7017309.8395  
 E=2605322.9637  
 ELEV.=591.31

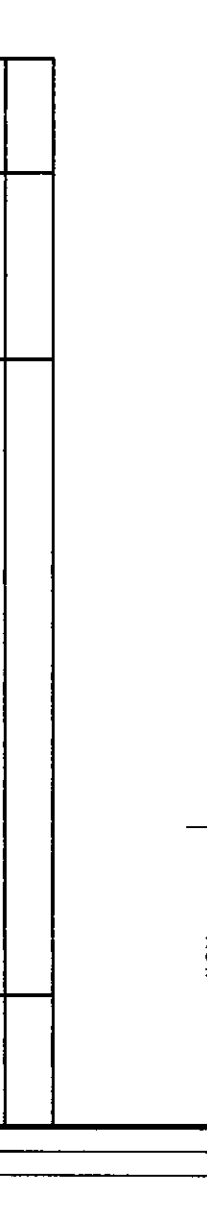


CURVE	RADIUS	DELTA	TANGENT	LENGTH	CHORD	BEARING
C-1	500.00'	20°1'25"	88.27'	174.73'	173.85'	N 08°12'59" E
C-2	35.00'	88°27'32"	33.25'	53.69'	48.85'	S 36°11'44" E
C-3	545.00'	08°19'45"	39.68'	79.23'	79.16'	N 02°22'09" E
C-4	35.00'	90°00'32"	35.01'	56.55'	50.92'	S 43°12'33" W

THESE CONSTRUCTION PLANS WERE PREPARED UNDER THE RESPONSIBLE SUPERVISION OF F.E. MIDDLETON, JR., REGISTERED PROFESSIONAL ENGINEER NO. 67449.

NO.	DATE	REVISION	APPROV.

W.H. BAIRD, SURVEY, ABSTRACT NO. 25  
 CITY OF ROCKWALL, TEXAS  
 621 WEST COLLEGE STREET  
 GRAPEVINE, TEXAS 76051



**Winkelmann & Associates, Inc.**  
 CONSULTING CIVIL ENGINEERS & SURVEYORS  
 6750 Walnut Ridge Drive, Suite 100  
 Rockwall, Texas 75087  
 (972) 480-7999  
 www.winkelmann.com

Scale: 1" = 40'  
 Date: 02/14/01  
 Designed By: RB  
 Drawn By: DA  
 Checked By: FEM  
 View: Project No.: 32001P14

STABLEGLEN DRIVE STA. 17+00 TO END  
 PAVING PLAN  
 ALLEY #4 STA. 11+50.00 TO END  
 LOFLAND FARMS, PHASE 2

THE SEAL APPEARING ON THIS DOCUMENT WAS AUTHORIZED BY F.E. MIDDLETON, JR., P.E. #67449

BENCHMARK: ELEV. = 583.56  
 3600' WEST OF F.M. 549  
 FOR SPINE SET IN THE CENTERLINE OF S.H. 276  
 S.H. 276  
 BRASS MONUMENT AT THE N/W CORNER OF CITY OF ROCKWALL R-19  
 BENCHMARK: ELEV. = 600.69

ASSAULT  
 10-20-01  
 WINKELMANN & ASSOCIATES, INC.