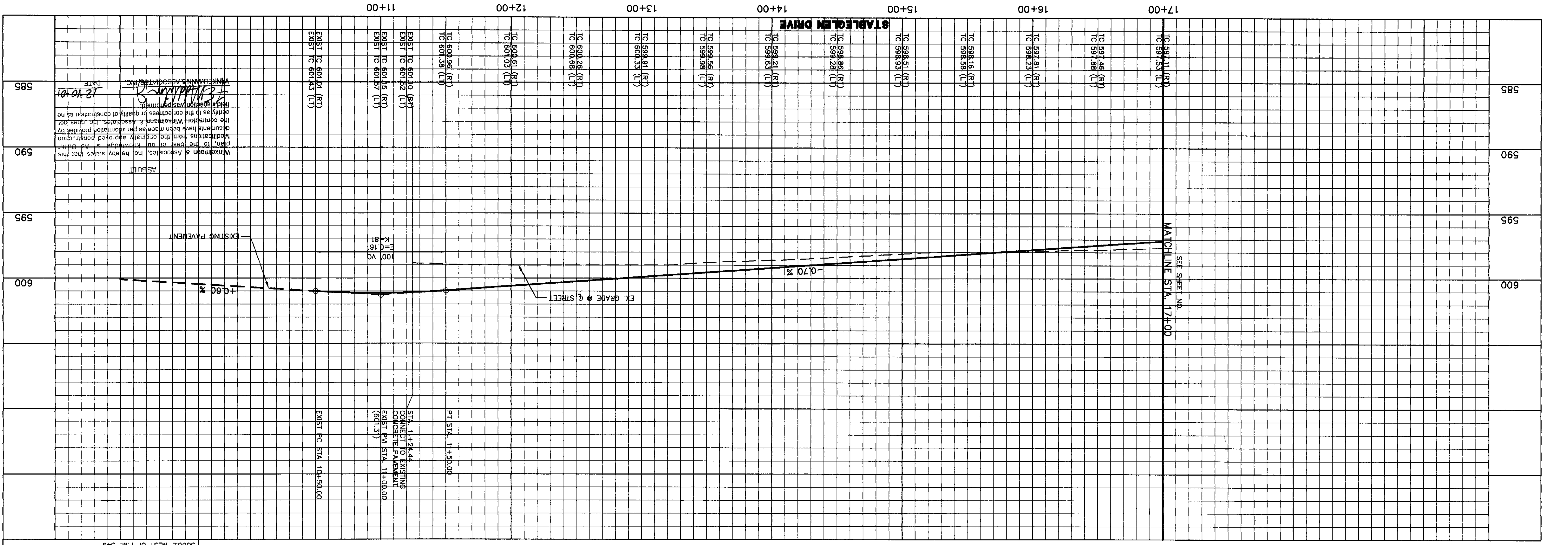
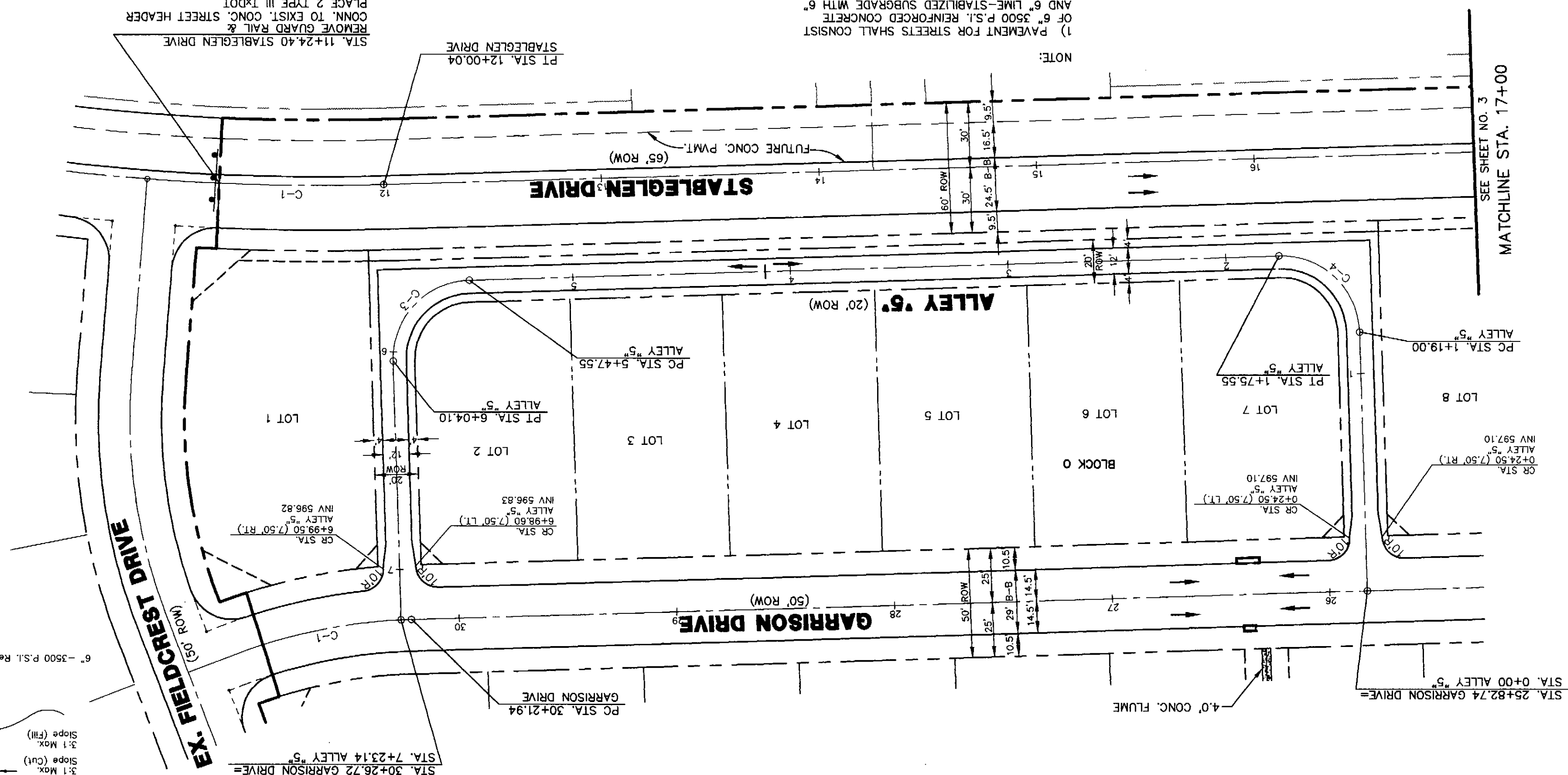
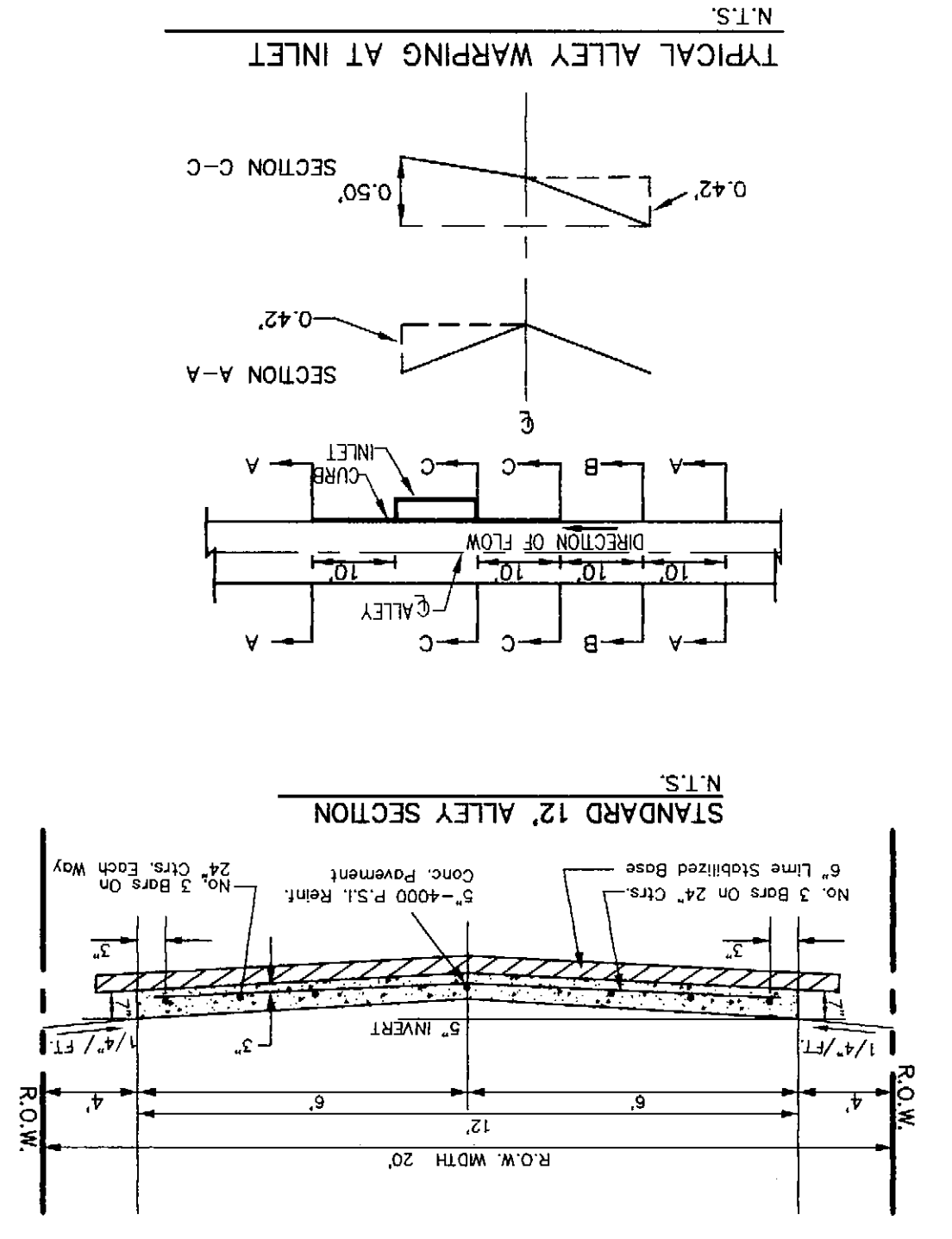


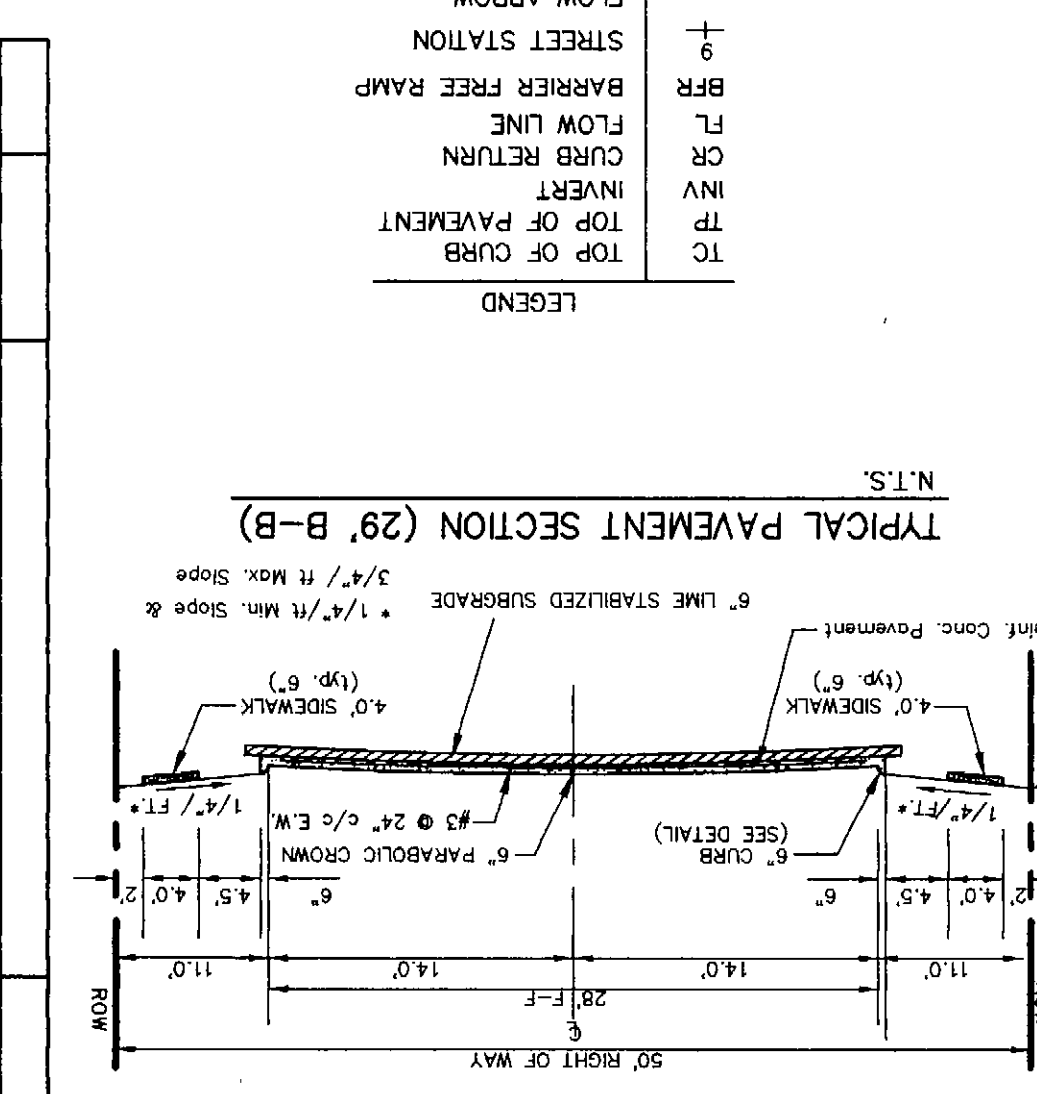
CURVE TABLE

CURVE	RADIUS	DELTA	TANGENT LENGTH	CHORD	BEARINGS
C-1	250.00'	155.43°	59.90'	69.90'	S 101°15'50" W
C-2	1000.00'	04°19'55"	37.82'	75.60'	N 20°23'39" E
C-3	36.00'	90°00'00"	36.00'	50.91'	S 26°48'18" E
C-4	36.00'	90°00'00"	36.00'	50.91'	S 63°17'42" W



NOTE:
 1) PAVEMENT FOR STREETS SHALL CONSIST OF 6" 2500 P.S.I. REINFORCED CONCRETE AND 6" LIME-STABILIZED SUBGRADE WITH 6" PARABOLIC CROWN.
 2) PAVEMENT FOR ALLEYS SHALL CONSIST OF MIN. 6" 4000 P.S.I. REINFORCED CONCRETE AND 6" LIME-STABILIZED SUBGRADE WITH 5" INVERT. TYPICAL ALLEY SECTION WILL BE 7'-5"-7".

BENCHMARK: ELEV. = 600.69
 BRASS MONUMENT AT THE N/W CORNER OF CITY OF ROCKWALL R-19 SILVERVIEW & DIAMOND WAY, 500' ± SOUTH OF S.H. 276.
 BENCHMARK: ELEV. = 583.56
 R.R. SPIKE SET IN THE CENTERLINE OF S.H. 276 3600± WEST OF F.M. 549



LEGEND
 TC TOP OF CURB
 TP TOP OF PAVEMENT
 INV INVERT
 CUR CURB RETURN
 FL FLOW LINE
 ST STREET STATION
 BFR BARRIER FREE RAMP
 FA FLOW ARROW

THESE CONSTRUCTION PLANS WERE PREPARED UNDER THE RESPONSIBLE SUPERVISION OF W.H. BAIRD, SURVEY ABSTRACT NO. 25 CITY OF ROCKWALL, TEXAS REGISTERED PROFESSIONAL ENGINEER NO. 274.

Scale: 1" = 40'
 Date: 02/14/01
 Designed By: RB
 Drawn By: DA
 Checked By: FEM
 File: 3200P13.DWG View:
 Project No.: 32001.01

PAVING PLAN & PROFILE
 STABLEGLEN DRIVE STA. 11+24.44 TO 17+00
 PAVING PLAN
 ALLEY 5'
 LOFLAND FARMS, PHASE 2

W.H. BAIRD, SURVEY ABSTRACT NO. 25
 CITY OF ROCKWALL, TEXAS
 CONTINENTAL HOMES
 621 WEST COLLEGE STREET
 GRAPEVINE, TEXAS 76051

Winkelmann & Associates, Inc.
 CONSULTING CIVIL ENGINEERS & SURVEYORS
 6720 Highway 170, Suite 100
 Rockwall, Texas 75087
 (972) 462-7000 FAX