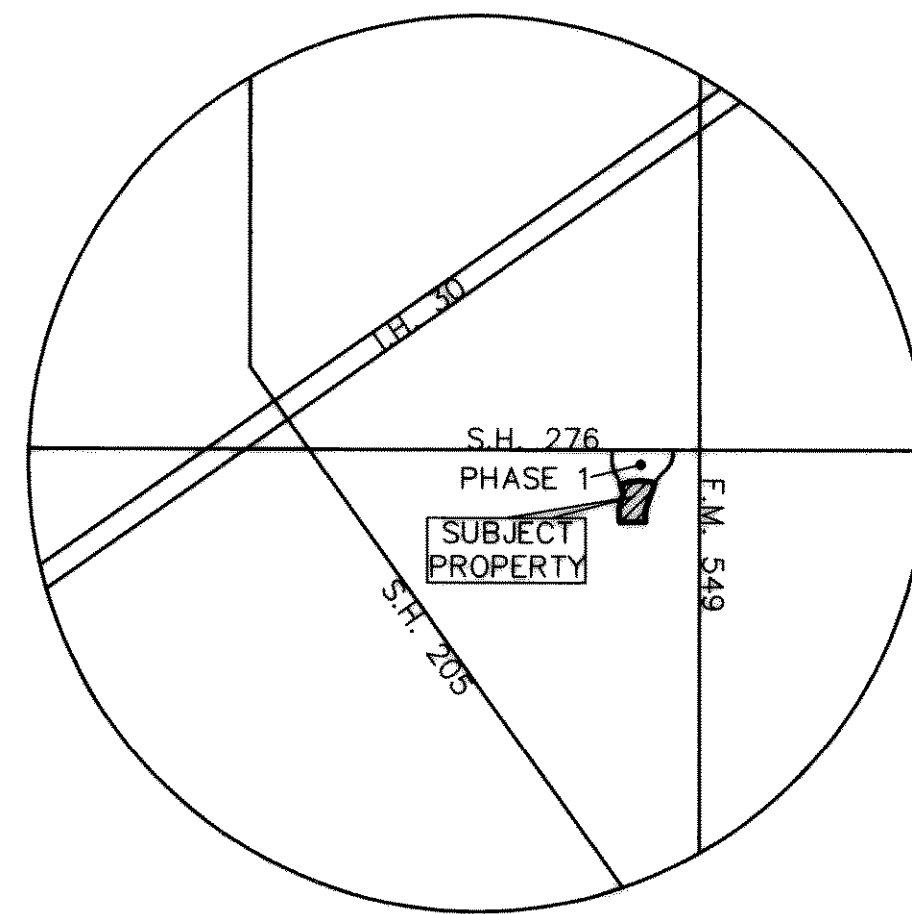


CONSTRUCTION PLANS FOR LOFLAND FARMS

PHASE TWO

LOFLAND FARMS, PHASE 2



LOCATION MAP

ALL CONTRACTORS TO USE STANDARD DETAILS
PER CITY OF ROCKWALL.

SHEET INDEX

- COVER SHEET
- FINAL PLAT
- 1. DRAINAGE AREA MAP, INLET DESIGN CALCULATIONS, & STORM SEWER PIPE CALCULATIONS
- PAVING PLANS & PROFILES
- 2. DANBURY DRIVE
- ALLEY "1" & ALLEY "2"
- 3. TEAGLE DRIVE STA. 16+67.49 TO 21+38.48
- GARRISON DRIVE STA. 21+38.48 TO 22+00
- ALLEY "4" STA. 5+71.68 TO 11+50
- ALLEY "6" STA. 0+00 TO END
- 4. GARRISON DRIVE STA. 22+00 TO END
- ALLEY "3"
- 5. STABLEGLEN DRIVE STA. 11+24.44 TO 17+00
- ALLEY "5"
- 6. STABLEGLEN DRIVE STA. 17+00 TO END
- ALLEY "4" STA. 11+50.00 TO END
- 7. LOCKHART DRIVE
- ALLEY PROFILES
- 8. ALLEY "1" & ALLEY "2"
- 9. ALLEY "3" & ALLEY "5"
- 10. ALLEY "4" & ALLEY "6"
- 11. STORM SEWER PLAN
- STORM SEWER PROFILES
- 12. LINE "1", LINE "2" & LINE "3"
- 13. LINE "4" & LINE "5"
- 14. WATER & SANITARY SEWER PLAN
- SANITARY SEWER PROFILES
- 15. LINE "A", LINE "C" & LINE "D"
- 16. LINE "B"
- 17. LOT GRADING PLAN
- 18. LOT GRADING PLAN
- 19. STORM WATER POLLUTION PREVENTION PLAN
- 20. STORM WATER POLLUTION PREVENTION PLAN—DETAILS

CITY OF ROCKWALL

ROCKWALL COUNTY, TEXAS

FEBRUARY 22, 2001

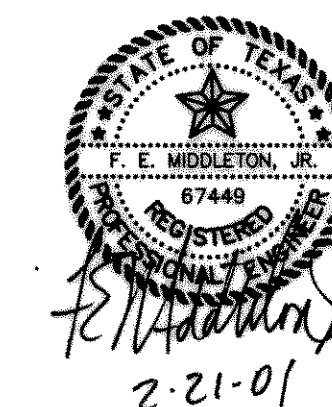
DEVELOPER:

CONTINENTAL HOMES
621 W. COLLEGE STREET
GRAPEVINE, TEXAS 76051

AS BUILT

Winkelmann & Associates, Inc. hereby states that this plan, to the best of our knowledge is "As Built." Modifications from the originally approved construction documents have been made as per information provided by the contractor. Winkelmann & Associates, Inc. does not certify as to the correctness or quality of construction as no field inspection was performed.

F. E. Middleton, Jr. 12-10-01
WINKELMANN & ASSOCIATES, INC. DATE



Winkelmann & Associates, Inc.

CONSULTING CIVIL ENGINEERS ■ SURVEYORS

6750 HILLCREST PLAZA DRIVE, SUITE 100
DALLAS, TEXAS 75230

(972) 490-7090
(972) 490-7099 FAX

32001.01(20)