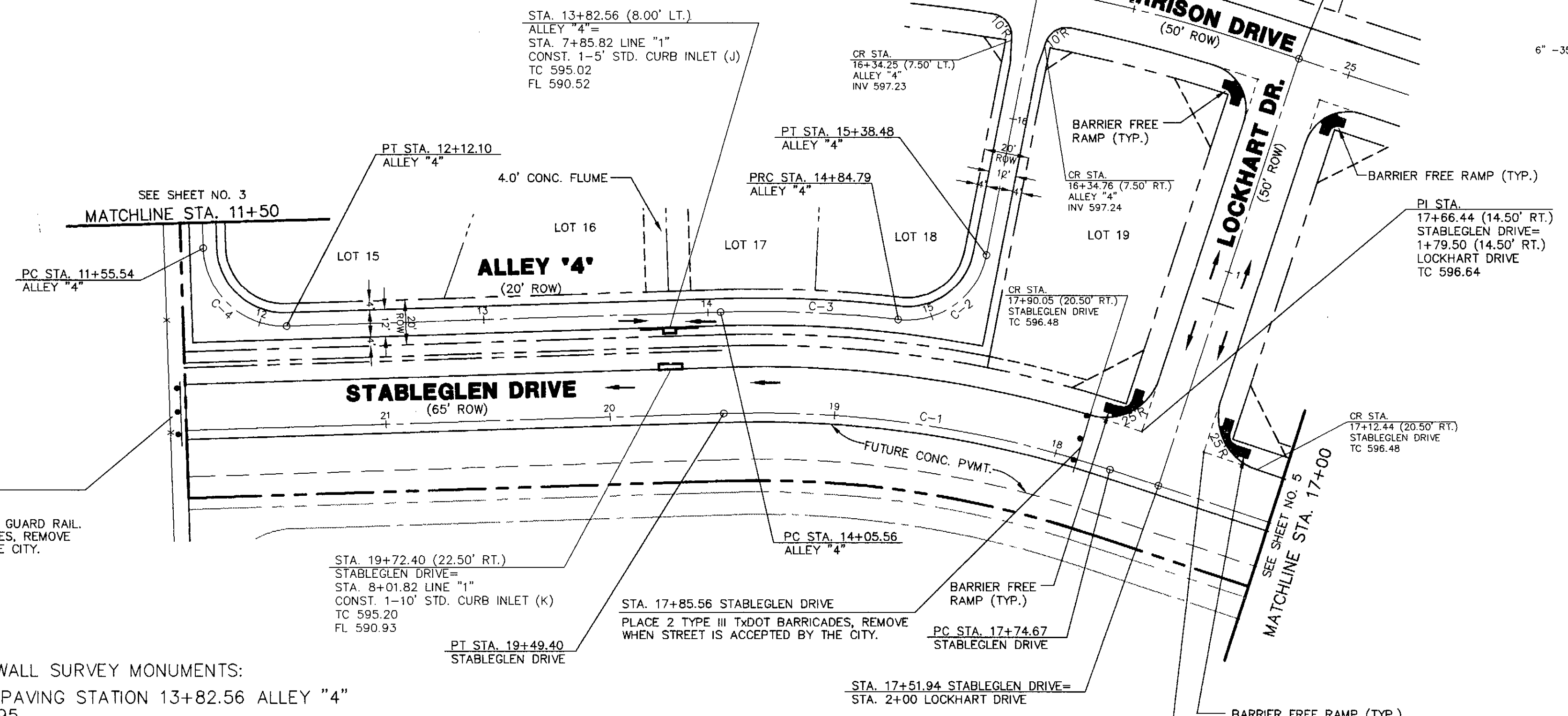
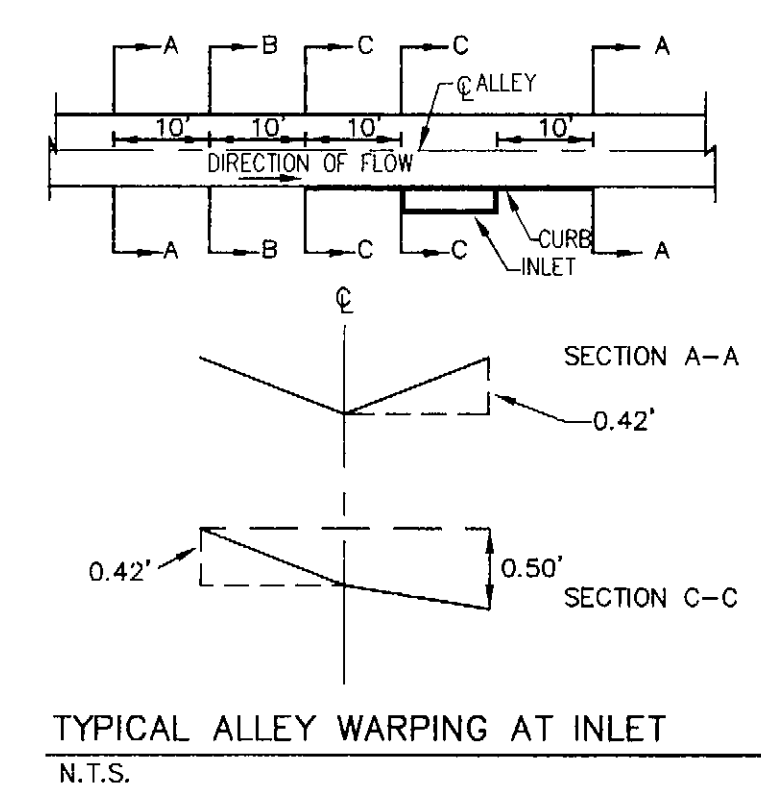
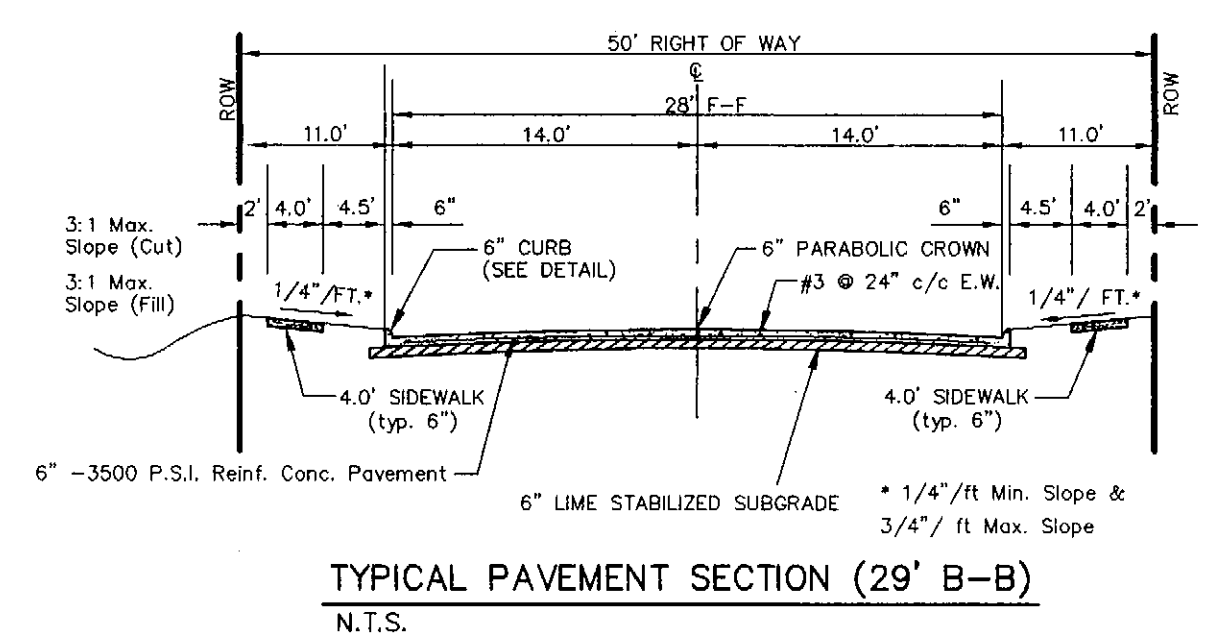
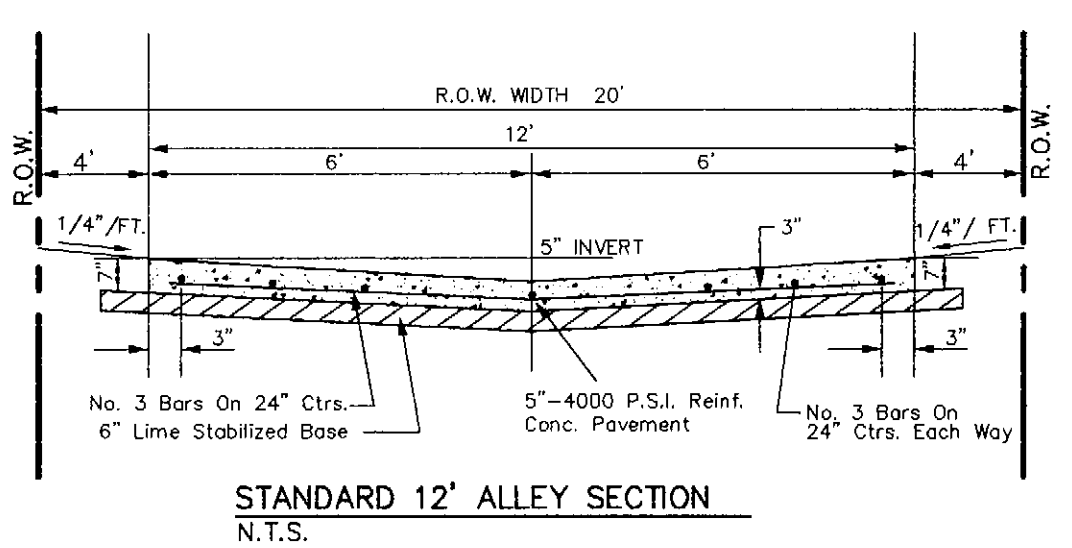
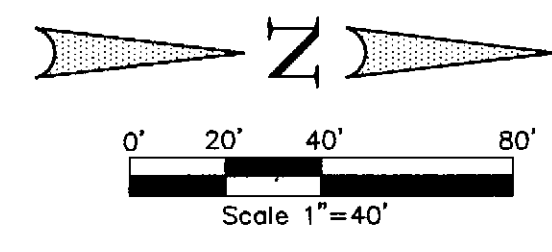


CURVE REPORT						
CURVE	RADIUS	DELTA	TANGENT	LENGTH	CHORD	BEARING
C-1	500.00'	20°01'25"	88.27'	174.73'	173.85'	N 08°12'59" E
C-2	36.00'	85°27'32"	33.25'	53.69'	48.85'	S 36°11'44" E
C-3	545.00'	08°19'45"	39.68'	79.23'	79.16'	N 02°22'09" E
C-4	36.00'	90°00'32"	36.01'	56.55'	50.92'	S 43°12'33" W

LEGEND	
—	TOP OF CURB
—	CURB RETURN
—	FLOW LINE
—	STREET STATION
—	FLOW ARROW

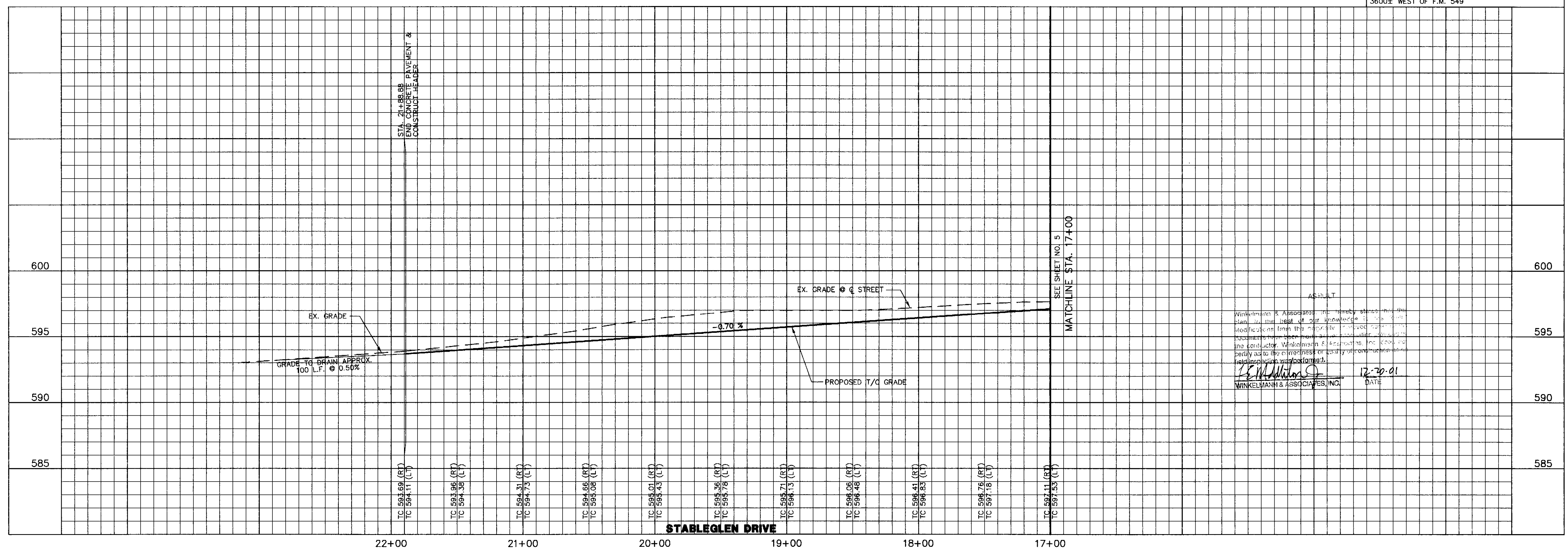


- NOTE:
- PAVEMENT FOR STREETS SHALL CONSIST OF 6" 3500 P.S.I. REINFORCED CONCRETE AND 6" LIME-STABILIZED SUBGRADE WITH 6" PARABOLIC CROWN.
 - PAVEMENT FOR ALLEYS SHALL CONSIST OF MIN. 5" 4000 P.S.I. REINFORCED CONCRETE AND 6" LIME-STABILIZED SUBGRADE WITH 5" INVERT. TYPICAL ALLEY SECTION WILL BE 7'-5"-7'.

CITY OF ROCKWALL SURVEY MONUMENTS:
 INLET TOP AT PAVING STATION 13+82.56 ALLEY "4"
 N=7017309.8395
 E=2605322.9637
 ELEV.=591.31

BENCHMARK: ELEV. = 600.69
 CITY OF ROCKWALL R-19
 BRASS MONUMENT AT THE N/W CORNER OF
 SILVERVIEW & DIAMOND WAY. 500' ± SOUTH OF
 S.H. 276.

BENCHMARK: ELEV. = 583.56
 R.R. SPIKE SET IN THE CENTERLINE OF S.H. 276
 3600± WEST OF F.M. 549



THESE CONSTRUCTION PLANS WERE PREPARED UNDER THE RESPONSIBLE SUPERVISION OF F.E. MIDDLETON, JR., REGISTERED PROFESSIONAL ENGINEER NO. 67449.

THE SEAL APPEARING ON THIS DOCUMENT WAS AUTHORIZED BY F.E. MIDDLETON, JR., P.E. #67449

PAVING PLAN & PROFILE
STABLEGLEN DRIVE STA. 17+00 TO END
PAVING PLAN
ALLEY '4' STA. 11+50.00 TO END
LOFLAND FARMS, PHASE 2

Scale: 1"=40'
 Date: 02/14/01
 Designed By: RB
 Drawn By: DA
 Checked By: FEM
 File: 3200PI14.DWG View:
 Project No.: 3200.01

SHEET
6
OF
20

APPROV. _____
 REVISION _____
 DATE _____
 NO. _____

Winkelmann & Associates, Inc.
 CONSULTING CIVIL ENGINEERS & SURVEYORS
 6750 Hillcrest Plaza Drive, Suite 150
 Rockwall, Texas 75087
 (972) 966-7999
 www.winkelmann.com

W.H. BAIRD SURVEY, ABSTRACT NO. 25
 CITY OF ROCKWALL
 ROCKWALL COUNTY, TEXAS
 CONTINENTAL HOMES
 621 WEST COLLEGE STREET
 GRAPEVINE, TEXAS 76051