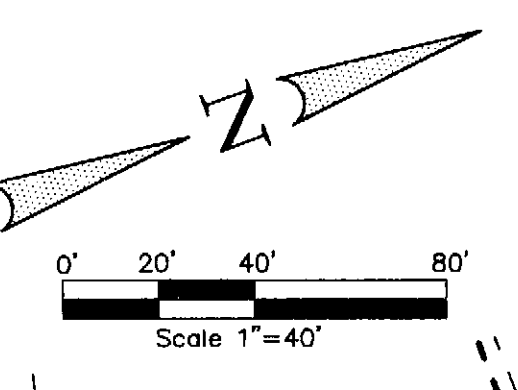


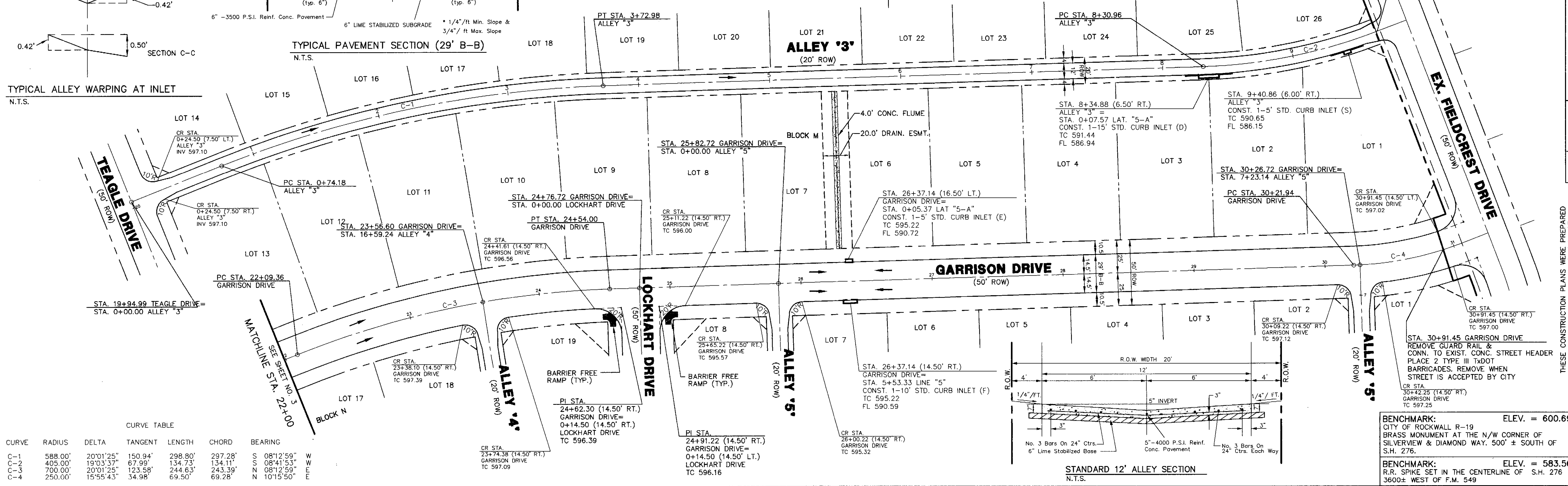
CITY OF ROCKWALL SURVEY MONUMENTS:
 INLET TOP AT PAVING STATION 8+34.88 ALLEY "3"
 N=7018039.5917
 E=2605174.5914
 ELEV.=591.93

LEGEND
 TC TOP OF CURB
 CR CURB RETURN
 FL FLOW LINE
 STREET STATION
 FLOW ARROW

NOTE:
 1) PAVEMENT FOR STREETS SHALL CONSIST OF 6" 3500 P.S.I. REINFORCED CONCRETE AND 6" LIME-STABILIZED SUBGRADE WITH 6" PARABOLIC CROWN.
 2) PAVEMENT FOR ALLEYS SHALL CONSIST OF MIN. 5" 4000 P.S.I. REINFORCED CONCRETE AND 6" LIME-STABILIZED SUBGRADE WITH 5" INVERT. TYPICAL ALLEY SECTION WILL BE 7'-5"-7'.



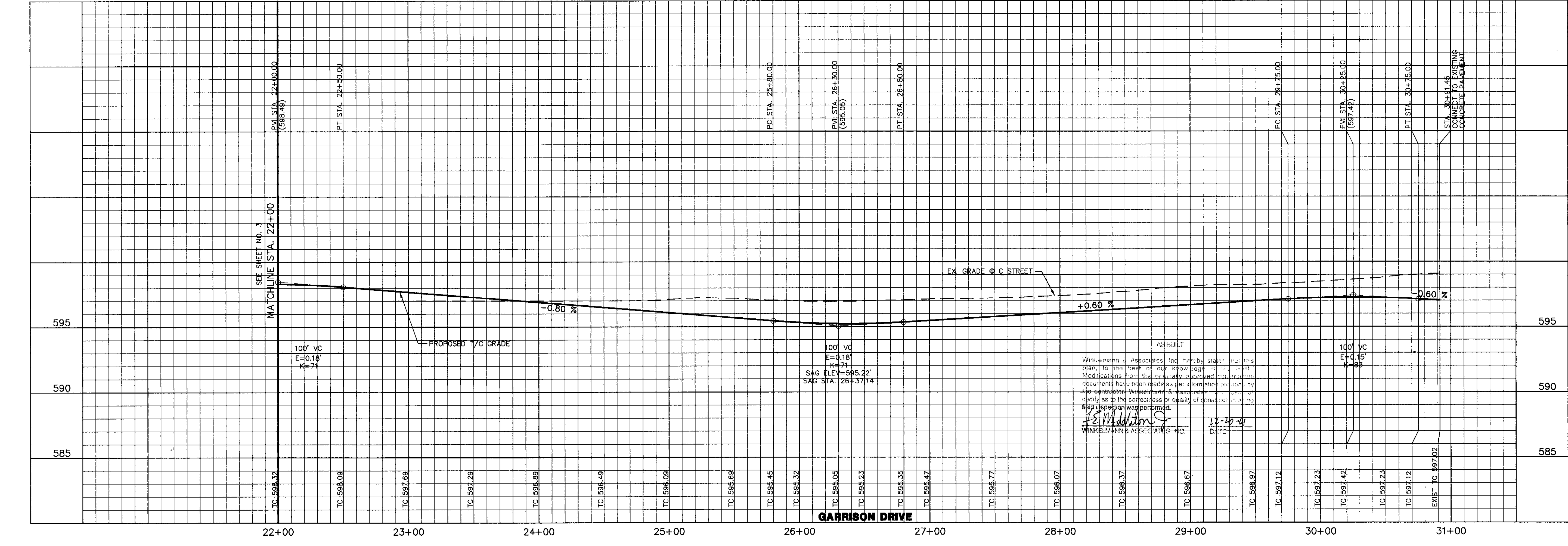
STA. 9+66.19 ALLEY "3"
 REMOVE GUARD RAIL & CONN. TO EXIST. CONC. STREET HEADER
 PLACE 2 TYPE III 1x10" BARRICADES. REMOVE WHEN STREET IS ACCEPTED BY CITY



CURVE TABLE

CURVE	RADIUS	DELTA	TANGENT	LENGTH	CHORD	BEARING
C-1	588.00'	20°01'25"	150.94'	298.80'	297.28'	S 08°12'59" W
C-2	405.00'	19°03'37"	67.99'	134.73'	134.11'	S 08°41'53" W
C-3	700.00'	20°01'25"	123.58'	244.63'	243.39'	S 08°12'59" W
C-4	250.00'	15°55'43"	34.98'	69.50'	69.28'	N 10°15'50" E

BENCHMARK: ELEV. = 600.69
 CITY OF ROCKWALL R-19
 BRASS MONUMENT AT THE N/W CORNER OF SILVERVIEW & DIAMOND WAY, 500' ± SOUTH OF S.H. 276.
 BENCHMARK: ELEV. = 583.56
 R.R. SPIKE SET IN THE CENTERLINE OF S.H. 276 3600± WEST OF F.M. 549



Winkelman & Associates, Inc. hereby states that this plan, to the best of our knowledge and belief, is a true and correct representation of the actual conditions and that the same have been prepared as per information provided by the contractor. Winkelman & Associates, Inc. does not warrant or assume any liability for the correctness or quality of construction or the time of completion of the same.

F.E. Middleton
 F.E. MIDDLETON, JR., P.E.
 WINKELMAN & ASSOCIATES, INC.

THESE CONSTRUCTION PLANS WERE PREPARED UNDER THE RESPONSIBLE SUPERVISION OF F.E. MIDDLETON, JR., REGISTERED PROFESSIONAL ENGINEER NO. 67448

THE SEAL APPEARING ON THIS DOCUMENT WAS AUTHORIZED BY F.E. MIDDLETON, JR., P.E. #67448

Winkelman & Associates, Inc.
 CONSULTING CIVIL ENGINEERS ■ SURVEYORS
 6750 Hillcrest Plaza Drive, Suite 100
 Dallas, Texas 75230
 (972) 482-7900
 Fax: (972) 482-7999
 www.winkelman.com

W.H. BAIRD SURVEY, ABSTRACT NO. 25
 CITY OF ROCKWALL
 ROCKWALL COUNTY, TEXAS
 CONTINENTAL HOMES
 621 WEST COLLEGE STREET
 GRAPEVINE, TEXAS 76051

PAVING PLAN & PROFILE
GARRISON DRIVE STA. 22+00 TO END
PAVING PLAN
ALLEY '3'
LOFLAND FARMS, PHASE 2

Scale: 1" = 40'
 Date: 02/14/01
 Designed By: RB
 Drawn By: DA
 Checked By: FEM
 File: 3200IP2.DWG
 View:
 Project No.: 32001.01

SHEET
4
OF
20