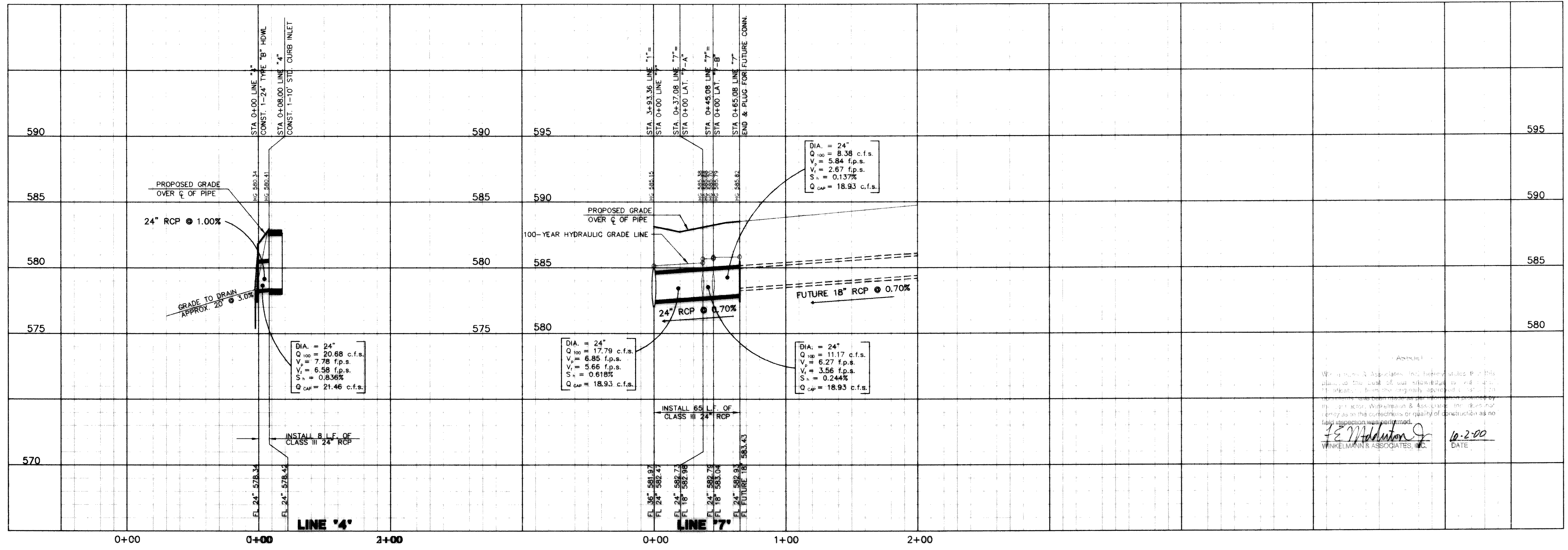
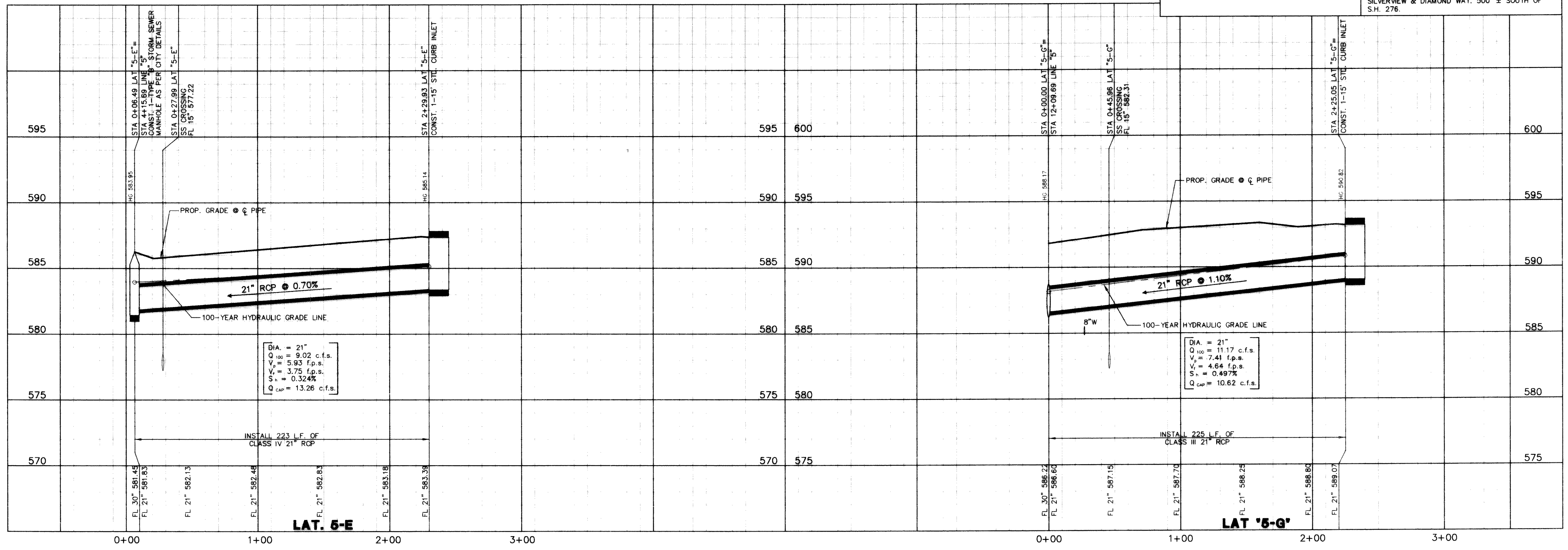


BENCHMARK: R.R. SPIKE SET IN THE CENTERLINE OF S.H. 276 3600± WEST OF F.M. 549 ELEV. = 583.56
 BENCHMARK: CITY OF ROCKWALL R-19 BRASS MONUMENT AT THE N/W CORNER OF SILVERVIEW & DIAMOND WAY, 500' ± SOUTH OF S.H. 276. ELEV. = 600.69



APPROV. _____
 REVISION _____
 NO. _____ DATE _____

W.H. BAIRD SURVEY, ABSTRACT NO. 25
 CITY OF ROCKWALL
 ROCKWALL COUNTY, TEXAS
 CONTINENTAL HOMES
 621 WEST COLLEGE STREET
 GRAPEVINE, TEXAS 76051

STORM SEWER PROFILES
LAT. '5-E', LAT. '5-G', LINE '4' & LINE '7'

Scale: 1" = 40' Date: 3/10/00
 Designed By: DA
 Drawn By: DA
 Checked By: FEM
 File: 3200SP3.DWG View:
 Project No.: 3200101