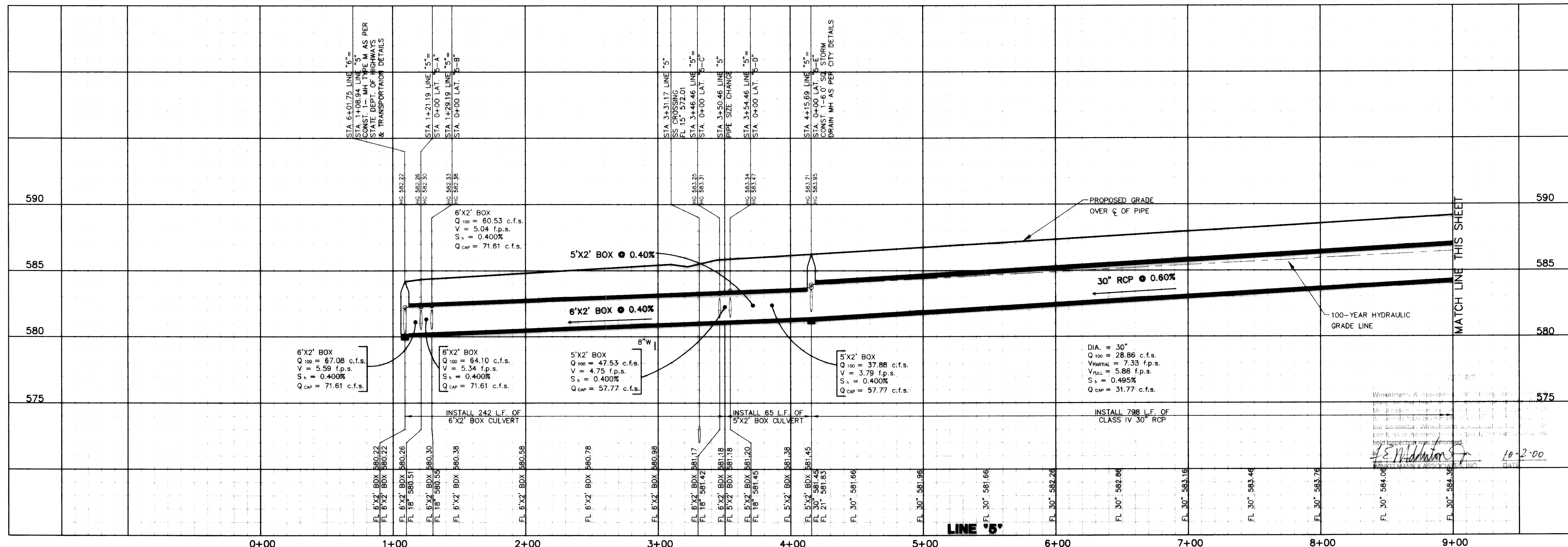
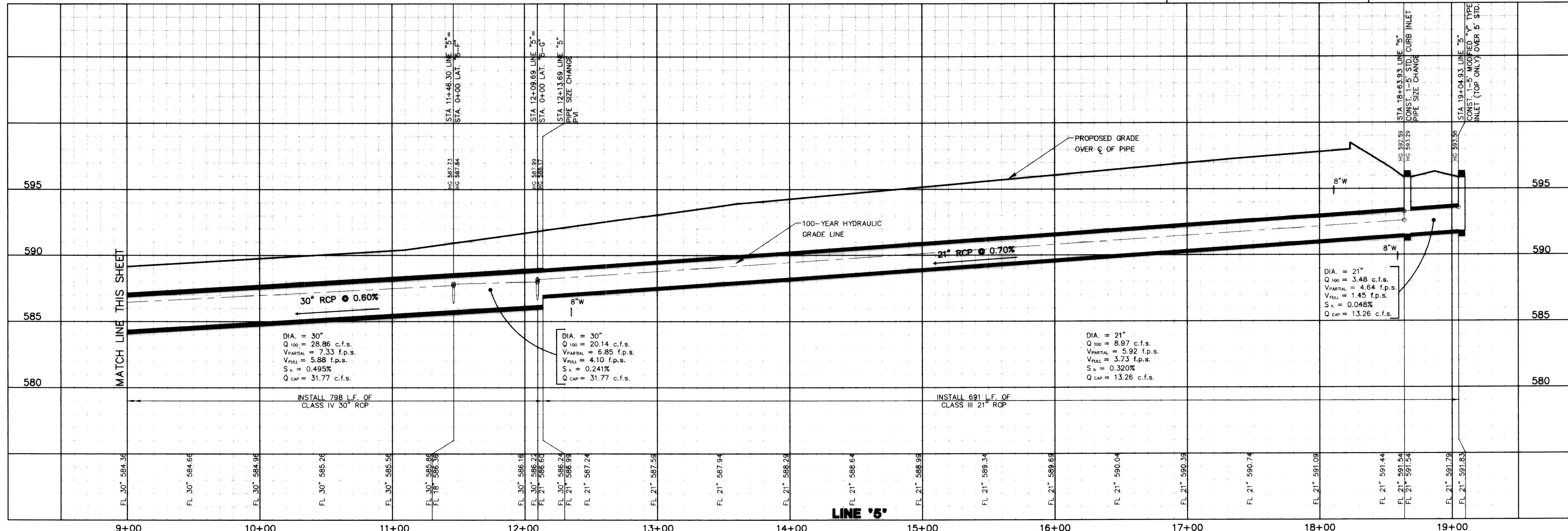
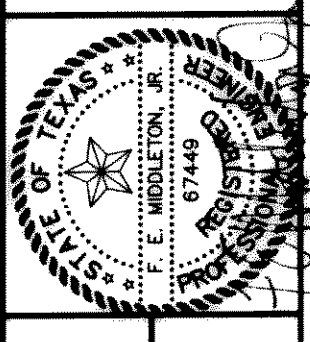


BENCHMARK: ELEV. = 583.56  
 R.R. SPIKE SET IN THE CENTERLINE OF S.H. 276  
 3600± WEST OF F.M. 549

BENCHMARK: ELEV. = 600.89  
 CITY OF ROCKWALL R-19  
 BRASS MONUMENT AT THE N/W CORNER OF  
 SILVERVIEW & DIAMOND WAY, 500' ± SOUTH OF  
 S.H. 276.



NO.	DATE	REVISION	APPROV.



W.H. BAIRD SURVEY, ABSTRACT NO. 25  
 CITY OF ROCKWALL  
 ROCKWALL COUNTY, TEXAS  
 CONTINENTAL HOMES  
 621 WEST COLLEGE STREET  
 GRAPEVINE, TEXAS 76051

**STORM SEWER PROFILE**  
**LINE '5'**

Scale: 1" = 40'  
 Date: 1/23/00  
 Designed By: NK  
 Drawn By: DA  
 Checked By: FEM  
 File: 3200ISP2.DWG View:  
 Project No.: 3200101