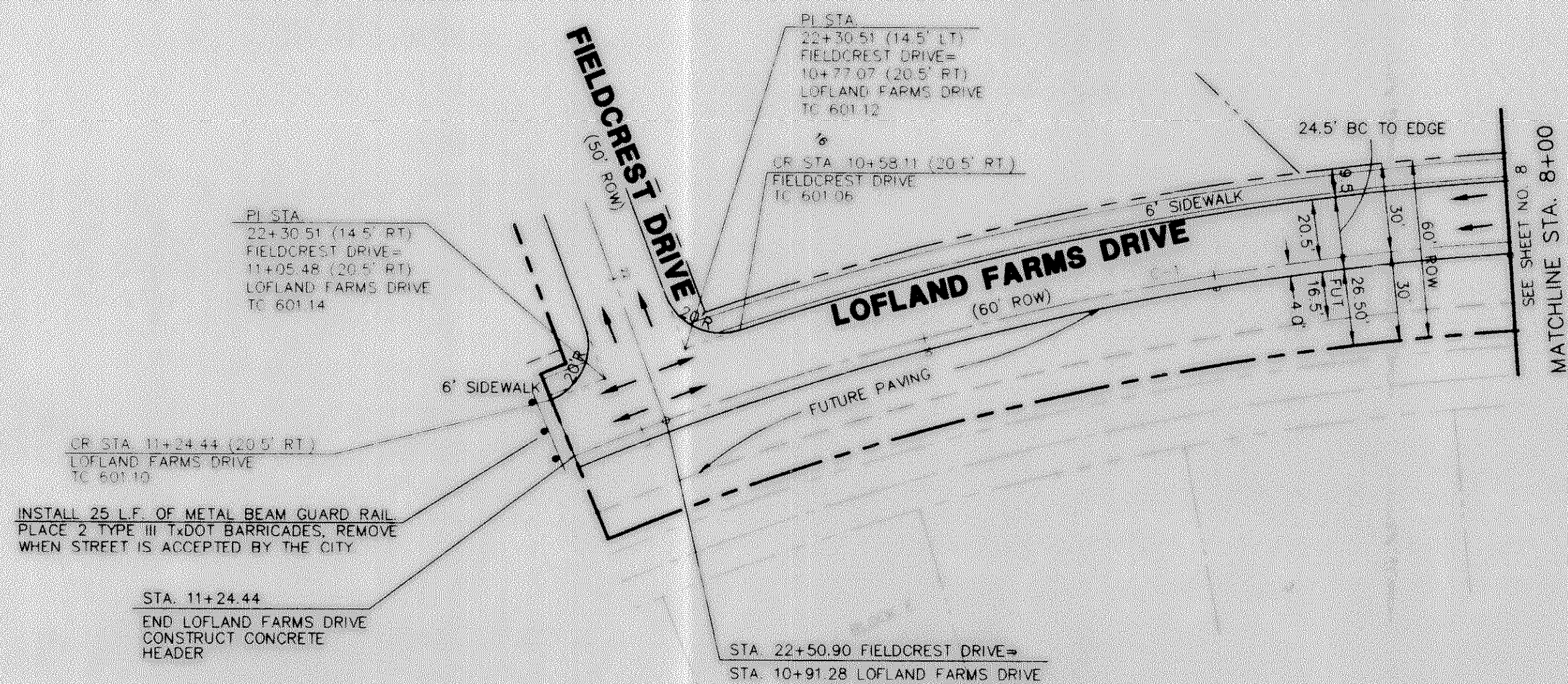


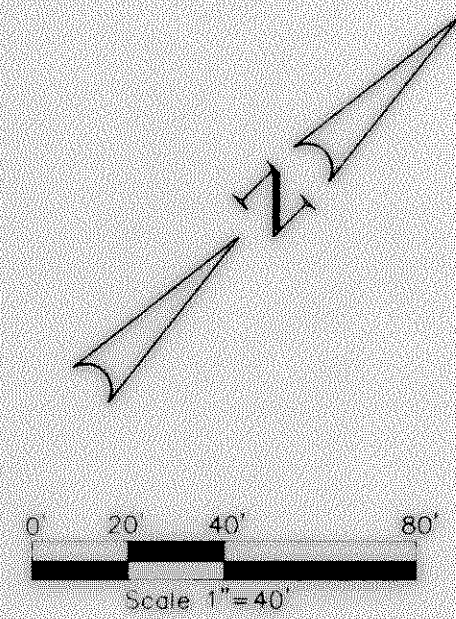
- NOTE:
- 1) PAVEMENT FOR STREETS SHALL CONSIST OF 6" 3500 P.S.I. REINFORCED CONCRETE AND 6" LIME-STABILIZED SUBGRADE WITH 6" PARABOLIC CROWN.
 - 2) PAVEMENT FOR ALLEYS SHALL CONSIST OF 4000 P.S.I. REINFORCED CONCRETE AND 6" LIME-STABILIZED SUBGRADE WITH 5" INVERT. TYPICAL ALLEY SECTION WILL BE 7'-5" - 7'.
 - 3) CONTRACTOR TO RUN LIME SERIES BEFORE CONSTRUCTION.

CURVE	RADIUS	DELTA	TANGENT	LENGTH	CHORD	BEARING
C-1	1000.00'	22°18'29"	197.17'	589.35'	386.89'	S 37°42'50" W



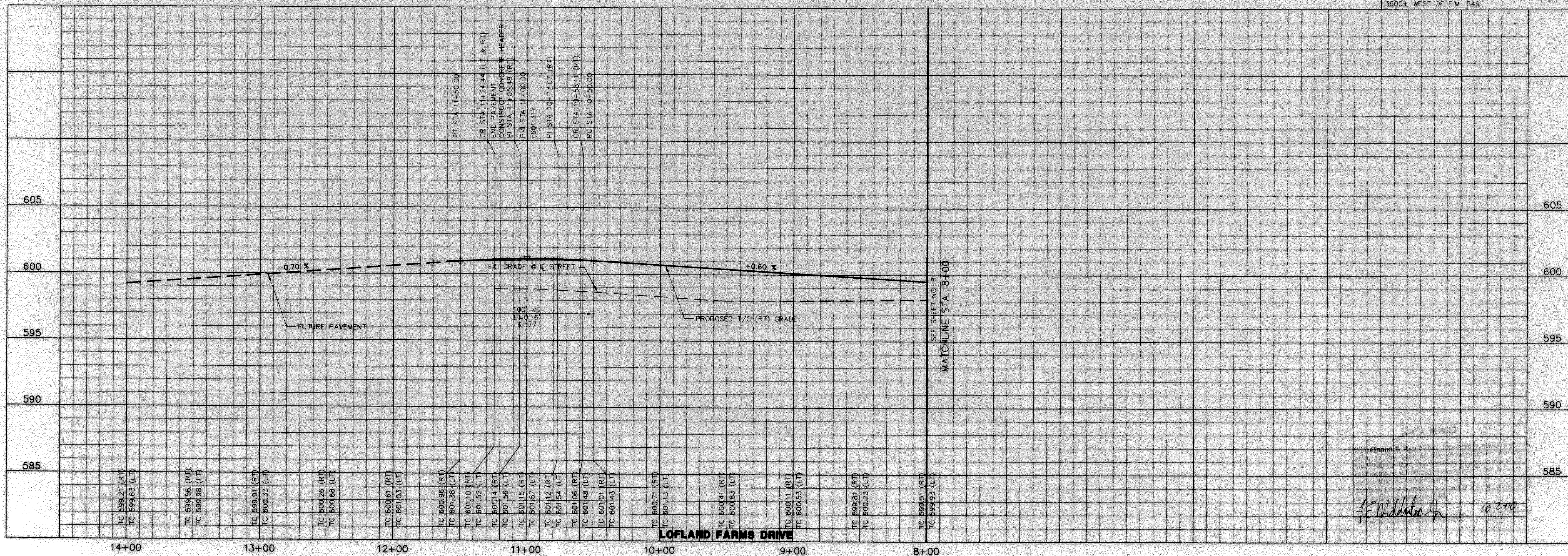
LEGEND

TC	TOP OF CURB
CR	CURB RETURN
FL	FLOW LINE
+	STREET STATION
→	FLOW ARROW



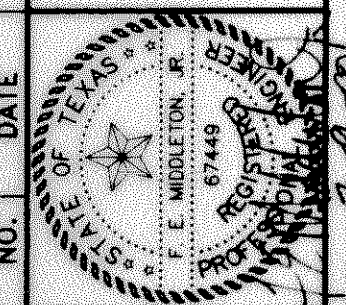
BENCHMARK: ELEV. = 600.69
 CITY OF ROCKWALL R-19
 BRASS MONUMENT AT THE N/W CORNER OF
 SILVERVIEW & DIAMOND WAY 500' ± SOUTH OF
 S.H. 276.

BENCHMARK: ELEV. = 583.56
 R.R. SPIKE SET IN THE CENTERLINE OF S.H. 276
 3600' ± WEST OF F.M. 549



NO.	DATE	REVISION	APPROV.

Winkelmann & Associates, Inc.
 CONSULTING CIVIL ENGINEERS ■ SURVEYORS
 6750 Mitchell Road, Suite 100
 Rockwall, Texas 75087
 (972) 966-7900
 (972) 966-7901
 www.winkelmann.com



W.H. BAIRD SURVEY, ABSTRACT NO. 25
 CITY OF ROCKWALL
 ROCKWALL COUNTY, TEXAS
 CONTINENTAL HOMES
 621 WEST COLLEGE STREET
 GRAPEVINE, TEXAS 76051

**PAVING PLAN & PROFILE
 LOFLAND FARMS DRIVE
 STA. 8+00 TO 11+24.44**

Scale: 1" = 40'
 Date: 2/9/00
 Designed By: MK
 Drawn By: DA
 Checked By: FEM
 File: 3200P7.DWG View:
 Project No.: 32001.01

SHEET
9
 OF
32

F. E. Middleton
 10-200