

- NOTE:
- 1) PAVEMENT FOR STREETS SHALL CONSIST OF 6" 3500 P.S.I. REINFORCED CONCRETE AND 6" LIME-STABILIZED SUBGRADE WITH 6" PARABOLIC CROWN.
 - 2) PAVEMENT FOR ALLEYS SHALL CONSIST OF 4000 P.S.I. REINFORCED CONCRETE AND 6" LIME-STABILIZED SUBGRADE WITH 5" INVERT. TYPICAL ALLEY SECTION WILL BE 7'-5"-7'.
 - 3) CONTRACTOR TO RUN LIME SERIES BEFORE CONSTRUCTION.

LEGEND

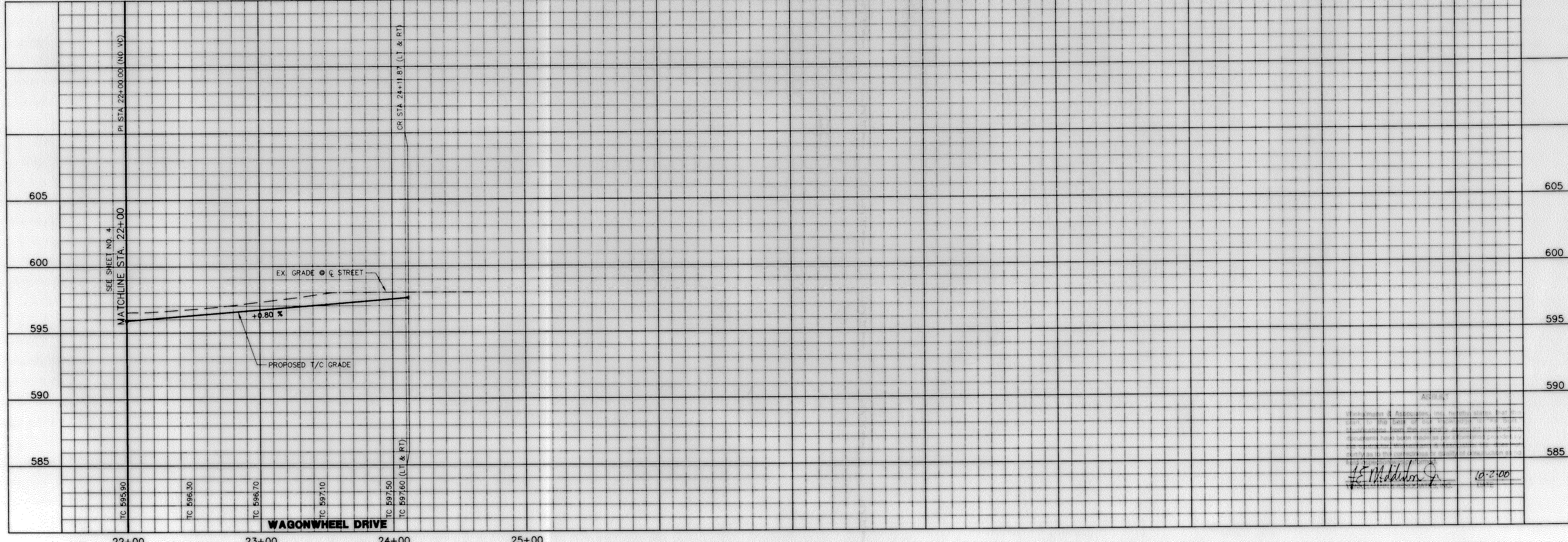
TC	TOP OF CURB
CR	CURB RETURN
FL	FLOW LINE
+	STREET STATION
→	FLOW ARROW

CURVE TABLE

CURVE	RADIUS	DELTA	TANGENT	LENGTH	CHORD	BEARING
C-1	56.00'	90°30'00"	38.00'	56.55'	50.91'	N 43°54'21" E
C-2	400.00'	45°32'44"	211.61'	400.37'	389.76'	S 21°55'43" W

BENCHMARK: ELEV. = 600.69
 CITY OF ROCKWALL R-19
 BRASS MONUMENT AT THE N/W CORNER OF
 SILVERVIEW & DIAMOND WAY. 500' ± SOUTH OF
 S.H. 276.

BENCHMARK: ELEV. = 583.56
 R.R. SPIKE SET IN THE CENTERLINE OF
 S.H. 276
 3600± WEST OF F.M. 549



Winkelmann & Associates, Inc.
 CONSULTING CIVIL ENGINEERS & SURVEYORS
 6200 Highway 190, Suite 100, Rockwall, TX 75087
 (972) 972-2000 FAX
 www.winkelmann.com

W.H. BAIRD SURVEY, ABSTRACT NO. 25
 CITY OF ROCKWALL
 ROCKWALL COUNTY, TEXAS
 CONTINENTAL HOMES
 621 WEST COLLEGE STREET
 GRAPEVINE, TEXAS 76051

PAVING PLAN & PROFILE WAGONWHEEL DRIVE
 STA. 22+00 TO 24+61.28
 PAVING PLAN ALLEY 3 STA. 0+50 TO 5+50
 PAVING PLAN ALLEY 4 STA. 10+50 TO 11+30.16

Scale: 1"=40' Date: 2/9/00
 Designed By: MK
 Drawn By: DA
 Checked By: FEM
 File: 3200P4.DWG View:
 Project No.: 3200(01)

SHEET
 5
 OF
 32