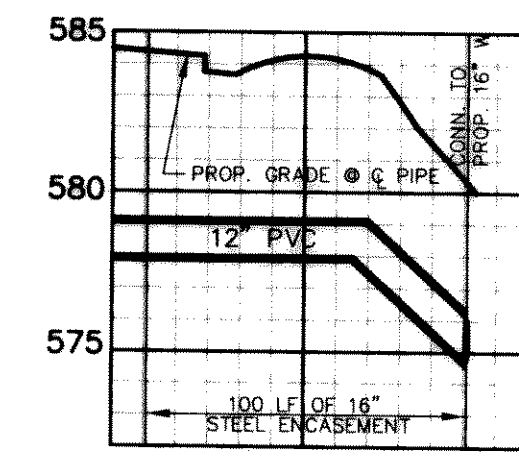
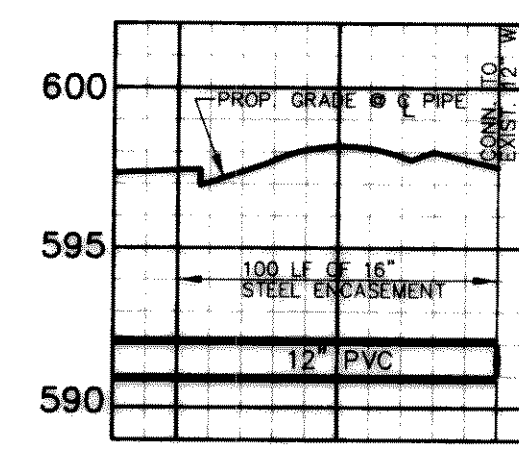


FOR PROFILE SEE DETAIL "A"

FOR PROFILE SEE DETAIL "B"



**DETAIL 'A'**  
SCALE: H: 1"=60'  
V: 1"=6'



**DETAIL 'B'**  
SCALE: H: 1"=60'  
V: 1"=6'

CURVE TABLE

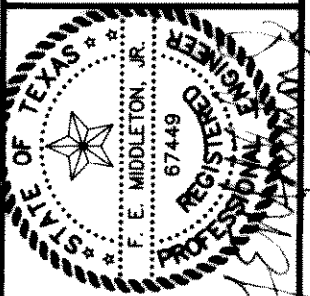
CURVE	RADIUS	DELTA	TANGENT	LENGTH	CHORD	BEARING	P.C. STATION	P.T. STATION
C-1	228.50'	22°48'43"	46.10'	90.97'	90.38'	N 77°34'59" E	11+32.69	12+23.67
C-2	228.50'	25°28'16"	51.64'	101.58'	100.75'	S 78°16'31" E	16+46.23	17+47.81
C-3	538.50'	22°48'43"	108.64'	214.40'	212.99'	N 77°34'59" E	1+74.66	3+89.06
C-4	378.50'	22°48'43"	76.36'	150.70'	149.70'	N 12°25'01" W	3+11.79	4+62.49
C-5	527.50'	10°45'43"	49.69'	99.08'	98.94'	S 04°22'13" W	15+77.70	16+76.78
C-6	271.50'	03°20'06"	7.90'	15.80'	15.80'	S 00°11'05" W	0+00.00	0+15.80

- NOTE:
1. WATER LINE LOCATED 5' BACK OF CURB.
  2. SANITARY SEWER LOCATED 7' BACK OF CURB.
  3. ALL SEWER SERVICES ARE 4".
  4. ALL WATER SERVICES ARE 1" POLYETHYLENE.
  5. ALL WATER MAINS TO BE CLASS 200 PVC (DR14).
  6. 16" WATER LINE TO BE CLASS 230 PVC (C-905).

**BENCHMARK:** ELEV. = 600.69  
CITY OF ROCKWALL R-19  
BRASS MONUMENT AT THE N/W CORNER OF  
SILVERVIEW & DIAMOND WAY, 500' S SOUTH OF  
S.H. 276.

**BENCHMARK:** ELEV. = 583.56  
R.R. SPIKE SET IN THE CENTERLINE OF  
3600+ WEST OF F.M. 549

**Winkelmann & Associates, Inc.**  
CONSULTING CIVIL ENGINEERS & SURVEYORS  
1750 Wilshire Plaza Drive, Suite 100  
Dallas, Texas 75205  
(972) 492-7899 FAX  
02/20/2000

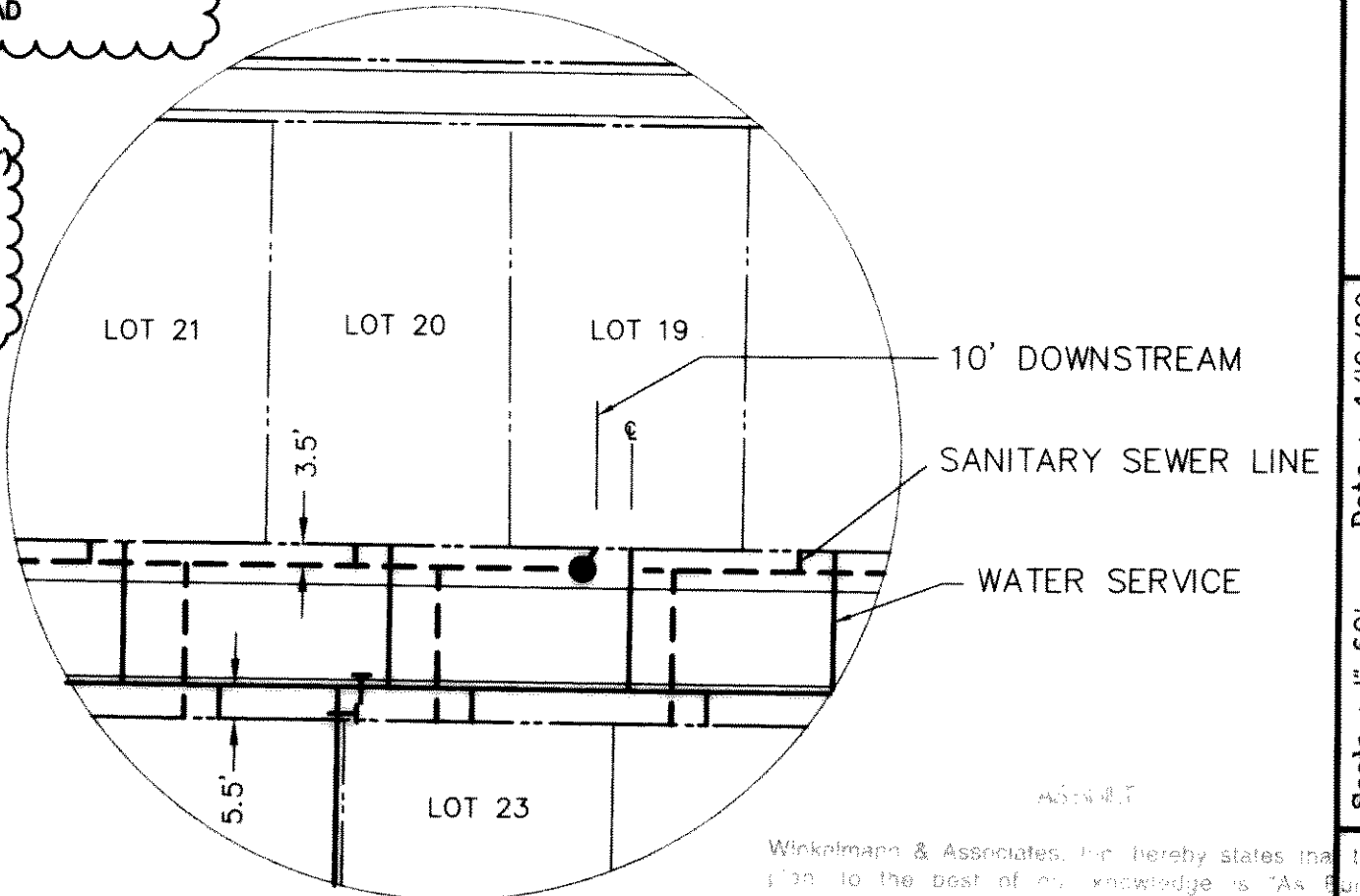


W.H. BAIRD SURVEY, ABSTRACT NO. 25  
CITY OF ROCKWALL  
ROCKWALL COUNTY, TEXAS  
CONTINENTAL HOMES  
621 WEST COLLEGE STREET  
GRAPEVINE, TEXAS 76051

**WATER & SANITARY SEWER PLAN**

Scale: 1"=60' Date: 4/10/00  
Designed By: DA  
Drawn By: DA  
Checked By: FEM  
File: 3200NSLDWG View: 1  
Project No.: 3200(01)

**SHEET 19 OF 32**



**LOT SERVICES DETAIL**  
N.T.S.

Winkelmann & Associates, Inc. hereby states that this plan is the best of its knowledge as a result of observations from its regular approved construction documents have been made as an approved provider by the contractor. Winkelmann & Associates, Inc. does not certify as to the accuracy or quality of construction as no field inspection was performed.

*L. Winkelman*  
WINKELMANN & ASSOCIATES, INC. 10-200  
DATE