

**BENCHMARK:** ELEV. = 600.69  
CITY OF ROCKWALL R-19  
BRASS MONUMENT AT THE N/W CORNER OF  
SILVERVIEW & DIAMOND WAY, 500' ± SOUTH OF  
S.H. 276.

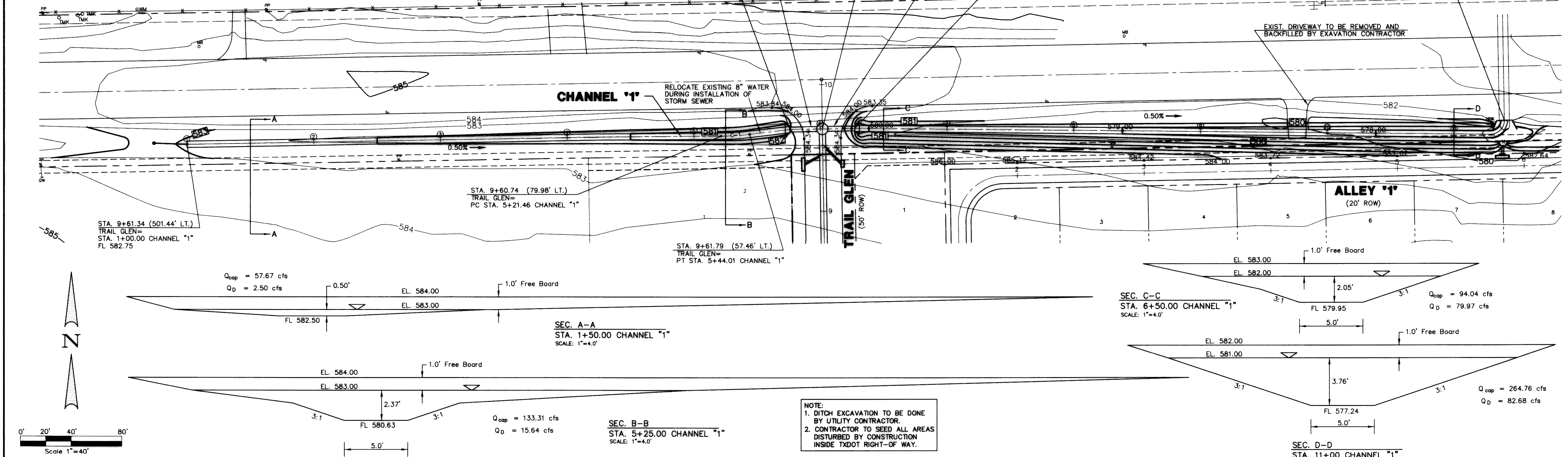
**BENCHMARK:** ELEV. = 583.56  
R.R. SPIKE SET IN THE CENTERLINE OF S.H. 276  
3600± WEST OF F.M. 549

**CURVE REPORT**

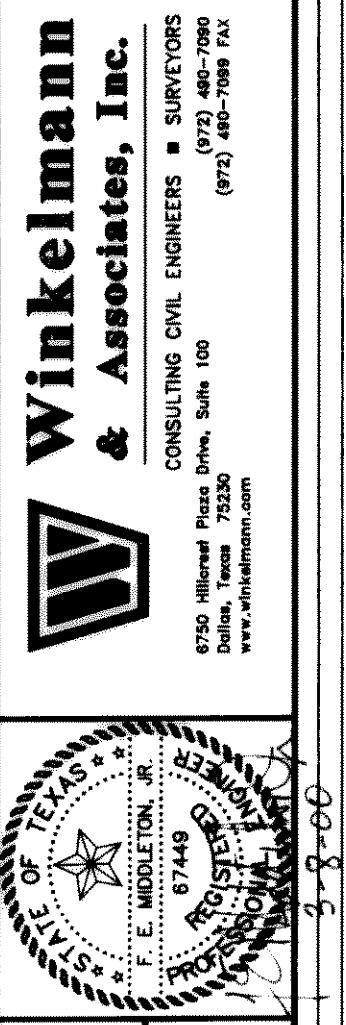
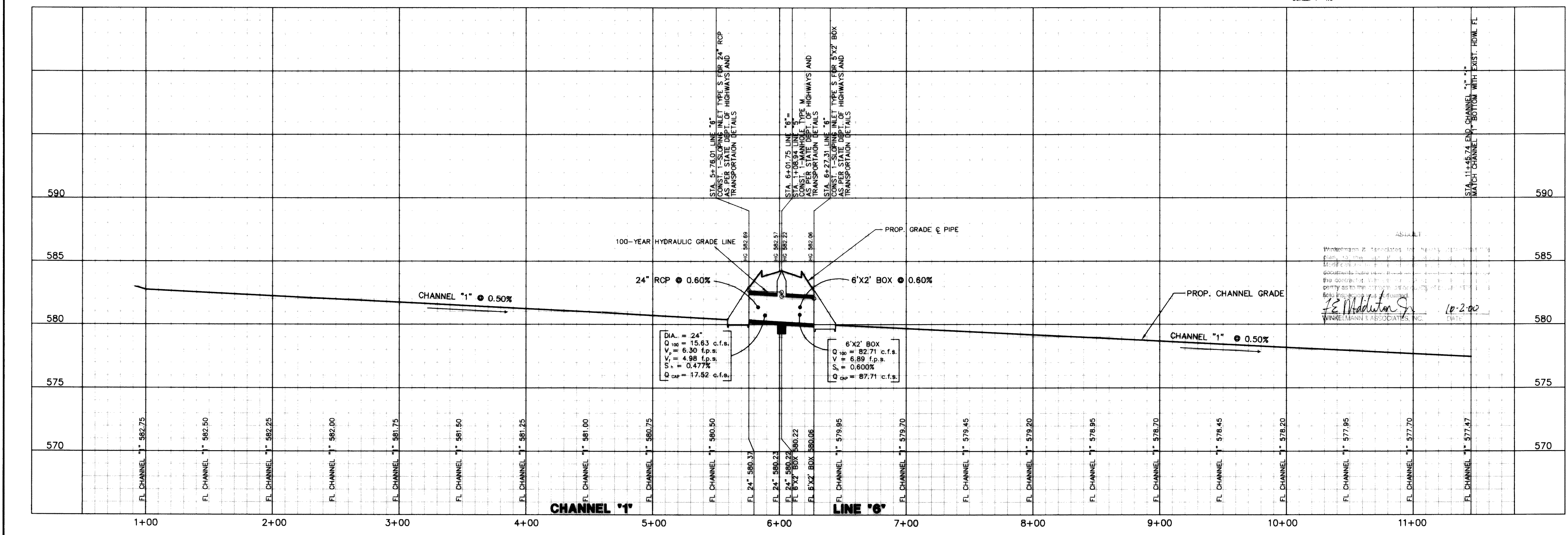
CURVE	RADIUS	DELTA	TANGENT	CHORD	BEARING	
C-1	200.00'	06°27'43"	11.29'	22.56'	22.54'	N 86°19'00" E

**LEGEND**

HDWL	Headwall	Street Station
FL	Flow Line	Storm Station
TC	Top of Curb	Prop. Contour
P.T.	Point of Tangent	Exist. Contour
P.C.	Point of Curve	



**NOTE:**  
1. DITCH EXCAVATION TO BE DONE BY UTILITY CONTRACTOR.  
2. CONTRACTOR TO SEED ALL AREAS DISTURBED BY CONSTRUCTION INSIDE TXDOT RIGHT-OF-WAY.



W.H. BAIRD SURVEY, ABSTRACT NO. 25  
CITY OF ROCKWALL  
ROCKWALL COUNTY, TEXAS  
CONTINENTAL HOMES  
621 WEST COLLEGE STREET  
GRAPEVINE, TEXAS 76051

**CHANNEL '1' GRADING PLAN & PROFILE**

Scale: 1"=40'  
Date: 11-3-00  
Designed By: NK  
Drawn By: NK  
Checked By: FEM  
File: 32001CGP.DWG View:  
Project No.: 32001.01