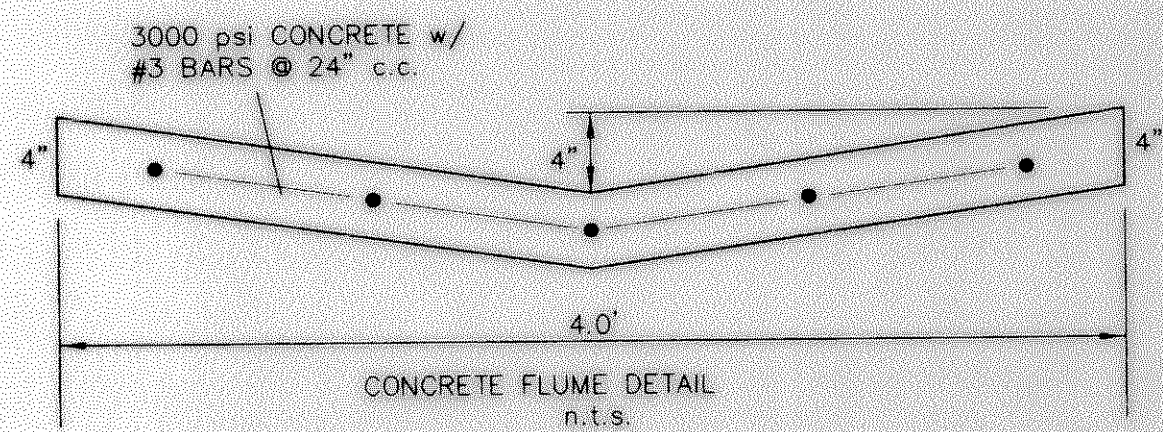
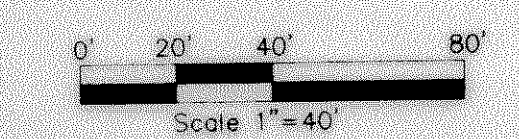
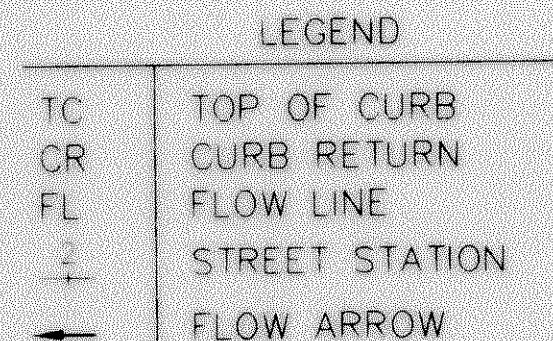
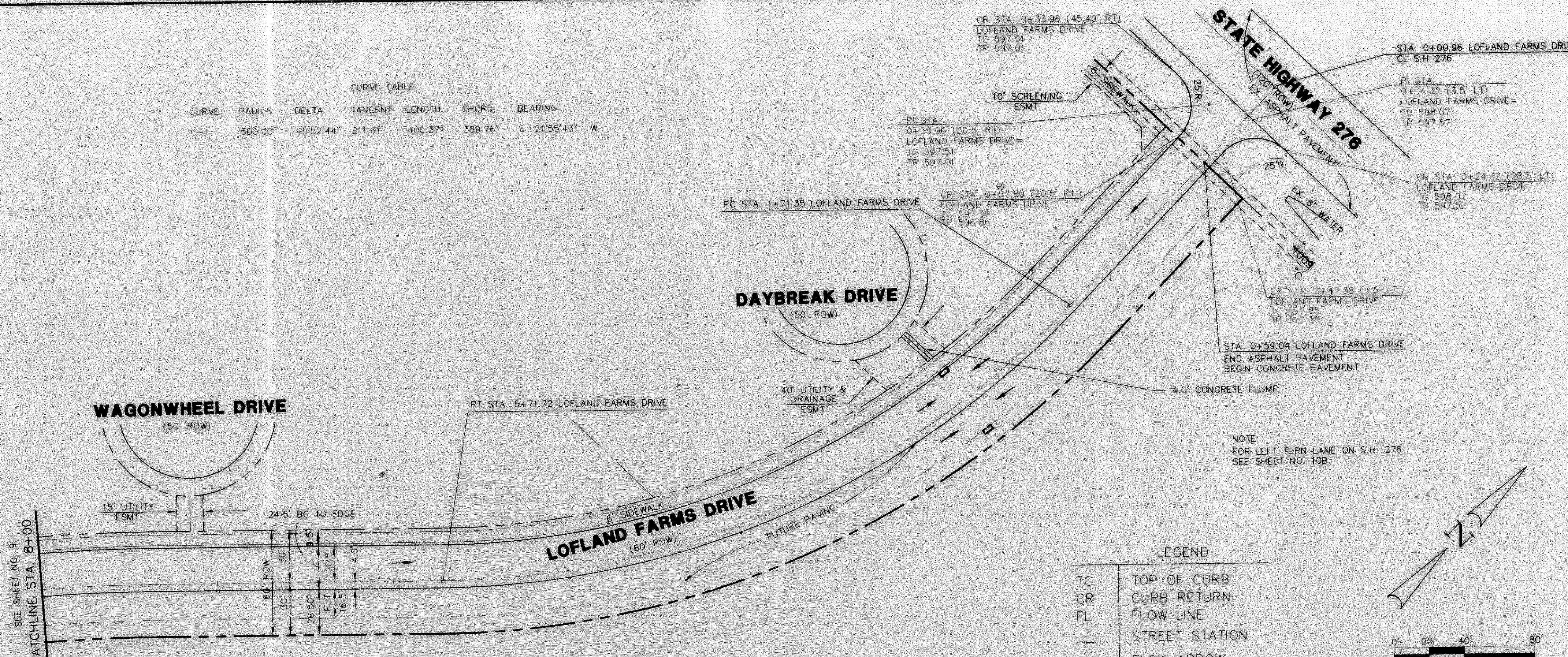


ASPHALT PAVEMENT SECTION

- NOTE:
- 1) PAVEMENT FOR STREETS SHALL CONSIST OF 6" 3500 P.S.I. REINFORCED CONCRETE AND 6" LIME-STABILIZED SUBGRADE WITH 6" PARABOLIC CROWN.
 - 2) PAVEMENT FOR ALLEYS SHALL CONSIST OF 4000 P.S.I. REINFORCED CONCRETE AND 6" LIME-STABILIZED SUBGRADE WITH 5" INVERT. TYPICAL ALLEY SECTION WILL BE 7'-5" W.
 - 3) CONTRACTOR TO RUN LIME SERIES BEFORE CONSTRUCTION.

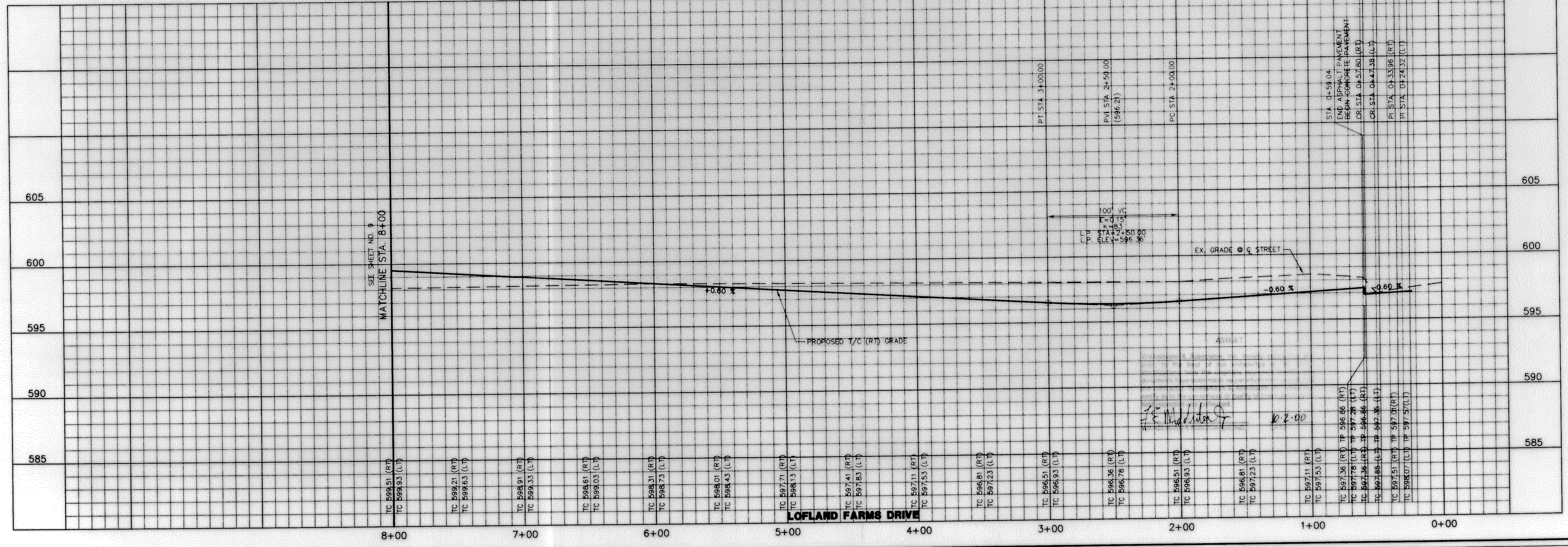


CURVE TABLE						
CURVE	RADIUS	DELTA	TANGENT	LENGTH	CHORD	BEARING
C-1	500.00'	45°52'44"	211.61'	400.37'	389.76'	S 21°55'43" W



BENCHMARK: ELEV. = 600.69
CITY OF ROCKWALL R-19
BRASS MONUMENT AT THE N/W CORNER OF
SILVERVIEW & DIAMOND WAY. 500' ± SOUTH OF
S.H. 276.

BENCHMARK: ELEV. = 583.56
R.R. SPIKE SET IN THE CENTERLINE OF S.H. 276
3600± WEST OF F.M. 549



APPROV.	Winkelmann & Associates, Inc.
REVISION	CONSULTING CIVIL ENGINEERS • SURVEYORS 9750 Highway 190, Suite 100, Rockwall, TX 75087 (972) 962-2000 FAX www.winkelmanna.com
DATE	2-9-00
NO.	
W.H. BARD SURVEY, ABSTRACT NO. 25 CITY OF ROCKWALL ROCKWALL COUNTY, TEXAS	
CONTINENTAL HOMES 621 WEST COLLEGE STREET GRAPEVINE, TEXAS 76051	
PAVING PLAN & PROFILE LOFLAND FARMS DRIVE STA. 0+00 TO 8+00	
Scale: 1" = 40'	Date: 2/9/00
Designed By: MK	
Drawn By: DA	
Checked By: FEM	
File: 3200P8.DWG	View:
Project No.: 320001.01	
8	
OF	
32	