

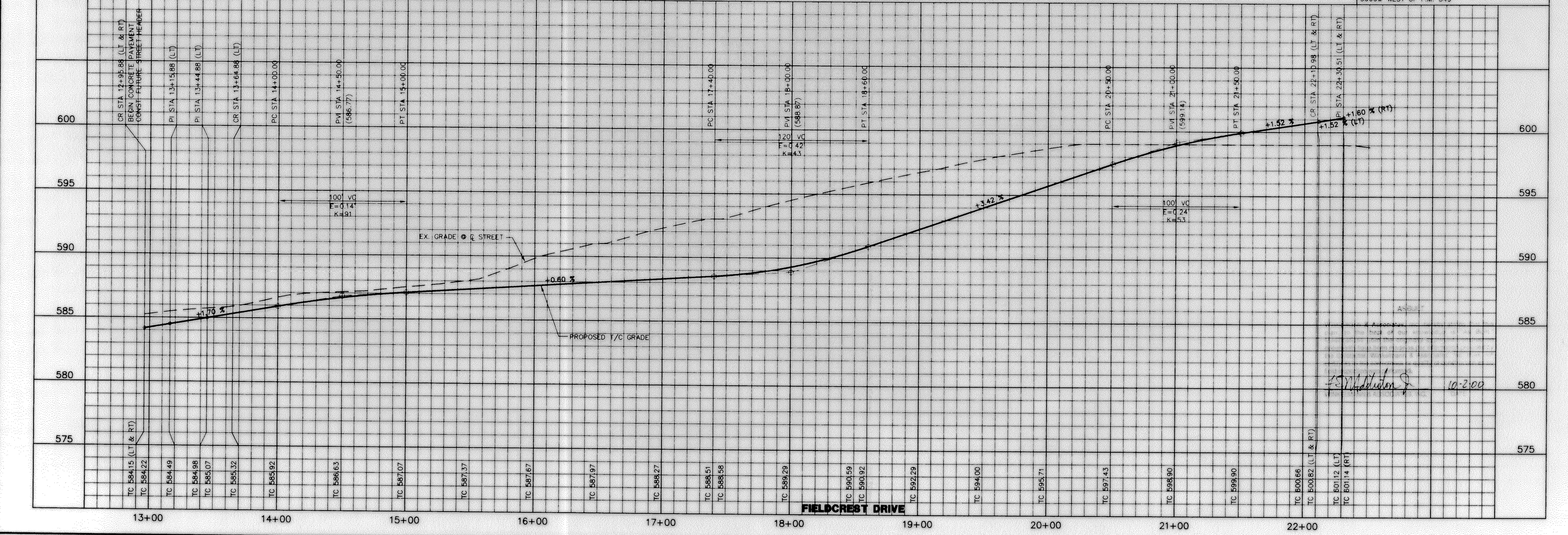
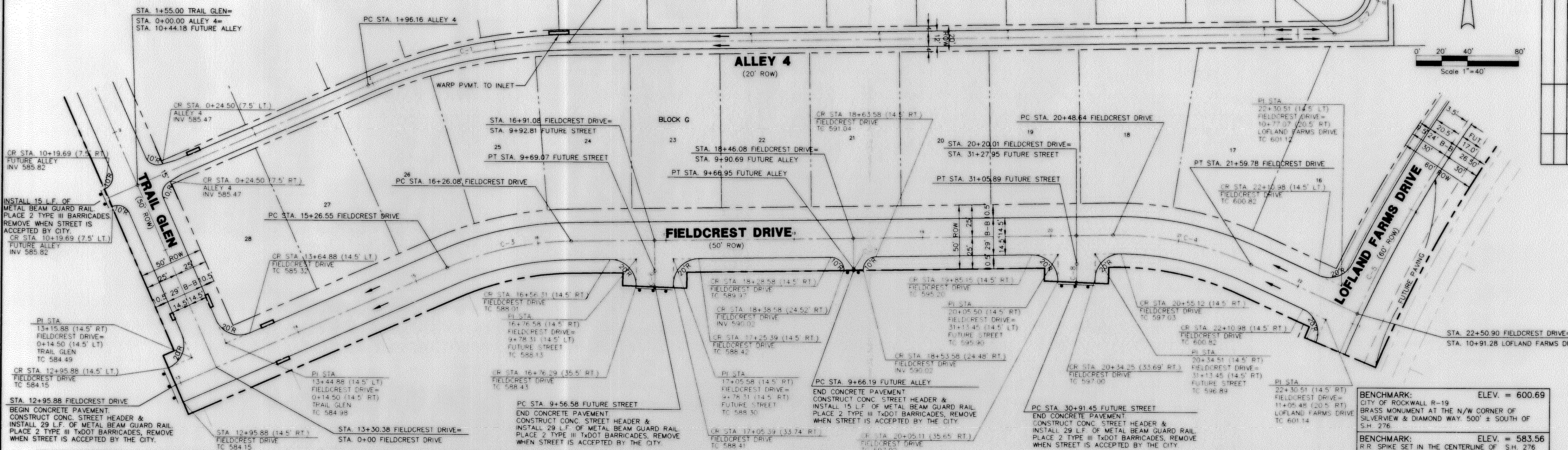
NOTE:
 1) PAVEMENT FOR STREETS SHALL CONSIST OF 6" 3500 P.S.I. REINFORCED CONCRETE AND 6" LIME-STABILIZED SUBGRADE WITH 6" PARABOLIC CROWN.
 2) PAVEMENT FOR ALLEYS SHALL CONSIST OF 4000 P.S.I. REINFORCED CONCRETE AND 6" LIME-STABILIZED SUBGRADE WITH 5" INVERT. TYPICAL ALLEY SECTION WILL BE 7'-5"-7".
 3) CONTRACTOR TO RUN LIME SERIES BEFORE CONSTRUCTION.

LEGEND

TC	TOP OF CURB
CR	CURB RETURN
FL	FLOW LINE
—	FUTURE STREET STATION
→	FLOW ARROW

CURVE TABLE

CURVE	RADIUS	DELTA	TANGENT	LENGTH	CHORD	BEARING
C-1	405.00'	22°48'43"	81.71'	161.25'	160.19'	N 77°34'59" W
C-2	36.00'	90°00'00"	36.00'	56.55'	50.91'	N 43°59'21" W
C-3	250.00'	22°48'43"	50.44'	99.54'	98.88'	N 77°34'59" W
C-4	250.00'	25°28'16"	56.50'	111.14'	110.23'	S 78°16'31" W
C-5	1000.00'	22°18'29"	197.17'	389.35'	386.89'	S 33°42'50" W
C-6	250.00'	02°51'47"	6.25'	12.49'	12.49'	S 00°25'14" W
C-7	405.00'	00°10'44"	0.63'	1.26'	1.26'	N 00°55'17" W
C-8	250.00'	03°18'38"	7.22'	14.44'	14.44'	N 00°38'40" W



APPROV. _____
 REVISION _____
 NO. _____ DATE _____

Winkelmann & Associates, Inc.
 CONSULTING CIVIL ENGINEERS & SURVEYORS
 621 WEST COLLEGE STREET
 GRAPEVINE, TEXAS 76051
 (972) 485-7000
 www.winkelmann.com

W.H. BAIRD SURVEY, ABSTRACT NO. 25
 CITY OF ROCKWALL
 ROCKWALL COUNTY, TEXAS
 CONTINENTAL HOMES
 621 WEST COLLEGE STREET
 GRAPEVINE, TEXAS 76051

**PAVING PLAN & PROFILE FIELDCREST DRIVE
 STA. 12+95.88 TO 22+50.90
 PAVING PLAN ALLEY 4
 STA. 0+00 TO 10+50**

Scale: 1"=40' Date: 2/9/00
 Designed By: MK
 Drawn By: DA
 Checked By: FEM
 File: 3200P5.DWG View:
 Project No.: 32001.01

SHEET 6 OF 32