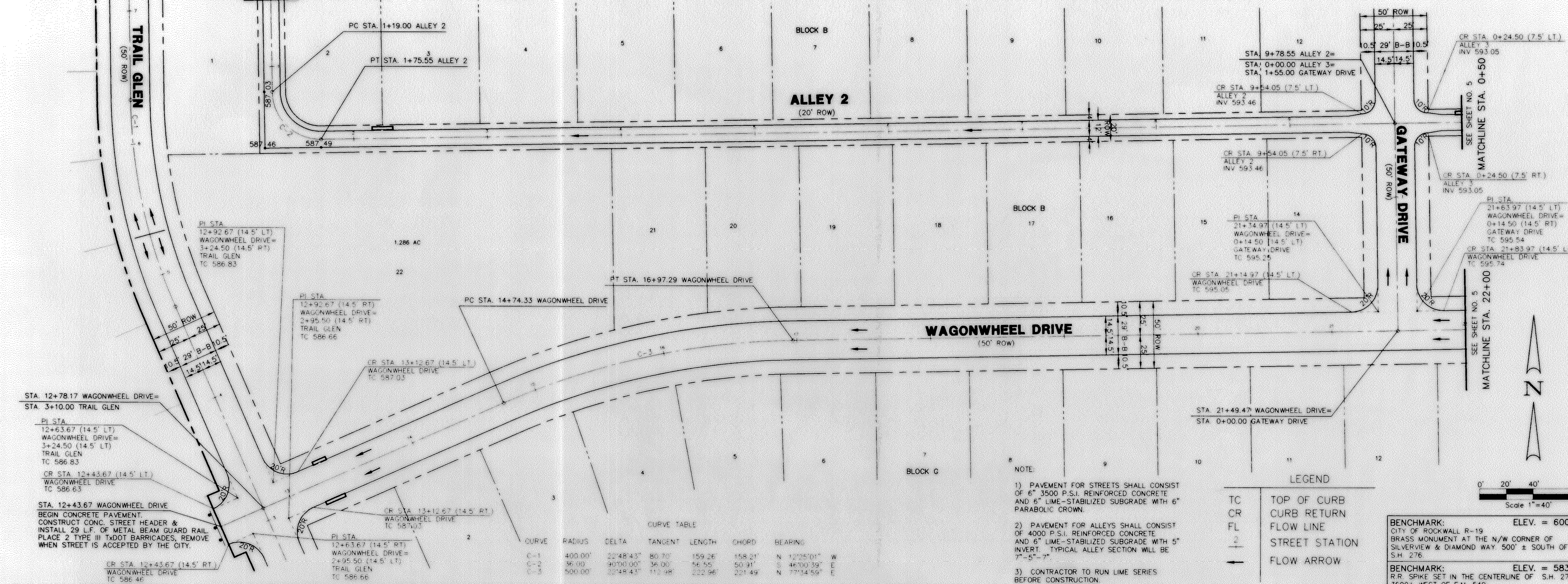


MATCHLINE STA. 0+50  
SEE SHEET NO. 2



NOTE:  
 1) PAVEMENT FOR STREETS SHALL CONSIST OF 6" 3500 P.S.I. REINFORCED CONCRETE AND 8" LIME-STABILIZED SUBGRADE WITH 6" PARABOLIC CROWN.  
 2) PAVEMENT FOR ALLEYS SHALL CONSIST OF 4000 P.S.I. REINFORCED CONCRETE AND 6" LIME-STABILIZED SUBGRADE WITH 5" INVERT. TYPICAL ALLEY SECTION WILL BE 7'-5"-7".  
 3) CONTRACTOR TO RUN LIME SERIES BEFORE CONSTRUCTION.

LEGEND

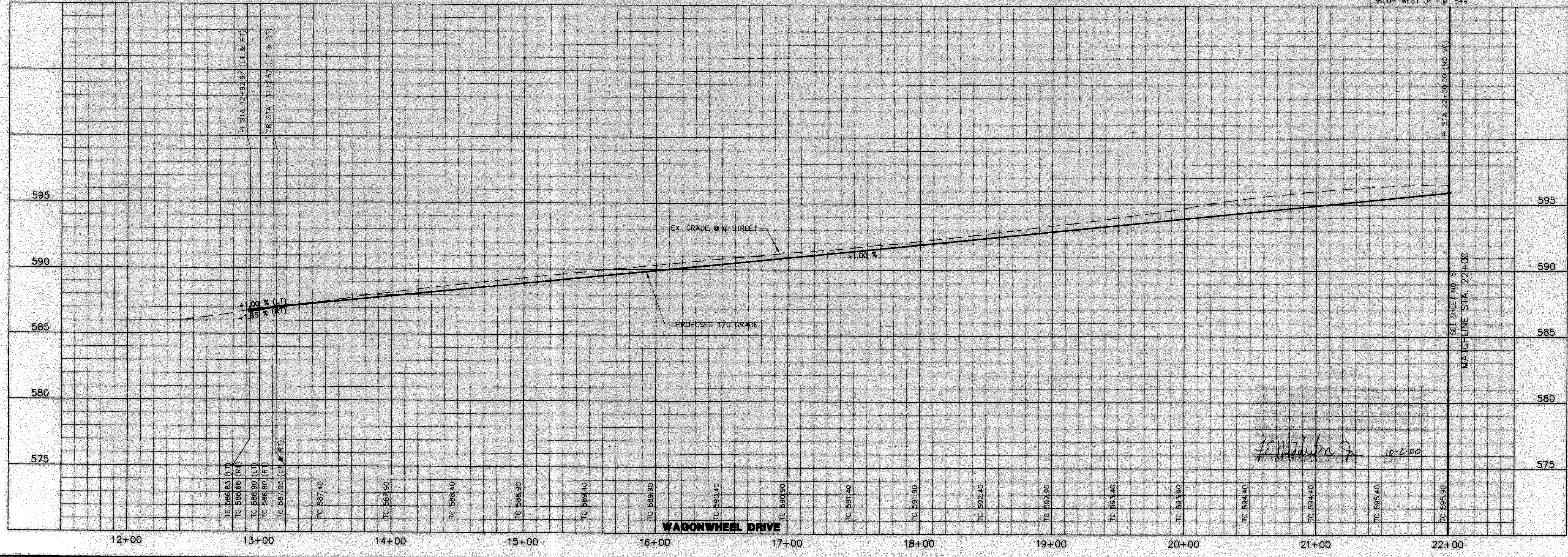
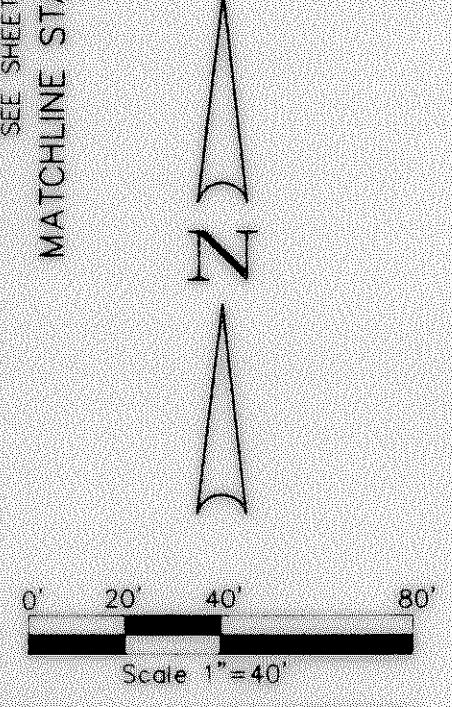
TC	TOP OF CURB
CR	CURB RETURN
FL	FLOW LINE
2	STREET STATION
→	FLOW ARROW

CURVE TABLE

CURVE	RADIUS	DELTA	TANGENT	LENGTH	CHORD	BEARING
C-1	400.00'	22°48'43"	80.70'	159.26'	158.21'	N 12°25'01" W
C-2	36.00'	90°00'00"	36.00'	56.55'	50.91'	S 46°00'39" E
C-3	500.00'	22°48'43"	112.98'	222.96'	221.49'	N 77°34'59" E

BENCHMARK:  
 CITY OF ROCKWALL R-19  
 BRASS MONUMENT AT THE N/W CORNER OF  
 SILVERVIEW & DIAMOND WAY 500' ± SOUTH OF  
 S.H. 276  
 ELEV. = 600.69

BENCHMARK:  
 R.R. SPIKE SET IN THE CENTERLINE OF S.H. 276  
 3600± WEST OF F.M. 549  
 ELEV. = 583.56



Winkelmann & Associates, Inc.  
 CONSULTING CIVIL ENGINEERS & SURVEYORS  
 6000 Rockwall Road, Suite 100  
 Rockwall, Texas 75087  
 (972) 962-5500  
 www.winkelmanna.com

APPROVED: [Signature]

W.H. BAIRD SURVEY, ABSTRACT NO. 25  
 CITY OF ROCKWALL  
 ROCKWALL COUNTY, TEXAS  
 CONTINENTAL HOMES  
 621 WEST COLLEGE STREET  
 GRAPEVINE, TEXAS 76051

**PAVING PLAN & PROFILE WAGONWHEEL DRIVE**  
**STA. 12+78.17 TO 22+00**  
**PAVING PLAN ALLEY 2 STA. 0+50 TO 9+78.55**  
**PAVING PLAN ALLEY 3 STA. 0+00 TO 0+50**

Scale: 1" = 40'  
 Date: 2/9/00  
 Designed By: MK  
 Drawn By: DA  
 Checked By: FEM  
 File: 3200P3.DWG  
 Project No.: 32001.01

SHEET  
**4**  
 OF  
**32**