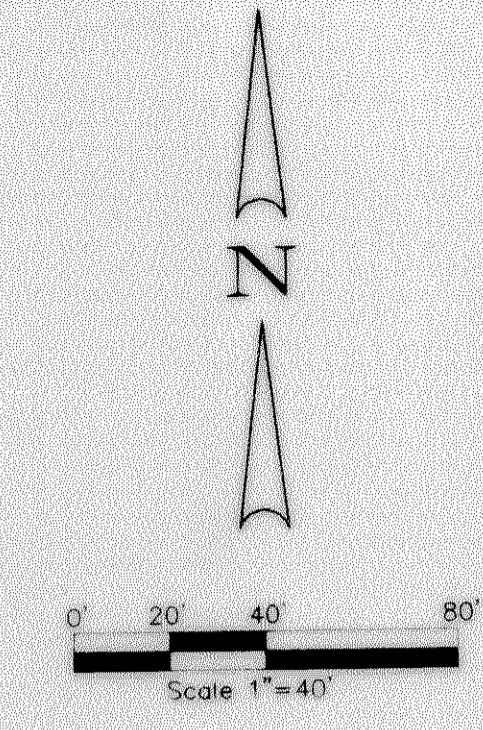
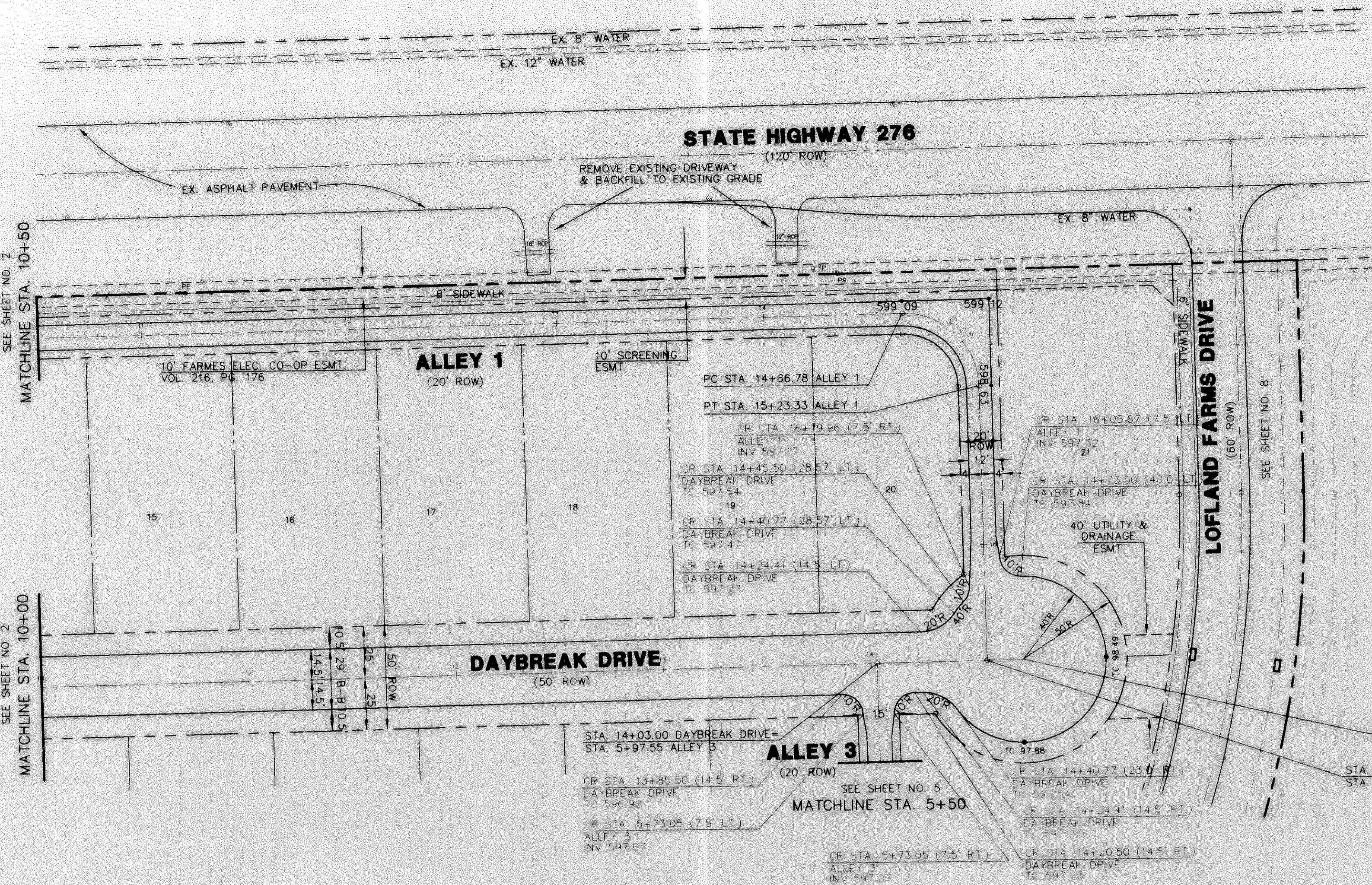


C:\RUSSELL\2001P2.dwg New Feb 09 09:10:08 2000 RUSSELL



NOTE:
 1) PAVEMENT FOR STREETS SHALL CONSIST OF 6" 3500 P.S.I. REINFORCED CONCRETE AND 6" LIME-STABILIZED SUBGRADE WITH 6" PARABOLIC CROWN.
 2) PAVEMENT FOR ALLEYS SHALL CONSIST OF 4000 P.S.I. REINFORCED CONCRETE AND 6" LIME-STABILIZED SUBGRADE WITH 5" INVERT. TYPICAL ALLEY SECTION WILL BE 7'-5"-7".
 3) CONTRACTOR TO RUN LIME SERIES BEFORE CONSTRUCTION.

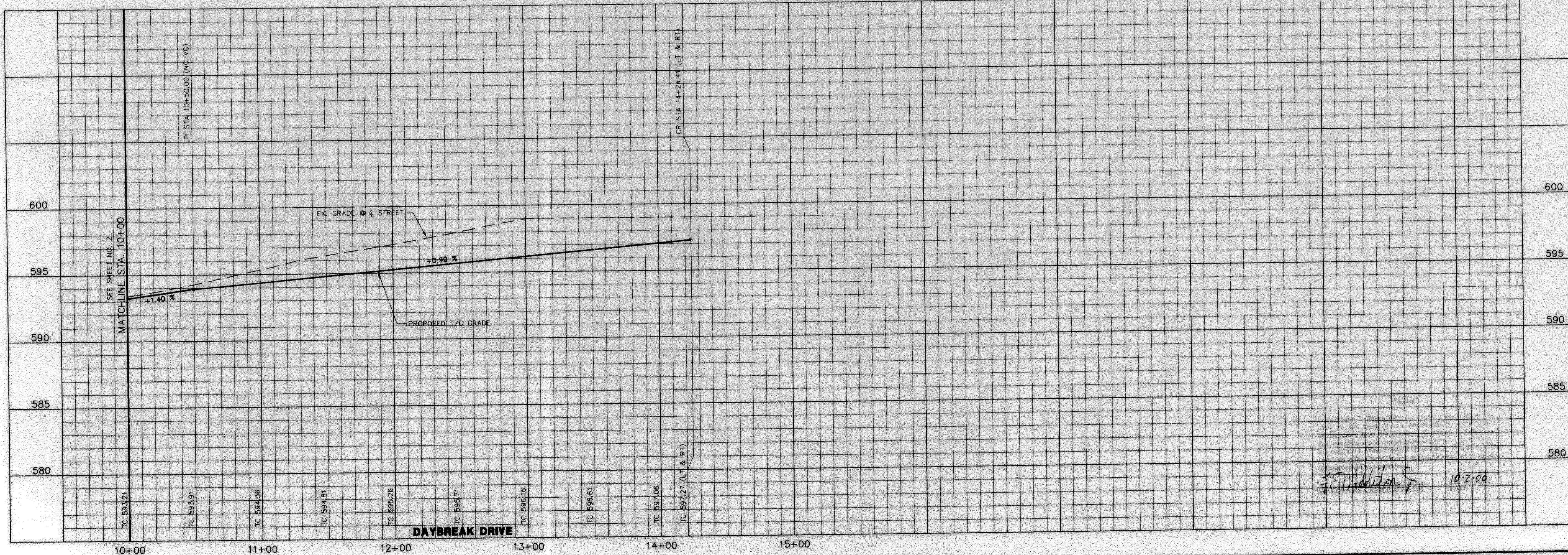
LEGEND

TC	TOP OF CURB
CR	CURB RETURN
FL	FLOW LINE
+	STREET STATION
→	FLOW ARROW

CURVE TABLE

CURVE	RADIUS	DELTA	TANGENT	LENGTH	CHORD	BEARING
C-1	36.00'	90°00'16"	36.00'	56.56'	50.91'	S 46°00'47" E

BENCHMARK: ELEV. = 600.69
 CITY OF ROCKWALL R-19
 BRASS MONUMENT AT THE N/W CORNER OF
 SILVERVIEW & DIAMOND WAY, 500' ± SOUTH OF
 S.H. 276.
 BENCHMARK: ELEV. = 583.56
 R.R. SPIKE SET IN THE CENTERLINE OF S.H. 276
 3600± WEST OF F.M. 549



APPROV. _____
 REVISION _____
 NO. _____ DATE _____

Winkelmann & Associates, Inc.
 CONSULTING CIVIL ENGINEERS • SURVEYORS
 6700 Wilcrest Park Drive, Suite 100
 Dallas, Texas 75220
 (972) 892-7000 FAX
 www.winkelmann.com

W.H. BAIRD SURVEY, ABSTRACT NO. 25
 CITY OF ROCKWALL
 ROCKWALL COUNTY, TEXAS
 CONTINENTAL HOMES
 621 WEST COLLEGE STREET
 GRAPEVINE, TEXAS 76051

PAVING PLAN & PROFILE DAYBREAK DRIVE
STA. 10+00 TO 14+73.50
PAVING PLAN ALLEY 1 STA. 10+50 TO 16+55.67
PAVING PLAN ALLEY 3 STA. 5+50 TO 5+97.55

Scale: H. 1"=40' V. 1"=4' Date: 2/9/00
 Designed By: MK
 Drawn By: DA
 Checked By: FEM
 File: 3200P2.DWG View:
 Project No.: 32001.01

SHEET
3
 OF
32