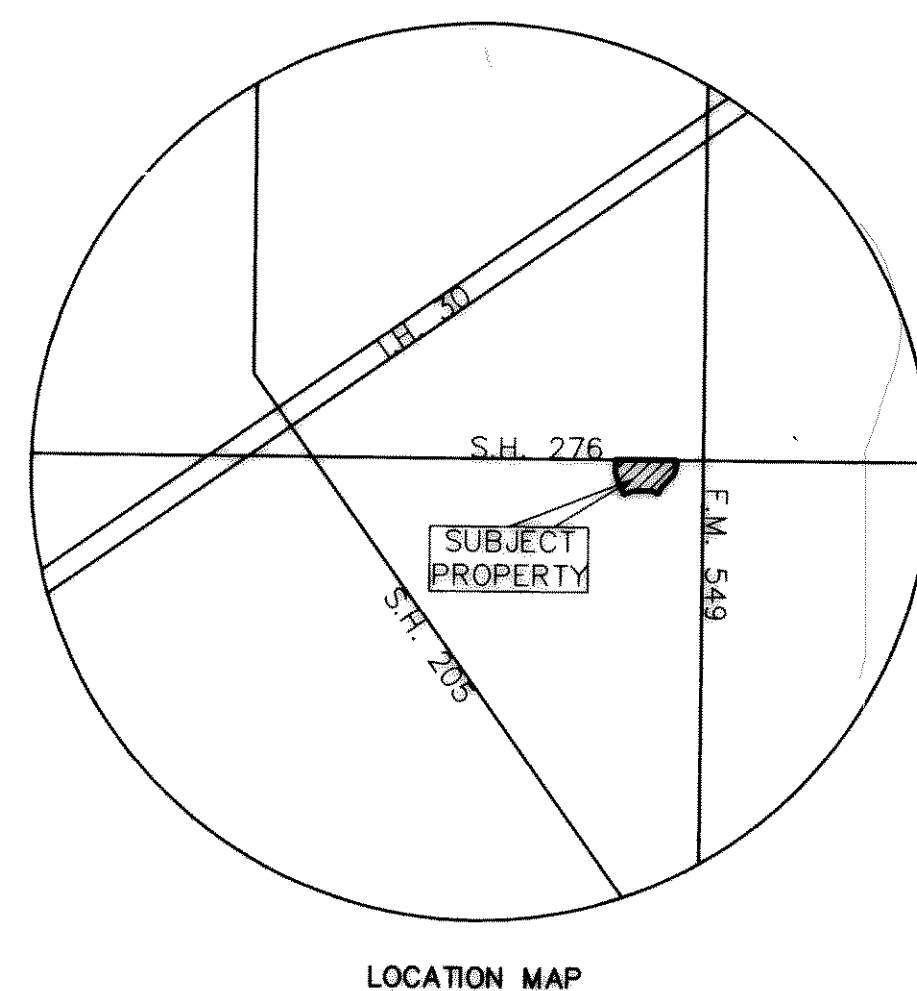


CONSTRUCTION PLANS FOR LOFLAND FARMS

PHASE ONE



LOCATION MAP

ALL CONTRACTORS TO USE STANDARD DETAILS
PER CITY OF ROCKWALL.

CITY OF ROCKWALL

ROCKWALL COUNTY, TEXAS

APRIL 10, 2000

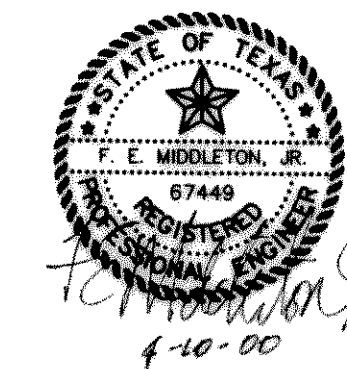
DEVELOPER:

CONTINENTAL HOMES
621 W. COLLEGE STREET
GRAPEVINE, TEXAS 76051

ASBUILT

Winkelmann & Associates, Inc. hereby states that this plan, to the best of our knowledge as of the date of this plan, is a true and correct copy of the original documents. Modifications have been made as per information provided by the contractor, Winkelmann & Associates, Inc. We do not certify as to the correctness or quality of construction or field inspection was performed.

F. E. Middleton, Jr.
F. E. MIDDLETON, JR.
REGISTERED PROFESSIONAL ENGINEER
NO. 67449
STATE OF TEXAS
APR 10 2000
DATE



Winkelmann & Associates, Inc.

CONSULTING CIVIL ENGINEERS ■ SURVEYORS
6750 HILLCREST PLAZA DRIVE, SUITE 100 (972) 490-7090
DALLAS, TEXAS 75230 (972) 490-7099 FAX

SHEET INDEX

- COVER SHEET
- FINAL PLAT
- 1. DRAINAGE AREA MAP & CALCULATIONS
- 1A. STORM SEWER PIPE CALCULATIONS
- PAVING PLANS & PROFILES
- 2. DAYBREAK DRIVE STA. 0+00 TO 10+00
ALLEY "1" STA. 0+00 TO 10+50
ALLEY "2" STA. 0+00 TO 0+50
- 3. DAYBREAK DRIVE STA. 10+00 TO 14+73.50
ALLEY "1" STA. 10+50 TO 16+55.67
ALLEY "3" STA. 5+50 TO 5+97.55
- 4. WAGONWHEEL DRIVE STA. 12+78.17 TO 22+00
ALLEY "2" STA. 0+50 TO 9+78.55
ALLEY "3" STA. 0+00 TO 0+50
- 5. WAGONWHEEL DRIVE STA. 22+00 TO 24+61.28
ALLEY "3" STA. 0+50 TO 5+50
ALLEY "4" STA. 10+50 TO 11+30.16
- 6. FIELDCREST DRIVE STA. 12+95.88 TO 22+50.90
ALLEY "4" STA. 0+00 TO 10+50
- 7. TRAIL GLEN STA. 0+00 TO 10+05.09
- 8. LOFLAND FARMS DRIVE STA. 0+00 TO 8+00
- 9. LOFLAND FARMS DRIVE STA. 8+00 TO 11+24.44
- 10. GATEWAY DRIVE STA. 0+00 TO 3+10
- 10A. STATE HIGHWAY 276 - PAVING & STRIPING PLAN
- 10B. STATE HIGHWAY 276 - PAVING & STRIPING PLAN
- ALLEY PROFILES
- 11. ALLEY "1" STA. 0+00 TO 16+55.67
- 12. ALLEY "2" STA. 0+00 TO 9+78.55
ALLEY "3" STA. 0+00 TO 5+97.55
- 13. ALLEY "4" STA. 0+00 TO 11+30.16
- 14. CHANNEL GRADING & STORM LINE "6" PROFILE
- 15. STORM SEWER PLAN
- STORM SEWER PROFILES
- 16. LINE "1", LINE "2", & LINE "3"
- 17. LINE "5"
- 18. LAT "5-E" & LAT "5-G", LINE "4" & LINE "7"
- 19. WATER & SANITARY SEWER PLAN
- 19A. OFFSITE SANITARY SEWER PLAN-LINE "E"
- SANITARY SEWER PROFILES
- 20. LINE "A" STA. -0+08 TO 17+47.81
- 21. LINE "B" STA. 0+00 TO 17+90
- 22. LINE "C" STA. 0+00 TO 11+52.73
- OFFSITE SANITARY SEWER PLAN & PROFILE
- 23. LINE "D" STA. 0+42.67 TO 10+00
- 24. LINE "D" STA. 10+00 TO 20+00
- 25. LINE "D" STA. 20+00 TO 30+00
- 26. LINE "D" STA. 30+00 TO 35+41.05
- 26A. LINE "E" STA. 0+00 TO 16+83.45
- 27. LOT GRADING PLAN
- 28. LOT GRADING PLAN
- 29. STORM WATER POLLUTION PREVENTION PLAN
- 30. STORM WATER POLLUTION PREVENTION PLAN -DETAILS
- 31. TREESCAPE PLAN - REMOVAL
- 32. TREESCAPE PLAN - PLANTING

DELETE