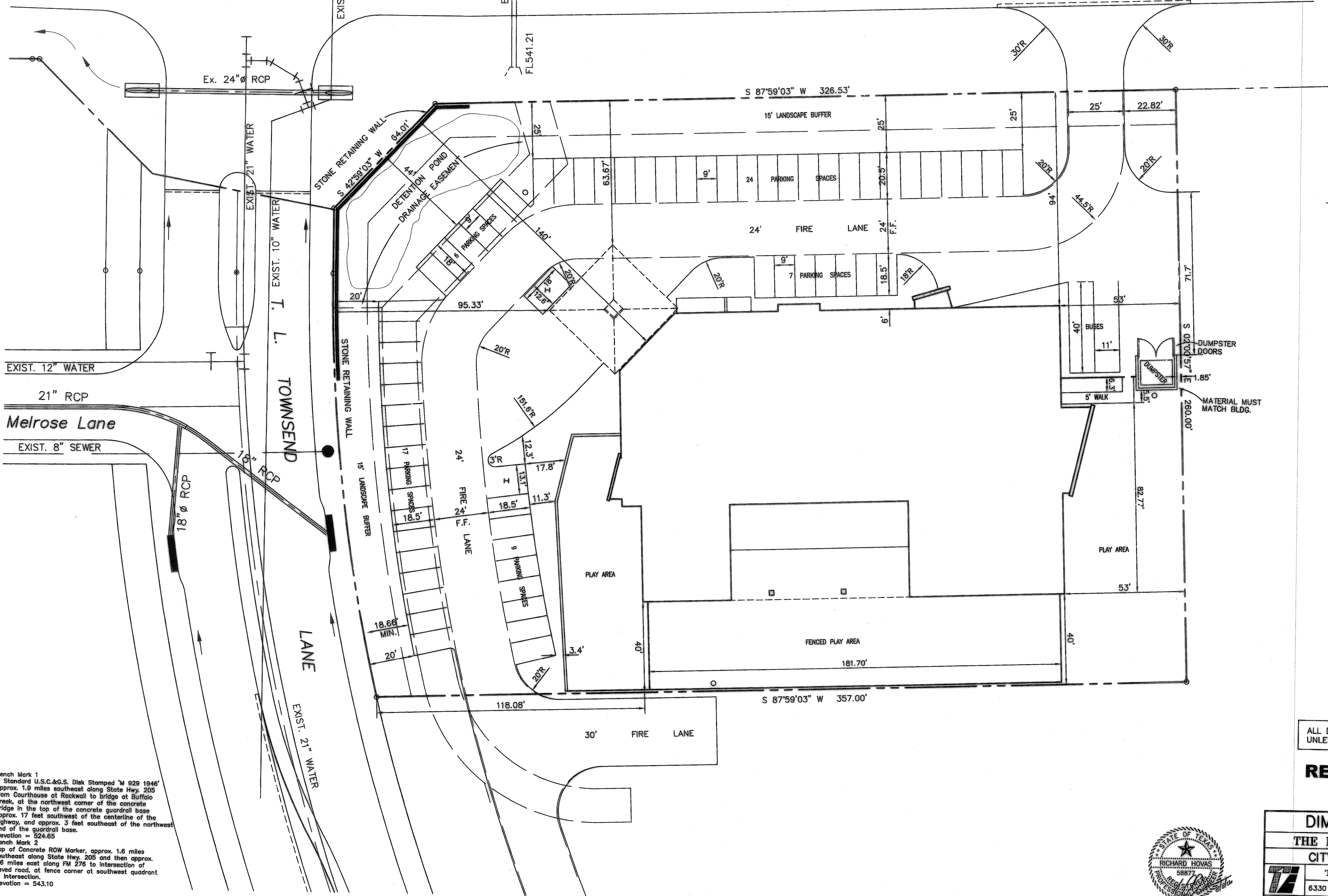


Exist. Asphalt Pavement

STATE HIGHWAY No. 276



**PARKING PROVIDED**  
PARKING SPACES 62  
HANDICAP SPACES 2 ~ "H"  
BUS SPACES 2

EXIST. 12" WATER  
21" RCP  
Melrose Lane  
EXIST. 8" SEWER

EXIST. 21" WATER  
EXIST. 10" WATER  
TOWNSEND LANE  
EXIST. 21" WATER

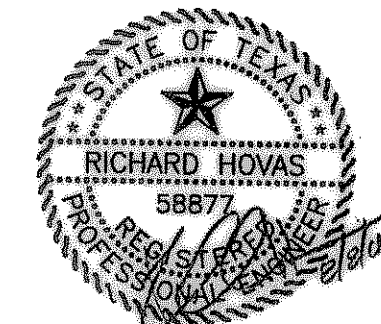
Bench Mark 1  
A Standard U.S.C.&G.S. Disk Stamped 'M 929 1946'  
Approx. 1.9 miles southeast along State Hwy. 205  
from Courthouse at Rockwall to bridge at Buffalo  
Creek, at the northwest corner of the concrete  
bridge in the top of the concrete guardrail base  
approx. 17 feet southwest of the centerline of the  
highway, and approx. 3 feet southeast of the northwest  
end of the guardrail base.  
Elevation = 524.65  
Bench Mark 2  
Top of Concrete ROW Marker, approx. 1.6 miles  
southeast along State Hwy. 205 and then approx.  
0.5 miles east along FM 276 to intersection of  
paved road, at fence corner at southwest quadrant  
of intersection.  
Elevation = 543.10

ALL DIMENSIONS ARE TO BACK OF CURB  
UNLESS OTHERWISE NOTED.

**RECORD DRAWING**  
8/10/2006

**DIMENSION CONTROL**  
THE LARSEN SCHOOL ADDITION  
CITY OF ROCKWALL, TEXAS

TIPTON ENGINEERING, INC.						
6330 Broadway Blvd. ~ Suite C ~ Garland, Texas 75043						
DESIGN	DRAWN	DATE	SCALE	NOTES	FILE	NO.
TEI, Inc.	TEI, Inc.	8-2004	1"=20'			2



4767BASE 12-21-04