

DEVELOPMENT PLANS

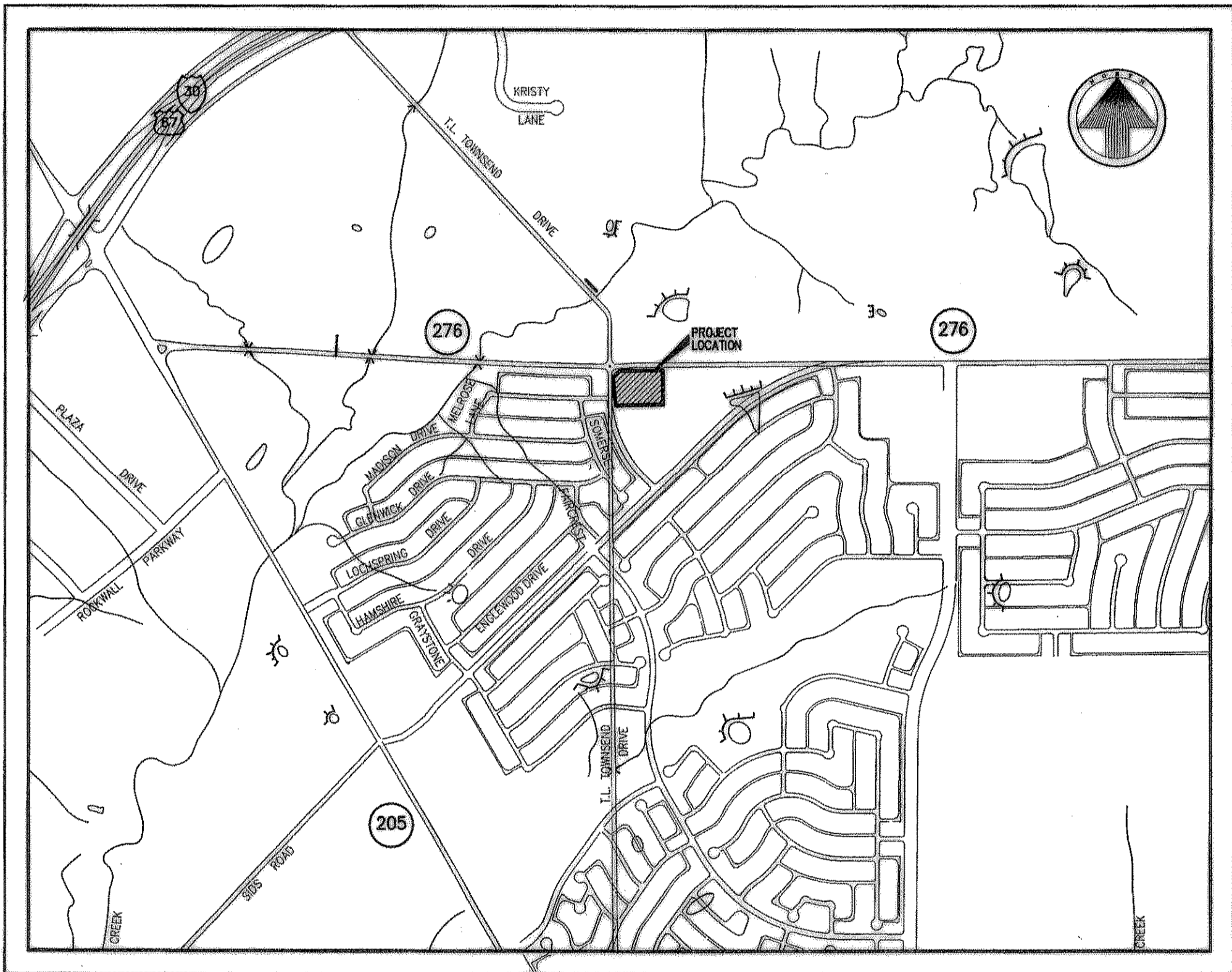
FOR

THE LARSEN SCHOOL ADDITION

CITY OF ROCKWALL, TEXAS

GENERAL NOTES

1. All street and alleys intersections and connections shall be built by the developer.
2. Excavation from streets to be deposited in low areas to allow proper drainage.
3. All existing ditches, except as noted on drainage plans, are to be filled to conform to surrounding terrain.
4. It will be the responsibility of the developer and/ or the contractor to protect and maintain to proper line and grade all public utilities, manholes, cleanouts, valve boxes, fire hydrants, etc. during the construction of this project, prior to and after placing permanent pavement.
5. All materials and workmanship shall conform to the City Standards and Specifications.
6. All Fill Shall be Compacted with Sheep's Foot Roller.
7. Use NTCOG and City of Rockwall standards and details including the City of Rockwall's ammendments to NTCOG.



LOCATION MAP
NOT TO SCALE

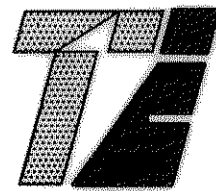
INDEX

Sheet No.	Description
1	Final Plat
2	Dimension Control Plan
3	Drainage Area Map
4	Paving & Grading Plan
5	Left Turn Lane
6	Sewer & Storm Sewer Profiles
7	Water & Sewer Plan
8	Storm Water Pollution Prevention Plan
9	Landscape Plan

PREPARED FOR

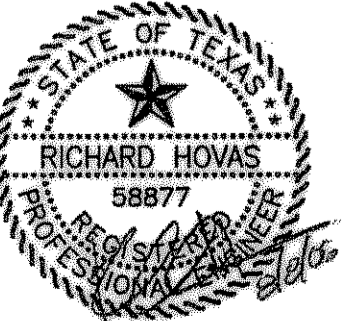
BRAD LARSEN

2101 Northwest Parkway ~ Garland, Texas 75040



TIPTON ENGINEERING, INC.

6330 Broadway Blvd. ~ Suite C ~ Garland, Texas 75043 (972) 226-2967



RECORD DRAWING

8/10/2006

4767 12-21-2004

THE LARSEN SCHOOL ADDITION