

PLAN OF RECORD

This record drawing is a compilation of the sealed engineering drawings for permit and construction, by others, modified based on a field observation by BIG RED DGS. The information shown on the record drawing that was provided for permit and construction, by others, not associated with the record drawing engineer, cannot be verified for accuracy or completeness. Review is for general conformance with construction documents and on-site improvements. The original approved sealed drawings are on file at the offices of the City of Rockwall.

Therefore, with the exceptions noted and clouded, this "Plan of Record" is true and correct to the best of my knowledge and was prepared under my supervision.

[Signature]



September 28, 2018

Definition System	Allowable 5 Yr Release Rate (cfs)	Peak Storage (cf)	Peak Elevation (ft)	Calculated Release Rate (cfs)	Allowable 10 Yr Release Rate (cfs)	Peak Storage (cf)	Peak Elevation (ft)	Calculated Release Rate (cfs)	Allowable 25 Yr Release Rate (cfs)	Peak Storage (cf)	Peak Elevation (ft)	Calculated Release Rate (cfs)	Allowable 100 Yr Release Rate (cfs)	Peak Storage (cf)	Peak Elevation (ft)	Calculated Release Rate (cfs)
A	0.83	5367	551.26	0.83	0.89	6416	551.52	0.87	1.26	8973	551.77	0.91	1.71	8877.60	553.00	1.71

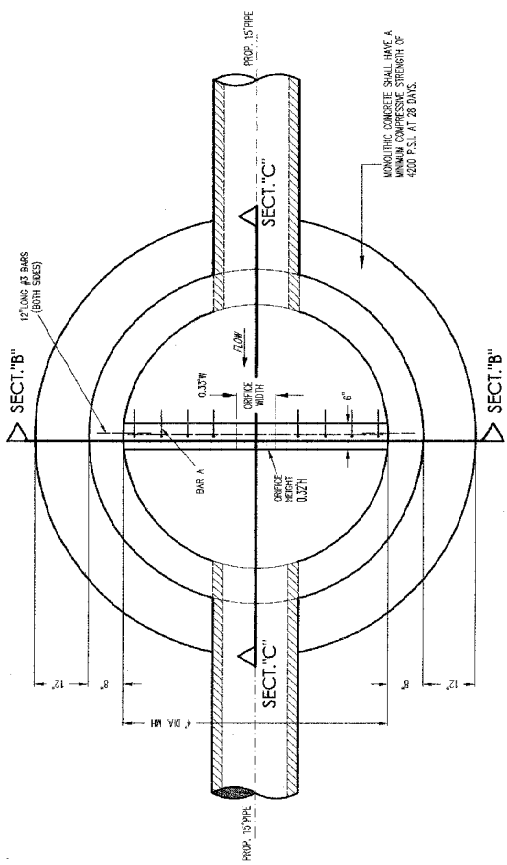
Larsen Retail Site Basin A	
5 Yr Release Rate =	0.83
Flow of MH =	546.50
Flow of Weir =	546.50
Top of Weir =	552.73
Corfice =	0.6
Clear =	3.0

Weir Flow $Q = CWA^{1.5}$	
W (ft)	0.32
H (ft)	0.05
Center Elevation	546.66
Area (sq ft)	0.11
Flow (cfs)	0.83
Flow (MGD)	0.003
Flow (MGD)	0.003
Flow (MGD)	0.003

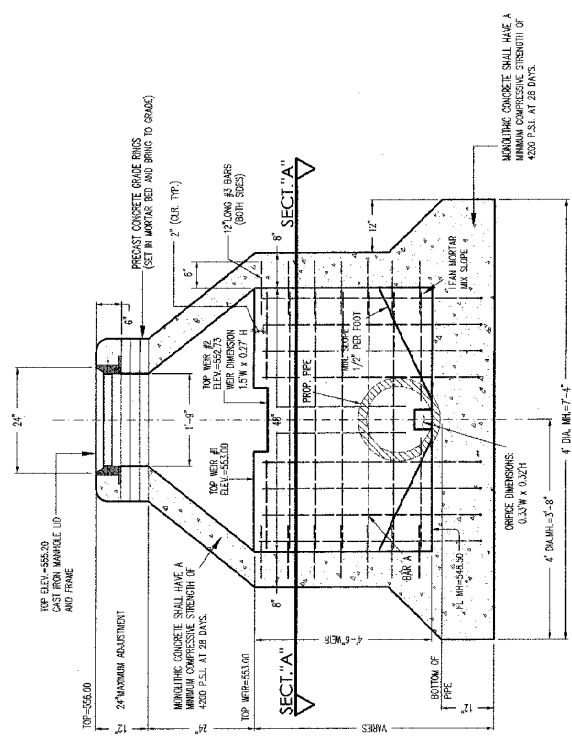
THE ENGINEER'S SEAL APPEARING IN THIS BOX APPLIES ONLY TO THE WEIR CALCULATIONS FOR THE CONCRETE WORK ON THIS SHEET.



- NOTES:
1. WHERE PIPES ENTER A MANHOLE THERE SHALL BE MINIMUM OF TWO-TENTHS OF A FOOT (0.2') DROP BETWEEN INVERTS.
 2. WHERE UNEQUAL PIPE ENTER A MANHOLE, THE CROWN OF THE PIPES SHALL BE SET AT THE SAME ELEVATION.
 3. CONCRETE SHALL BE A MONOLITHIC POUR.
 4. ADDITIONAL MANHOLE REINFORCING OTHER THAN SHOWN IN DETAIL BELOW SHALL BE BY MANUFACTURER'S RECOMMENDATIONS.
 5. ALL REINFORCING STEEL SHALL HAVE A MINIMUM OF 2" CLEAR COVER.



SECTION DETAIL "A"



SECTION DETAIL "B"

NOTE: ALL REINFORCING STEEL FOR WEIR SHALL BE EPOXY COATED.

OUTLET CONTROL STRUCTURE "A"

THE ENGINEER'S SEAL APPEARING IN THIS BOX APPLIES ONLY TO THE STRUCTURAL DETAILS FOR THE CONCRETE WORK ON THIS SHEET.



SITE BENCHMARK: CUT "X" ON TOP OF NORTH CURBLINE OF EXISTING CONCRETE DRIVE APPROX. 45 FEET SOUTH OF SOUTH WALL OF GALAXY RANCH PRIVATE SCHOOL AND 148 FEET +/- EAST OF EXISTING EAST CURBLINE OF T.L. TOWNSEND LANE. ELEVATION = 554.56

NDM
NATHAN D. MAIER
 CONSULTING ENGINEER, INC.
 8000 PARK LANE, SUITE 400
 DALLAS, TEXAS 75231-2142
 214-237-4741

OUTLET CONTROL STRUCTURE "A"
 LARSEN RETAIL DEVELOPMENT
 3.15 ACRES, 114327, MECHANICAL, TEXAS
 SHEET NO. 9 OF 16
 DATE: 09/28/18
 SCALE: AS SHOWN