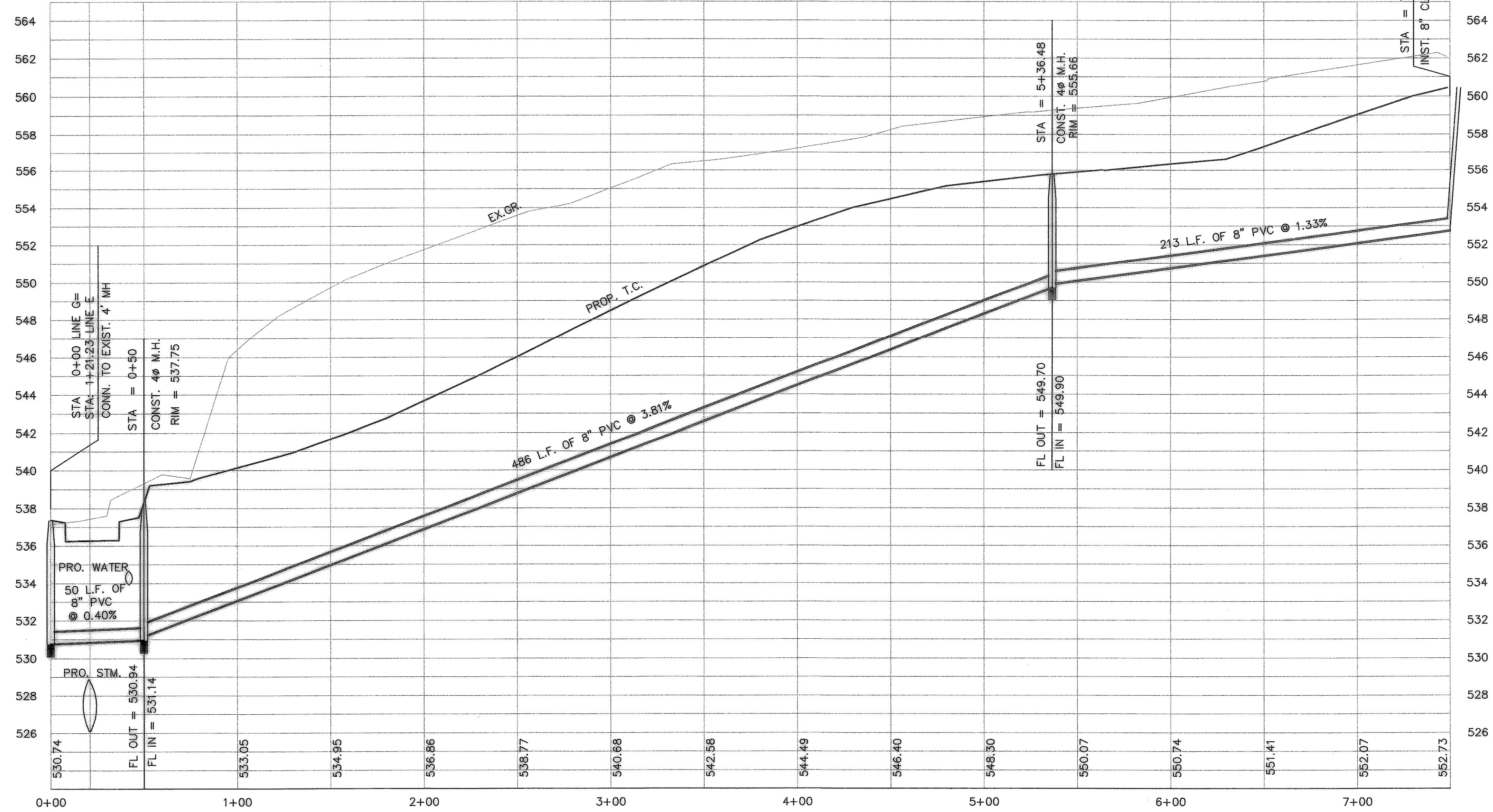
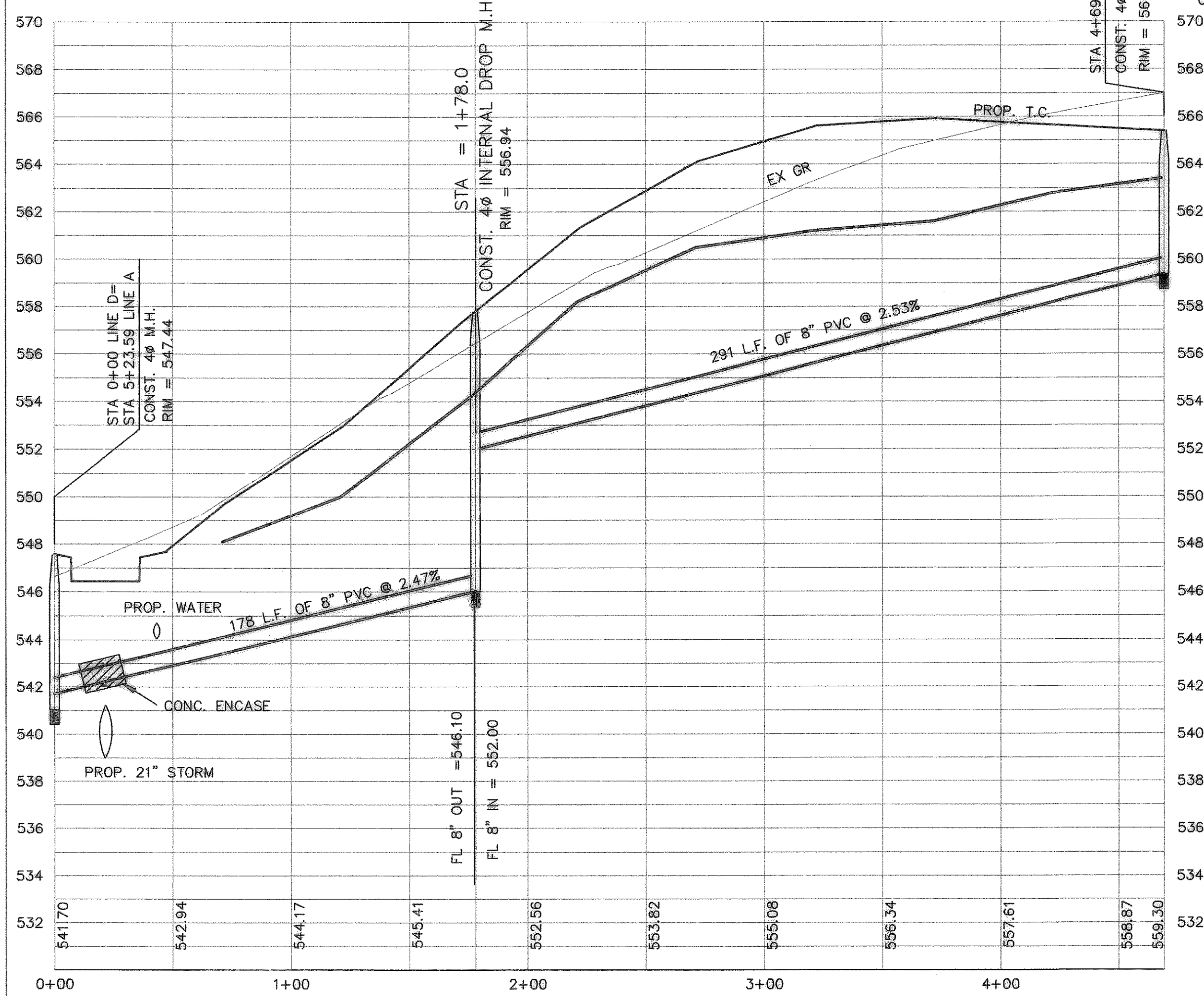


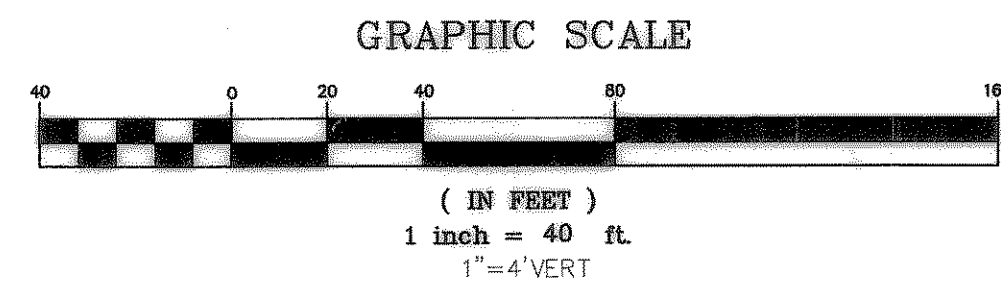
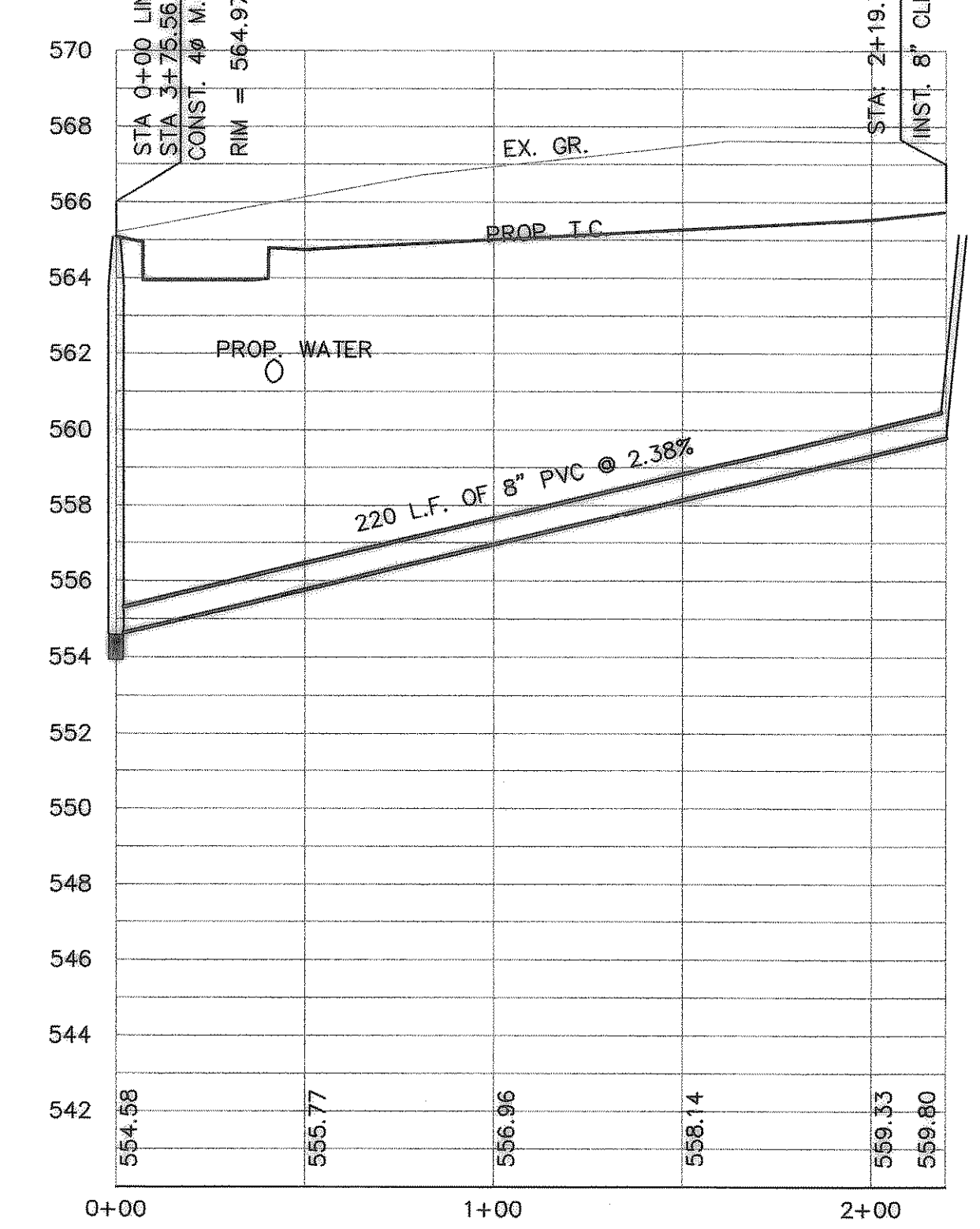
SANITARY SEWER LINE G



SANITARY SEWER LINE D



SANITARY SEWER LINE C



**BENCHMARK:**  
BRASS CAP MONUMENT NO. 10 SET IN CONCRETE IN THE CENTER OF GRASS MEDIAN IN MASTERS DRIVE BETWEEN NORTH LAKESHORE & SHORES BLVD. N 7032464.6317, E 2589554.1518 ELEV. = 524.62

REVISED TO CONFORM TO CONSTRUCTION RECORDS.

*W. D. Douphrate* DATE: 4/16/02

THE SEAL APPEARING ON THIS DOCUMENT WAS AUTHORIZED BY THE BOARD OF PROFESSIONAL ENGINEERS AND SURVEYORS OF THE STATE OF TEXAS, NO. 80102 ON 10/1/02

**DOUPHRATE & ASSOCIATES, INC.**  
ENGINEERING - PROJECT MANAGEMENT - SURVEYING  
2235 RIDGE RD., # 200 ROCKWALL, TEXAS 75087  
PHONE: (972)771-9004 FAX: (972)771-9005

**SANITARY SEWER PROFILES**  
**LINES C, D & G**  
LAKEVIEW SUMMIT, PHASE 2  
CITY OF ROCKWALL, ROCKWALL COUNTY, TEXAS

**REVISION**  
- REVISIONS PER CITY COMMENTS 5/5/02  
- REVISIONS PER CITY COMMENTS 5/11/02

**W.L.D.**  
CHECKED  
**K.E.B.**  
DRAWN  
DATE  
9919-2SSP1  
PROJECT