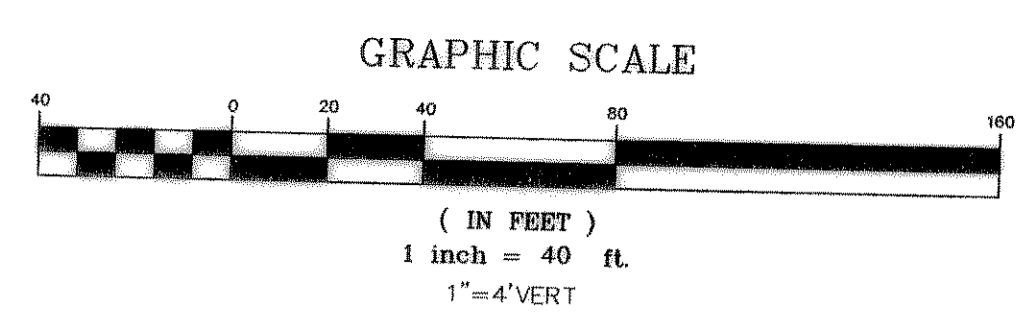
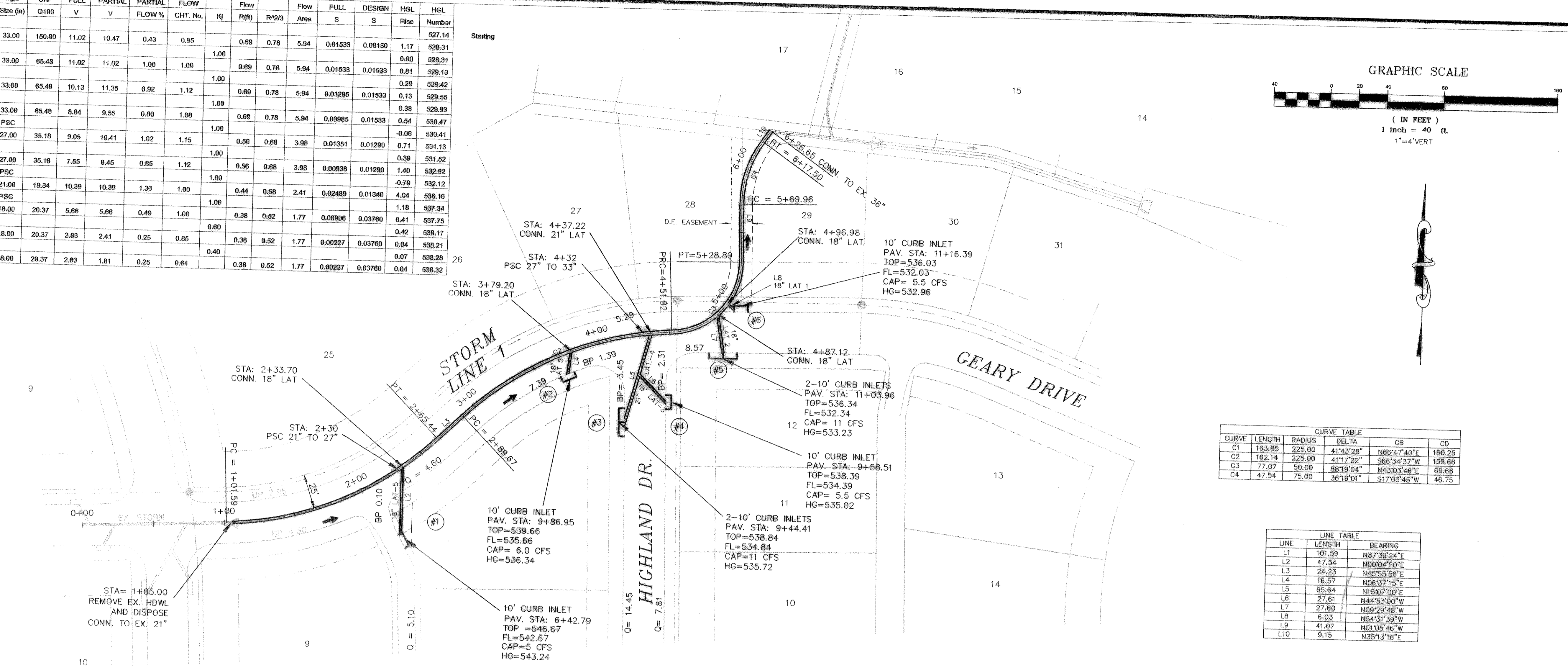
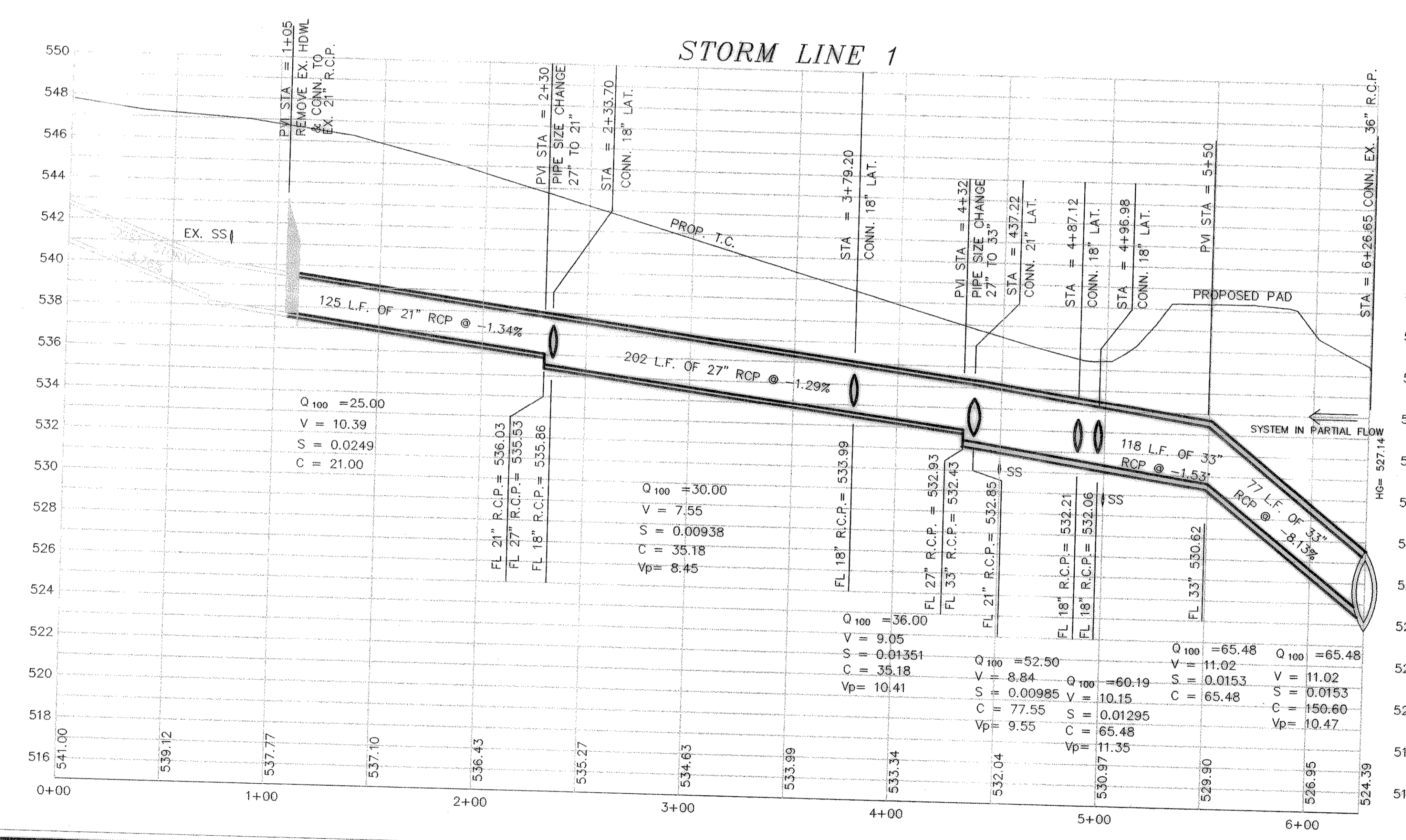


From	To	Length	Box Height	Width	DESIGN Q100	Pipe Size (in)	CAP Q100	FULL V	PARTIAL V	PARTIAL FLOW %	FLOW CHT. No.	Kj	Flow R(f)	Flow R ^{2/3}	Flow Area	FULL S	DESIGN S	HGL Rise	HGL Number
STM-1	626.65	550.00	76.65		65.48	33.00	150.80	11.02	10.47	0.43	0.95		0.69	0.78	5.94	0.01533	0.08130	1.17	527.14
Junction Loss	550.00	496.98	53.04		65.48	33.00	65.48	11.02	11.02	1.00	1.00		0.69	0.78	5.94	0.01533	0.01533	0.81	528.31
Junction Loss	496.98	487.12	9.86		60.19	33.00	65.48	10.13	11.35	0.92	1.12		0.69	0.78	5.94	0.01295	0.01533	0.13	529.42
Junction Loss	487.12	432.00	55.12		52.50	33.00	65.48	8.84	9.55	0.80	1.08		0.69	0.78	5.94	0.00985	0.01533	0.54	529.93
Junction Loss	432.00	379.20	52.80		36.00	27.00	35.18	9.05	10.41	1.02	1.15		0.66	0.68	3.98	0.01351	0.01290	0.71	530.41
Junction Loss	379.20	230.00	149.20		30.00	27.00	35.18	7.65	8.45	0.85	1.12		0.66	0.68	3.98	0.00938	0.01290	1.40	531.13
Junction Loss	230.00	67.81	162.19		25.00	21.00	18.34	10.39	10.39	1.36	1.00		0.44	0.58	2.41	0.02489	0.01340	4.04	532.12
Junction Loss	67.81	23.01	44.80		10.00	18.00	20.37	5.66	5.66	0.49	1.00		0.38	0.52	1.77	0.00906	0.03760	1.18	532.16
Junction Loss	23.01	5.00	18.01		5.00	18.00	20.37	2.83	2.41	0.25	0.85		0.38	0.52	1.77	0.00227	0.03760	0.42	533.17
Junction Loss	5.00	-11.71	16.71		5.00	18.00	20.37	2.83	1.81	0.25	0.64		0.38	0.52	1.77	0.00227	0.03760	0.04	538.26



CURVE	LENGTH	RADIUS	DELTA	CB	CD
C1	163.85	225.00	41°43'28"	N66°47'40"E	160.25
C2	162.14	225.00	41°17'22"	S66°34'37"W	158.68
C3	77.07	50.00	88°19'04"	N43°03'46"E	69.66
C4	47.54	75.00	36°19'01"	S17°03'45"W	46.75

LINE	LENGTH	BEARING
L1	101.59	N87°39'24"E
L2	47.54	N00°04'50"E
L3	24.23	N45°55'56"E
L4	16.57	N06°37'15"E
L5	65.64	N44°33'00"W
L6	27.61	N15°07'00"E
L7	27.60	N09°29'48"W
L8	6.03	N54°31'39"W
L9	41.07	N01°05'48"W
L10	9.15	N35°13'16"E



BENCHMARK:
BRASS CAP MONUMENT NO. 10 SET IN CONCRETE IN THE CENTER OF GRASS MEDIAN IN MASTERS DRIVE BETWEEN NORTH LAKESHORE & SHORES BLVD.
N 7032464.6317, E 2589554.1518
ELEV. = 524.62

REVISED TO CONFORM TO CONSTRUCTION RECORDS.
W. J. [Signature] DATE: 11-05-2002.

STARTING HG = PIPE SOFFIT 527.14

DOUPHRAE & ASSOCIATES, INC.
ENGINEERING • PROJECT MANAGEMENT • SURVEYING
2235 RIDGE RD., # 200 ROCKWALL, TEXAS 75087
PHONE: (972)771-9004 FAX: (972)771-9005

STORM SEWER PLAN & PROFILE
LINE 1
LAKEVIEW SUMMIT, PHASE 2
CITY OF ROCKWALL, ROCKWALL COUNTY, TEXAS

REVISION
- REVISIONS PER CITY COMMENTS 2/5/02
- REVISIONS PER CITY COMMENTS 5/11/02

WLD.
CHECKED
K.E.B.
DRAWN
01/02
DATE
9910-2STM
PROJECT