

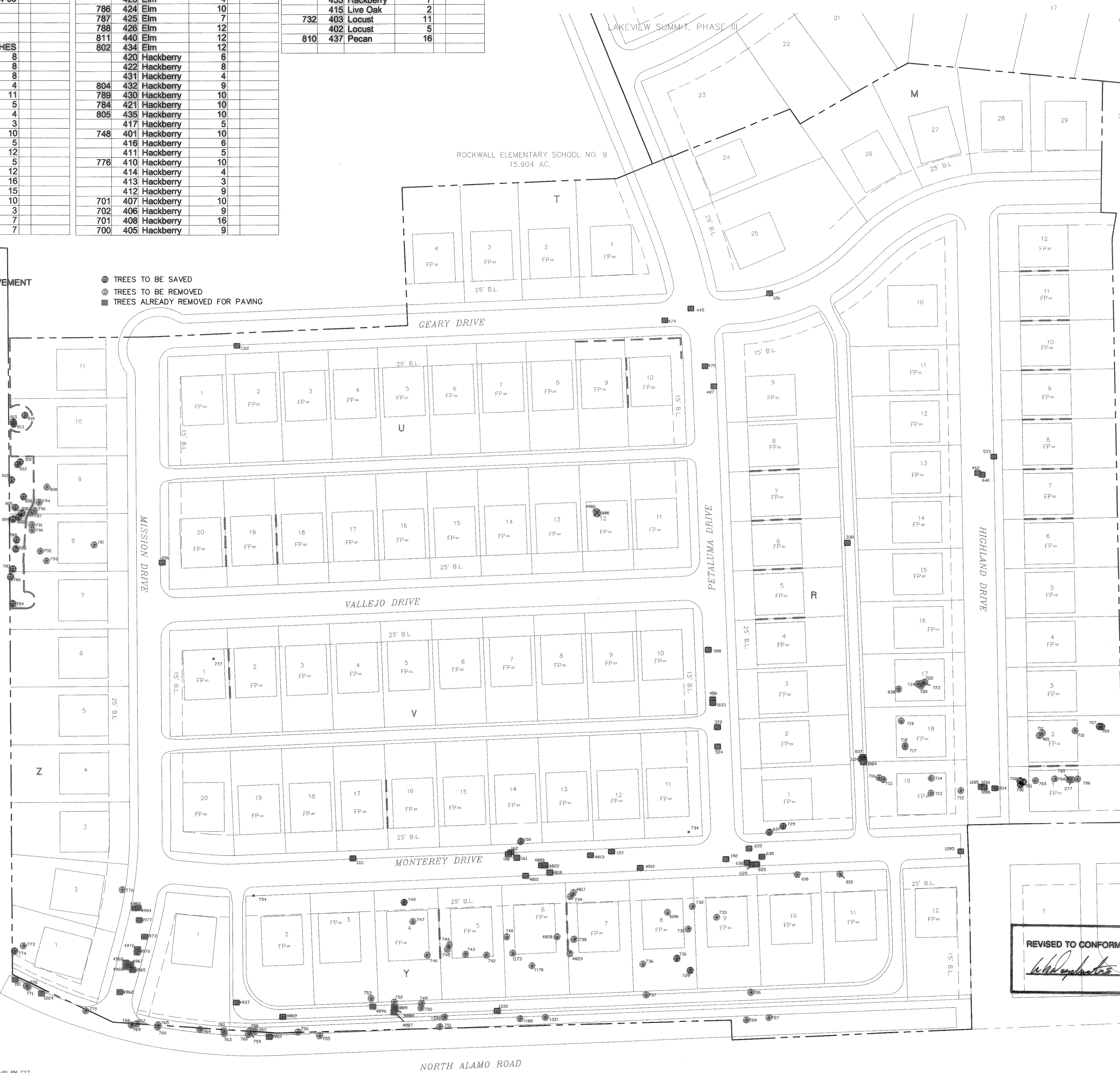
REMAINING TREES AS OF 10-24-03

423 Elm	4	433 Hackberry	7
786 Elm	10	415 Live Oak	2
787 Elm	7	732 403 Locust	11
788 Elm	12	402 Locust	5
811 440 Elm	12	810 437 Pecan	16
802 434 Elm	12		
420 Hackberry	6		
424 Elm	8		
422 Hackberry	6		
431 Hackberry	4		
804 432 Hackberry	9		
789 430 Hackberry	10		
784 421 Hackberry	10		
805 435 Hackberry	10		
417 Hackberry	5		
748 401 Hackberry	10		
416 Hackberry	6		
411 Hackberry	5		
776 410 Hackberry	10		
414 Hackberry	4		
413 Hackberry	3		
412 Hackberry	9		
701 407 Hackberry	10		
702 406 Hackberry	9		
701 408 Hackberry	16		
700 405 Hackberry	9		

LAKEVIEW SUMMIT PHASE TWO
TREE LIST
* TREES TO BE REMOVED FOR PAVEMENT
D - DISEASED TREE

TREE #	TREE TYPE	TREE SIZE (Inches)	NOTE
108	BOIS DE ARC	12	*
113	BOIS DE ARC	12	*
126	BOIS DE ARC	12	*
143	BOIS DE ARC	12	*
151	BOIS DE ARC	12	*
157	BOIS DE ARC	12	*
159	BOIS DE ARC	12	*
161	BOIS DE ARC	12	*
162	BOIS DE ARC	12	*
192	BOIS DE ARC	12	*
277	BOIS DE ARC	20	*
296	BOIS DE ARC	24	*
325	BOIS DE ARC	36	*
333	BOIS DE ARC	36	*
338	BOIS DE ARC	9	*
372	CEDAR	10	*
445	CEDAR	10	*
462	CEDAR	10	*
470	CEDAR	10	*
479	CEDAR	10	*
486	CEDAR	10	*
487	CEDAR	10	*
508	CEDAR	12	*
524	CEDAR	12	*
533	CEDAR	12	*
618	CEDAR	12	*
625	CEDAR	12	*
628	CEDAR	12	*
629	CEDAR	12	*
631	CEDAR	12	*
633	CEDAR	12	*
635	CEDAR	12	*
636	CEDAR	12	*
640	CEDAR	12	*
700	HACKBERRY	9	
701	HACKBERRY	30	
702	HACKBERRY	9	
703	HACKBERRY	30	
704	HACKBERRY	9	
705	HACKBERRY	12	
706	HACKBERRY	16	
707	HACKBERRY	16	D
709	HACKBERRY	16	D
710	HACKBERRY	16	
711	HACKBERRY	9	
712	HACKBERRY	18	
713	HACKBERRY	10	
714	HACKBERRY	9	
715	HACKBERRY	10	
716	BOIS DE ARC	14	D
717	HACKBERRY	9	
718	BOIS DE ARC	12	
719	HACKBERRY	12	
720	HACKBERRY	10	
722	HACKBERRY	10	
723	HACKBERRY	9	
724	HACKBERRY	9	D
725	CEDAR	9	
726	CEDAR	9	
727	HACKBERRY	9	
728	HACKBERRY	9	
729	HACKBERRY	18	
730	HACKBERRY	10	
731	HACKBERRY	28	
732	LOCUST	9	
733	LOCUST	9	
736	LOCUST	14	D
737	HACKBERRY	9	
738	HACKBERRY	12	
739	HACKBERRY	12	
740	BOIS DE ARC	9	
742	HACKBERRY	10	
743	HACKBERRY	10	
744	BOIS DE ARC	9	
745	BOIS DE ARC	9	

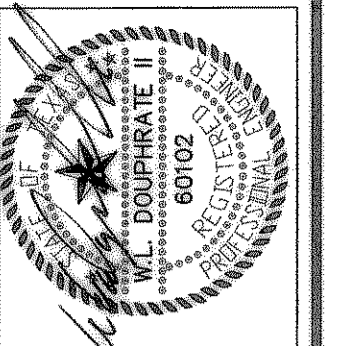
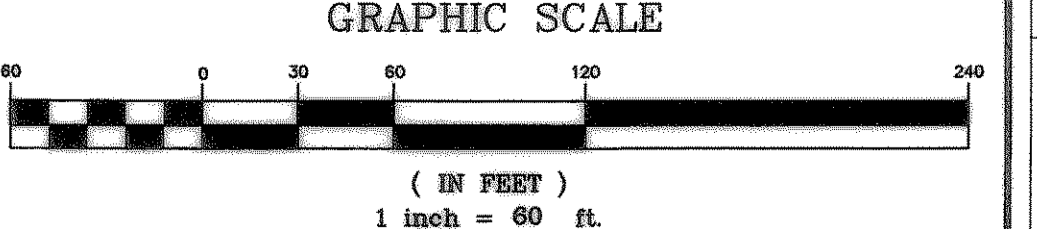
(O) TREES TO BE SAVED
 (X) TREES TO BE REMOVED
 (■) TREES ALREADY REMOVED FOR PAVING



LAKEVIEW SUMMIT PHASE TWO
TREE LIST
* TREES TO BE REMOVED FOR PAVEMENT
D - DISEASED TREE

TREE #	TREE TYPE	TREE SIZE (Inches)	NOTE
746	HACKBERRY	10	
747	HACKBERRY	14	
748	HACKBERRY	9	
749	HACKBERRY	10	
750	BOIS DE ARC	9	
751	BOIS DE ARC	10	
752	BOIS DE ARC	10	
753	BOIS DE ARC	9	
755	CEDAR	10	
756	HACKBERRY	9	
757	BOIS DE ARC	10	
758	BOIS DE ARC	12	
759	BOIS DE ARC	12	
760	BOIS DE ARC	12	
761	HACKBERRY	9	
763	HACKBERRY	10	
764	HACKBERRY	10	
765	BOIS DE ARC	10	
766	BOIS DE ARC	10	
767	BOIS DE ARC	12	
768	HACKBERRY	12	
769	BOIS DE ARC	10	
770	HACKBERRY	9	
771	HACKBERRY	12	
772	HACKBERRY	12	
773	BOIS DE ARC	10	D
774	BOIS DE ARC	9	D
776	HACKBERRY	10	
781	BOIS DE ARC	14	D
784	HACKBERRY	9	
786	HACKBERRY	10	
787	HACKBERRY	9	
788	HACKBERRY	10	
789	HACKBERRY	9	
790	BOIS DE ARC	16	
791	BOIS DE ARC	10	
792	BOIS DE ARC	16	
793	BOIS DE ARC	12	
794	HACKBERRY	12	
796	HACKBERRY	10	
797	HACKBERRY	10	D
800	HACKBERRY	12	D
802	HACKBERRY	10	
804	HACKBERRY	9	
805	HACKBERRY	9	
806	BOIS DE ARC	14	
808	BOIS DE ARC	9	
810	HACKBERRY	14	
811	HACKBERRY	10	
812	HACKBERRY	12	
813	BOIS DE ARC	10	
815	BOIS DE ARC	12	
818	BOIS DE ARC	10	
837	CEDAR	9	*
900	HACKBERRY	24	
936	ELM	11	
1084	HACKBERRY	10	*
1098	BOIS DE ARC	13	
1103	HACKBERRY	10	*
1111	HACKBERRY	10	*
1114	HACKBERRY	10	*
1133	HACKBERRY	10	*
1168	HACKBERRY	12	*
1173	BOIS DE ARC	12	D
1177	HACKBERRY	12	*
1179	CEDAR	12	*
1185	BOIS DE ARC	10	*
1185	BOIS DE ARC	10	*
1205	HACKBERRY	15	*
1206	HACKBERRY	15	*
1214	HACKBERRY	18	*
1216	HACKBERRY	20	*
1224	HACKBERRY	24	*
1285	LOCUST	12	*
1310	MESQUITE	12	*
1329	HACKBERRY	10	*

X
 REVISED TO CONFORM TO CONSTRUCTION RECORDS.
 [Signature]
 DATE: 11/1/03



DOUPHRATE & ASSOCIATES, INC.
 ENGINEERING - PROJECT MANAGEMENT - SURVEYING
 2235 RIDGE RD., # 200 ROCKWALL, TEXAS 75087
 PHONE: (972)771-9004 FAX: (972)771-9005

TREE CONSERVATION PLAN
 LAKEVIEW SUMMIT
 PHASE 2
 CITY OF ROCKWALL, ROCKWALL COUNTY, TEXAS

REVISION
 REVISIONS PER CITY COMMENTS 03/04/02
 REVISIONS - REBAR AFTER SCHOOL GRADING & CONSTRUCTION IN TREE MEASURING BY 05/11/02
 REVISIONS PER CITY COMMENTS 03/15/02
 ADDED 2 NEW TREES #490 & #495 3/15/02
 POST CONST. TREE LIST 10-24-03

W.L.D.
 CHECKED
 K.E.B.
 DRAWN
 01/02
 DATE
 9919-2TREES2
 PROJECT