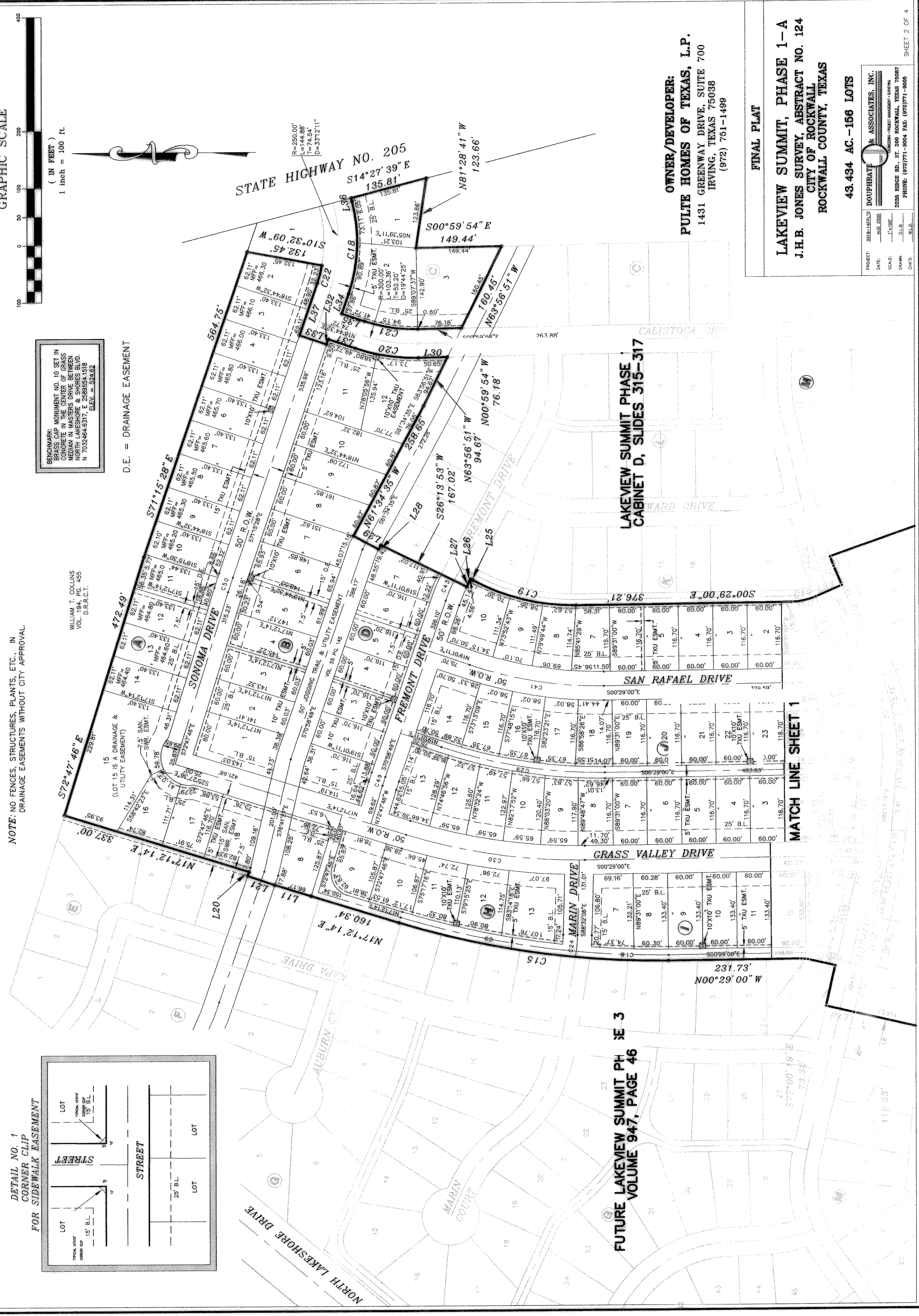
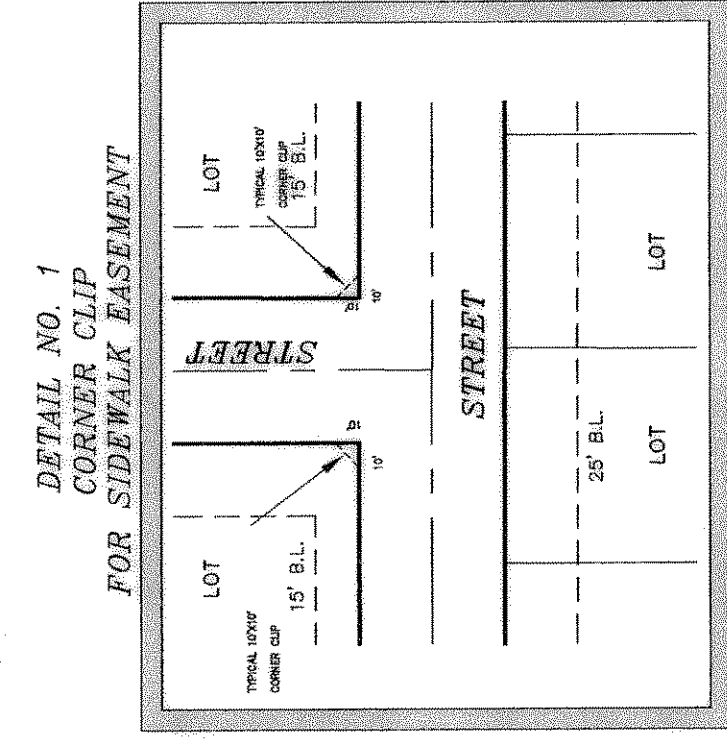


REMARKS:  
 BEARING MONUMENT NO. 10 SET IN CONCRETE IN THE CENTER OF GRASS STRIP IN THE INTERSECTION OF NORTH LAKESHORE DRIVE AND SONOMA DRIVE. N 70°24'44" E 289.854 ± 0.18' DIST. = 326.52'

D.E. = DRAINAGE EASEMENT

NOTE: NO FENCES, STRUCTURES, PLANTS, ETC., IN DRAINAGE EASEMENTS WITHOUT CITY APPROVAL.

WILLIAM T. COLLINS  
 1425 W. 14TH ST.  
 DALLAS, TEXAS 75203



FUTURE LAKEVIEW SUMMIT PH SE 3  
 VOLUME 947, PAGE 46

LAKEVIEW SUMMIT PHASE  
 CABINET D, SLIDES 315-317

OWNER/DEVELOPER:  
**PULTE HOMES OF TEXAS, L.P.**  
 1431 GREENWAY DRIVE, SUITE 700  
 IRVING, TEXAS 75038  
 (972) 751-1499

FINAL PLAT  
**LAKEVIEW SUMMIT, PHASE 1-A**  
 J.H.B. JONES SURVEY, ABSTRACT NO. 124  
 CITY OF ROCKWALL,  
 ROCKWALL COUNTY, TEXAS

43.434 AC. - 156 LOTS

DOUGHRATE & ASSOCIATES, INC.  
 1400 W. 14TH ST., SUITE 100  
 DALLAS, TEXAS 75203  
 PHONE: (972) 771-8064 FAX: (972) 771-8007