

| From          | To         | Length | Box Height | Width | DESIGN Q100 | Pipe Size (in) | CAP Q100 | FULL V | PARTIAL V | PARTIAL FLOW % | FLOW CHT. No. | K <sub>f</sub> | Flow R(ft) | R <sup>2</sup> /3 | Flow Area | FULL S | DESIGN S | HGL Rise | HGL Number |        |
|---------------|------------|--------|------------|-------|-------------|----------------|----------|--------|-----------|----------------|---------------|----------------|------------|-------------------|-----------|--------|----------|----------|------------|--------|
| From SIM -6A  | To SIM -6A |        |            |       |             |                |          |        |           |                |               |                |            |                   |           |        |          |          |            |        |
| 181.64        | 122.4      | 31.94  |            |       | 33.98       | 27             | 26.64    | 8.55   | 8.55      | 1.28           | 1.00          |                | 0.5625     | 0.6814            | 3.9761    | 0.0120 | 0.0074   | 0.7131   | 466.48     |        |
| Junction Loss |            |        |            |       |             |                |          |        |           |                |               |                |            |                   |           |        |          |          |            | 467.19 |
| 215.35        | 181.64     | 61.01  |            |       | 26.48       | 27             | 26.64    | 6.66   | 7.99      | 0.99           | 1.20          |                | 0.5625     | 0.6814            | 3.9761    | 0.0073 | 0.0074   | 0.8242   | 468.02     |        |
| Junction Loss |            |        |            |       |             |                |          |        |           |                |               |                |            |                   |           |        |          |          |            | 468.26 |
| 453.89        | 215.35     | 238.54 |            |       | 18.98       | 18             | 16.00    | 10.74  | 12.24     | 1.19           | 1.14          |                | 0.3750     | 0.5200            | 1.7671    | 0.0326 | 0.0232   | 7.7878   | 474.95     |        |
| Junction Loss |            |        |            |       |             |                |          |        |           |                |               |                |            |                   |           |        |          |          |            | 467.16 |
| 500.00        | 453.89     | 46.11  |            |       | 13.5        | 18             | 34.87    | 7.64   | 7.10      | 0.39           | 0.93          |                | 0.3750     | 0.5200            | 1.7671    | 0.0165 | 0.1102   | 0.8850   | 475.83     |        |
| Junction Loss |            |        |            |       |             |                |          |        |           |                |               |                |            |                   |           |        |          |          |            | 476.60 |
| 513.31        | 500        | 13.31  |            |       | 7.5         | 18             | 34.87    | 4.24   | 3.52      | 0.22           | 0.83          |                | 0.3750     | 0.5200            | 1.7671    | 0.0051 | 0.1102   | 0.6265   | 477.22     |        |
| Junction Loss |            |        |            |       |             |                |          |        |           |                |               |                |            |                   |           |        |          |          |            | 477.29 |



Starting 10' CURB INLET ~ EMERGENCY OVERFLOW  
 PAV. STA. 4+52.57  
 TOP = 488.81  
 FL = 484.81  
 THROAT = 487.89

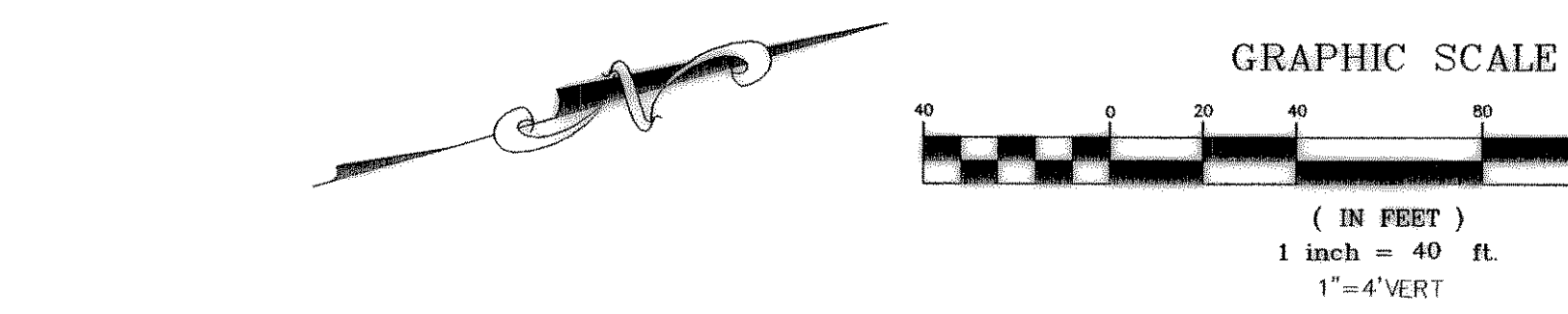
INLET 41 = 15' REC. INLET  
 PAV. STA. 9+02.50 CL  
 TOP = 486.32  
 FL = 482.32  
 Q<sub>100</sub> = 7.5  
 HG @ INLET = 482.91

INLET 21 = 10' CURB INLET  
 PAV. STA. 0+40.84 CL  
 TOP = 489.11  
 FL = 485.11  
 Q<sub>100</sub> = 6.0  
 HG @ INLET = 485.68

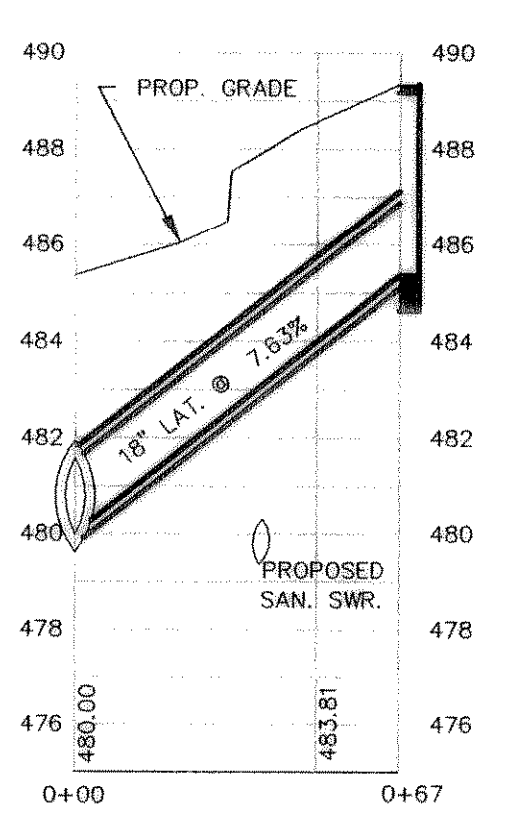
INLET 24 = 4 GRATE COMBO  
 PAV. STA. 5+32.46 CL - 4 GRATE COMBO INLET  
 TOP = 485.97  
 FL = 481.97  
 Q<sub>100</sub> = 5.48  
 HG @ INLET = 482.53

INLET 39 = 15' CURB INLET  
 PAV. STA. 12+20.57 GRASS VALLEY CL  
 TOP = 471.29  
 FL = 467.29  
 Q<sub>100</sub> = 7.5  
 HG @ INLET = 467.71

INLET 40 = 15' REC. INLET  
 PAV. STA. 11+90.20 CL  
 TOP = 472.18  
 FL = 468.18  
 Q<sub>100</sub> = 7.5  
 HG @ INLET = 468.59

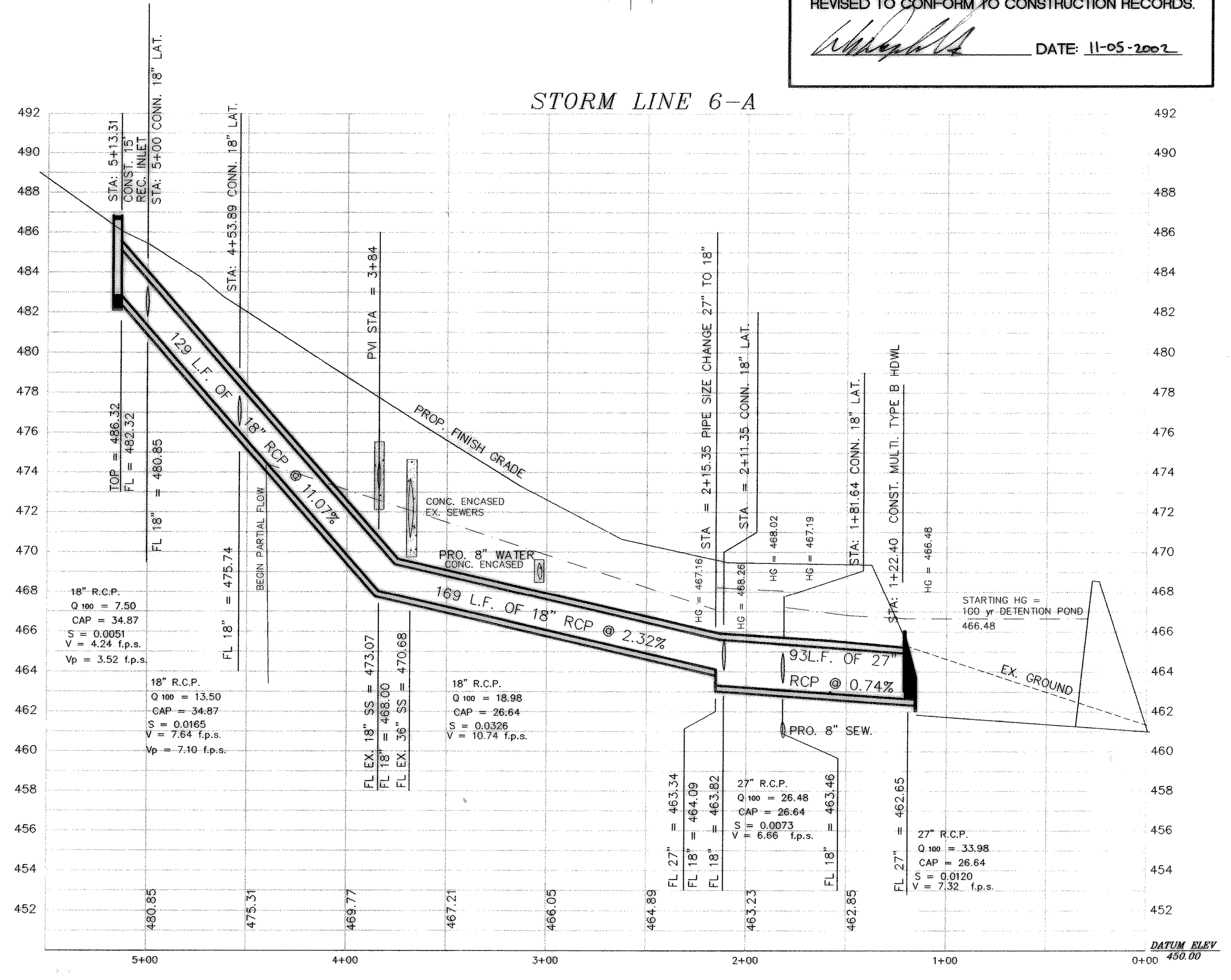


LATERAL H

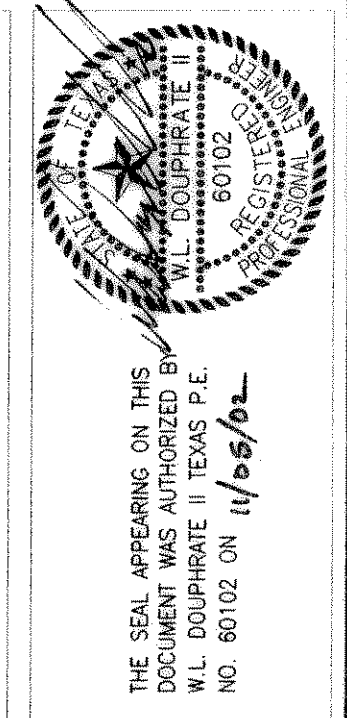


| CURVE | LENGTH | RADIUS | TANGENT | CH BRG      | CH DIST | DELTA     |
|-------|--------|--------|---------|-------------|---------|-----------|
| C1    | 58.27  | 100.00 | 29.99   | N33°53'45"E | 57.45   | 33°23'03" |
| C2    | 48.26  | 75.00  | 25.00   | N88°46'08"E | 47.43   | 36°52'12" |
| C3    | 29.52  | 70.00  | 14.98   | N05°07'20"E | 29.30   | 24°09'48" |

BENCHMARK:  
 BRASS CAP MONUMENT NO. 10 SET IN CONCRETE IN THE CENTER OF GRASS MEDIAN IN MASTERS DRIVE BETWEEN NORTH LAKESHORE & SHORES BLVD.  
 N 7032464.6317, E 2589554.1518  
 ELEV = 524.62



REVISED TO CONFORM TO CONSTRUCTION RECORDS.  
 DATE: 11-05-2002



DOUPHRA  
 & ASSOCIATES, INC.  
 ENGINEERING - PROJECT MANAGEMENT - SURVEYING  
 2235 RIDGE RD., # 200 ROCKWALL, TEXAS 75087  
 PHONE: (972)771-9004 FAX: (972)771-9005

STORM SEWER PLAN & PROFILE  
 LINE 6-A  
 LAKEVIEW SUMMIT PHASE 1-A  
 CITY OF ROCKWALL, COUNTY OF ROCKWALL

REVISION  
 W.L.D.  
 CHECKED  
 K.E.B.  
 DRAWN  
 8/14/00  
 DATE  
 9919-1ASTM3-A  
 PROJECT