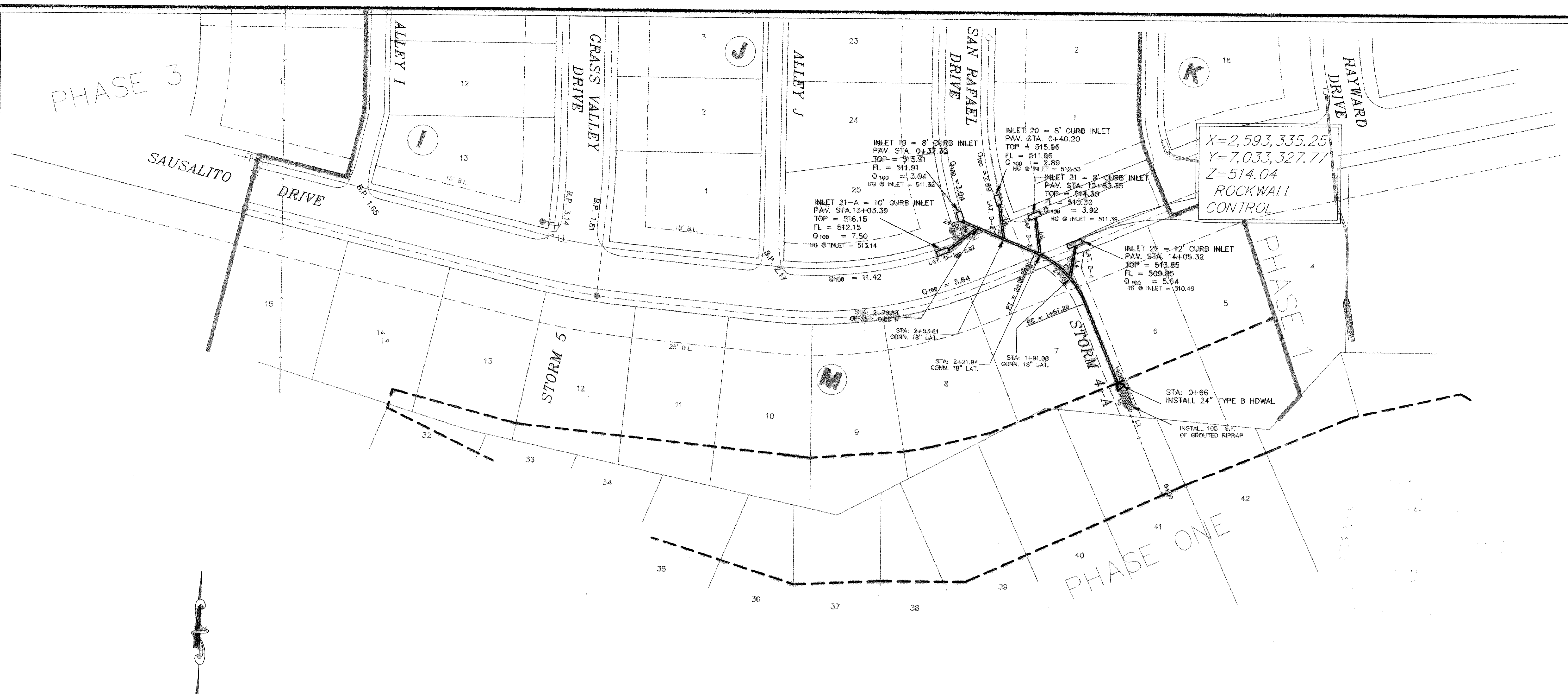
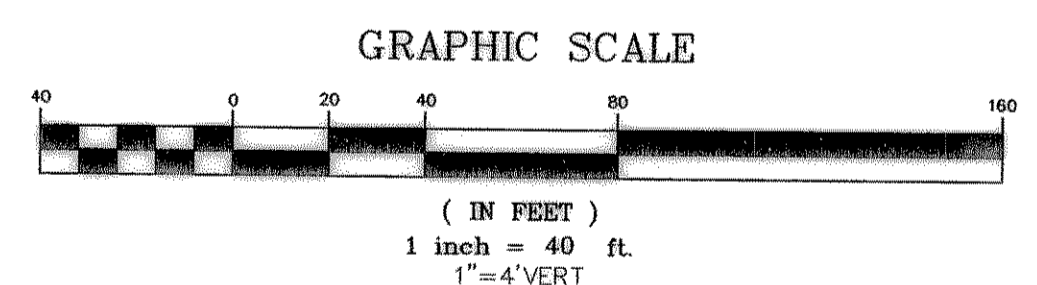


PHASE 3



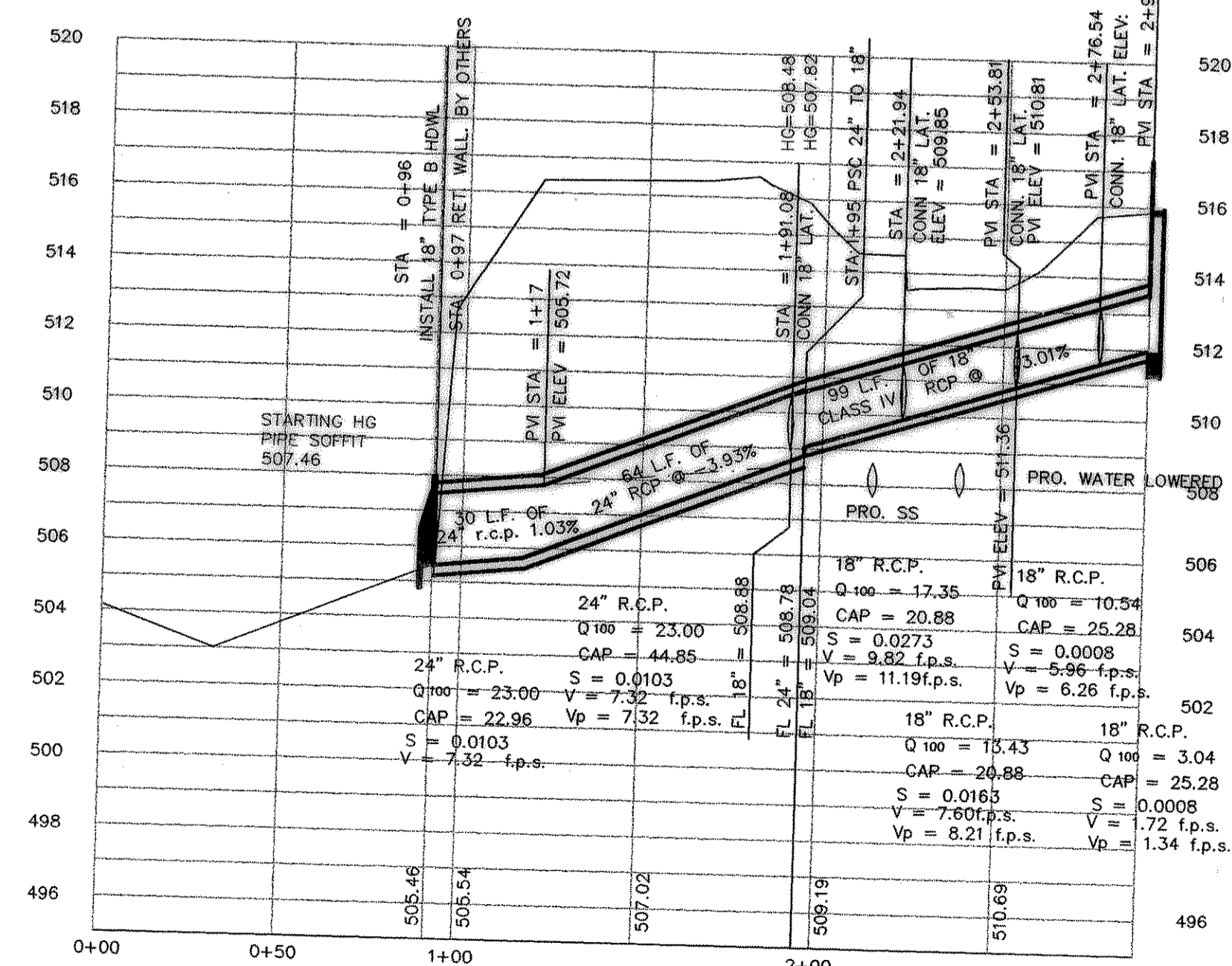
X=2,593,335.25
Y=7,033,327.77
Z=514.04
ROCKWALL CONTROL



RETAINING WALL - - - - -

From	To	Length	Box Height	Width	DESIGN Q100	Pipe Size (in)	CAP Q100	FULL V	PARTIAL V	PARTIAL FLOW %	FLOW CHT. No.	Kj	Flow R(ft)	Flow R ² /S	Flow Area	FULL S	DESIGN S	HGL Rise	HGL Number	
STM -4A																				
	117.00	96	21		23	24	22.96	7.32	8.42	1.00	1.15		0.5000	0.6300	3.1416	0.0103	0.0103	0.2171	507.68	
Junction Loss																				0.0000
	195.00	117	78		23	24	44.85	7.32	7.32	0.51	1.00	1.0000	0.5000	0.6300	3.1416	0.0103	0.0393	0.8063	508.48	
Junction Loss																				0.8063
	221.94	195	26.94		17.35	18	18.22	9.82	11.19	0.95	1.14	1.0000	0.3750	0.5200	1.7671	0.0273	0.0301	-0.6645	507.82	
Junction Loss																				0.7349
	253.81	221.94	31.87		13.43	18	18.22	7.60	8.21	0.74	1.08	1.0000	0.3750	0.5200	1.7671	0.0163	0.0301	0.6000	508.55	
Junction Loss																				0.5209
	276.54	253.81	22.73		10.54	18	18.22	5.96	6.26	0.58	1.05	1.0000	0.3750	0.5200	1.7671	0.0101	0.0301	0.8969	510.57	
Junction Loss																				0.2288
	290.38	276.54	13.84		3.04	18	18.22	1.72	1.34	0.17	0.78	1.0000	0.3750	0.5200	1.7671	0.0008	0.0301	0.5064	511.31	
Junction Loss																				0.0116

STORM LINE 4-A

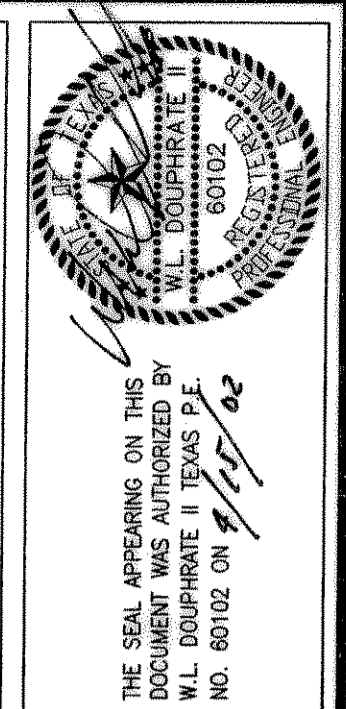


BENCHMARK:
BRASS CAP MONUMENT NO. 10 SET IN CONCRETE IN THE CENTER OF GRASS MEDIAN IN MASTERS DRIVE BETWEEN NORTH LAKESHORE & SHORES BLVD. N 7032464.6317, E 2589554.1518
ELEV. = 524.62

LINE	LENGTH	BEARING
L1	64.11'	N68°32'07"W
L2	167.20'	N23°24'06"W
L3	29.40'	N61°27'53"E
L4	26.21'	S08°17'31"W
L5	29.76'	S08°32'07"E
L6	27.86'	S08°32'07"E

CURVE	LENGTH	RADIUS	TANGENT	CH BRG	CH DIST	DELTA
C1	59.08'	75.00'	31.17'	N108°02'00"W	57.56'	45°08'01"

RECORD DRAWINGS:
THE INTENT OF THE OWNER AND ENGINEER WAS TO CONSTRUCT THESE FACILITIES ACCORDING TO THESE PLANS AS APPROVED BY THE CITY OF ROCKWALL. THE LINES AND GRADES WERE SET ON THE GROUND FOR CONSTRUCTION ACCORDING TO SAID PLANS. THE CITY OF ROCKWALL INSPECTED THE CONSTRUCTION. THE OWNER NOR ENGINEER DID NOT VERIFY LINES OR GRADES AFTER CONSTRUCTION. WE ARE NOT AWARE OF ANY CHANGES OR REVISIONS TO THESE PLANS DURING CONSTRUCTION EXCEPT AS NOTED 4/18/02.



DOUPHRATE & ASSOCIATES, INC.
ENGINEERING - PROJECT MANAGEMENT - SURVEYING
2235 RIDGE RD., # 200 ROCKWALL, TEXAS 75087
PHONE: (972)771-9004 FAX: (972)771-9005

STORM SEWER PLAN & PROFILE
STORM SEWER LINE 4-A
LAKEVIEW SUMMIT PHASE 1A
CITY OF ROCKWALL, COUNTY OF ROCKWALL

REVISION	DATE	PROJECT
WLD.	8/21/00	9919-1astm2A
KEB.		
DRAWN		
DATE		
PROJECT		