

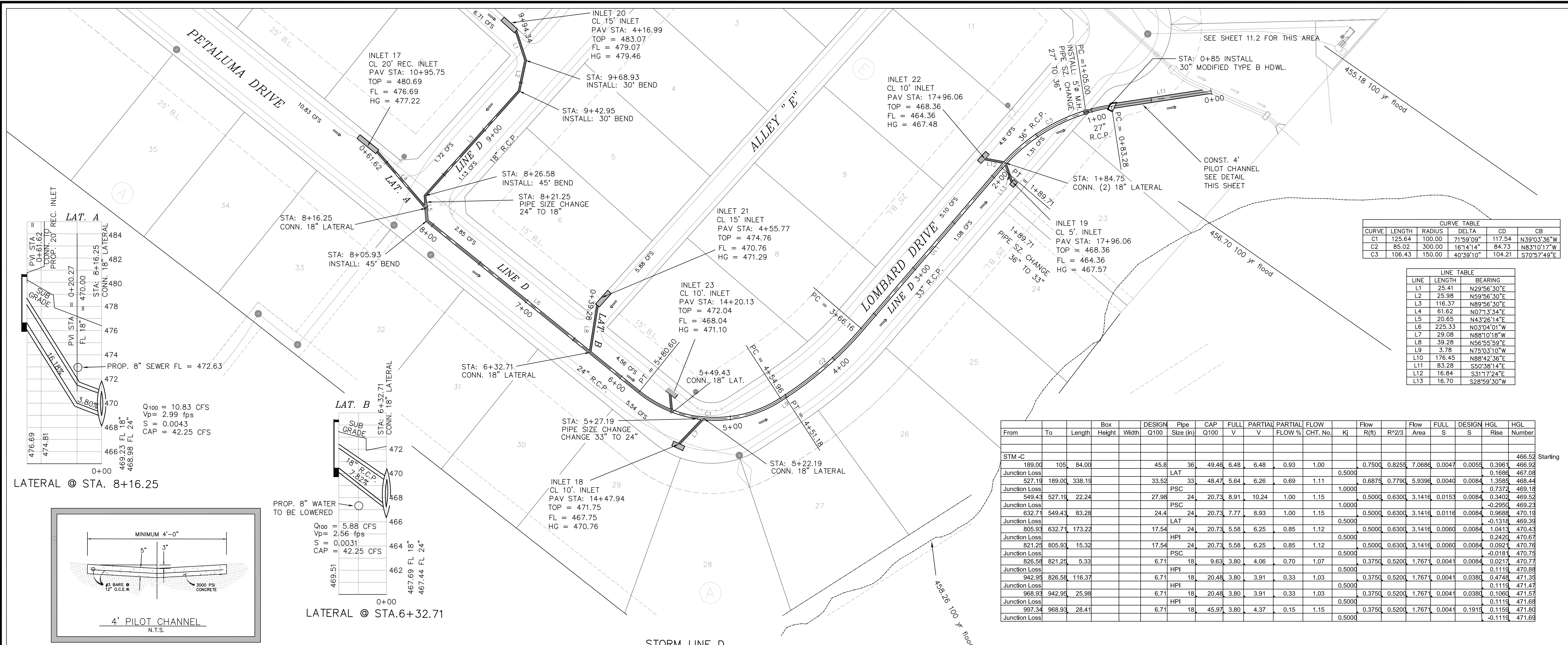


THE SEAL APPEARING ON THIS PLAN IS THE PROPERTY OF W.L. DOUPHRATE, ENGINEER, NO. 6002, F-886, ON DATE: OCT. 3, 2014.

**DOUPHRATE & ASSOCIATES, INC.**  
 ENGINEERING - PROJECT MANAGEMENT - SURVEYING  
 2235 RIDGE RD., # 200 ROCKWALL, TEXAS 75087  
 PHONE: (972)771-9004 FAX: (972)771-9005

**STORM SEWER PLAN AND PROFILE**  
 LINE D, LAT. A & LAT. B  
 LAKEVIEW SUMMIT, PHASE IV  
 CITY OF ROCKWALL, ROCKWALL COUNTY, TEXAS

REVISION
W.L.D. CHECKED
K.E.B. DRAWN
10/14 DATE
9919-4STM4 PROJECT
113 OF



CURVE	LENGTH	RADIUS	DELTA	CD	CB
C1	125.64	100.00	71°59'09"	117.54	N39°03'36"W
C2	85.02	300.00	16°14'14"	84.73	N83°10'17"W
C3	106.43	150.00	40°59'10"	104.21	S70°57'49"E

LINE	LENGTH	BEARING
L1	25.41	N29°56'30"E
L2	25.98	N59°56'30"E
L3	116.37	N89°56'30"E
L4	61.62	N07°13'34"E
L5	20.65	N43°26'14"E
L6	225.33	N03°04'01"W
L7	29.08	N88°10'18"W
L8	39.28	N56°55'59"E
L9	3.78	N75°03'10"W
L10	176.45	N88°42'36"E
L11	83.28	S50°38'14"E
L12	16.84	S31°17'24"E
L13	16.70	S28°59'30"W

From	To	Length	Box Height	Width	DESIGN Q100	Pipe Size (in)	CAP Q100	FULL V	PARTIAL V	FLOW FLOW %	CHT. No.	Kj	Flow R(ft)	R*2/3	Flow Area	FULL S	DESIGN HGL	HGL Rise	Number
STM-C																			Starting
Junction Loss	189.00	105	84.00		45.8	36	49.48	6.48	6.48	0.93	1.00	0.5000	0.7500	0.8255	7.0686	0.0047	0.0055	0.3961	468.52
Junction Loss	527.19	189.00	338.19		33.52	33	48.47	5.64	6.26	0.69	1.11	1.0000	0.6875	0.7790	5.9396	0.0040	0.0084	1.3585	468.44
Junction Loss	549.43	527.19	22.24		27.98	24	20.73	8.91	10.24	1.00	1.15	1.0000	0.5000	0.6300	3.1416	0.0153	0.0084	0.3402	469.52
Junction Loss	632.71	549.43	83.28		24.4	24	20.73	7.77	8.93	1.00	1.15	1.0000	0.5000	0.6300	3.1416	0.0116	0.0084	0.9688	470.19
Junction Loss	805.93	632.71	173.22		17.54	24	20.73	5.58	6.25	0.85	1.12	0.5000	0.5000	0.6300	3.1416	0.0060	0.0084	1.0413	470.43
Junction Loss	821.25	805.93	15.32		17.54	24	20.73	5.58	6.25	0.85	1.12	0.5000	0.5000	0.6300	3.1416	0.0060	0.0084	0.2420	470.67
Junction Loss	826.58	821.25	5.33		17.54	24	20.73	5.58	6.25	0.85	1.12	0.5000	0.5000	0.6300	3.1416	0.0060	0.0084	-0.0181	470.75
Junction Loss	942.95	826.58	116.37		6.71	18	20.48	3.80	4.06	0.70	1.07	0.5000	0.3750	0.5200	1.7671	0.0041	0.0084	0.0217	470.77
Junction Loss	968.93	942.95	25.98		6.71	18	20.48	3.80	3.91	0.33	1.03	0.5000	0.3750	0.5200	1.7671	0.0041	0.0380	0.4748	471.35
Junction Loss	968.93	968.93	28.41		6.71	18	45.97	3.80	4.37	0.15	1.15	0.5000	0.3750	0.5200	1.7671	0.0041	0.1915	0.1155	471.80
Junction Loss																		-0.1119	471.68

