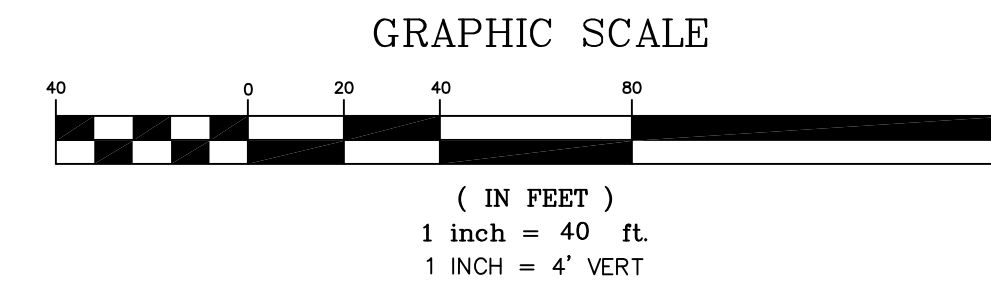
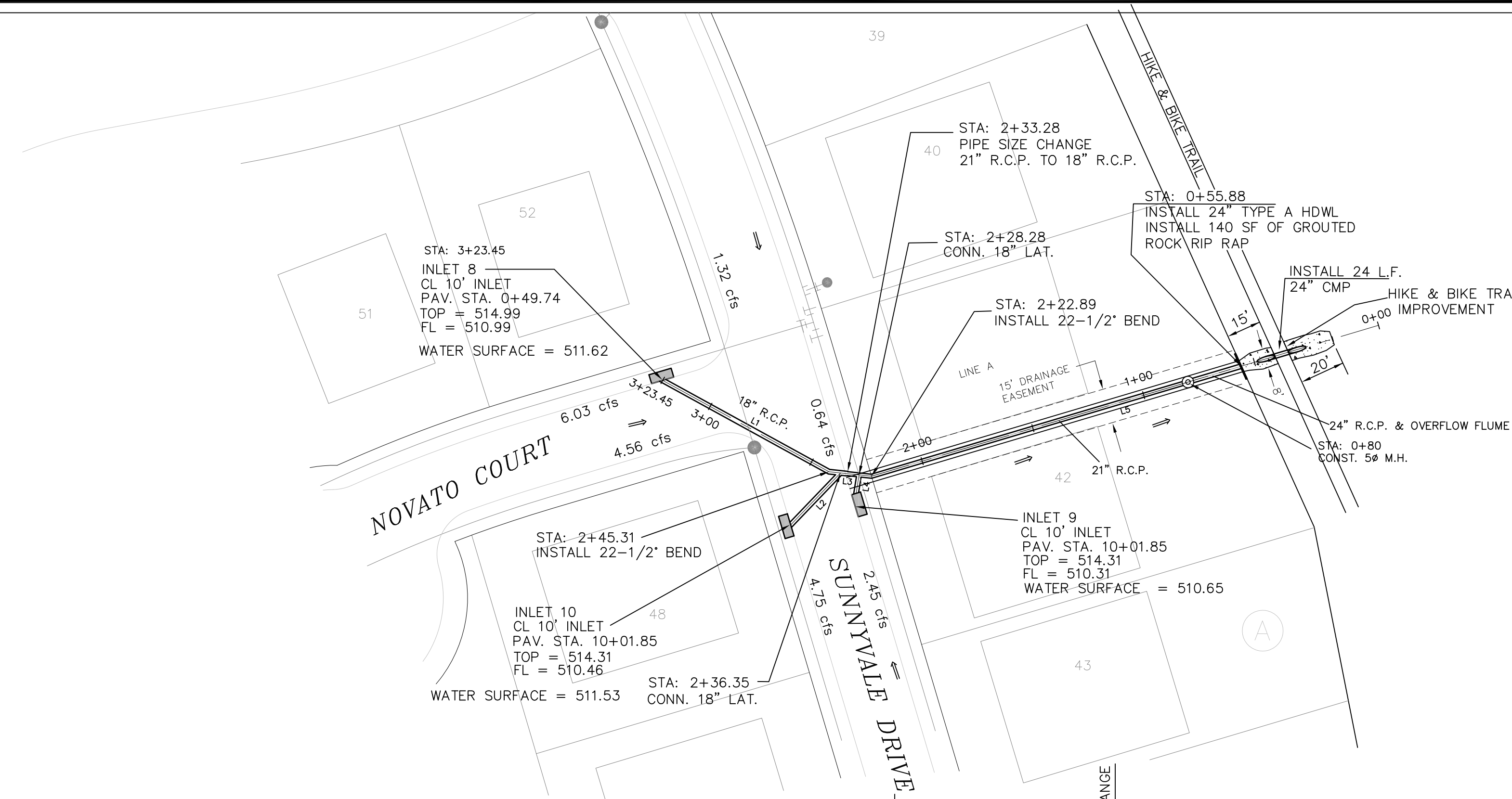
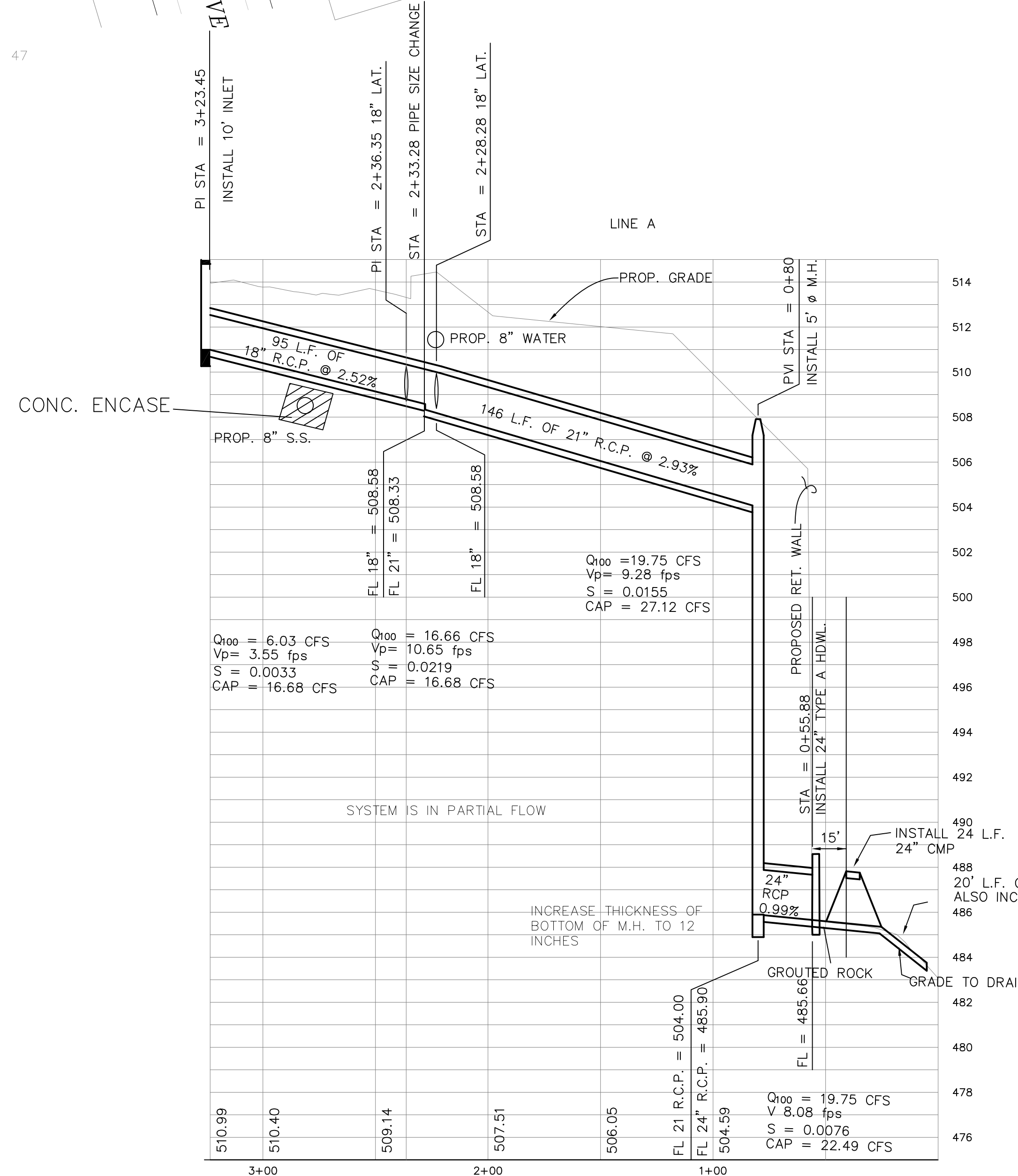


From	To	Length	Box Height	Box Width	DESIGN Q100	Pipe Size (in)	CAP Q100	FULL V	PARTIAL V	PARTIAL FLOW %	FLOW CHT. No.	Kj	Flow R(ft)	R ² /3	Flow Area	FULL S	DESIGN S	HGL Rise	HGL Number	
STM-C																				505.75
	222.85	80	142.89		19.75	21	27.12	8.21	9.28	0.73	1.13		0.4375	0.5763	2.4053	0.0155	0.0293	2.2200	507.97	
Junction Loss	222.85	10.39			19.75	HP1	21	27.12	8.21	9.28	0.73	1.13	0.4375	0.5763	2.4053	0.0155	0.0293	0.5759	508.55	
	233.24				19.75	PSC	21	27.12	8.21	9.28	0.73	1.13	0.4375	0.5763	2.4053	0.0155	0.0293	0.1614	508.71	
Junction Loss	233.24	3.07			16.66	18	16.66	9.43	9.80	0.92	1.04	1.0000	0.3750	0.5200	1.7671	0.0252	0.0252	0.3332	509.04	
Junction Loss	236.35				16.66	18	16.66	9.43	9.80	0.92	1.04	1.0000	0.3750	0.5200	1.7671	0.0252	0.0252	0.0772	509.12	
	245.31				6.03	18	16.66	3.41	3.55	0.92	1.04	0.4500	0.3750	0.5200	1.7671	0.0033	0.0252	-1.1993	507.92	
Junction Loss	245.31	8.95			6.03	HP1	18	16.66	3.41	3.55	0.92	1.04	0.3750	0.5200	1.7671	0.0033	0.0252	0.0994	508.05	
Junction Loss	323.45	78.14			6.03	18	16.66	3.41	3.55	0.92	1.04	0.4500	0.3750	0.5200	1.7671	0.0033	0.0252	0.2575	508.30	

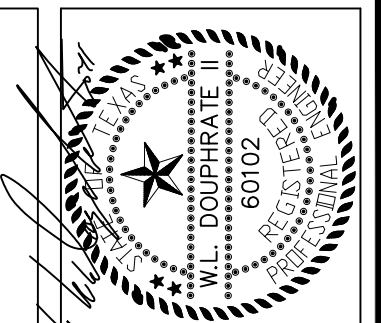
Starting= Pipe Soffit



LINE	LENGTH	BEARING
L1	82.10	N28°30'59"E
L2	31.13	N46°28'25"W
L3	18.45	S05°50'08"W
L4	8.07	N81°09'28"W
L5	228.89	S16°50'44"E



BENCHMARKS:
 BRASS CAP MONUMENT NO. 10 SET IN CONCRETE IN THE CENTER OF GRASS MEDIAN IN MASTERS DRIVE BETWEEN NORTH LAKESHORE & SHORES BLVD.
 N 7032464.6317, E 2589554.1518
 ELEV. = 524.62



THE SEAL APPEARING ON THIS DOCUMENT WAS AUTHORIZED BY W.L. DOUPHRATE II, TEXAS P.E. NO. 60102, EXPIRES ON 09/30/24.

DOUPHRATE & ASSOCIATES, INC.
 ENGINEERING • PROJECT MANAGEMENT • SURVEYING
 2235 RIDGE RD., # 200 ROCKWALL, TEXAS 75087
 PHONE: (972)771-9004 FAX: (972)771-9005

STORM SEWER PLAN & PROFILE
 LINE A
 LAKEVIEW SUMMIT, PHASE IV
 CITY OF ROCKWALL, ROCKWALL COUNTY, TEXAS

8-16-16 ADDED PIPE ENDS
 8-5-16 ADDED 6" 24" RCP AT TRAIL CROSSING
 REVISION

W.L.D.
 CHECKED

KEB.
 DRAWN

10/14
 DATE

9919-4STM-1
 PROJECT

110
 OF