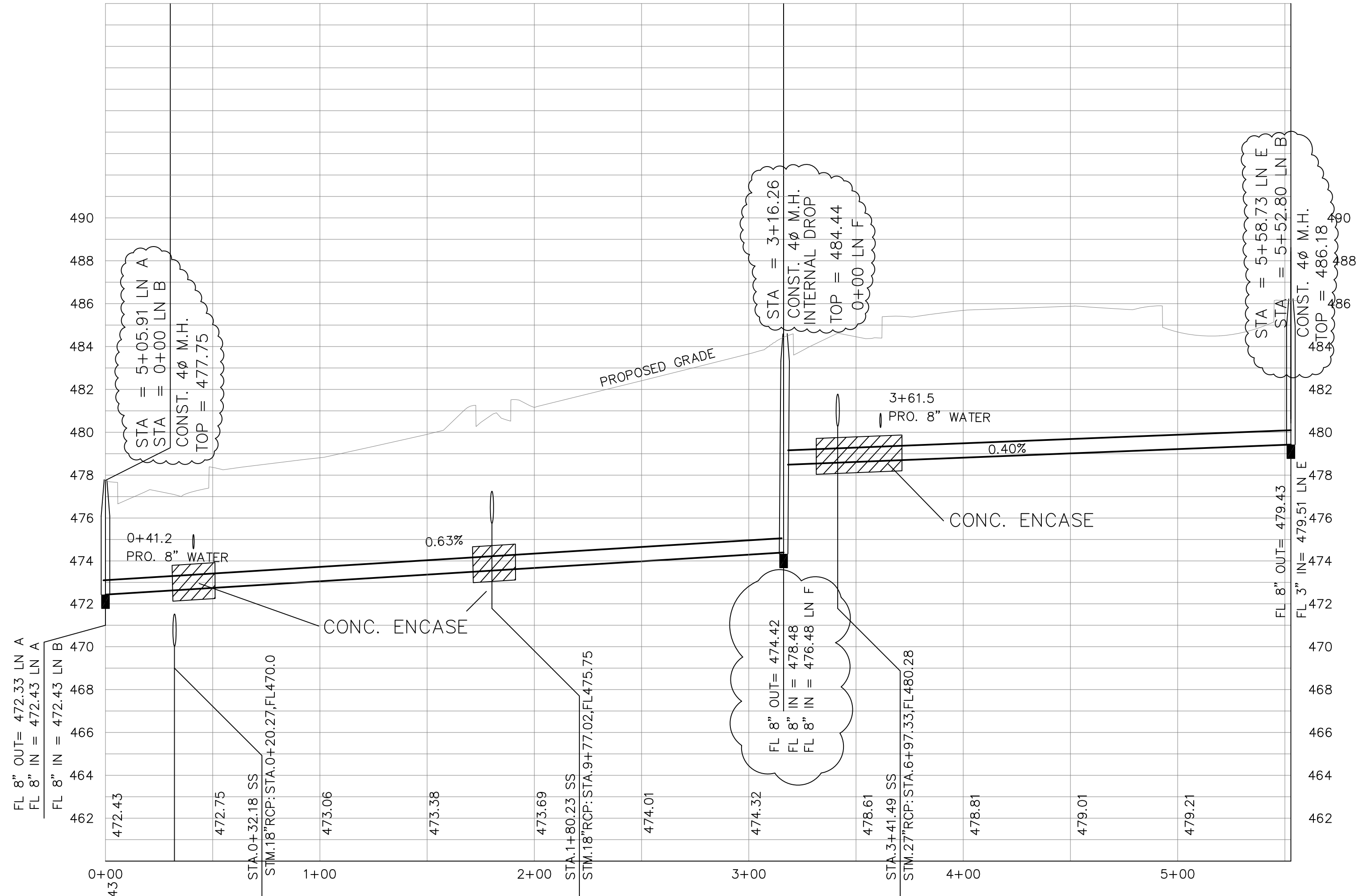
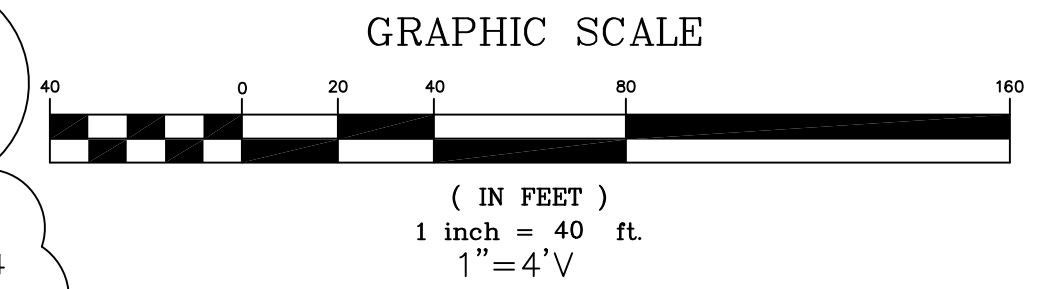
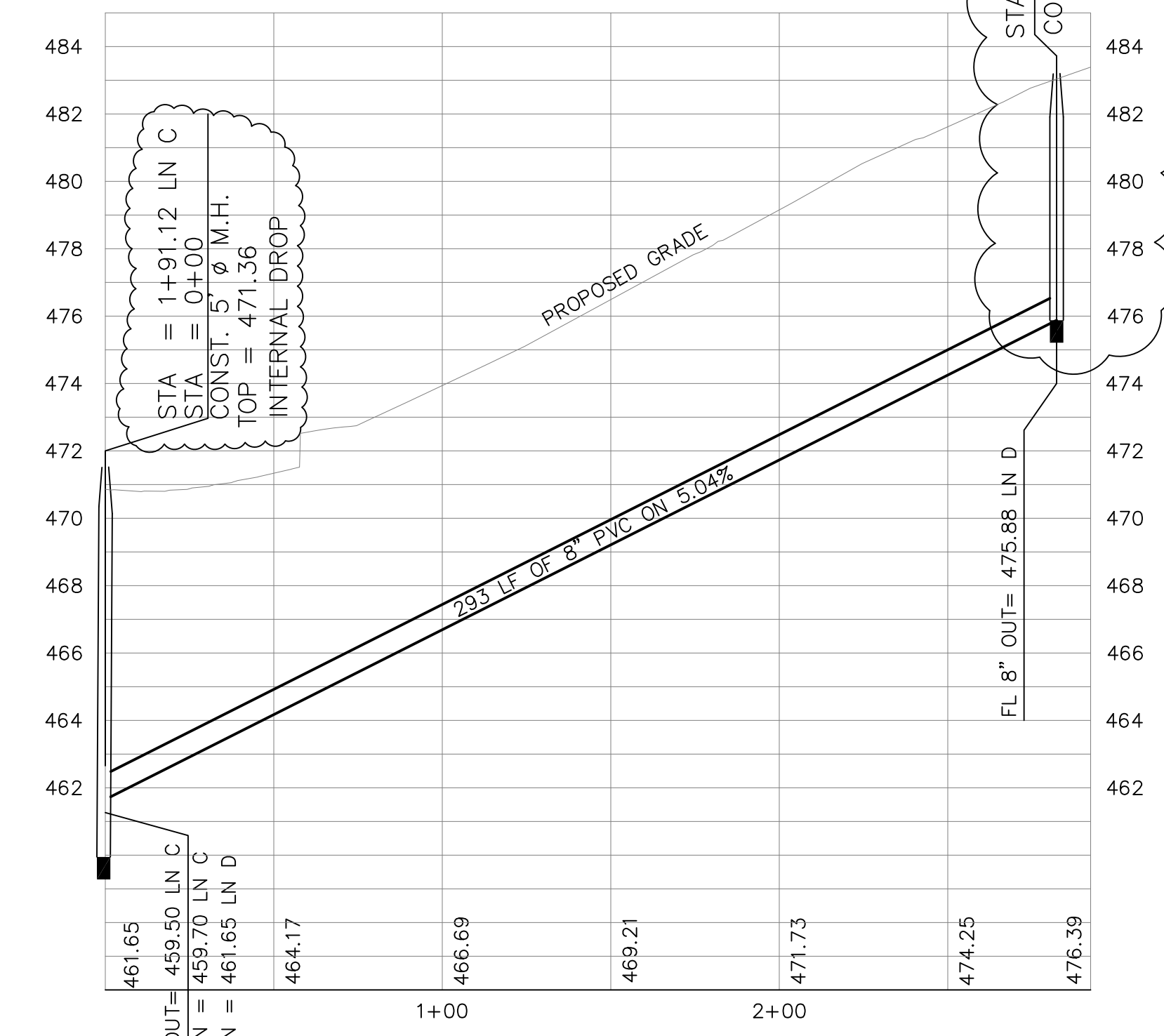


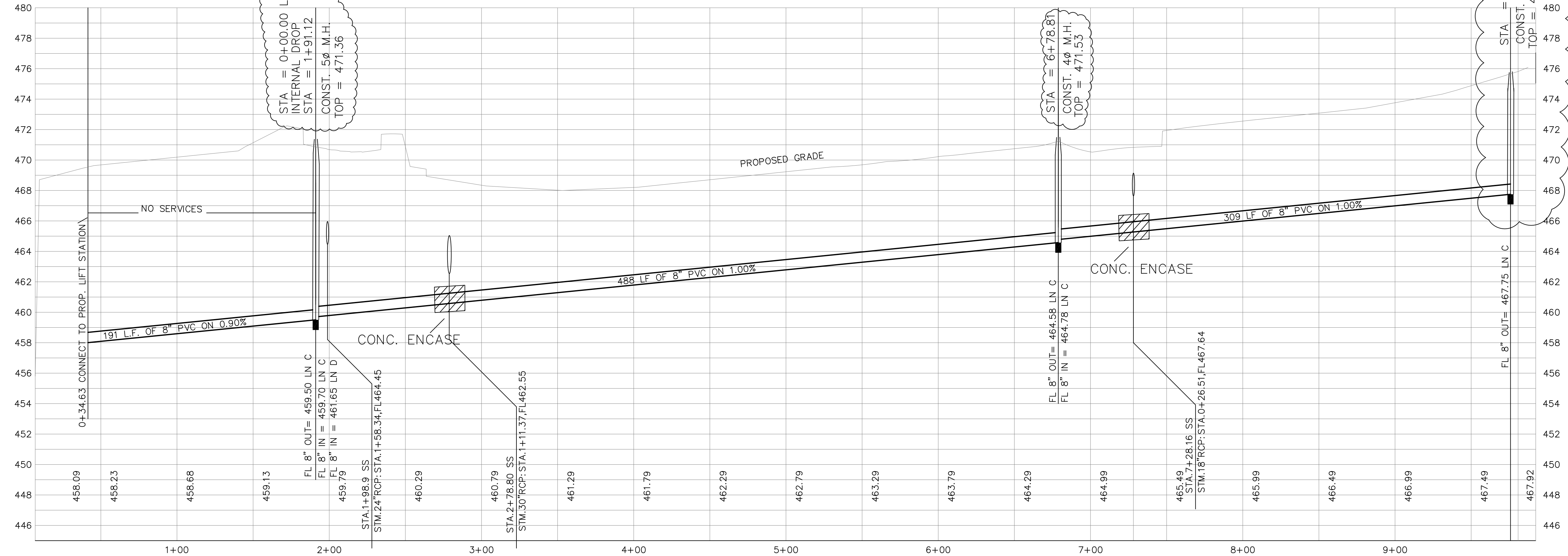
SANITARY SEWER LINE B



SANITARY SEWER LINE D



SANITARY SEWER LINE C



LEGEND



NOTE:
PROPOSED GRADE LINE AT PAVEMENT CROSSINGS DEPICTS PAVING SUBGRADE.

- REVISIONS:
- 9-22-15 SHORTENED LINE D 10.10' CHANGED MH STA 2+92.38 TO 2+82.28
 - 9-23-15 SHORTENED LINE C 16.54' CHANGED MH STA 9+92.39 TO 9+75.82
 - 9-23-15 MH STA 9+75.82 LINE C ADJUSTED RIM TO 476.00
 - 9-24-15 REVISED TOP ELEVATIONS
 - 10-28-15 LOWERED LINE F FL 2 FT AT LINE B MH STA 3+16.26 TO 476.48'

BENCHMARKS:
BRASS CAP MONUMENT NO. 10 SET IN CONCRETE IN THE CENTER OF GRASS MEDIAN IN MASTERS DRIVE BETWEEN NORTH LAKESHORE & SHORES BLVD.
N 7032464.6317, E 2589554.1518
ELEV. = 524.62



THE SEAL APPEARING ON THIS PLAN IS THE PROPERTY OF W.L. DOUPHRATE II, TEXAS P.E. NO. 60102, F-586, ON DATE: OCT. 3, 2014

DOUPHRATE & ASSOCIATES, INC.
ENGINEERING • PROJECT MANAGEMENT • SURVEYING
2235 RIDGE RD., # 200 ROCKWALL, TEXAS 75087
PHONE: (972)771-9004 FAX: (972)771-9005

SANITARY SEWER PROFILE
LINE B - LINE C - LINE D
LAKEVIEW SUMMIT, PHASE 4
CITY OF ROCKWALL, ROCKWALL COUNTY, TEXAS

REVISION
WLD.
CHECKED
KEB.
DRAWN
DATE
9919-4SS2
PROJECT
102
OF