

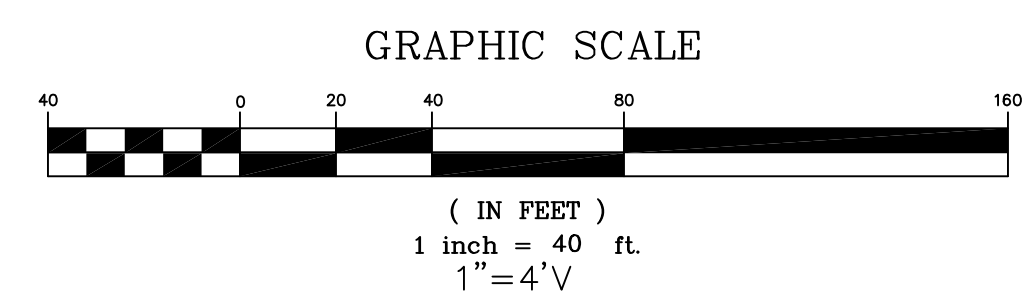
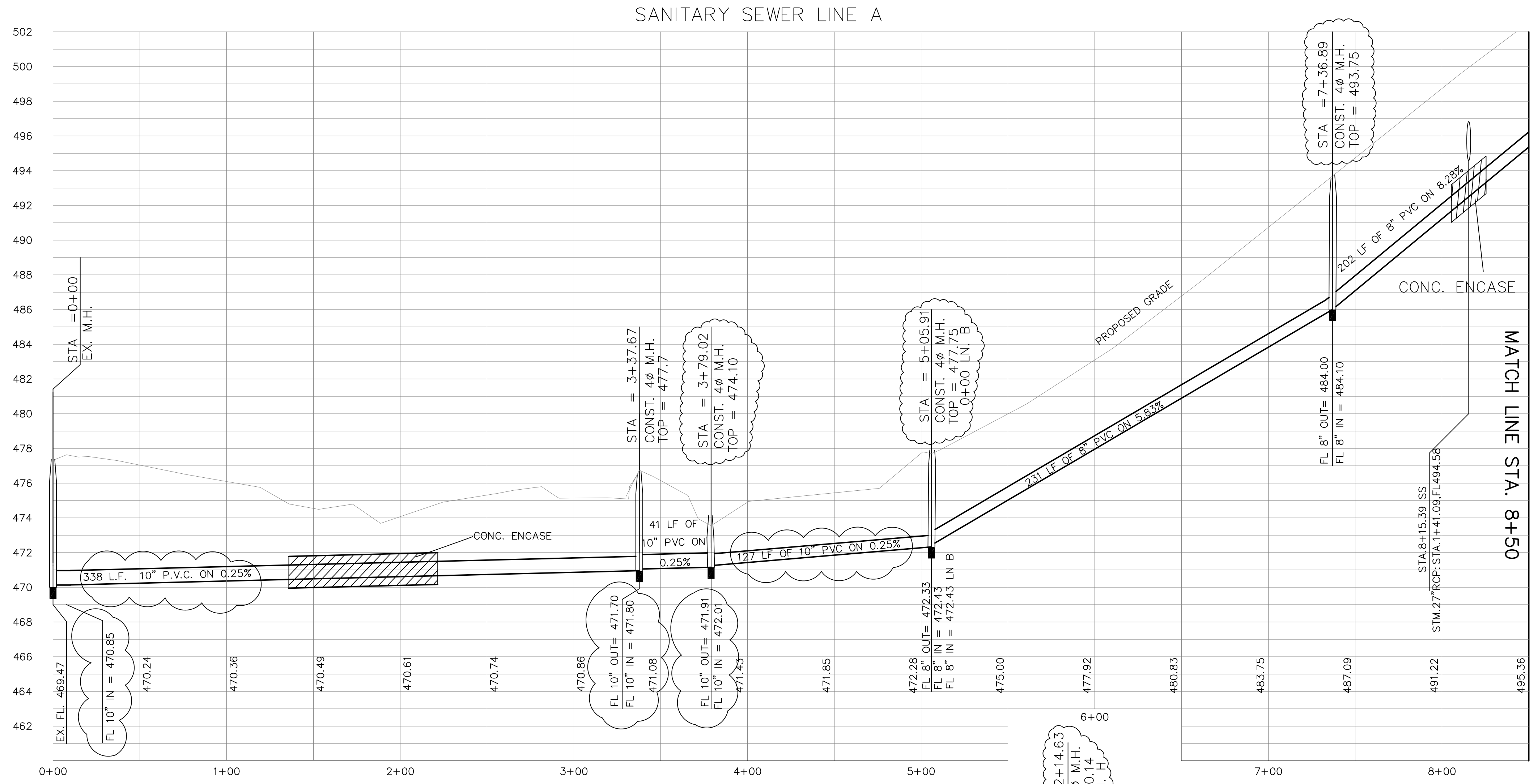
THE SEAL APPEARING ON THIS DOCUMENT WAS AUTHORIZED BY W.L. DOUPHRATE II TEXAS P.E. NO. 80102, F-886, ON DATE: 06/03/2014

DOUPHRATE & ASSOCIATES, INC.
 ENGINEERING - PROJECT MANAGEMENT - SURVEYING
 22235 RIDGE RD., # 200 ROCKWALL, TEXAS 75087
 PHONE: (972)771-9004 FAX: (972)771-9005

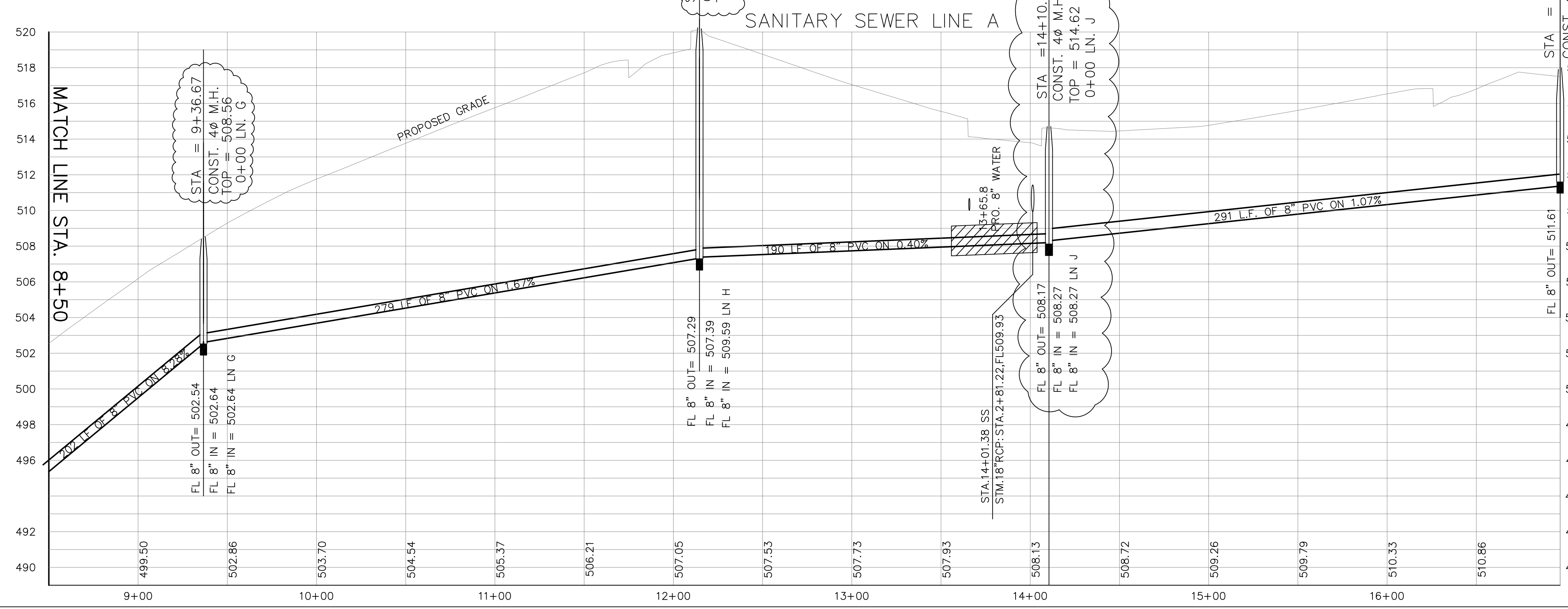
SANITARY SEWER PROFILE
 LINE A STA: 0+00 TO 16+96.96
 LAKEVIEW SUMMIT, PHASE 4
 CITY OF ROCKWALL, ROCKWALL COUNTY, TEXAS

9-17-15 CHANGED LINE J FLOWLINE IN TO LINE A AT STA 14+10.51 TO 508.27' & CHANGED DROP MH AT STA 14+10.51 TO STD 4' DIA. MH
 9-24-15 REVISED TOP ELEVATIONS

REVISION
W.L.D. CHECKED
K.E.B. DRAWN
10/14 DATE
9919-4SS1 PROJECT
101 OF



LEGEND



NOTE:
 PROPOSED GRADE LINE AT PAVEMENT CROSSINGS DEPICTS PAVING SUBGRADE.

DELETED MANHOLE AT STA 0+7.79
 CHANGED PIPE SIZE FROM 8" TO 10"
 BETWEEN STA 3+79.02 & STA 5+05.91
 AND CHANGED GRADE TO .25%
 REVISED FL IN AT STA 3+79.02 TO 472.01
 REVISED FL OUT AT STA 3+79.02 TO 471.91
 REVISED FL IN AT STA 3+37.67 TO 471.80
 REVISED FL OUT AT STA 3+37.67 TO 471.70
 REVISED FL IN AT STA 0+00 TO 470.85

BENCHMARKS:
 BRASS CAP MONUMENT NO. 10 SET IN CONCRETE IN THE CENTER OF GRASS MEDIAN IN MASTERS DRIVE BETWEEN NORTH LAKESHORE & SHORES BLVD.
 N 7032464.6317, E 2589554.1518
 ELEV. = 524.62