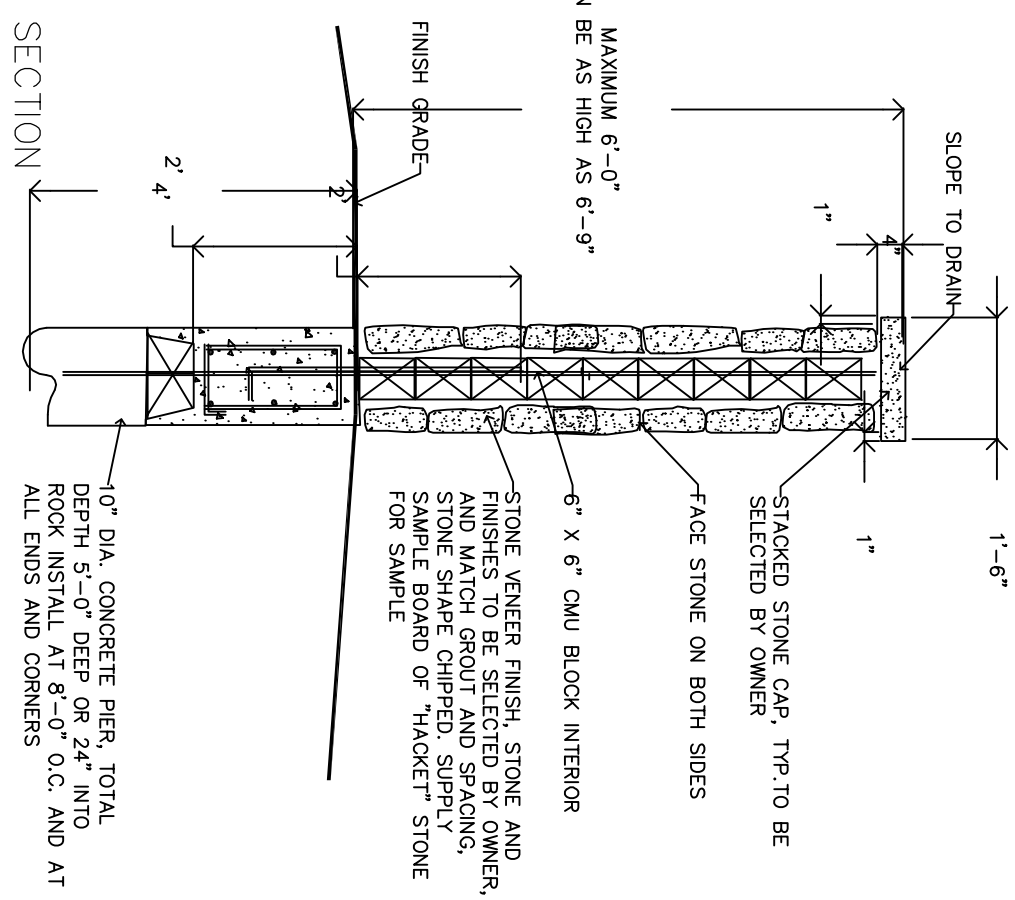
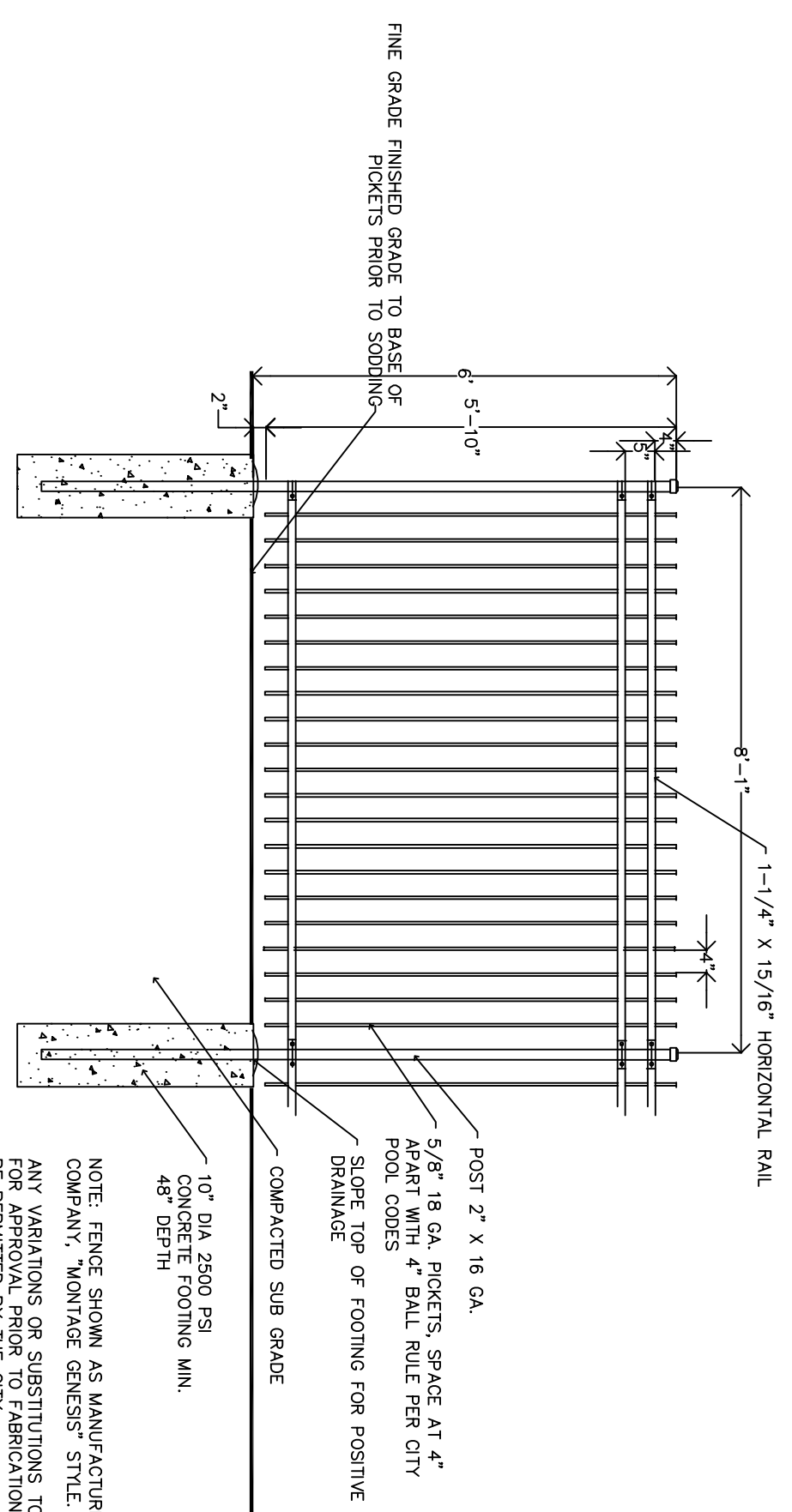


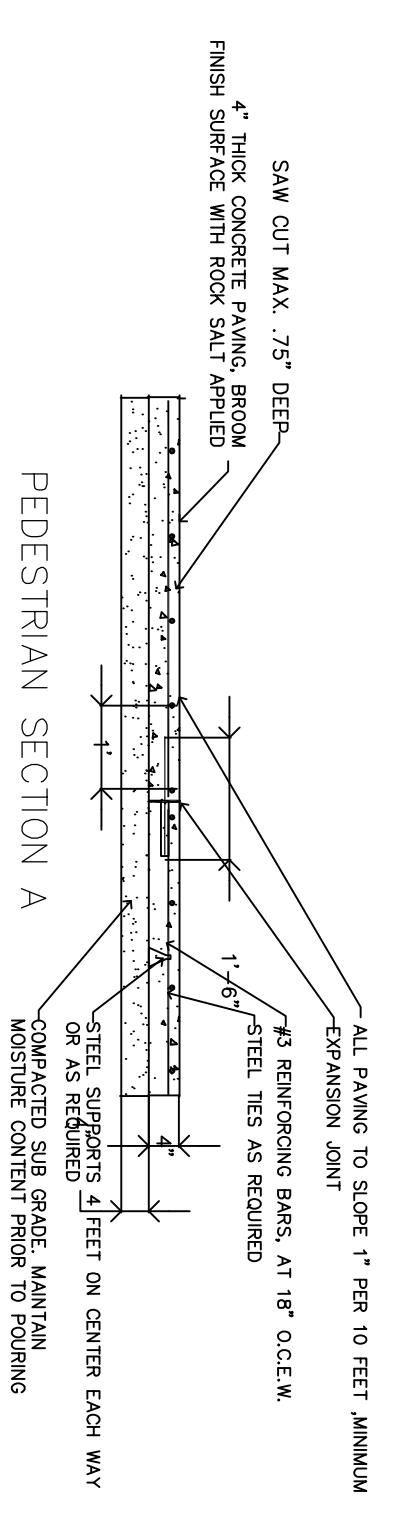
1 6'-0" WOOD FENCE BOARD ON BOARD WITH GAL. POLES  
NOT TO SCALE



3 STONE COLUMN 1'-6" SQUARE AND SIGN WALL (6'-0" TYPICAL)  
N.T.S.



2 SITE 6' HIGH FENCE DETAIL  
N.T.S.



4 SITE CONCRETE PEDESTRIAN SIDEWALK PAVING DETAILS  
N.T.S.

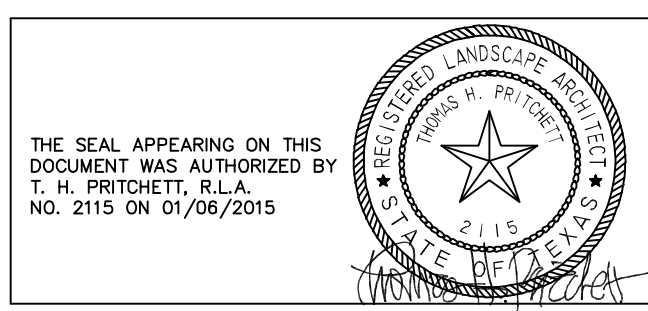
- EXPANSION JOINT NOTES:
1. 0.25" DIA. BRASSER ROD, REINFORCED JOINT FILLER, NON ABSORBING NON-STAINING.
  2. 2" WOOD OR ASPHALTIC FIBER MESH JOINT TO BE LEFT LOW 1" BELOW TOP OF PAVING TO ALLOW FOR BACKLOG OF WATER.
  3. 0.5" - 0.75" HD WOOD OR ASPHALTIC FIBER MESH JOINT TO BE LEFT LOW 1" BELOW TOP OF PAVING TO ALLOW FOR BACKLOG OF WATER.
  4. SEALANT, THERMO THIC JOINT SEALANT, 1/2" DIA. COMPANION SEALANTS TO BE APPLIED TO BOTH SIDES OF JOINT.
  5. SEALANT, THERMO THIC JOINT SEALANT, 1/2" DIA. COMPANION SEALANTS TO BE APPLIED TO BOTH SIDES OF JOINT.
  6. CLEANING SURFACES, AND APPLYING KEATY POINT OR TOL SEALANT TO PROVIDE PROPER COMPANION CAP TO BE APPLIED TO FINISHED SEALANT TO REDUCE SMOG AND TRACKING UNTIL DRY.

- CONCRETE CONSTRUCTION NOTES
1. All concrete construction shall be in accordance with the local building code of Rockwall, Texas and any other codes of applicable regulatory agencies. The seal note furnished by the owner or general contractor shall over ride all notes and details on this plan. If the requirement exceeds what is shown on the drawings, the contractor shall be in accordance with 401.318.
  2. All concrete detailing and construction shall be in accordance with 401.318.
  3. All concrete shall be placed and finished in accordance with 401.318, 401.319, 401.320, 401.321, 401.322, 401.323, 401.324, 401.325, 401.326, 401.327, 401.328, 401.329, 401.330, 401.331, 401.332, 401.333, 401.334, 401.335, 401.336, 401.337, 401.338, 401.339, 401.340, 401.341, 401.342, 401.343, 401.344, 401.345, 401.346, 401.347, 401.348, 401.349, 401.350, 401.351, 401.352, 401.353, 401.354, 401.355, 401.356, 401.357, 401.358, 401.359, 401.360, 401.361, 401.362, 401.363, 401.364, 401.365, 401.366, 401.367, 401.368, 401.369, 401.370, 401.371, 401.372, 401.373, 401.374, 401.375, 401.376, 401.377, 401.378, 401.379, 401.380, 401.381, 401.382, 401.383, 401.384, 401.385, 401.386, 401.387, 401.388, 401.389, 401.390, 401.391, 401.392, 401.393, 401.394, 401.395, 401.396, 401.397, 401.398, 401.399, 401.400, 401.401, 401.402, 401.403, 401.404, 401.405, 401.406, 401.407, 401.408, 401.409, 401.410, 401.411, 401.412, 401.413, 401.414, 401.415, 401.416, 401.417, 401.418, 401.419, 401.420, 401.421, 401.422, 401.423, 401.424, 401.425, 401.426, 401.427, 401.428, 401.429, 401.430, 401.431, 401.432, 401.433, 401.434, 401.435, 401.436, 401.437, 401.438, 401.439, 401.440, 401.441, 401.442, 401.443, 401.444, 401.445, 401.446, 401.447, 401.448, 401.449, 401.450, 401.451, 401.452, 401.453, 401.454, 401.455, 401.456, 401.457, 401.458, 401.459, 401.460, 401.461, 401.462, 401.463, 401.464, 401.465, 401.466, 401.467, 401.468, 401.469, 401.470, 401.471, 401.472, 401.473, 401.474, 401.475, 401.476, 401.477, 401.478, 401.479, 401.480, 401.481, 401.482, 401.483, 401.484, 401.485, 401.486, 401.487, 401.488, 401.489, 401.490, 401.491, 401.492, 401.493, 401.494, 401.495, 401.496, 401.497, 401.498, 401.499, 401.500.
  4. All concrete shall be placed and finished in accordance with 401.318, 401.319, 401.320, 401.321, 401.322, 401.323, 401.324, 401.325, 401.326, 401.327, 401.328, 401.329, 401.330, 401.331, 401.332, 401.333, 401.334, 401.335, 401.336, 401.337, 401.338, 401.339, 401.340, 401.341, 401.342, 401.343, 401.344, 401.345, 401.346, 401.347, 401.348, 401.349, 401.350, 401.351, 401.352, 401.353, 401.354, 401.355, 401.356, 401.357, 401.358, 401.359, 401.360, 401.361, 401.362, 401.363, 401.364, 401.365, 401.366, 401.367, 401.368, 401.369, 401.370, 401.371, 401.372, 401.373, 401.374, 401.375, 401.376, 401.377, 401.378, 401.379, 401.380, 401.381, 401.382, 401.383, 401.384, 401.385, 401.386, 401.387, 401.388, 401.389, 401.390, 401.391, 401.392, 401.393, 401.394, 401.395, 401.396, 401.397, 401.398, 401.399, 401.400, 401.401, 401.402, 401.403, 401.404, 401.405, 401.406, 401.407, 401.408, 401.409, 401.410, 401.411, 401.412, 401.413, 401.414, 401.415, 401.416, 401.417, 401.418, 401.419, 401.420, 401.421, 401.422, 401.423, 401.424, 401.425, 401.426, 401.427, 401.428, 401.429, 401.430, 401.431, 401.432, 401.433, 401.434, 401.435, 401.436, 401.437, 401.438, 401.439, 401.440, 401.441, 401.442, 401.443, 401.444, 401.445, 401.446, 401.447, 401.448, 401.449, 401.450, 401.451, 401.452, 401.453, 401.454, 401.455, 401.456, 401.457, 401.458, 401.459, 401.460, 401.461, 401.462, 401.463, 401.464, 401.465, 401.466, 401.467, 401.468, 401.469, 401.470, 401.471, 401.472, 401.473, 401.474, 401.475, 401.476, 401.477, 401.478, 401.479, 401.480, 401.481, 401.482, 401.483, 401.484, 401.485, 401.486, 401.487, 401.488, 401.489, 401.490, 401.491, 401.492, 401.493, 401.494, 401.495, 401.496, 401.497, 401.498, 401.499, 401.500.

5. All concrete (except drilled piers) shall be delivered to the job site at a slump of 3" +/- 1". No additional water shall be added to the concrete at the job site. All concrete (except drilled piers) shall utilize a high range water reducer (superplasticizer) conforming to ASTM C-494, Type F and shall be placed and finished in accordance with 401.318, 401.319, 401.320, 401.321, 401.322, 401.323, 401.324, 401.325, 401.326, 401.327, 401.328, 401.329, 401.330, 401.331, 401.332, 401.333, 401.334, 401.335, 401.336, 401.337, 401.338, 401.339, 401.340, 401.341, 401.342, 401.343, 401.344, 401.345, 401.346, 401.347, 401.348, 401.349, 401.350, 401.351, 401.352, 401.353, 401.354, 401.355, 401.356, 401.357, 401.358, 401.359, 401.360, 401.361, 401.362, 401.363, 401.364, 401.365, 401.366, 401.367, 401.368, 401.369, 401.370, 401.371, 401.372, 401.373, 401.374, 401.375, 401.376, 401.377, 401.378, 401.379, 401.380, 401.381, 401.382, 401.383, 401.384, 401.385, 401.386, 401.387, 401.388, 401.389, 401.390, 401.391, 401.392, 401.393, 401.394, 401.395, 401.396, 401.397, 401.398, 401.399, 401.400, 401.401, 401.402, 401.403, 401.404, 401.405, 401.406, 401.407, 401.408, 401.409, 401.410, 401.411, 401.412, 401.413, 401.414, 401.415, 401.416, 401.417, 401.418, 401.419, 401.420, 401.421, 401.422, 401.423, 401.424, 401.425, 401.426, 401.427, 401.428, 401.429, 401.430, 401.431, 401.432, 401.433, 401.434, 401.435, 401.436, 401.437, 401.438, 401.439, 401.440, 401.441, 401.442, 401.443, 401.444, 401.445, 401.446, 401.447, 401.448, 401.449, 401.450, 401.451, 401.452, 401.453, 401.454, 401.455, 401.456, 401.457, 401.458, 401.459, 401.460, 401.461, 401.462, 401.463, 401.464, 401.465, 401.466, 401.467, 401.468, 401.469, 401.470, 401.471, 401.472, 401.473, 401.474, 401.475, 401.476, 401.477, 401.478, 401.479, 401.480, 401.481, 401.482, 401.483, 401.484, 401.485, 401.486, 401.487, 401.488, 401.489, 401.490, 401.491, 401.492, 401.493, 401.494, 401.495, 401.496, 401.497, 401.498, 401.499, 401.500.
6. Proportions of ingredients for concrete shall be selected by past field experience or based on laboratory trial mixes to produce plasticity, durability, specified strength, and properties as required by the manufacturer's recommendations.
7. Immediately before placement, concrete shall be protected from premature drying, but not cold temperatures, rain, flowing water, and mechanical injury. Approved methods of curing include: ponding continuous spraying, continuous wet mats, and liquid membrane forming compounds. Concrete joints may be formed, loaded, or sealed immediately upon to 1/3 the thickness of the slab. Construction joints shall be continuous across joints.
8. Construction joints shall be continuous across joints. Reinforcement shall be continuous across joints.
9. Reinforcement splices shall be 24" overlap of reinforcing steel bars and mesh. Where necessary, top bars shall be spliced at mid-span between piers and bottom bars shall be spliced over mid-span.
10. When pouring the drilled piers, care shall be taken to avoid overflows of concrete at the top of the shaft. The shaft size must remain constant to the underside of the supported slab, beam, or wall.
11. Temporary construction and final grading must slope away from all concrete elements. All grading must be completed immediately after concrete is cast. If rain occurs before backfill is placed the excavations must be pumped immediately and kept dry at all times.
12. Colored concrete placed on the site shall be protected as above and covered with plastic to protect color finish. Care as per manufacturer's recommendations and specifications. Tolerances shall be as per manufacturer's recommendations and specifications. Finishing concrete that has been colored. All writers and finishers shall be trained.
13. Sample color finishes for all concrete shall be placed on site by owner approval before placing concrete on site as shown on these drawings.
14. Concrete to finish all concrete piers for electric transformers in accordance with TUL Electric specifications.

© 2015 T.H. PRITCHETT ASSOCIATES  
LANDSCAPE ARCHITECTS AND PLANNER  
THESE DRAWINGS AND /OR SPECIFICATIONS PROVIDED WITHIN THIS DOCUMENT ARE THE PROPERTY OF T.H. PRITCHETT ASSOCIATES AND ARE NOT TO BE REPRODUCED OR TRANSMITTED IN ANY FORM OR BY ANY MEANS, ELECTRONIC OR MECHANICAL, INCLUDING PHOTOCOPYING, RECORDING, OR BY ANY INFORMATION STORAGE AND RETRIEVAL SYSTEM, WITHOUT THE WRITTEN PERMISSIONS FROM T.H. PRITCHETT ASSOCIATES. REPRODUCTION IS PROHIBITED.

T.H.Pritchett / Associates  
LANDSCAPE ARCHITECTS  
1218 CAMINO LAGO  
IRVING, TEXAS 75039  
214-697-2580  
tom@landdesignplan.com



**DOUPHRATE & ASSOCIATES, INC.**  
ENGINEERING • PROJECT MANAGEMENT • SURVEYING  
2235 RIDGE RD., # 200 ROCKWALL, TEXAS 75087  
PHONE: (972)771-9004 FAX: (972)771-9005

LANDSCAPE PLANTING PLAN  
LAKEVIEW SUMMIT  
PHASE 4  
CITY OF ROCKWALL, ROCKWALL COUNTY, TEXAS

REVISION	THP
CHECKED	THP
DRAWN	THP
DATE	01/08/2015
SITE FENCE AND SIDEWALK PLAN	
PROJECT	

FSP-4  
OR