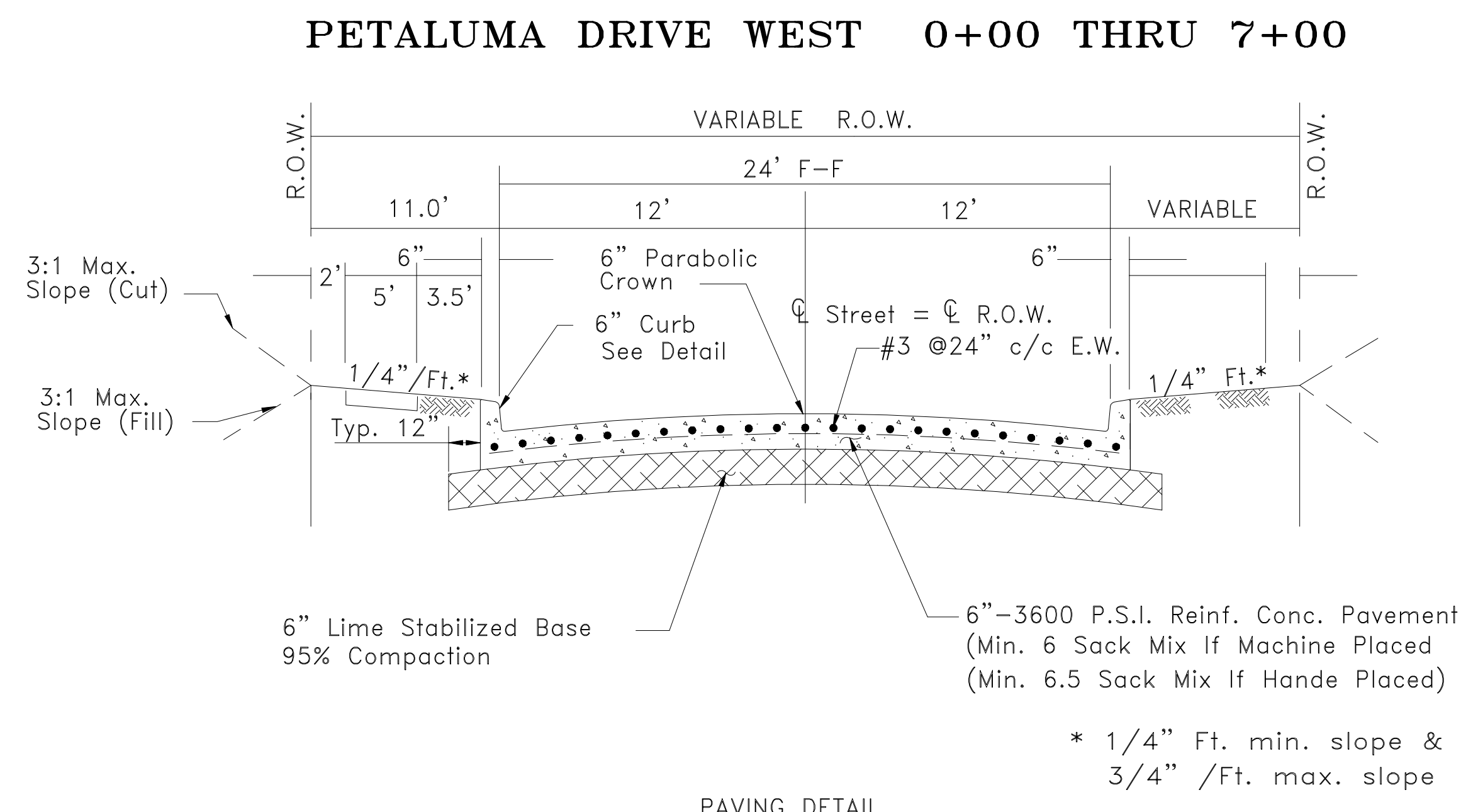
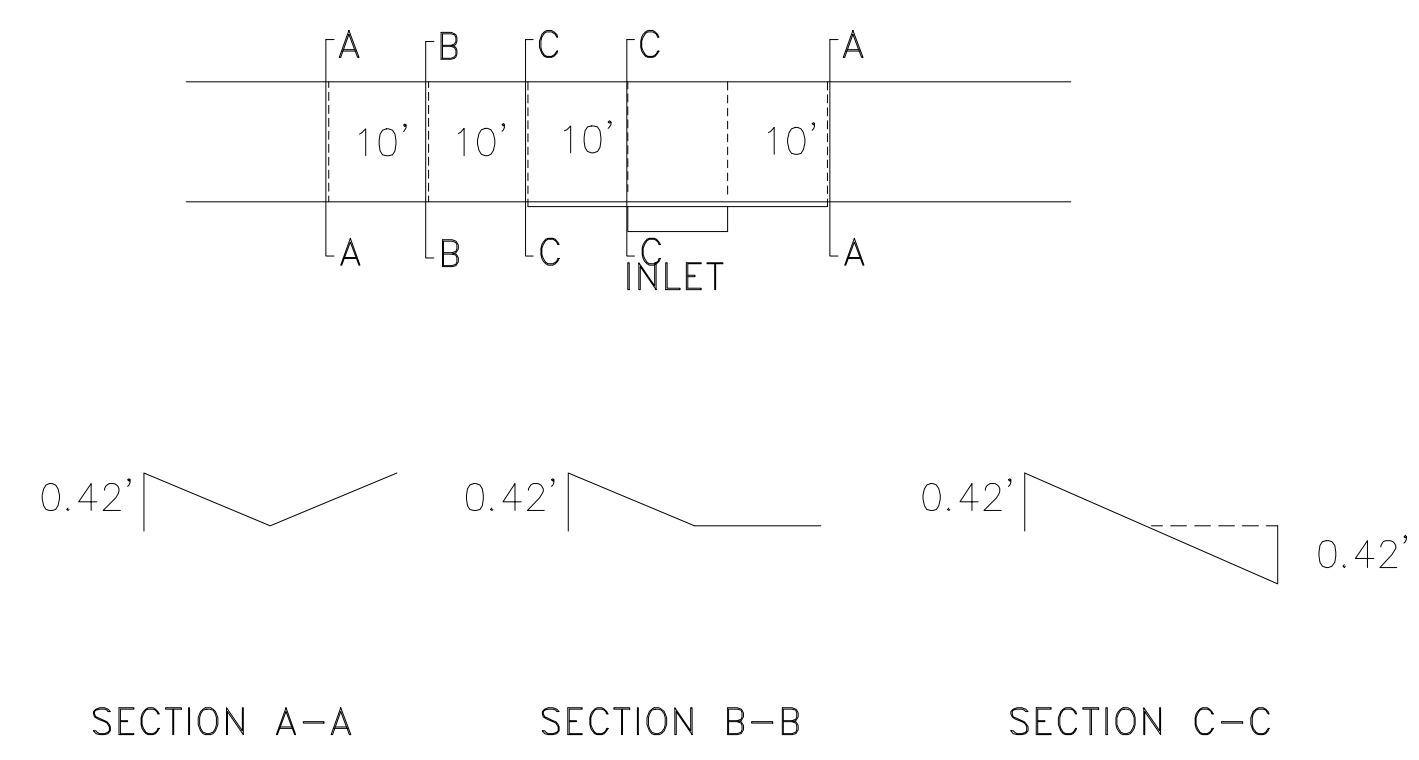


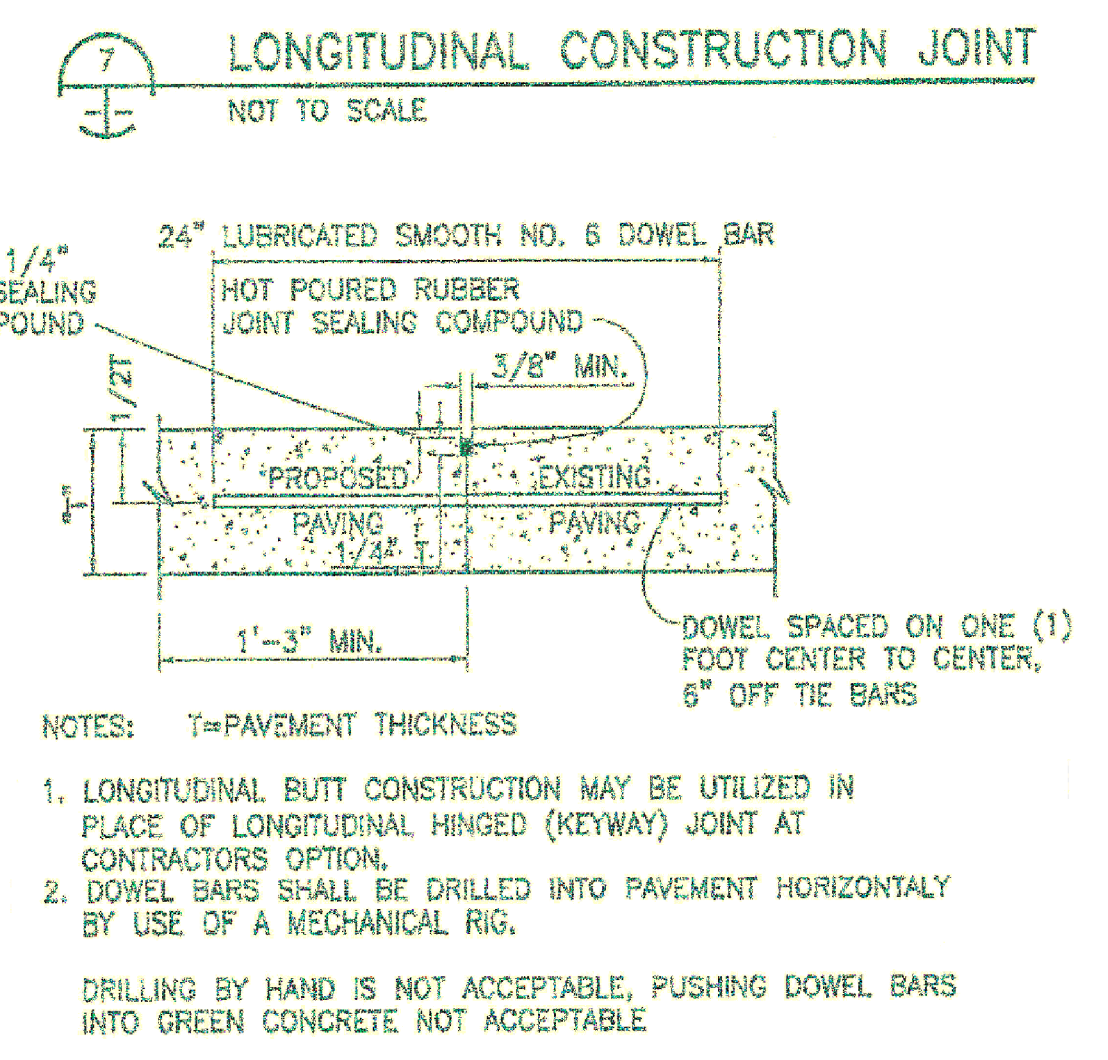
LOCAL RESIDENTIAL
PAVING DETAIL



PAVING DETAIL

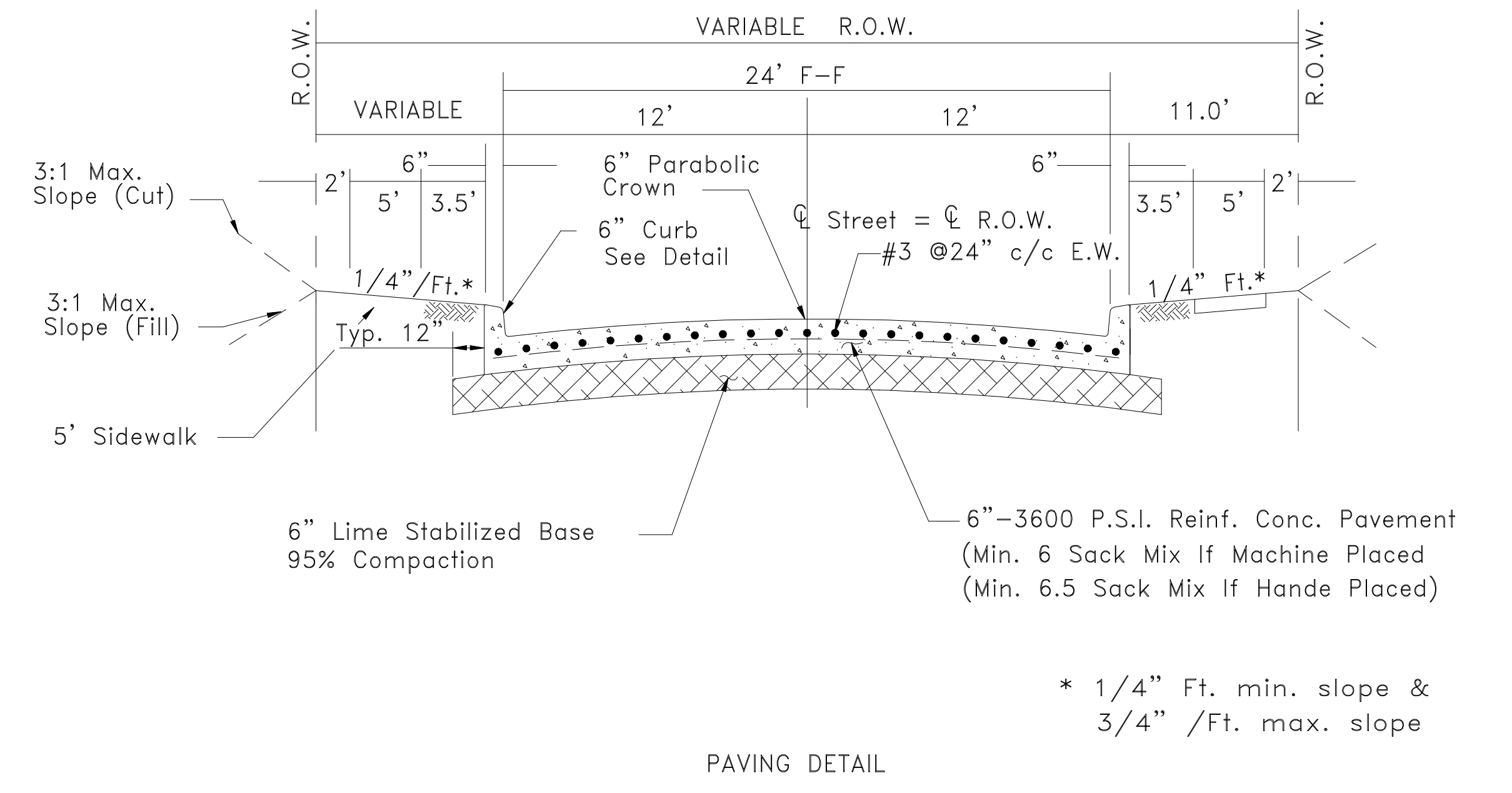


TYPICAL ALLEY WARPING AT INLET

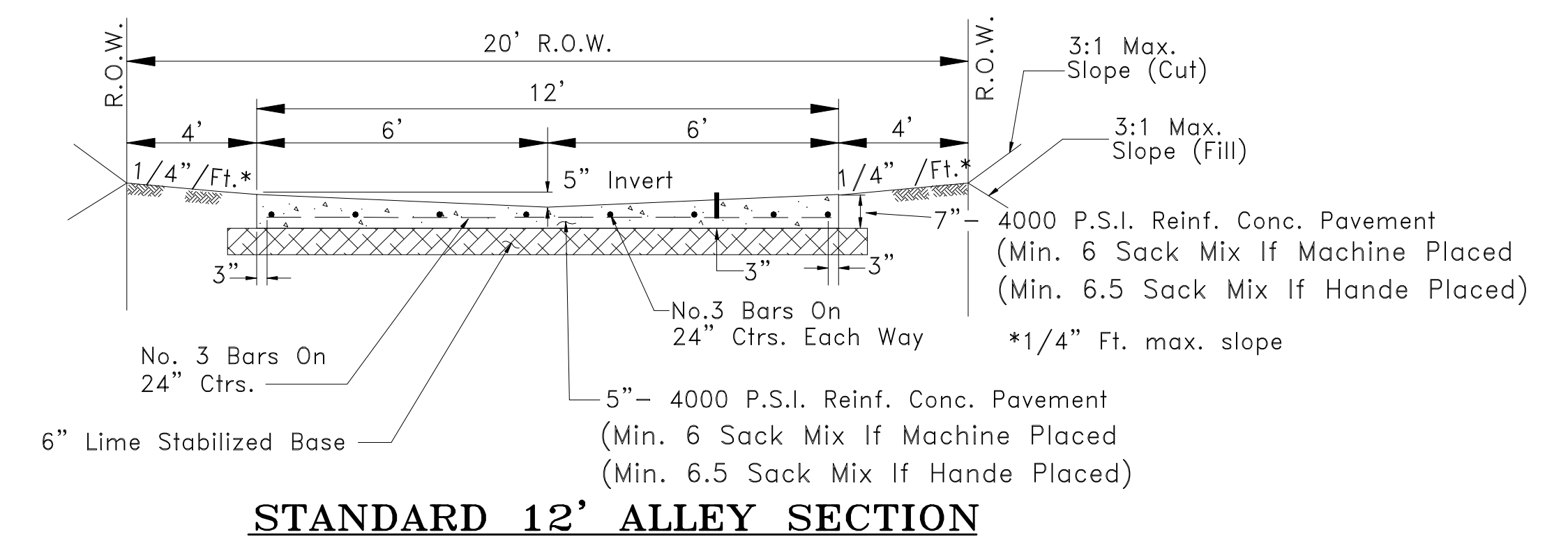
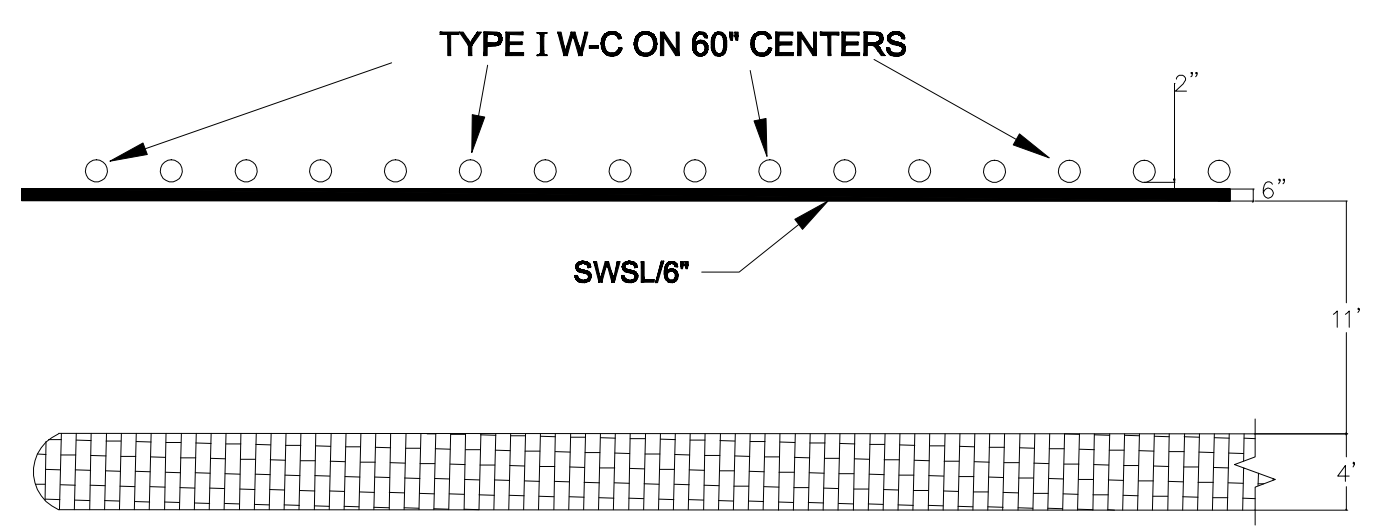


REVISED TO CONFORM TO CONSTRUCTION RECORDS.
 DATE: 12-1-16

PETALUMA DRIVE EAST 0+00 THRU 7+50



PAVING DETAIL



STANDARD 12' ALLEY SECTION