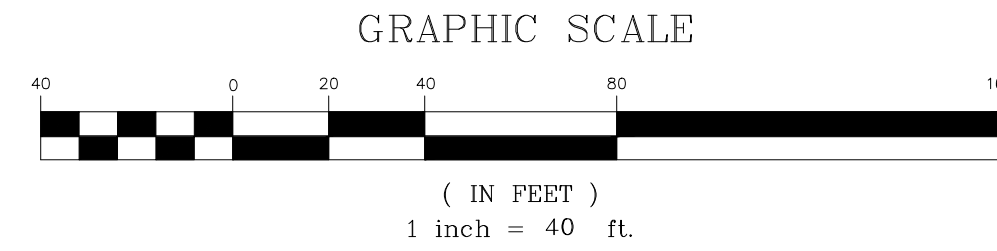


TELEGRAPH DRIVE

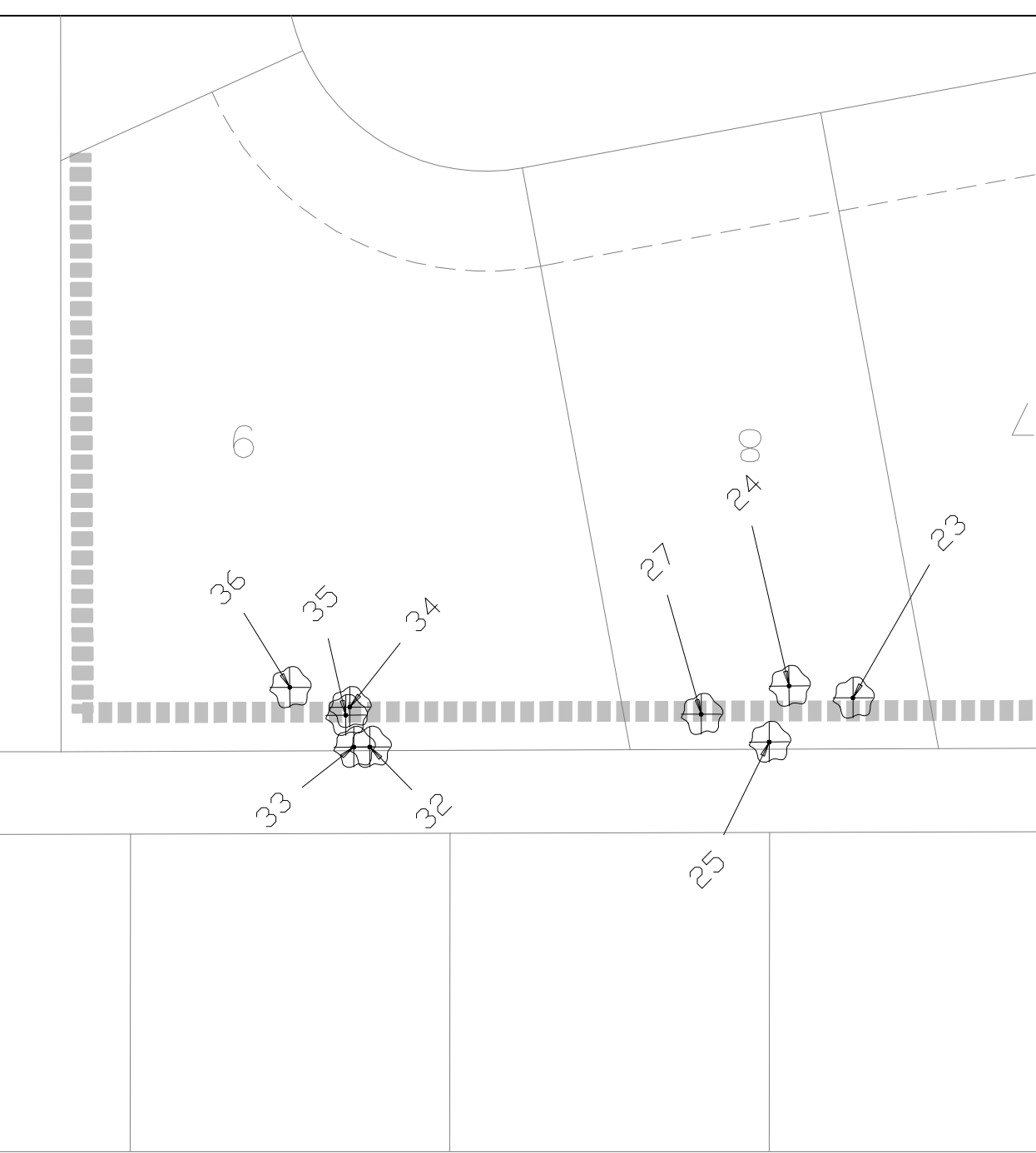
50' R.O.W.

16

25' B.L.



BUTLER CEMETERY



THE SHORES, PHASE III
CABINET C, SLIDE 99

LAKEVIEW SUMMIT PHASE FOUR TREES

TREE#	SPECIES	MULTI	DBH	REMARKS
1	EASTERN RED CEDAR		21	
2	EASTERN RED CEDAR	2	14	
3	EASTERN RED CEDAR	4	19	
4	EASTERN RED CEDAR	4	20	
5	EASTERN RED CEDAR		11	
6	EASTERN RED CEDAR	4	17.5	
7	TEXAS ASH		6	
8	CEDAR ELM		8.5	
9	CEDAR ELM		5	
10	TEXAS ASH		6.5	
11	TEXAS ASH		10	
12	TEXAS ASH		12.5	
13	TEXAS ASH		4.5	LEAN
14	TEXAS ASH	2	13.5	
15	TEXAS ASH		6	
16	TEXAS ASH	4	21	
17	TEXAS ASH	3	18	
18	WHITE OAK		4.5	
19	TEXAS ASH		6	
20	TEXAS ASH		8	LEAN/DIEBACK-DECAY
21	TEXAS ASH		9	
22	TEXAS ASH		5	
23	TEXAS ASH	2	11.5	
24	RED OAK		33	
25	CEDAR ELM		7	
26	TEXAS ASH		7.5	LEAN
27	RED OAK		27.5	
28	TEXAS ASH		11	LEAN
29	CEDAR ELM		5.5	
30	TEXAS ASH		7	LEAN
31	PERSIMMON		6	
32	TEXAS ASH	2	22	
33	TEXAS ASH		11.5	
34	TEXAS PLUM		6.5	DIEBACK-DECAY
35	TEXAS PLUM		4.5	
36	TEXAS ASH		5.5	
37	TEXAS ASH		4.5	
38	CEDAR ELM		11.5	
39	CEDAR ELM		6.5	
40	EASTERN RED CEDAR		12	
41	TEXAS ASH		4.5	
42	CEDAR ELM		7.5	
43	EASTERN RED CEDAR	2	16	
44	TEXAS ASH		8	
45	TEXAS ASH		9.5	
46	TEXAS ASH		4.5	
47	TEXAS ASH		4	
48	EASTERN RED CEDAR		12	
49	TEXAS ASH		5.5	
50	TEXAS ASH		4.5	
51	TEXAS ASH	2	9	
52	TEXAS ASH		6	
53	TEXAS ASH		7.5	
54	TEXAS ASH		5.5	
55	TEXAS ASH		5.5	
56	TEXAS ASH		8.5	
57	CEDAR ELM		4.5	
58	CEDAR ELM		7.5	
59	TEXAS ASH		4	
60	TEXAS ASH		4	
61	TEXAS ASH	3	10.5	
62	TEXAS ASH		4.5	
63	CEDAR ELM		6.5	
64	TEXAS ASH		5.5	
65	TEXAS ASH		4.5	
66	CEDAR ELM		5.5	
67	CEDAR ELM		7	
68	TEXAS ASH		11.5	
69	TEXAS ASH		5	
70	TEXAS ASH		4.5	
71	TEXAS ASH		4	
72	TEXAS ASH		6	
73	TEXAS ASH		6	
74	CHITTUNWOOD		6	
75	TEXAS ASH		5	
76	CEDAR ELM		7	
77	TEXAS ASH		4.5	
78	TEXAS ASH		4.5	
79	TEXAS ASH		5.7	
80	CEDAR ELM			
81	CEDAR ELM		4.5	
82	CEDAR ELM		11.5	LEAN

TREE#	SPECIES	MULTI	DBH	REMARKS
83	CEDAR ELM		8.5	
84	TEXAS ASH		10.5	
85	TEXAS ASH		4	
86	TEXAS ASH		5	
87	TEXAS ASH		5.5	
88	TEXAS ASH		5.5	
89	TEXAS ASH		17	
90	CEDAR ELM	2	6	
91	CEDAR ELM		4	
92	CEDAR ELM		8	
93	CEDAR ELM		5.5	
94	CEDAR ELM		5	
95	TEXAS ASH		4	
96	CEDAR ELM		6	
97	TEXAS ASH		8.5	
98	CEDAR ELM		6.5	
99	TEXAS ASH		5	
100	CEDAR ELM		12.5	
101	CEDAR ELM		10	
102	CEDAR ELM		15	
103	CEDAR ELM		5.5	
104	CEDAR ELM		5	
105	CEDAR ELM		6	
106	CEDAR ELM		6	
107	CEDAR ELM		5.5	
108	CEDAR ELM		8	
109	CEDAR ELM		5	
110	TEXAS ASH		4.5	
111	CEDAR ELM		8.5	
112	CEDAR ELM		4	
113	CEDAR ELM		5	
114	SOAPBERRY		4.5	
115	CEDAR ELM		6	
116	TEXAS ASH		4.5	
117	TEXAS ASH		4	
118	TEXAS ASH		5	
119	CEDAR ELM		4	
120	CEDAR ELM		4	
121	CEDAR ELM		8	
122	CEDAR ELM		5	
123	TEXAS ASH		14.5	
124	CEDAR ELM		6	
125	CEDAR ELM		6.5	
126	CEDAR ELM		13.5	
127	TEXAS ASH		5.5	
128	CEDAR ELM		6	
129	CHITTUNWOOD		5	
130	TEXAS ASH		4.5	
131	TEXAS ASH		5.5	
132	CEDAR ELM		6	
133	CEDAR ELM		6	
134	TEXAS ASH		4	
135	CEDAR ELM		8	
136	TEXAS ASH		5	
137	CEDAR ELM		11	
138	CHITTUNWOOD		5	
139	TEXAS ASH		4.5	
140	TEXAS ASH		5	
141	CEDAR ELM		10	
142	CEDAR ELM		4.5	
143	CEDAR ELM		4.5	
144	TEXAS ASH		4.5	
145	CEDAR ELM		8.5	
146	CEDAR ELM		9.5	
147	CEDAR ELM		6	
148	CEDAR ELM		5	
149	CEDAR ELM		7	
150	CEDAR ELM		6.5	
151	CEDAR ELM		6	
152	CEDAR ELM		7	
153	CEDAR ELM		10.5	
154	TEXAS ASH		21	
155	CEDAR ELM		10	
156	CEDAR ELM		9.5	
157	CEDAR ELM		12.5	
158	CEDAR ELM		4	
159	CEDAR ELM		12	
160	CEDAR ELM		11	
161	TEXAS ASH		4.5	
162	CEDAR ELM	2	9	
163	SOAPBERRY		9	
164	CEDAR ELM		11	

TREE#	SPECIES	MULTI	DBH	REMARKS
165	CEDAR ELM		12.5	
166	CEDAR ELM		6.5	
167	CEDAR ELM		6	
168	WHITE OAK		23	
169	CEDAR ELM		6	
170	SOAPBERRY		4	
171	CEDAR ELM		8	
172	CEDAR ELM		5.5	
173	TEXAS ASH		4	
174	CEDAR ELM		4.5	
175	CEDAR ELM		6.5	
176	CEDAR ELM		11	
177	TEXAS ASH		5	
178	CEDAR ELM		4.5	
179	CEDAR ELM		4	
180	CEDAR ELM		5.5	
181	CEDAR ELM		4.5	
182	CEDAR ELM		5	
183	CEDAR ELM		7	
184	CEDAR ELM		7.5	
185	CEDAR ELM		4.5	
186	CEDAR ELM		4.5	
187	TEXAS ASH		5	
188	TEXAS ASH		5	
189	TEXAS ASH	2	7.5	
190	CEDAR ELM		4.5	
191	TEXAS ASH		5.5	
192	TEXAS ASH		6.5	
193	CEDAR ELM		4.5	
194	TEXAS ASH		6.5	
195	TEXAS ASH		5.5	
196	PRICKLY ASH		4.5	
197	CEDAR ELM		6	
198	TEXAS ASH		9	
199	EASTERN RED CEDAR		12	
200	EASTERN RED CEDAR		14	
201	TEXAS ASH		5	
202	CEDAR ELM		5	
203	TEXAS ASH		9	
204	AMERICAN ELM		4.5	
205	TEXAS ASH		7.5	
206	TEXAS ASH		6	
207	TEXAS ASH		4.5	
208	TEXAS ASH		13.5	
209	TEXAS ASH		7	
210	TEXAS ASH		5.5	
211	TEXAS ASH		5	
212	CEDAR ELM		6	
213	EASTERN RED CEDAR	3	20	
214	AMERICAN ELM		6.5	
215	AMERICAN ELM		7.5	
216	TEXAS ASH		6	
217	TEXAS ASH		6.5	
218	TEXAS ASH		7.5	
219	AMERICAN ELM		7	
220	AMERICAN ELM		9.5	
221	AMERICAN ELM		8.5	
222	TEXAS ASH		8	
223	TEXAS ASH		6	
224	TEXAS ASH		4	
225	TEXAS ASH		8	
226	CEDAR ELM		6.5	
227	CEDAR ELM		5	
228	AMERICAN ELM		6	
229	AMERICAN ELM		6	
230	CEDAR ELM		6.5	
231	TEXAS ASH		7	
232	TEXAS ASH		4.5	
233	TEXAS ASH		6	
234	TEXAS ASH		4	
235	TEXAS ASH		4	
236	TEXAS ASH		5.5	
237	CEDAR ELM		4	
238	TEXAS ASH		4	
239	EASTERN RED CEDAR	4	18	
240	AMERICAN ELM		10	
241	EASTERN RED CEDAR		16	
242	CEDAR ELM		5	
243	CEDAR ELM		5.5	
244	TEXAS ASH		4.5	
245	TEXAS ASH		5.5	
246	CEDAR ELM		7	

TREE#	SPECIES	MULTI	DBH	REMARKS
247	CEDAR ELM		5.5	
248	CEDAR ELM		4.5	LEAN
249	CEDAR ELM		6.5	
250	TEXAS ASH		5.5	
251	CEDAR ELM		5.5	
252	TEXAS ASH		6	ROT
253	CEDAR ELM		6	
254	TEXAS ASH		4	
255	TEXAS ASH		4	
256	CHITTUNWOOD		9.5	
257	CEDAR ELM		4.5	
258	TEXAS ASH		6	
259	TEXAS ASH		4.5	
260	TEXAS ASH		4	
261	CEDAR ELM		5.5	DIEBACK-DECAY
262	CEDAR ELM		9	
263	TEXAS ASH		4	
264	TEXAS ASH	2	6.5	
265	TEXAS ASH		4.5	
266	TEXAS ASH		5	
267	TEXAS ASH		4.5	
268	TEXAS ASH		15	DIEBACK-DECAY/ROT
269	CEDAR ELM		5	
270	CEDAR ELM		8.5	
271	TEXAS ASH		5.5	
272	CEDAR ELM		12	
273	TEXAS ASH		6.5	
274	TEXAS ASH		5.5	
275	TEXAS ASH		4.5	
276	TEXAS ASH		5	
277	TEXAS ASH		5.5	
278	TEXAS ASH		7	
279	TEXAS ASH		4.5	
280	TEXAS ASH		4	
281	CEDAR ELM		11.5	
282	TEXAS ASH		5	
283	CEDAR ELM		4.5	
284	CHITTUNWOOD		5.5	
285	CEDAR ELM		7	
286	TEXAS ASH		4	
287	TEXAS ASH		4.5	
288	TEXAS ASH		5.5	
289	CEDAR ELM		4.5	
290	CEDAR ELM		5.5	
291	CEDAR ELM		4	
292	TEXAS ASH		5.5	
293	CEDAR ELM		8	
294	CEDAR ELM		5	
295	CEDAR ELM		8.5	
296	CEDAR ELM		6.5	
297	EASTERN RED CEDAR	3	13	
298	CEDAR ELM		7.5	
299	CEDAR ELM		5	
300	CEDAR ELM		5	
301	TEXAS ASH	2	6	
302	TEXAS ASH		4.5	
303	TEXAS ASH		5.5	
304	EASTERN RED CEDAR	2	11	
305	TEXAS ASH		5	
306	CEDAR ELM		10	
307	CEDAR ELM		6.5	
308	CEDAR ELM		4.5	
309	CEDAR ELM		8.5	
310	TEXAS ASH		4	
311	TEXAS ASH		4.5	
312				