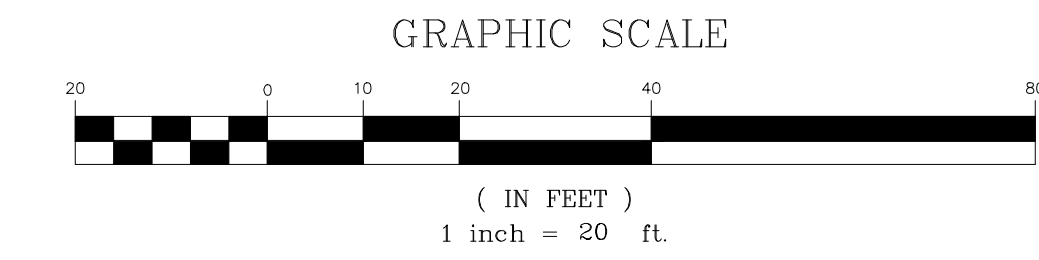
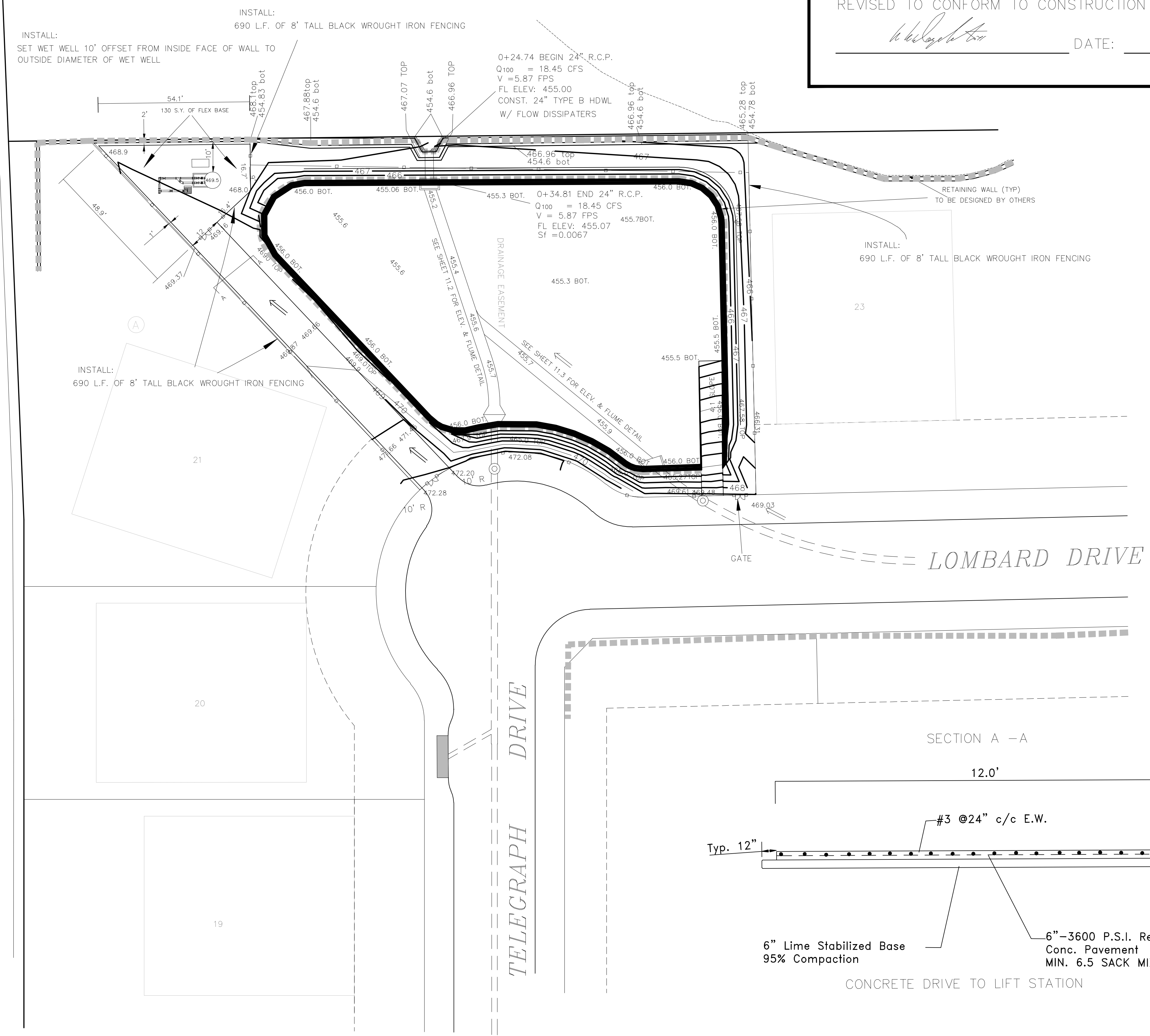


offsite drainage	cfs	FREE FLOW AREA	TOTAL SUBDIVISION AREA TO BE DETAINED	38.056 ACRES
	DEV	ACRES	EXIST CFS	
1	6.42	DEV. FLOW 1.31	38.92 AC	116.25
14	5.63	DEV. FLOW 1.15		
16	3.97	DEV. FLOW 0.81	LESS OFFSITE DRAINAGE	44.05 LESS
25	6.66	DEV. FLOW 1.36		
32	7.11	DEV. FLOW 1.45	STORM A	19.75 LESS
39	2.35	DEV. FLOW 0.48	STORM B	34.00 LESS
46	4.85	DEV. FLOW 0.99		
48	7.06	DEV. FLOW 1.44		
		RELEASE = EX. CFS - FREE FLOW - STORM A - STORM B		
		RELEASE =	18.45 CFS	
		44.05 DEV. FLOW	8.99	



REVISED TO CONFORM TO CONSTRUCTION RECORDS.
W.D. [Signature] DATE: 12-1-16



THE SEAL APPEARING ON THIS DRAWING IS THE PROPERTY OF W.D. DOUPHRADE & ASSOCIATES, INC. NO. 67002, F-886, ON DATE: OCT. 3, 2014

DOUPHRADE & ASSOCIATES, INC.
 ENGINEERING & PROJECT MANAGEMENT SURVEYING
 2235 RIDGE RD., # 200 ROCKWALL, TEXAS 75087
 PHONE: (972)771-9004 FAX: (972)771-9005

DETENTION POND PLAN
 LAKEVIEW SUMMIT, PHASE IV
 CITY OF ROCKWALL
 ROCKWALL COUNTY, TEXAS

REVISION
WLD. CHECKED
KEB. DRAWN
10/03 DATE
9919-ADENTPOND PROJECT
121 OF