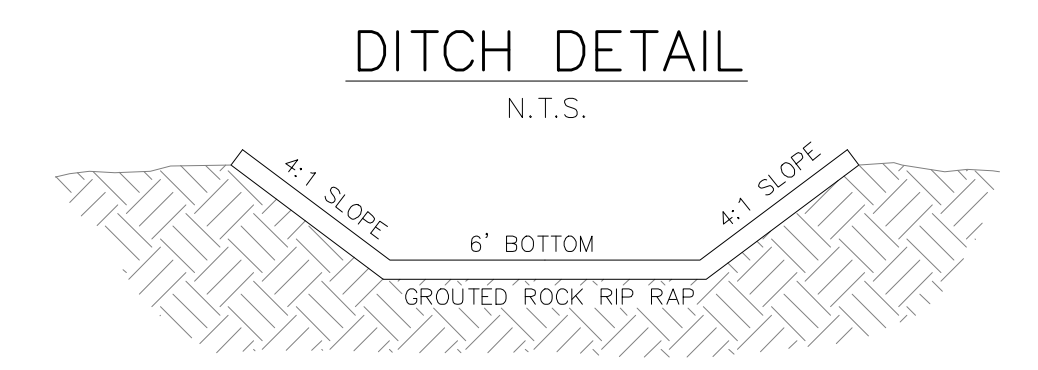
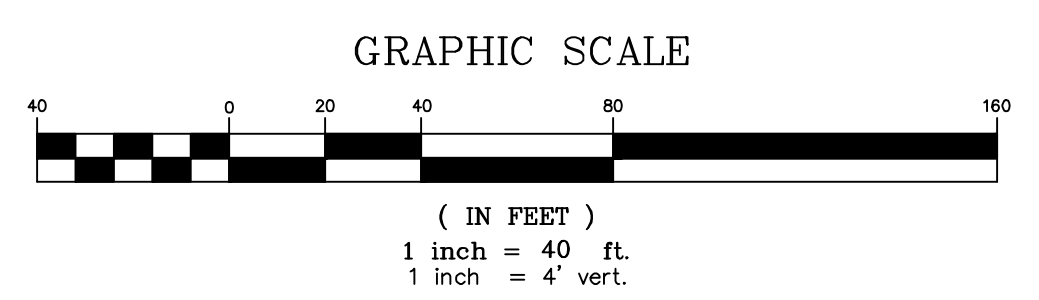
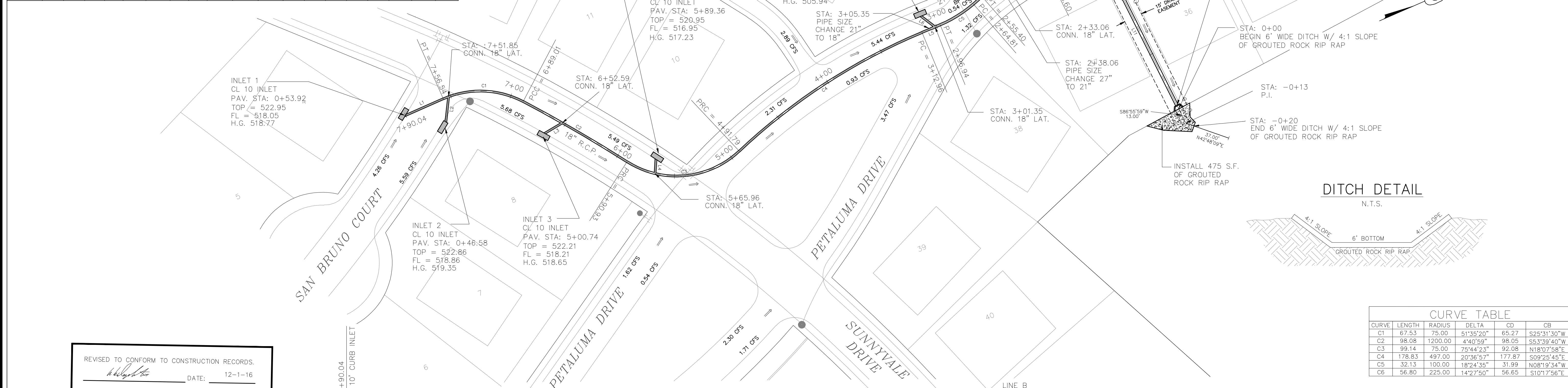


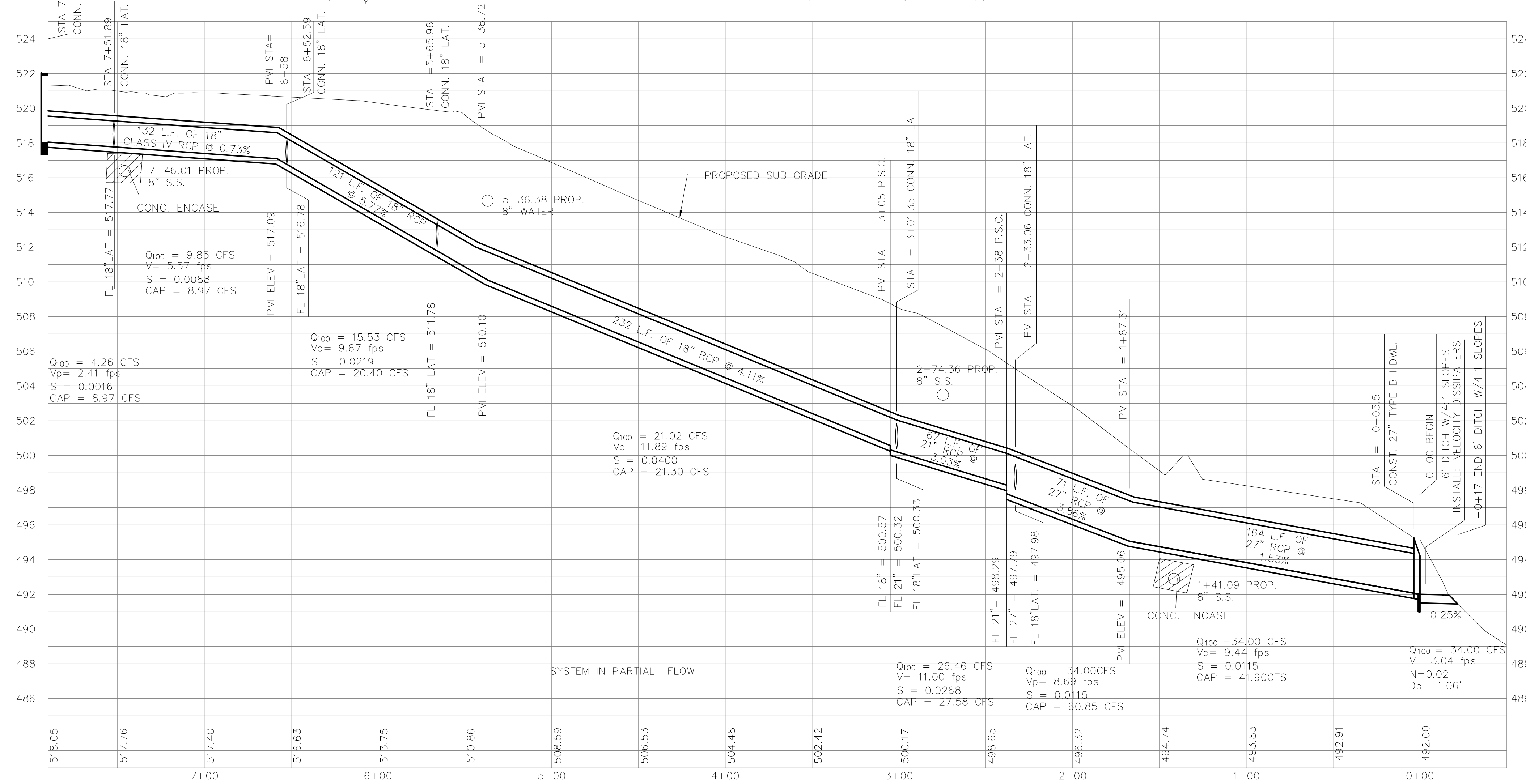
From	To	Box Length	Box Height	Box Width	DESIGN Q100	Pipe Size (in)	CAP Q100	FULL V	PARTIAL V	PARTIAL FLOW %	FLOW CHIT. No.	Kf	Flow Rtn	R ^{2/3}	Flow Area	FULL S	DESIGN HGL	HGL Rise	HGL Number	
STM-C																				494.25 Starting
Junction Loss	148.02	3.5	142.58		34	HPI	27	41.90	8.55	9.66	0.81	1.13	0.3700	0.5825	0.8814	3.978	0.0121	0.0183	1.7185	495.01
Junction Loss	167.31	146.05	21.22		34	HPI	27	41.90	8.55	9.66	0.81	1.13	0.3700	0.5825	0.8814	3.978	0.0121	0.0183	0.2557	496.84
Junction Loss	238.04	167.31	70.73		34	HPI	27	60.85	8.55	8.89	0.56	1.04	1.0000	0.5825	0.8814	3.978	0.0121	0.0386	0.8271	498.54
Junction Loss	305.34	238.04	67.29		26.46	PSC	21	27.58	11.00	12.43	0.96	1.13	0.7000	0.4375	0.5783	2.4053	0.0278	0.0303	1.8785	501.13
Junction Loss	465.94	305.34	160.60		21.02	PSC	18	21.30	11.89	12.61	0.99	1.06	1.0000	0.3750	0.5200	1.7671	0.0400	0.0411	1.8814	502.01
Junction Loss	652.59	465.94	186.65		15.53	PSC	18	20.40	8.79	9.87	0.78	1.10	1.0000	0.3750	0.5200	1.7671	0.0216	0.0377	1.8934	513.34
Junction Loss	751.84	652.59	99.25		9.85	PSC	18	8.97	5.57	5.57	1.10	1.00	1.0000	0.3750	0.5200	1.7671	0.0088	0.0073	-0.7186	512.82
Junction Loss	790.04	751.84	38.19		4.28	PSC	18	8.97	2.41	2.41	0.47	1.00	1.0000	0.3750	0.5200	1.7671	0.0016	0.0073	-0.3922	513.10



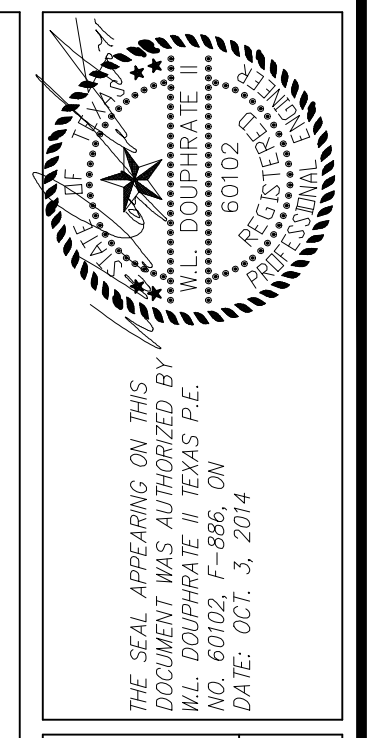
CURVE	LENGTH	RADIUS	DELTA	CD	CB
C1	67.53	75.00	51°35'20"	65.27	S25°31'30"W
C2	98.08	1200.00	4°40'59"	98.05	S53°39'40"W
C3	99.14	75.00	75°44'23"	92.08	N18°07'58"E
C4	178.83	497.00	20°36'57"	177.87	S09°25'45"E
C5	32.13	100.00	18°24'35"	31.99	N08°19'34"W
C6	56.80	225.00	14°27'50"	56.65	S10°17'56"E

LINE	LENGTH	BEARING
L1	33.50	N00°16'10"W
L2	20.79	N60°16'10"W
L3	16.71	N07°20'26"W
L4	11.69	S63°06'32"E
L5	16.02	N00°52'44"E
L6	14.37	N69°52'44"E
L7	53.26	N42°28'09"E
L8	31.09	S77°31'51"E
L9	31.29	N03°04'01"W
L10	21.21	S41°55'59"W
L11	146.16	S86°55'59"W
L12	9.41	S17°31'51"E

REVISED TO CONFORM TO CONSTRUCTION RECORDS.
 DATE: 12-1-16



BENCHMARKS:
 BRASS CAP MONUMENT NO. 10 SET IN CONCRETE IN THE CENTER OF GRASS MEDIAN IN MASTERS DRIVE BETWEEN NORTH LAKESHORE & SHORES BLVD.
 N 7032464.6317, E 2589554.1518
 ELEV. = 524.62



DOUPHRADE & ASSOCIATES, INC.
 ENGINEERING • PROJECT MANAGEMENT • SURVEYING
 2235 RIDGE RD., # 200 ROCKWALL, TEXAS 75087
 PHONE: (972)771-9004 FAX: (972)771-9005

STORM SEWER PLAN & PROFILE
 LINE B
 LAKEVIEW SUMMIT PH. 4
 CITY OF ROCKWALL, ROCKWALL COUNTY, TEXAS

REVISION
CHECKED
KEB.
DRAWN
10/14
DATE
9919-4 STM-2 LN B
PROJECT
111
OF