



THE SEAL APPEARING ON THIS DOCUMENT WAS AUTHORIZED BY W.L. DOUPHRATE II, TEXAS P.E. NO. 60102, F-886, ON DATE: 06/13/2014

DOUPHRATE & ASSOCIATES, INC.
 ENGINEERING • PROJECT MANAGEMENT • SURVEYING
 2235 RIDGE RD., # 200 ROCKWALL, TEXAS 75087
 PHONE: (972)771-9004 FAX: (972)771-9005

STORM SEWER PLAN & PROFILE
 LINE A
 LAKEVIEW SUMMIT, PHASE IV
 CITY OF ROCKWALL, ROCKWALL COUNTY, TEXAS

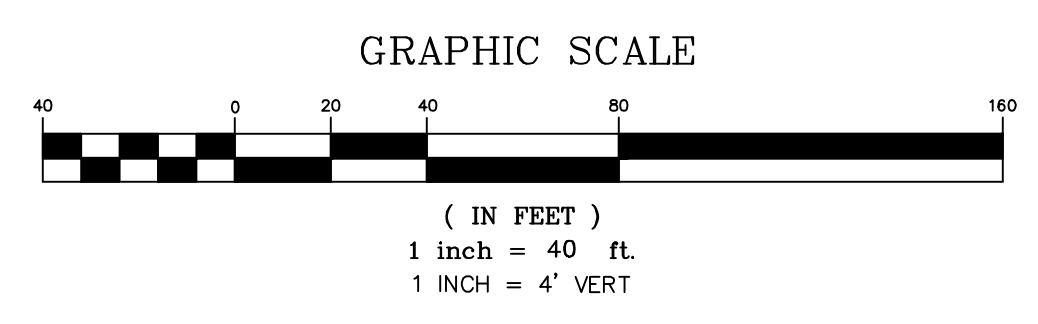
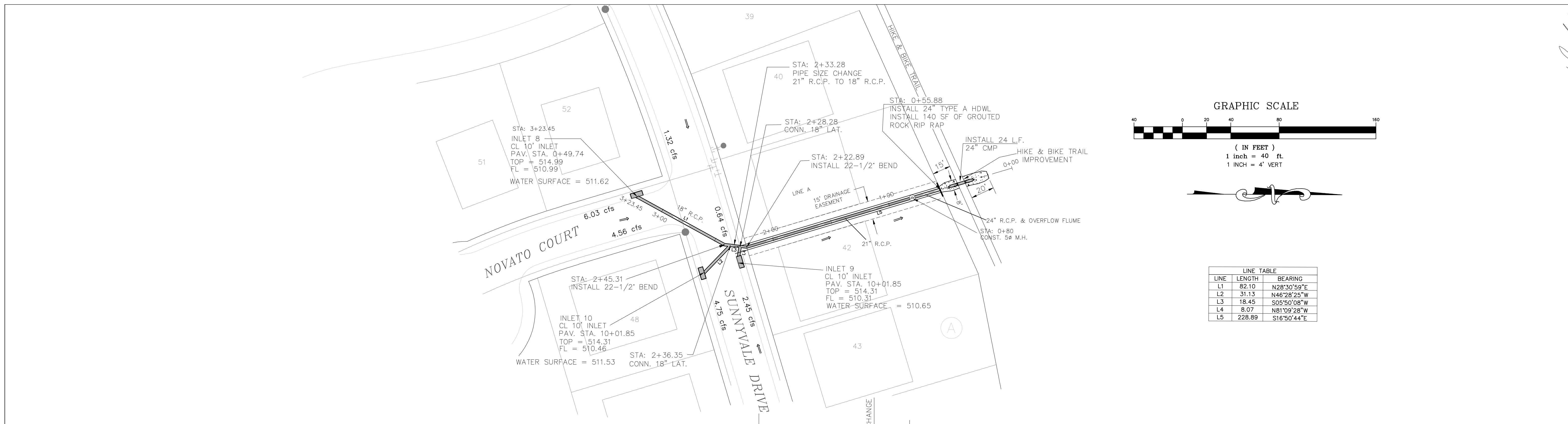
8-16-16 ADDED PIPE ENDS
 8-5-16 ADDED 6" 24" RCP AT TRAIL CROSSING REVISION

W.L.D.
 CHECKED

K.E.B.
 DRAWN

10/14
 DATE

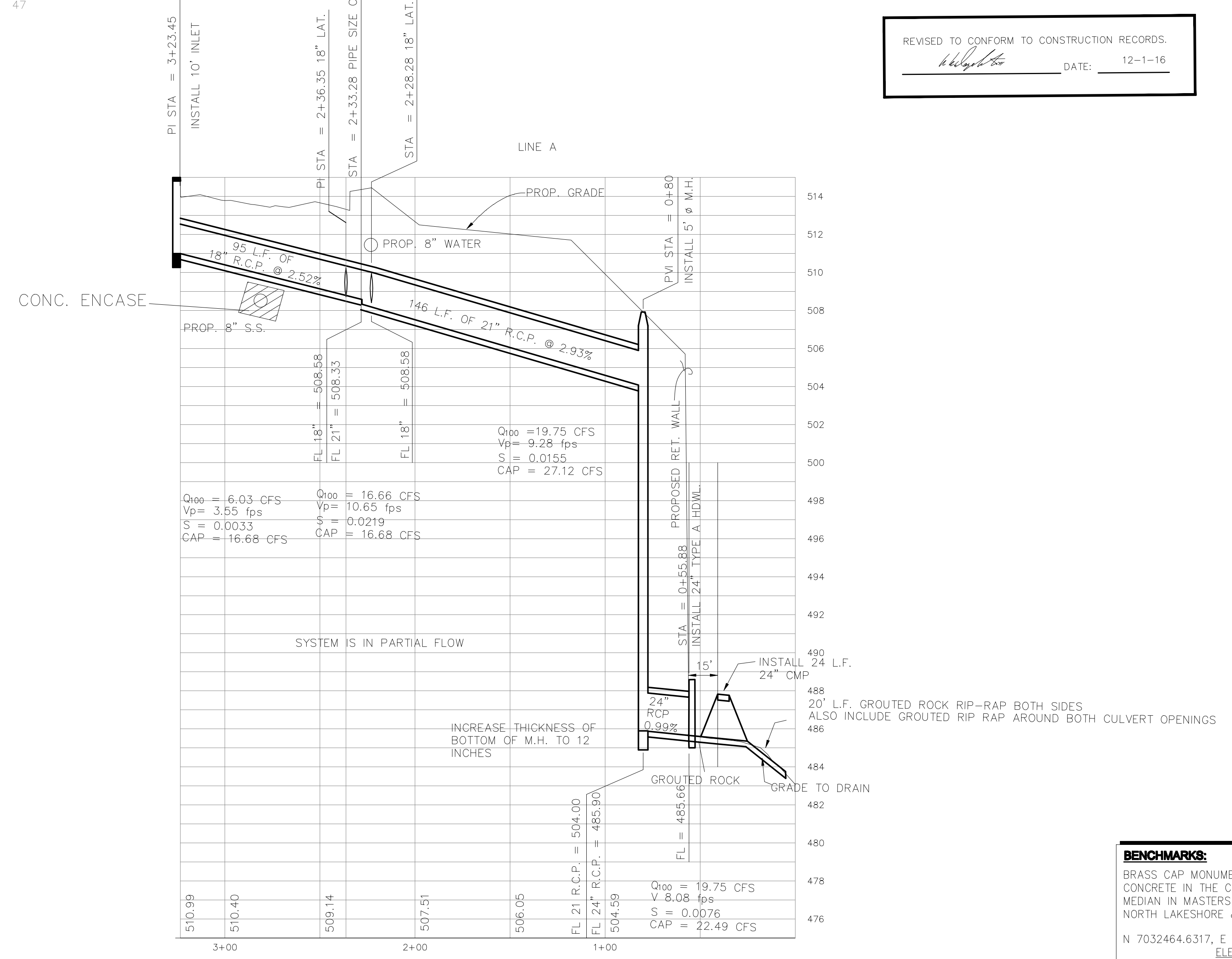
9919-4STM-1
 PROJECT



LINE	LENGTH	BEARING
L1	82.10	N28°30'59"E
L2	31.13	N46°28'23"W
L3	18.45	S05°50'08"W
L4	8.07	N81°09'28"W
L5	228.89	S16°50'44"E

REVISED TO CONFORM TO CONSTRUCTION RECORDS.
 DATE: 12-1-16

From	To	Length	Box Height	Box Width	DESIGN Q100	Pipe Size (in)	CAP Q100	FULL V	PARTIAL V	PARTIAL FLOW %	FLOW CHT. No.	Kj	Flow R(ft)	R ² /3	Flow Area	FULL S	DESIGN S	HGL Rise	HGL Number	
STM -C																			505.75	Starting= Pipe Soffit
	222.89	80	142.88		19.75	21	27.12	8.21	9.28	0.73	1.13		0.4375	0.5763	2.4053	0.0155	0.0293	2.2200	507.97	
Junction Loss	233.28	222.89	10.39		19.75	21	27.12	8.21	9.28	0.73	1.13	0.4500	0.4375	0.5763	2.4053	0.0155	0.0293	0.1614	508.71	
Junction Loss	236.35	233.28	3.07		16.66	18	16.68	9.43	9.80	0.92	1.04	1.0000	0.3750	0.5200	1.7671	0.0252	0.0252	0.3332	509.04	
Junction Loss	245.31	236.35	8.95		6.03	18	16.68	3.41	3.55	0.92	1.04	1.0000	0.3750	0.5200	1.7671	0.0033	0.0252	-1.1993	507.92	
Junction Loss	323.45	245.31	78.14		6.03	18	16.68	3.41	3.55	0.92	1.04	0.4500	0.3750	0.5200	1.7671	0.0033	0.0252	0.0994	508.05	
													0.3750	0.5200	1.7671	0.0033	0.0252	0.2575	508.30	



BENCHMARKS:
 BRASS CAP MONUMENT NO. 10 SET IN CONCRETE IN THE CENTER OF GRASS MEDIAN IN MASTERS DRIVE BETWEEN NORTH LAKESHORE & SHORES BLVD.
 N 7032464.6317, E 2589554.1518
 ELEV. = 524.62