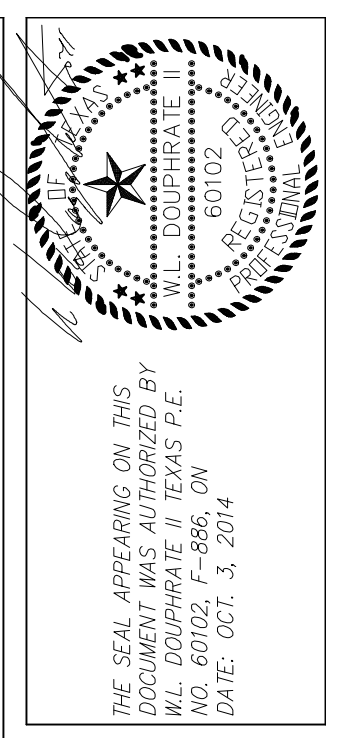


REVISED TO CONFORM TO CONSTRUCTION RECORDS.
W.L. Douphrate DATE: 12-1-16

NOTE:
 PROPOSED GRADE LINE AT PAVEMENT CROSSINGS DEPICTS PAVING SUBGRADE.

- REVISIONS:
 1. 4-23-15 SHORTENED LINE I 28.64'
- REVISIONS:
 1. 4-23-15 SHORTENED LINE I 28.64'
 2. 9-17-15 REVISED SLOPE LINE J TO 1.50% LOWERED FL OUT TO 508.27' REVISED DROP MH STA 14+10.51 LINE A TO STD STD 4' DIA MH 3. 9-23-15 CHANGED LINE I MH STA 0+00 FROM INTERNAL DROP TO STD 4' DIA MH
 3. 9-24-15 REVISED MANHOLE TOP ELEVATIONS
 4. 10-19-15 REVISED TOP MH ELEV 0+00 LN I

BENCHMARKS:
 BRASS CAP MONUMENT NO. 10 SET IN CONCRETE IN THE CENTER OF GRASS MEDIAN IN MASTERS DRIVE BETWEEN NORTH LAKESHORE & SHORES BLVD.
 N 7032464.6317, E 2589554.1518
 ELEV. = 524.62



DOUPHRATE & ASSOCIATES, INC.
 ENGINEERING • PROJECT MANAGEMENT • SURVEYING
 2235 RIDGE RD., # 200 ROCKWALL, TEXAS 75087
 PHONE: (972)771-9004 FAX: (972)771-9005

SANITARY SEWER PROFILE
 LINE I - LINE J
 LAKEVIEW SUMMIT, PHASE 4
 CITY OF ROCKWALL, ROCKWALL COUNTY, TEXAS

REVISION
W.L.D. CHECKED
K.E.B. DRAWN
10/14 DATE
9919-4SS5 PROJECT
10.5 OF