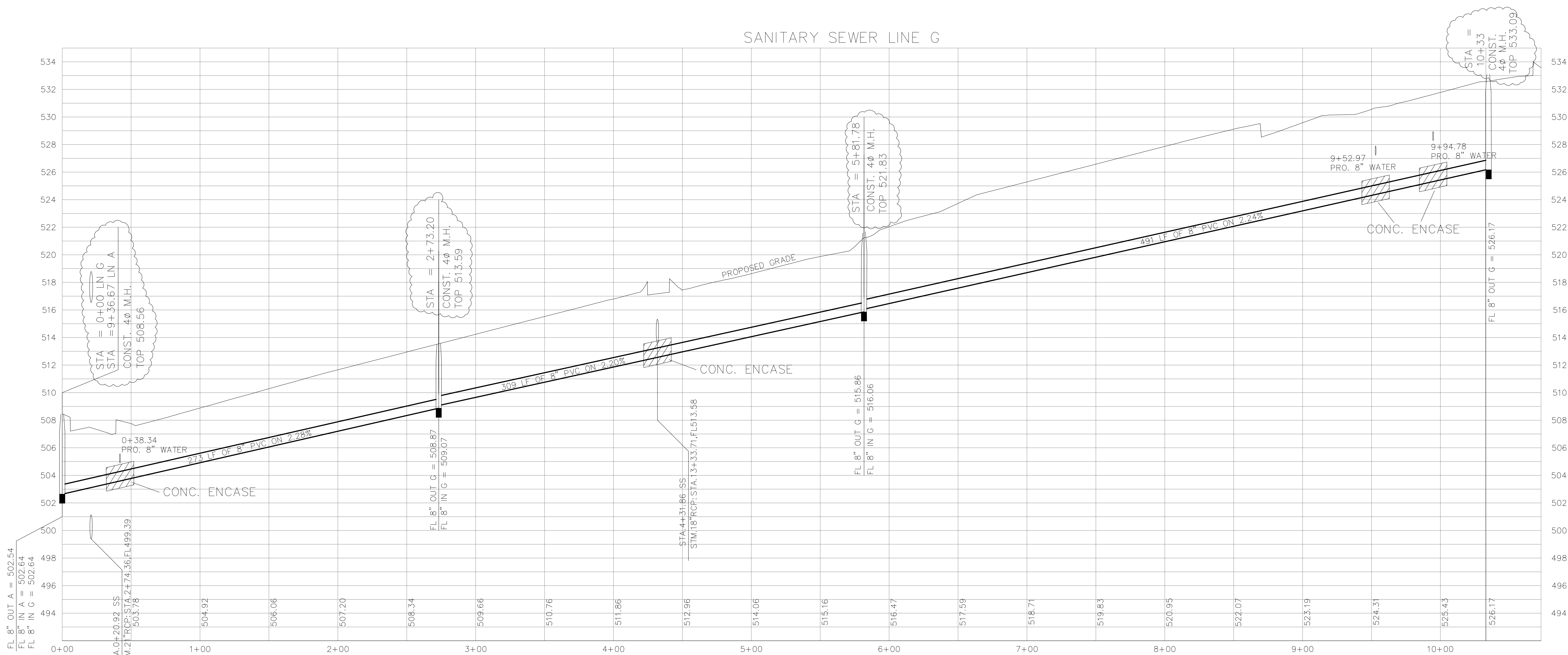
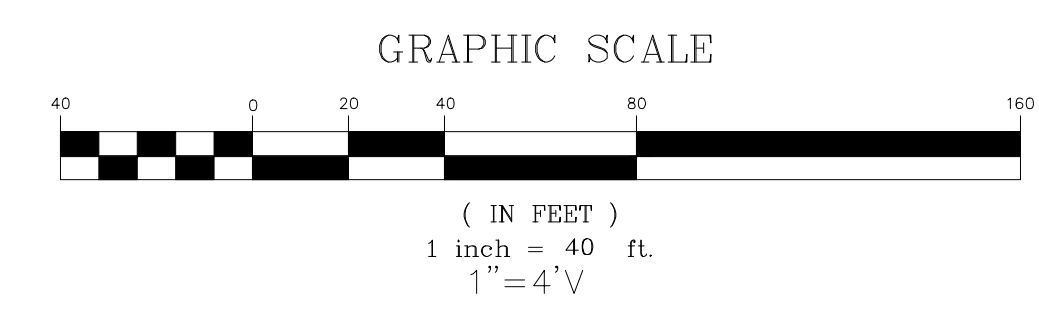
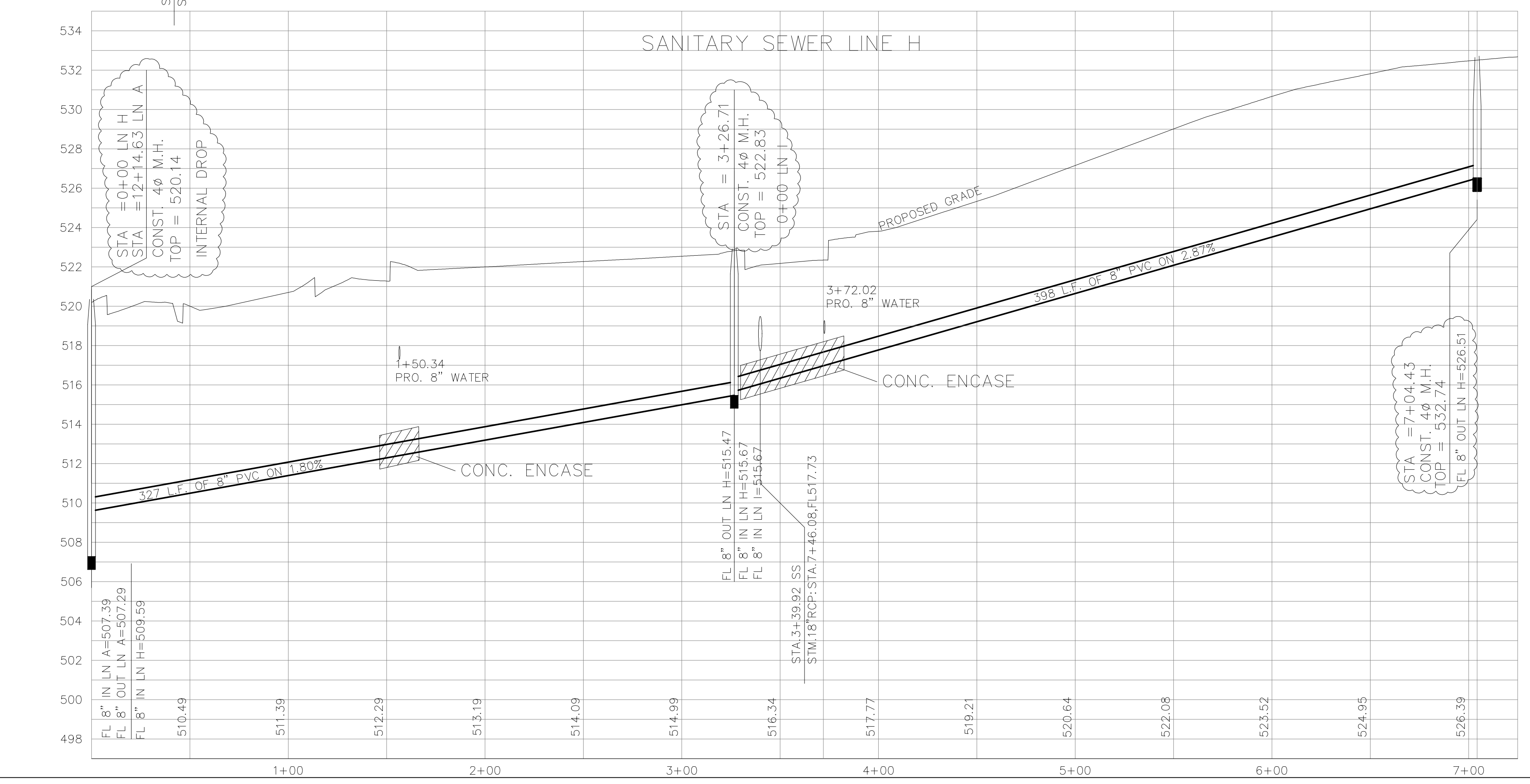


SANITARY SEWER LINE G



SANITARY SEWER LINE H

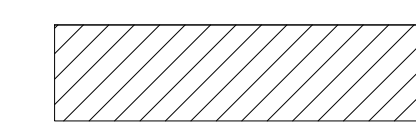


REVISED TO CONFORM TO CONSTRUCTION RECORDS.  
*W.D.* DATE: 12-1-16

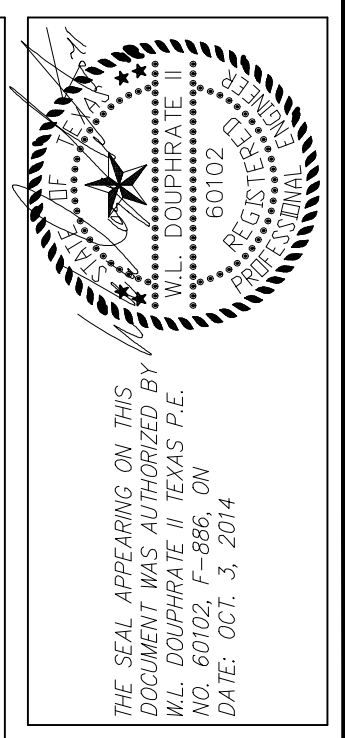
NOTE:  
 PROPOSED GRADE LINE AT PAVEMENT CROSSINGS DEPICTS PAVING SUBGRADE.

- REVISIONS:  
 1. 4-19-15 SHORTENED LINE G 40.03'  
 2. 4-24-15 SHORTENED LINE H 20.50'  
 3. 9-24-15 REVISED TOP ELEVATIONS

LEGEND

 CONCRETE ENCASEMENT

**BENCHMARKS:**  
 BRASS CAP MONUMENT NO. 10 SET IN CONCRETE IN THE CENTER OF GRASS MEDIAN IN MASTERS DRIVE BETWEEN NORTH LAKESHORE & SHORES BLVD.  
 N 7032464.6317, E 2589554.1518  
 ELEV. = 524.62



DOUPHRATE & ASSOCIATES, INC.  
 ENGINEERING • PROJECT MANAGEMENT • SURVEYING  
 2235 RIDGE RD., # 200 ROCKWALL, TEXAS 75087  
 PHONE: (972)771-9004 FAX: (972)771-9005

SANITARY SEWER PROFILE  
 LINE G - LINE H  
 LAKEVIEW SUMMIT, PHASE 4  
 CITY OF ROCKWALL, ROCKWALL COUNTY, TEXAS

REVISION
WLD. CHECKED
K.E.B. DRAWN
10/14 DATE
9919-4SS4 PROJECT
104 OF