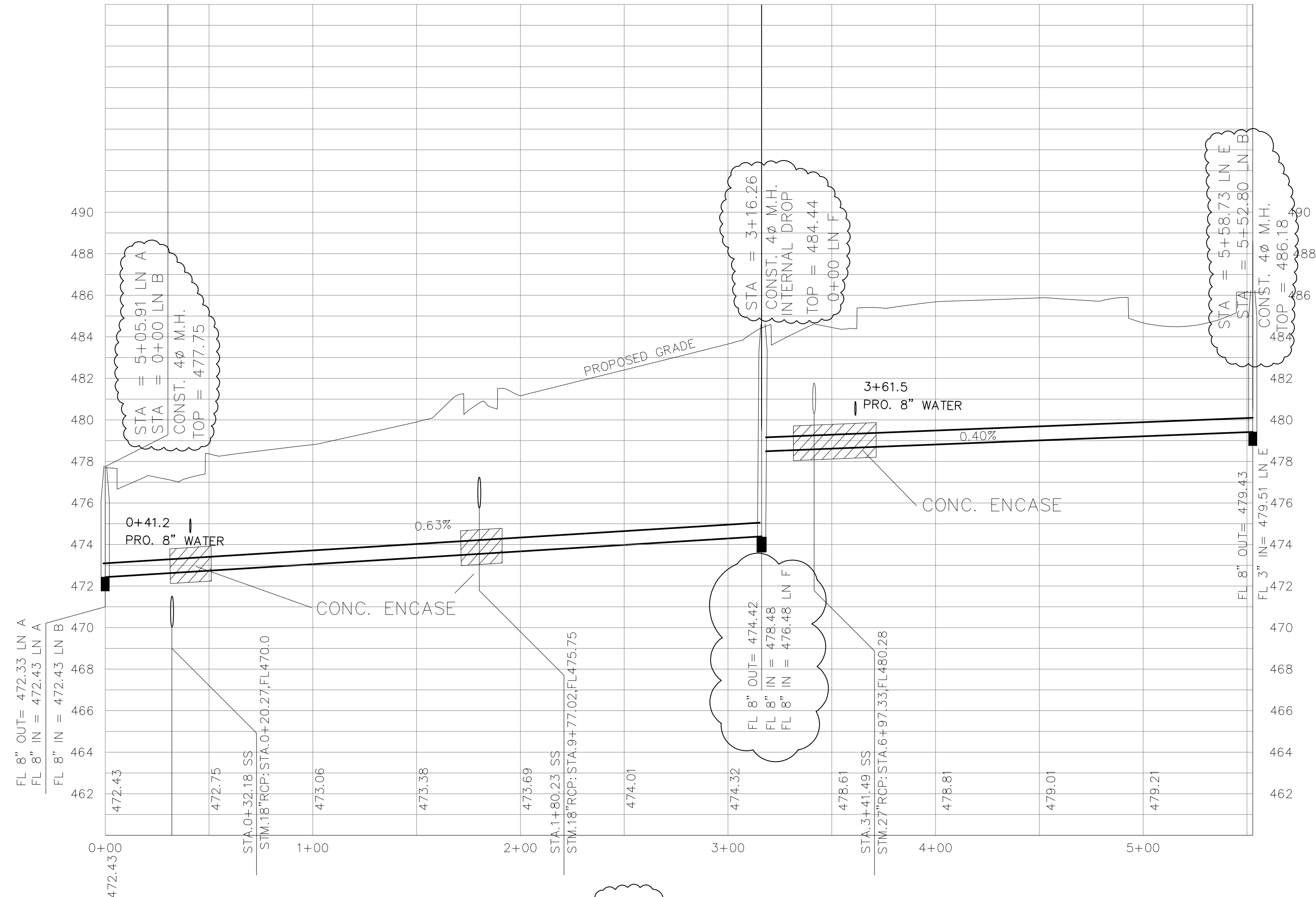
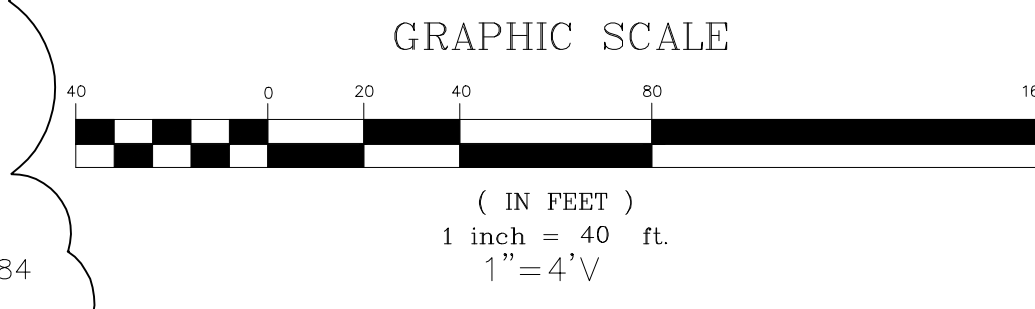
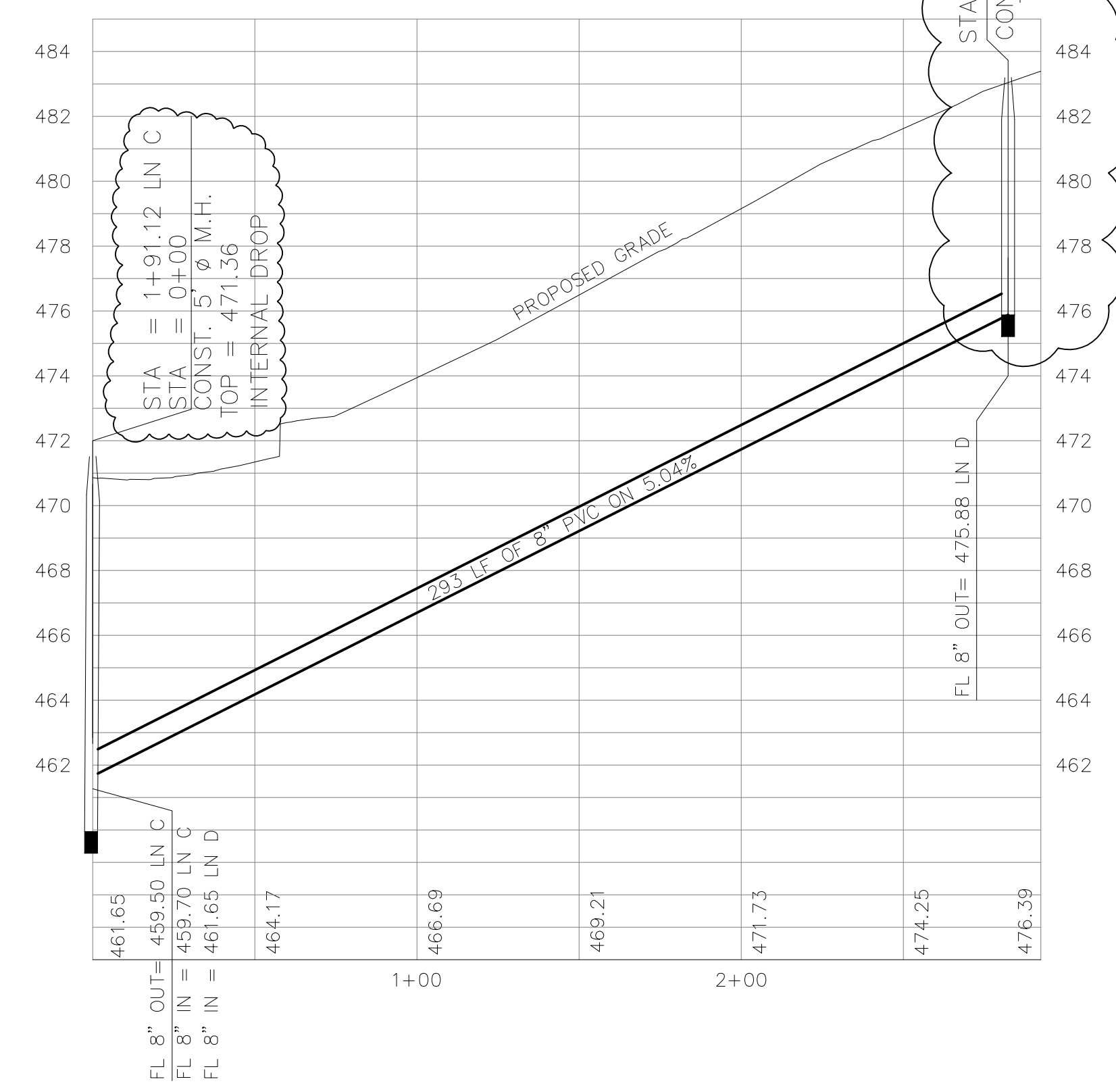


SANITARY SEWER LINE B



SANITARY SEWER LINE D

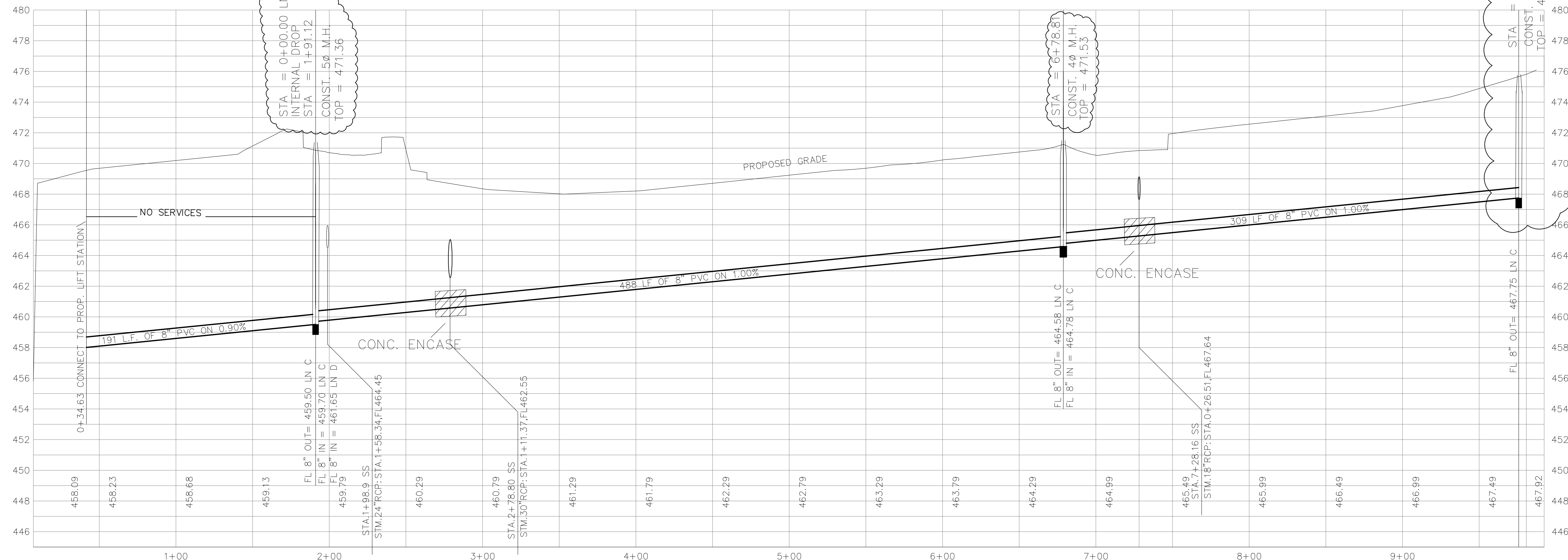


REVISED TO CONFORM TO CONSTRUCTION RECORDS.
 DATE: 12-1-16

LEGEND

CONCRETE ENCASUREMENT

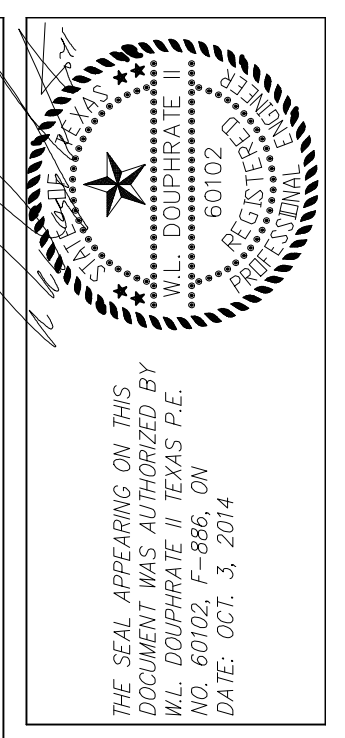
SANITARY SEWER LINE C



NOTE:
 PROPOSED GRADE LINE AT PAVEMENT CROSSINGS DEPICTS PAVING SUBGRADE.

- REVISIONS:
- 9-22-15 SHORTENED LINE D 10.10' CHANGED MH STA 2+92.38 TO 2+82.28
 - 9-23-15 SHORTENED LINE C 16.54' CHANGED MH STA 9+92.39 TO 9+75.82
 - 9-23-15 MH STA 9+75.82 LINE C ADJUSTED RM TO 476.00
 - 9-24-15 REVISED TOP ELEVATIONS
 - 10-26-15 LOWERED LINE F FL 2 FT AT LINE B MH STA 3+16.26 TO 476.46'

BENCHMARKS:
 BRASS CAP MONUMENT NO. 10 SET IN CONCRETE IN THE CENTER OF GRASS MEDIAN IN MASTERS DRIVE BETWEEN NORTH LAKESHORE & SHORES BLVD.
 N 7032464.6317, E 2589554.1518
 ELEV. = 524.62



DOUPHRATE & ASSOCIATES, INC.
 ENGINEERING • PROJECT MANAGEMENT • SURVEYING
 2235 RIDGE RD., # 200 ROCKWALL, TEXAS 75087
 PHONE: (972)771-9004 FAX: (972)771-9005

SANITARY SEWER PROFILE
 LINE B - LINE C - LINE D
 LAKEVIEW SUMMIT, PHASE 4
 CITY OF ROCKWALL, ROCKWALL COUNTY, TEXAS

REVISION	
CHECKED	W.L.D.
DRAWN	K.E.B.
DATE	10/14
PROJECT	9919-4SS2
	10.2 OF