

From	To	Length	Box Height	Width	Q100	Pipe Size (in)	V	Kj	R(R)	R ² /3	Flow Area	S	HGL Rise	HGL Number	
LINE H							2.5400							502.64	Starting
Junction Loss	+0+89.5	+0+0	3		2.16	18	1.2223	0.4000	0.3750	0.5200	1.7671	0.0004	0.1002	502.74	
LINE G														502.50	Starting
+2+30	+1+52.28	77.72		4.49	18	2.5408		1.0000	0.3750	0.5200	1.7671	0.0018	0.1420	502.64	
Junction Loss	+1+52.28	0	152.28		2.33	18	1.3185		0.3750	0.5200	1.7671	0.0005	0.0749	502.74	
LINE I							9.0400							490.02	Starting
Junction Loss	+1+78.1	77.89	100.21		14.58	18	8.2506	0.4000	0.3750	0.5200	1.7671	0.0193	1.2690	491.29	
Junction Loss	+0+77.89	+0+70.27	7.62		9.09	18	5.1439	1.0000	0.3750	0.5200	1.7671	0.0075	1.0570	494.28	
Junction Loss	+0+70.27	+0+40.25	30.02		4.48	18	2.5352	1.0000	0.3750	0.5200	1.7671	0.0018	0.4109	494.74	
Junction Loss	+0+40.25	+0+0	40.25		3.11	18	1.7599	1.0000	0.3750	0.5200	1.7671	0.0009	0.0998	494.90	

INLET 22
CONST. 4 GRATE COMBO. INLET
CL INLET = PAV: 0+29.88
TOP = 513.43
FL 18" = 509.43
Q 100 = 2.33

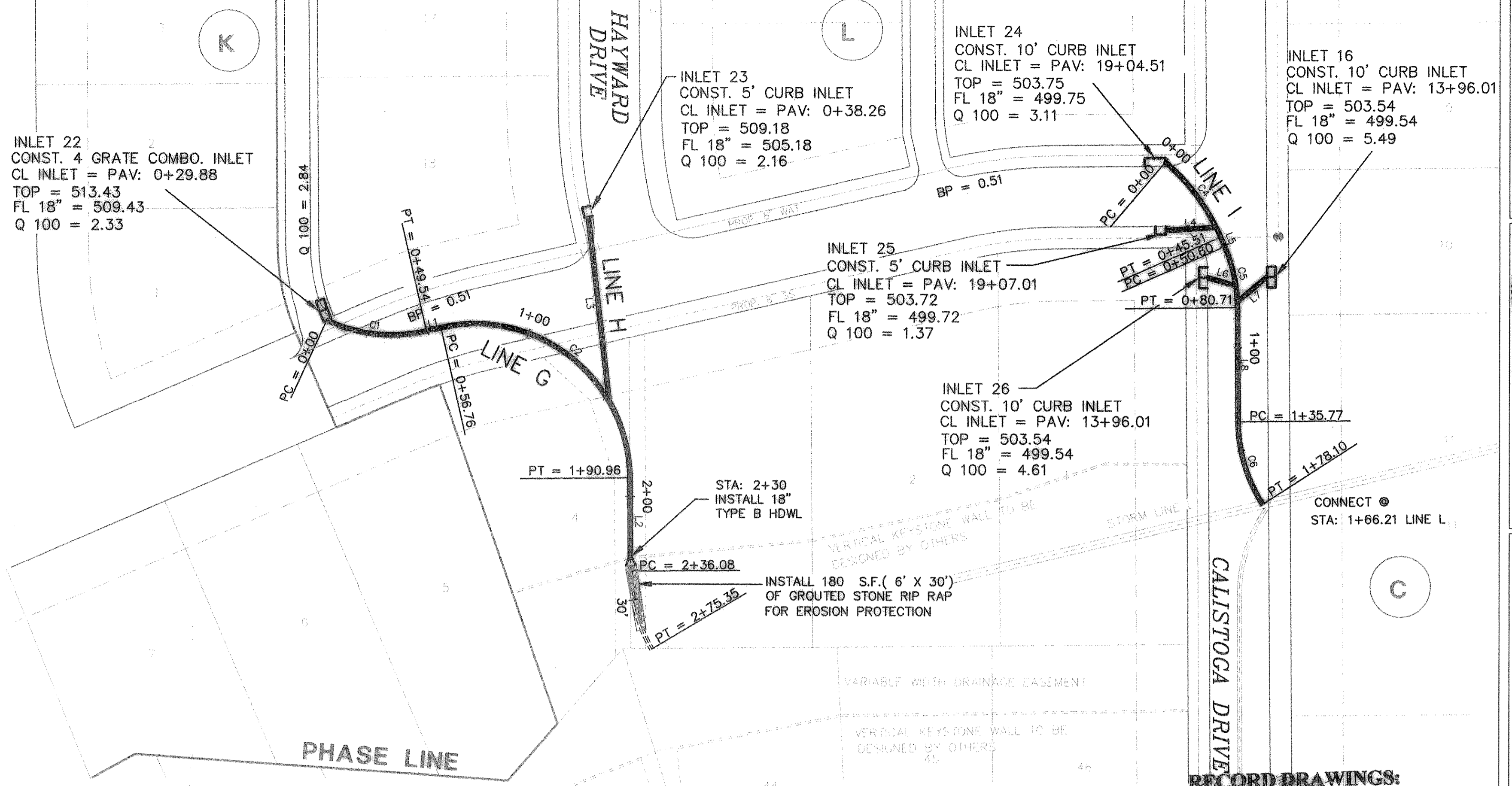
INLET 23
CONST. 5' CURB INLET
CL INLET = PAV: 0+38.26
TOP = 509.18
FL 18" = 505.18
Q 100 = 2.16

INLET 24
CONST. 10' CURB INLET
CL INLET = PAV: 19+04.51
TOP = 503.75
FL 18" = 499.75
Q 100 = 3.11

INLET 16
CONST. 10' CURB INLET
CL INLET = PAV: 13+96.01
TOP = 503.54
FL 18" = 499.54
Q 100 = 5.49

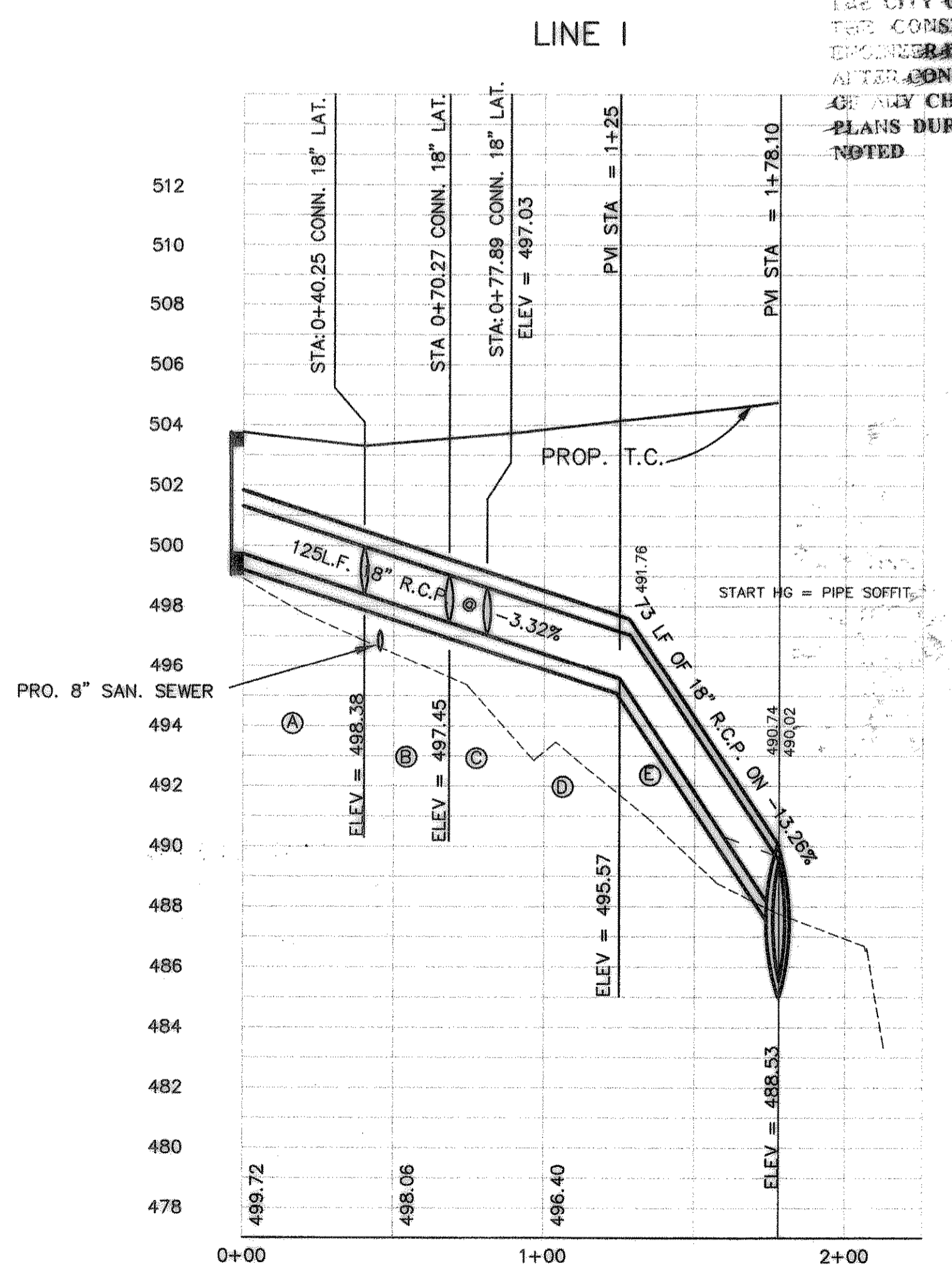
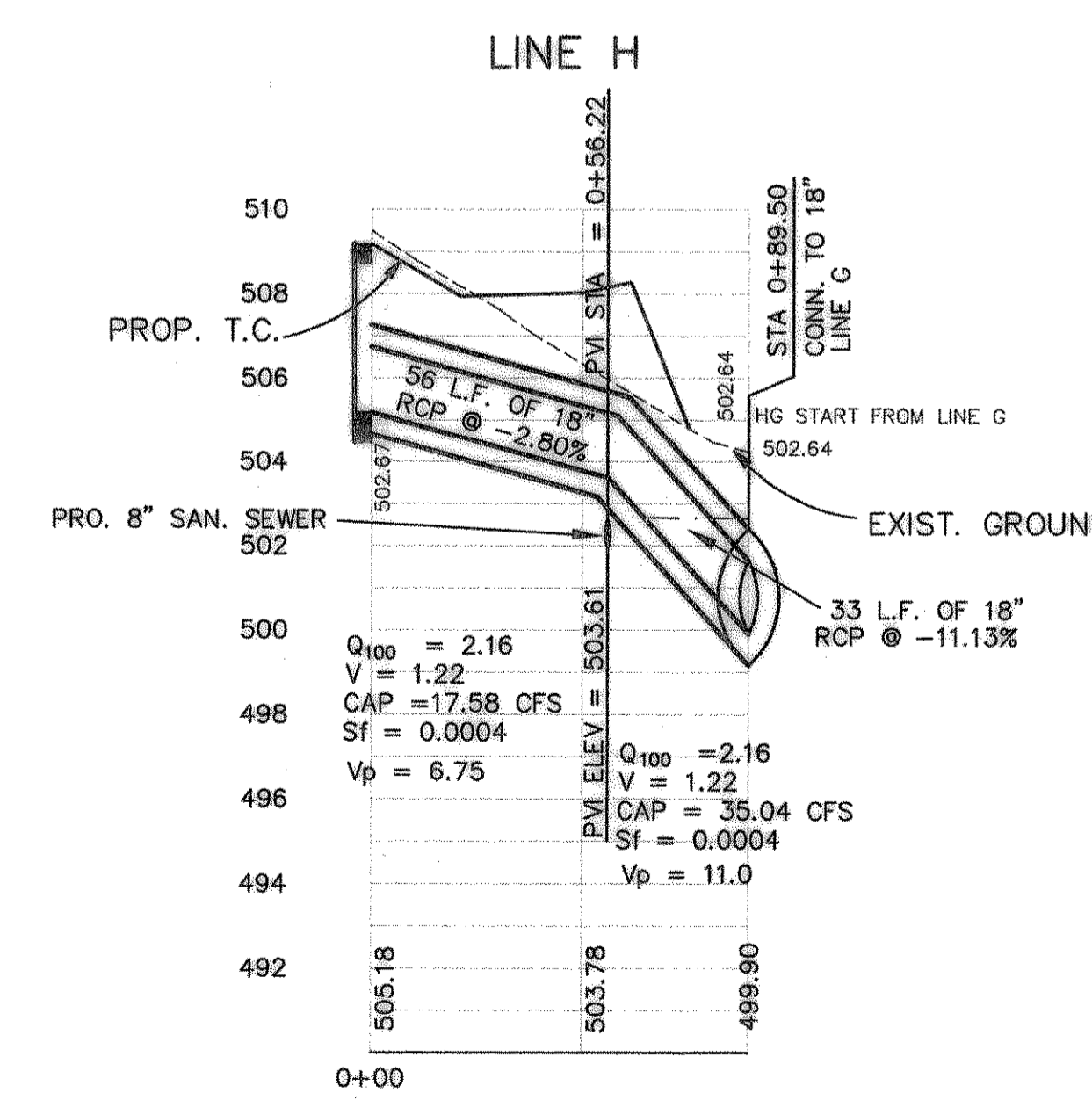
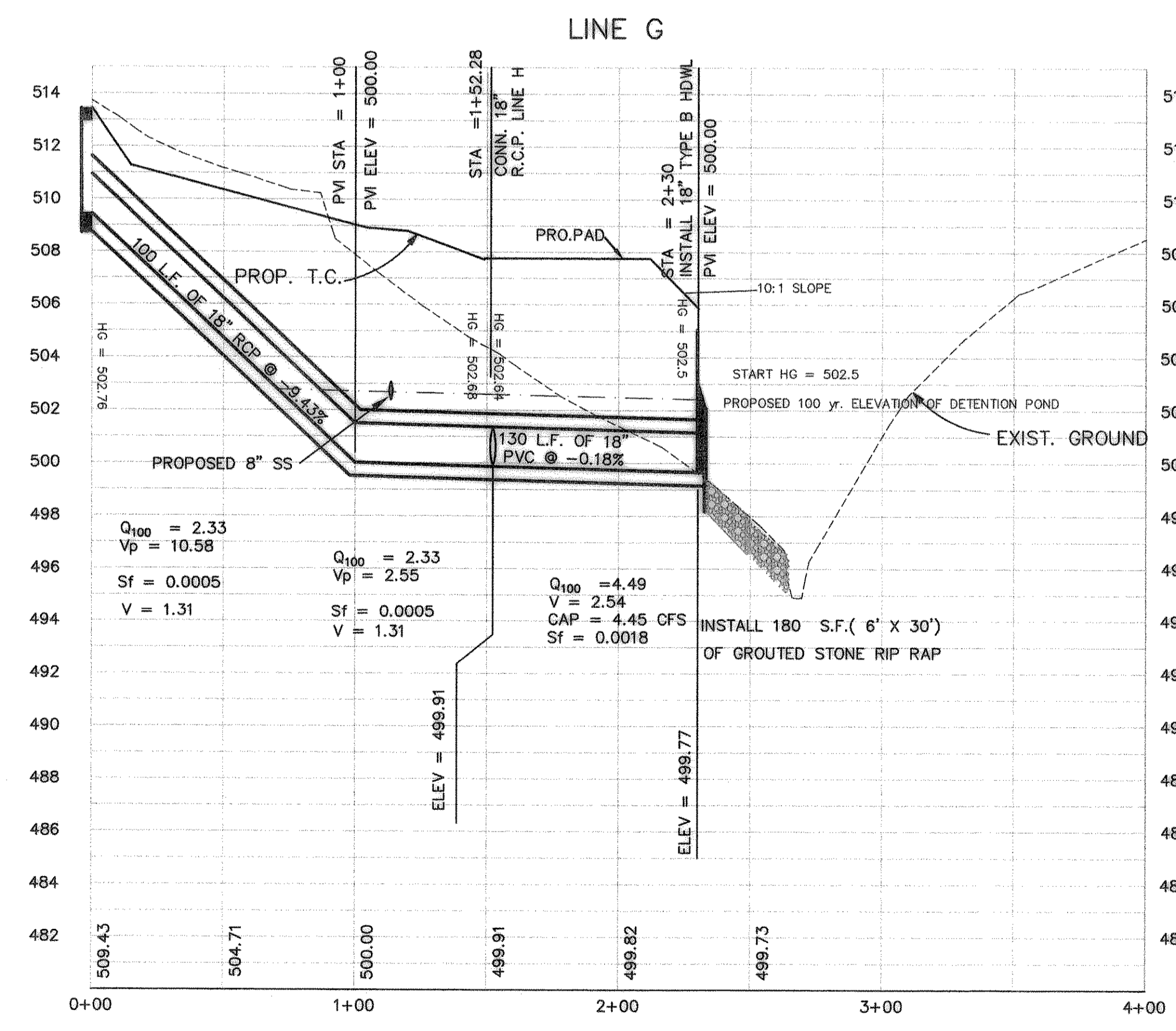
INLET 25
CONST. 5' CURB INLET
CL INLET = PAV: 19+07.01
TOP = 503.72
FL 18" = 499.72
Q 100 = 1.37

INLET 26
CONST. 10' CURB INLET
CL INLET = PAV: 13+96.01
TOP = 503.54
FL 18" = 499.54
Q 100 = 4.61



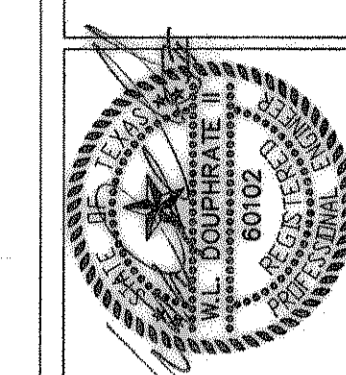
LINE	LENGTH	BEARING
L1	7.22'	N78°59'33"E
L2	45.12'	N00°29'00"W
L3	89.80'	S06°39'56"E
L4	24.40'	N86°28'18"E
L5	5.09'	S23°29'20"E
L6	14.37'	S73°57'23"E
L7	18.84'	S50°19'03"W
L8	55.06'	S00°29'00"E

CURVE	LENGTH	RADIUS	TANGENT	CH BRG	CH DIST	DELTA
C1	48.54	75.00	25.71	S84°05'06"E	48.64	37°50'45"
C2	134.20	75.00	93.49	N51°44'44"W	117.00	102°31'27"
C4	45.51	100.00	23.16	N36°31'35"W	45.12	28°34'29"
C5	30.11	75.00	15.26	N11°59'10"W	29.91	23°00'20"
C6	42.33	75.00	21.75	S16°39'12"E	41.77	32°20'23"



- (A) Q100 = 3.11
Vp = 7.86
CAP = 19.14 CFS
Sf = 0.0009
V = 1.76
- (B) Q100 = 4.48
Vp = 8.54
CAP = 19.14 CFS
Sf = 0.0018
V = 2.53
- (C) Q100 = 9.09
Vp = 10.69
CAP = 19.14 CFS
Sf = 0.0075
V = 5.14
- (D) Q100 = 14.58
Vp = 11.9
CAP = 19.14 CFS
Sf = 0.0193
V = 8.25
- (E) Q100 = 14.58
Vp = 8.25
CAP = 20.18 FPS
Sf = 0.0193

RECORD DRAWINGS:
THE INTENT OF THE OWNER AND ENGINEER WAS TO CONSTRUCT THESE FACILITIES ACCORDING TO THESE PLANS AS APPROVED BY THE CITY OF Rockwall. THE LINES AND GRADES WERE SET ON THE GROUND FOR CONSTRUCTION ACCORDING TO SAID PLANS. THE CITY OF Rockwall INSPECTED THE CONSTRUCTION. THE OWNER NOR ENGINEER DID NOT VERIFY LINES OR GRADES AFTER CONSTRUCTION. WE ARE NOT AWARE OF ANY CHANGES OR REVISIONS TO THESE PLANS DURING CONSTRUCTION EXCEPT AS NOTED.



DOUPHRATE & ASSOCIATES, INC.
ENGINEERING • PROJECT MANAGEMENT • SURVEYING
2251 RIDGE RD., # 200 ROCKWALL, TEXAS 75087
PHONE: (972)771-8004 FAX: (972)771-8005

**STORM SEWER PLAN & PROFILE
LINES G, H & I
LAKEVIEW SUMMIT, PHASE ONE
CITY OF ROCKWALL, ROCKWALL COUNTY, TEXAS**

REVISION	W.L.D.
CHECKED	K.E.B.
DRAWN	
DATE	1/31/00
PROJECT	9919 STMD
	36 OF 42