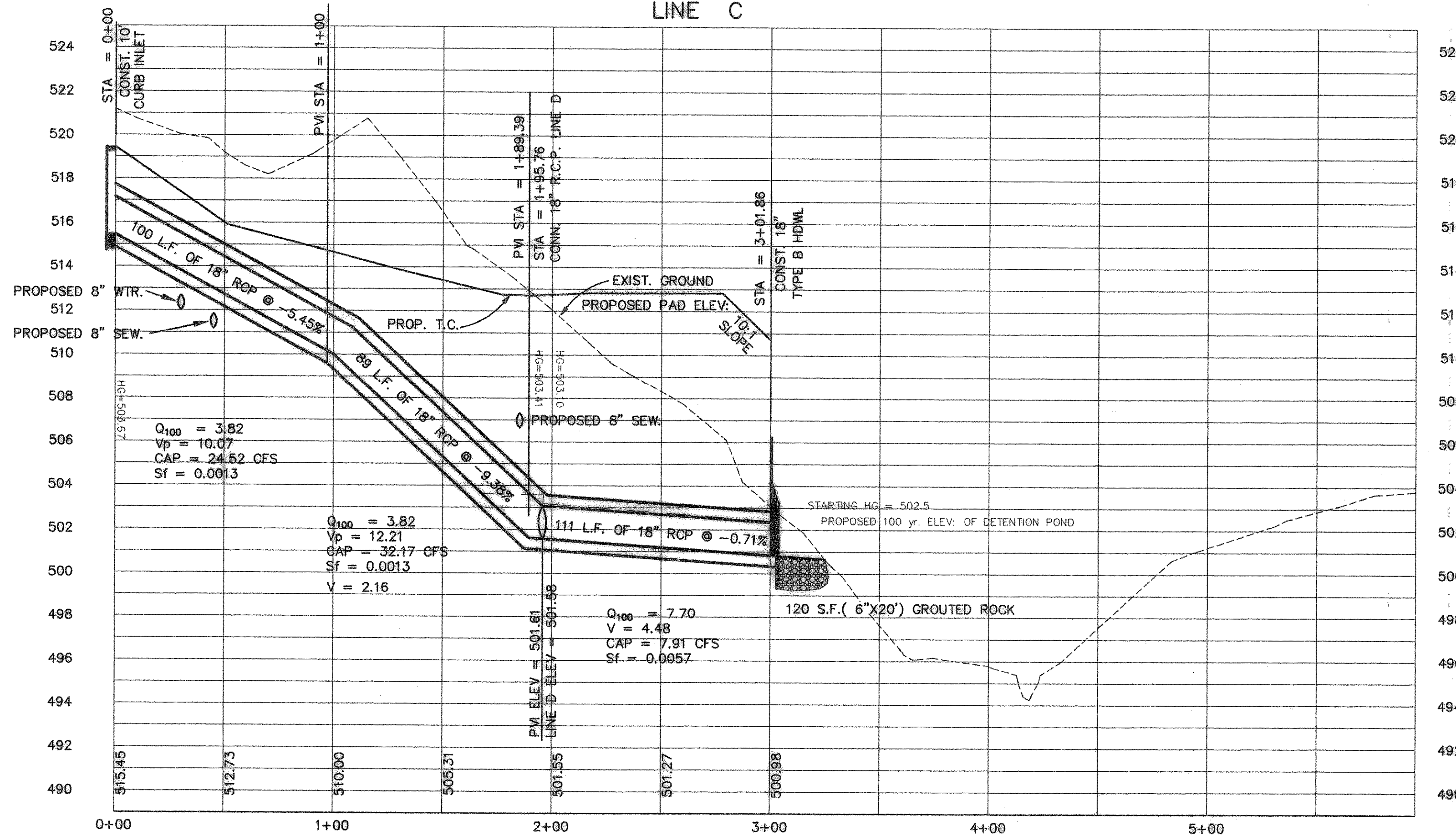
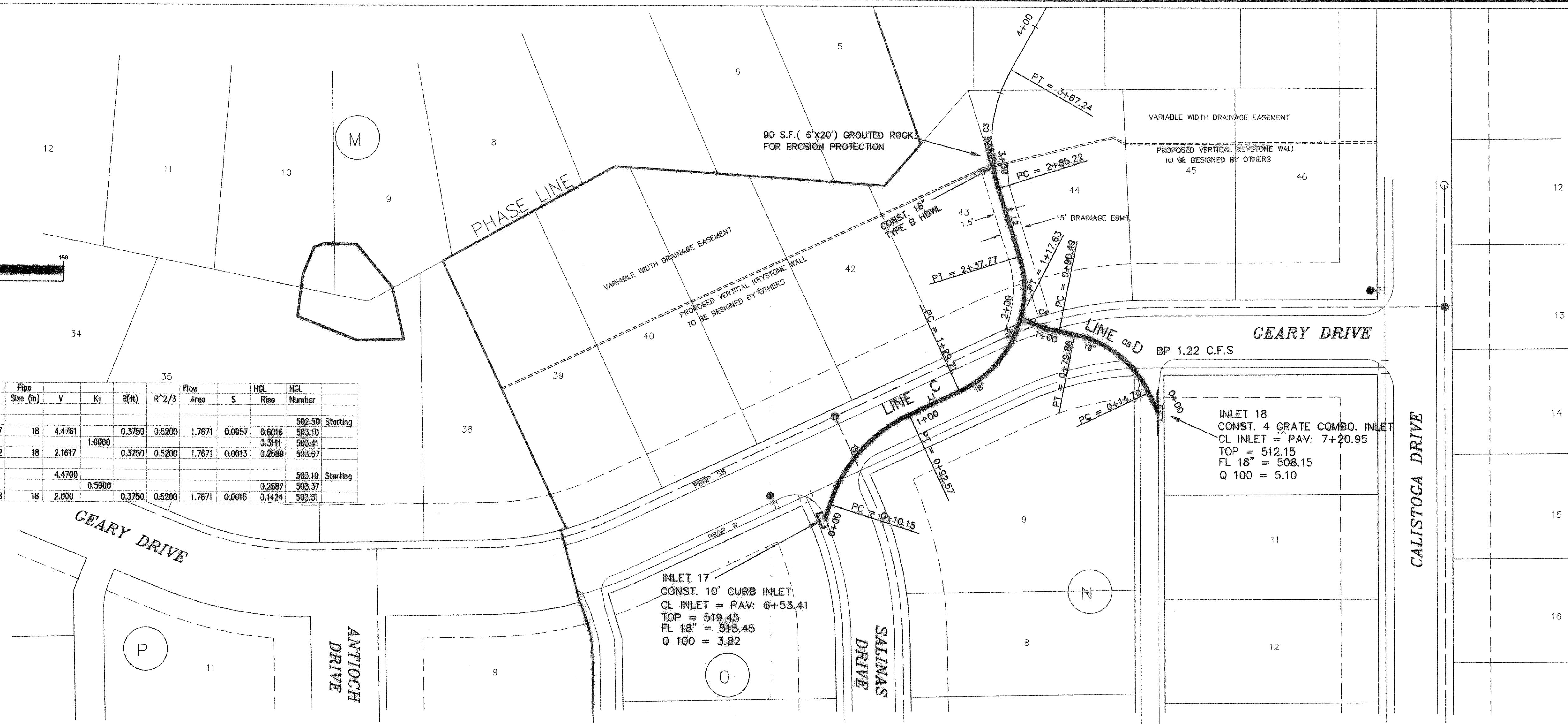
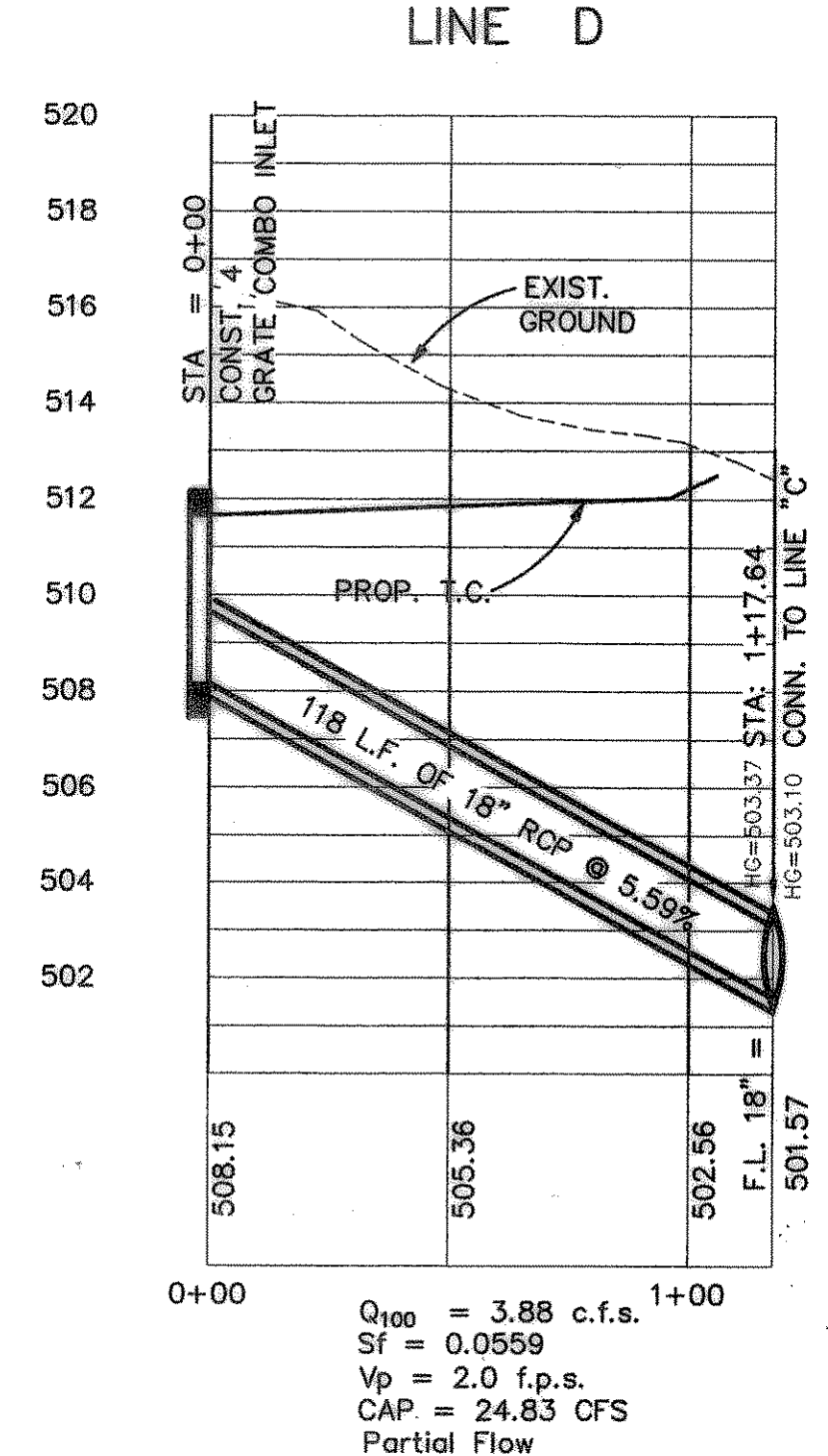


From	To	Length	Box Height	Width	Q100	Pipe Size (in)	V	Kj	R(ft)	R <sup>2</sup> /3	Flow Area	S	HGL Rise	HGL Number
LINE C														
3+01.86	1+95.76	106.1		7.7	18	4.4761			0.3750	0.5200	1.7671	0.0057	0.6016	502.50 Starting
Junction Loss	1+95.76	0+00	195.76		3.82	18	2.1617	1.0000	0.3750	0.5200	1.7671	0.0013	0.2589	503.41
LINE D														
Junction Loss	117.63	0	117.63		3.88	18	2.000	0.5000	0.3750	0.5200	1.7671	0.0015	0.1424	503.51

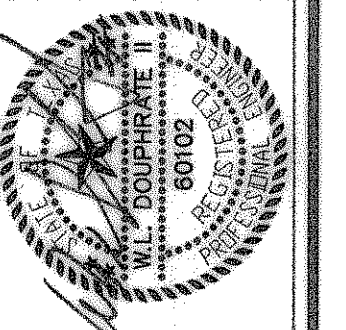


CURVE	LENGTH	RADIUS
C1	82.41	100.00
C2	108.06	75.00
C3	82.02	100.00
C4	27.14	100.00
C5	65.16	70.00

LINE	LENGTH	BEARING
L1	37.14'	S65°00'17"W
L2	47.45'	S17°32'52"E
L4	9.10'	N78°50'25"W



**RECORD DRAWINGS:**  
 THE INTENT OF THE OWNER AND ENGINEER WAS TO CONSTRUCT THESE FACILITIES ACCORDING TO THESE PLANS AS APPROVED BY THE CITY OF Rockwall. THE LINES AND GRADES WERE SET ON THE GROUND FOR CONSTRUCTION ACCORDING TO SAID PLANS. THE CITY OF Rockwall INSPECTED THE CONSTRUCTION. THE OWNER NOR ENGINEER DID NOT VERIFY LINES OR GRADES AFTER CONSTRUCTION. WE ARE NOT AWARE OF ANY CHANGES OR REVISIONS TO THESE PLANS DURING CONSTRUCTION EXCEPT AS NOTED



THE SEAL APPEARING ON THIS DOCUMENT WAS AUTHORIZED BY W.L. DOUPRATE II, TEXAS P.E. NO. 60102 ON 7/19/00

**DOUPRATE & ASSOCIATES, INC.**  
 ENGINEERING • PROJECT MANAGEMENT • SURVEYING  
 2235 RIDGE RD., # 200 ROCKWALL, TEXAS 75087  
 PHONE: (972)771-9004 FAX: (972)771-9005

**STORM SEWER PLAN & PROFILE**  
**LINES C & D**  
 LAKEVIEW SUMMIT, PHASE ONE  
 CITY OF ROCKWALL, ROCKWALL COUNTY, TEXAS

1. REVISED AS PER CITY OF ROCKWALL REVISIONS 7/8/00

REVISION	BY	DATE
W.L.D. CHECKED		
K.E.B. DRAWN		
1/29/00		
9919 STMB		
PROJECT		