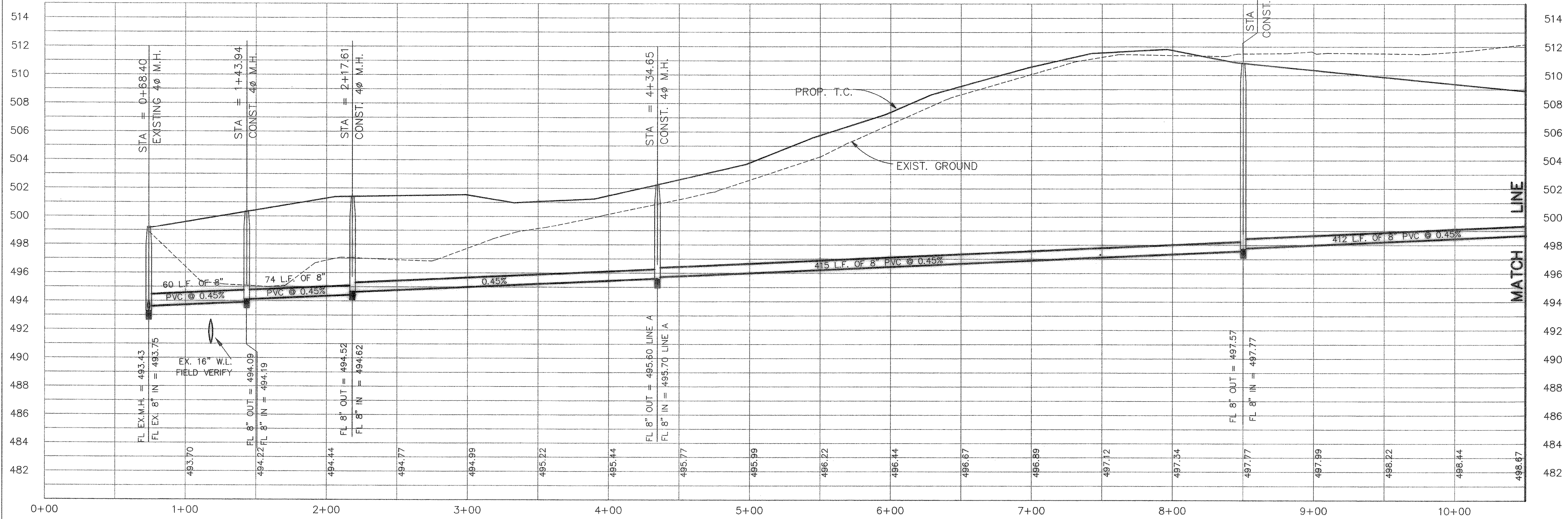
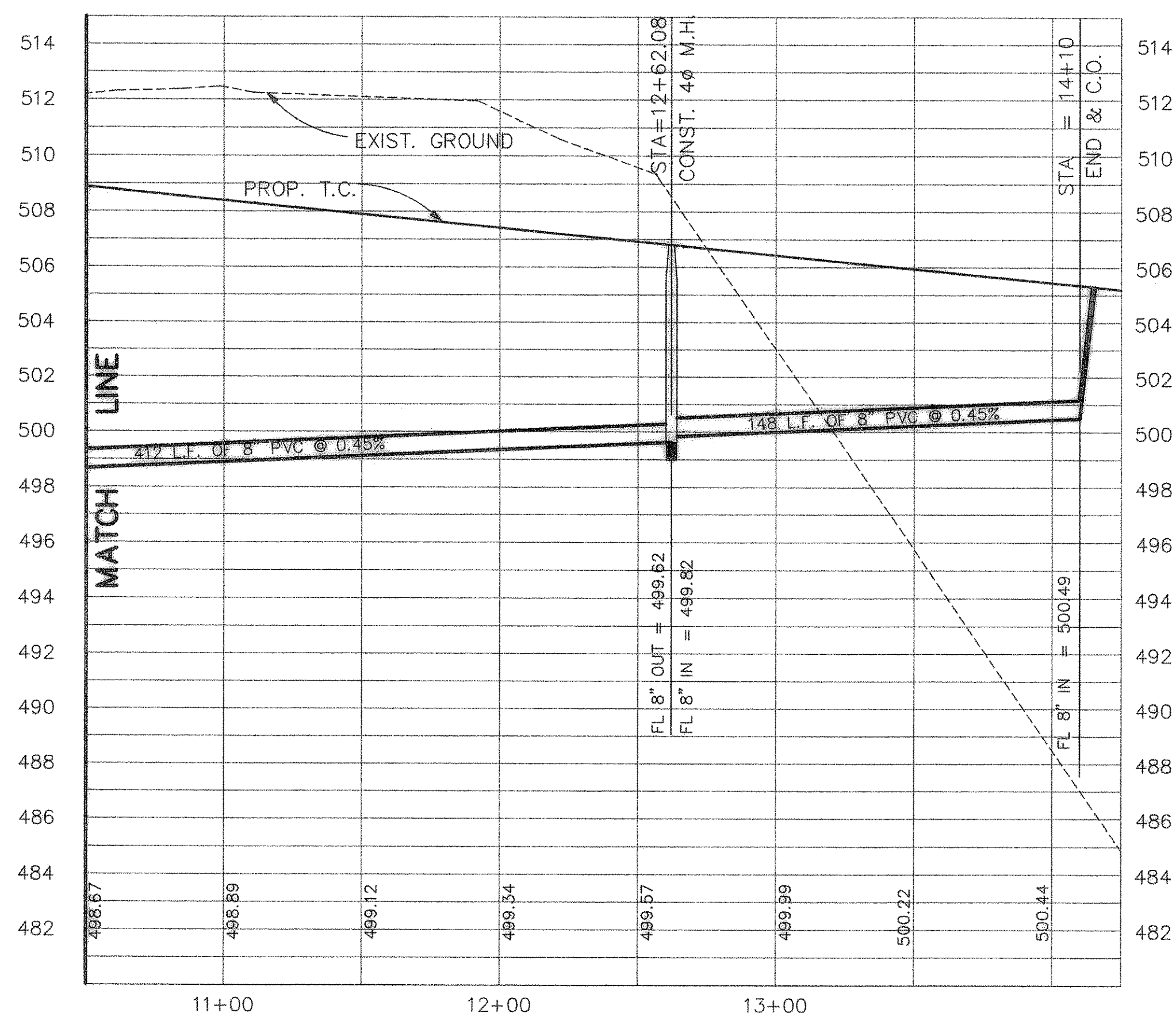


SANITARY SEWER LINE A



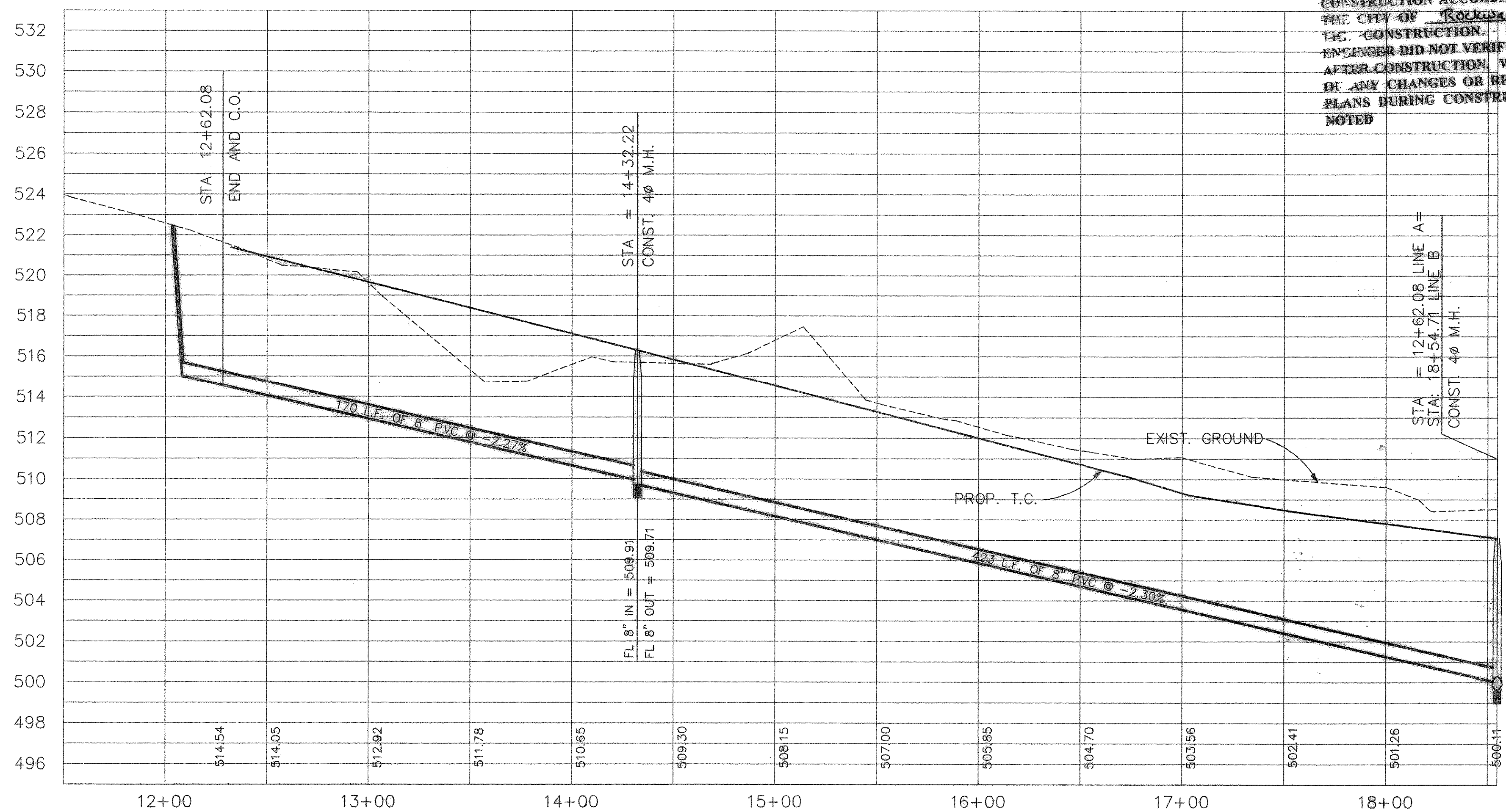
MATCH LINE

SANITARY SEWER LINE A



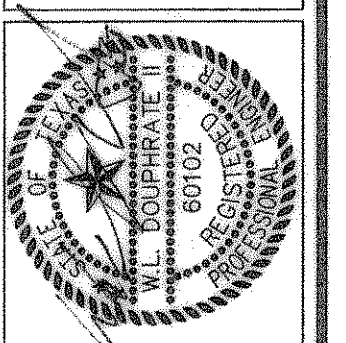
MATCH LINE

SANITARY SEWER LINE B



RECORD DRAWINGS:

THE INTENT OF THE OWNER AND ENGINEER WAS TO CONSTRUCT THESE FACILITIES ACCORDING TO THESE PLANS AS APPROVED BY THE CITY OF Rockwall. THE LINES AND GRADES WERE SET ON THE GROUND FOR CONSTRUCTION ACCORDING TO SAID PLANS. THE CITY OF Rockwall INSPECTED THE CONSTRUCTION. THE OWNER NOR ENGINEER DID NOT VERIFY LINES OR GRADES AFTER CONSTRUCTION. WE ARE NOT AWARE OF ANY CHANGES OR REVISIONS TO THESE PLANS DURING CONSTRUCTION EXCEPT AS NOTED



THE SEAL APPEARING ON THIS DOCUMENT WAS AUTHORIZED BY W.L. DOUPHRATE II, TEXAS P.E. NO. 60102 ON 6/1/06

DOUPHRATE & ASSOCIATES, INC.
ENGINEERING • PROJECT MANAGEMENT • SURVEYING
2231 RIDGE RD. # 200 ROCKWALL, TEXAS 75087
PHONE: (972)771-9004 FAX: (972)771-9005

**SANITARY SEWER PROFILE
LINES A & B
LAKEVIEW SUMMIT, PHASE ONE
CITY OF ROCKWALL, ROCKWALL COUNTY, TEXAS**

REVISION	
CHECKED	W.L.D.
DRAWN	K.E.B.
DATE	2/8/00
PROJECT	9919 SSP
	30A OF 42