

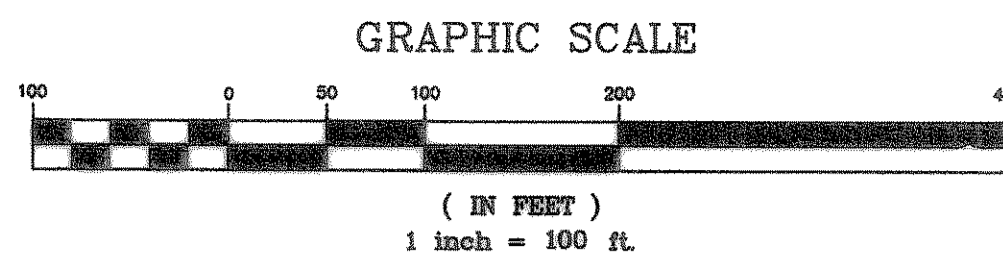
VICINITY MAP
N.T.S.

CURVE	LENGTH	RADIUS	TANGENT	CH BRG	CH DIST	DELTA
C1	135.14	250.00	69.27	N75°36'36"W	133.50	30°58'20"
C2	14.01	50.00	7.05	N09°07'28"W	13.97	16°03'25"
C3	3.55	200.00	1.78	N74°37'50"E	3.55	01°01'04"
C4	17.35	250.00	8.68	S68°35'13"W	17.35	03°58'37"
C5	186.67	370.00	95.37	N13°58'13"E	184.70	28°54'25"
C6	43.32	108.30	21.95	N11°56'33"W	43.03	22°55'06"
C7	111.97	325.00	56.55	N08°52'19"E	111.42	19°44'25"
C8	32.23	225.00	16.14	S75°21'40"E	32.20	8°12'23"
C9	164.00	283.00	84.37	S87°51'34"E	161.71	33°12'11"
C10	94.75	275.00	47.85	S08°52'19"W	94.28	19°44'25"
C12	115.54	225.00	59.07	S76°17'14"E	114.27	29°25'19"
C13	27.36	85.00	13.80	S08°44'12"W	27.24	18°26'24"
C17	8.76	975.00	4.38	N00°44'27"W	8.76	00°30'54"
C20	49.18	225.00	24.69	S06°44'44"E	49.08	12°31'27"

CURVE	LENGTH	RADIUS	TANGENT	CH BRG	CH DIST	DELTA
C1	184.38	350.00	94.38	N14°43'18"E	182.26	30°11'00"
C2	71.83	250.00	36.17	S82°08'19"E	71.59	16°27'46"
C3	75.00	250.00	37.78	N82°30'06"W	74.72	17°11'19"
C4	75.88	270.00	38.19	N83°02'40"W	75.63	16°06'10"
C5	202.66	250.00	107.27	N86°24'24"E	197.15	48°26'49"
C6	173.92	300.00	89.48	S59°47'30"W	171.50	33°13'01"
C7	93.85	225.00	47.62	N13°02'44"W	93.17	23°53'56"
C8	39.80	225.00	19.95	N70°04'19"E	39.75	10°08'05"
C9	96.70	225.00	49.11	S77°19'02"W	95.96	24°37'31"
C10	144.88	250.00	74.54	S87°51'34"E	142.86	33°12'11"
C11	103.36	300.00	52.20	S08°52'19"W	102.85	19°44'25"
C12	115.54	225.00	59.07	S76°17'14"E	114.27	29°25'19"
C13	27.36	85.00	13.80	S08°44'12"W	27.24	18°26'24"
C14	114.00	225.00	58.25	S14°01'54"W	112.78	29°01'48"
C15	11.48	300.00	5.74	N62°40'21"W	11.48	02°11'33"
C16	181.63	360.00	92.79	S13°58'13"W	179.71	28°54'25"
C17	8.76	975.00	4.38	N00°44'27"W	8.76	00°30'54"
C18	39.32	98.30	19.93	S11°56'33"E	39.06	22°55'06"
C19	49.89	275.00	25.01	S71°47'43"W	49.82	10°23'39"
C20	49.18	225.00	24.69	S06°44'44"E	49.08	12°31'27"
C21	49.18	225.00	24.69	S83°15'16"W	49.08	12°31'27"
C22	5.89	2975.00	2.94	N00°25'36"W	5.89	00°06'48"

LINE	LENGTH	BEARING
L1	50.00'	N23°24'06"W
L2	54.91'	N88°54'14"E
L3	21.75'	N17°09'11"W
L4	50.00'	N14°51'38"W
L5	36.70'	N41°01'43"E
L6	37.00'	S66°35'54"W
L7	39.33'	S56°59'00"W
L8	25.85'	S19°53'12"W
L9	60.40'	S21°44'28"W
L10	37.58'	S64°25'35"W
L11	67.17'	N69°09'31"E
L12	67.36'	S13°36'00"E
L13	50.00'	N18°44'32"E
L14	4.79'	N28°25'25"E
L15	4.56'	N61°34'35"W
L16	10.52'	N62°40'21"W
L17	8.39'	N61°34'35"W
L18	50.00'	N28°25'25"E
L20	94.67'	S63°56'51"E
L21	50.65'	N00°59'54"W
L22	49.72'	N18°44'32"E
L23	9.50'	N71°15'28"W
L24	97.36'	N71°15'28"W
L25	6.05'	N75°32'21"E
L26	6.05'	S75°32'21"W
L27	37.86'	N71°15'28"W
L28	41.72'	S18°44'32"W
L29	76.18'	S00°59'54"E
L30	160.45'	S63°56'51"E

LINE	LENGTH	BEARING
L1	36.08'	N29°48'48"E
L2	17.00'	N89°37'48"E
L3	34.20'	N24°59'43"W
L4	97.36'	S71°15'28"E
L5	6.05'	N75°32'21"E
L6	74.72'	N18°44'32"E
L8	52.32'	N89°00'06"E
L9	38.05'	N17°57'24"E
L10	25.00'	N28°32'48"E
L11	29.79'	N28°25'25"E
L12	25.00'	S23°24'06"E
L13	37.00'	S66°35'54"W
L14	35.91'	S13°00'27"E
L15	39.67'	S13°00'27"E
L16	55.01'	N17°09'11"W
L17	14.08'	S76°24'00"W

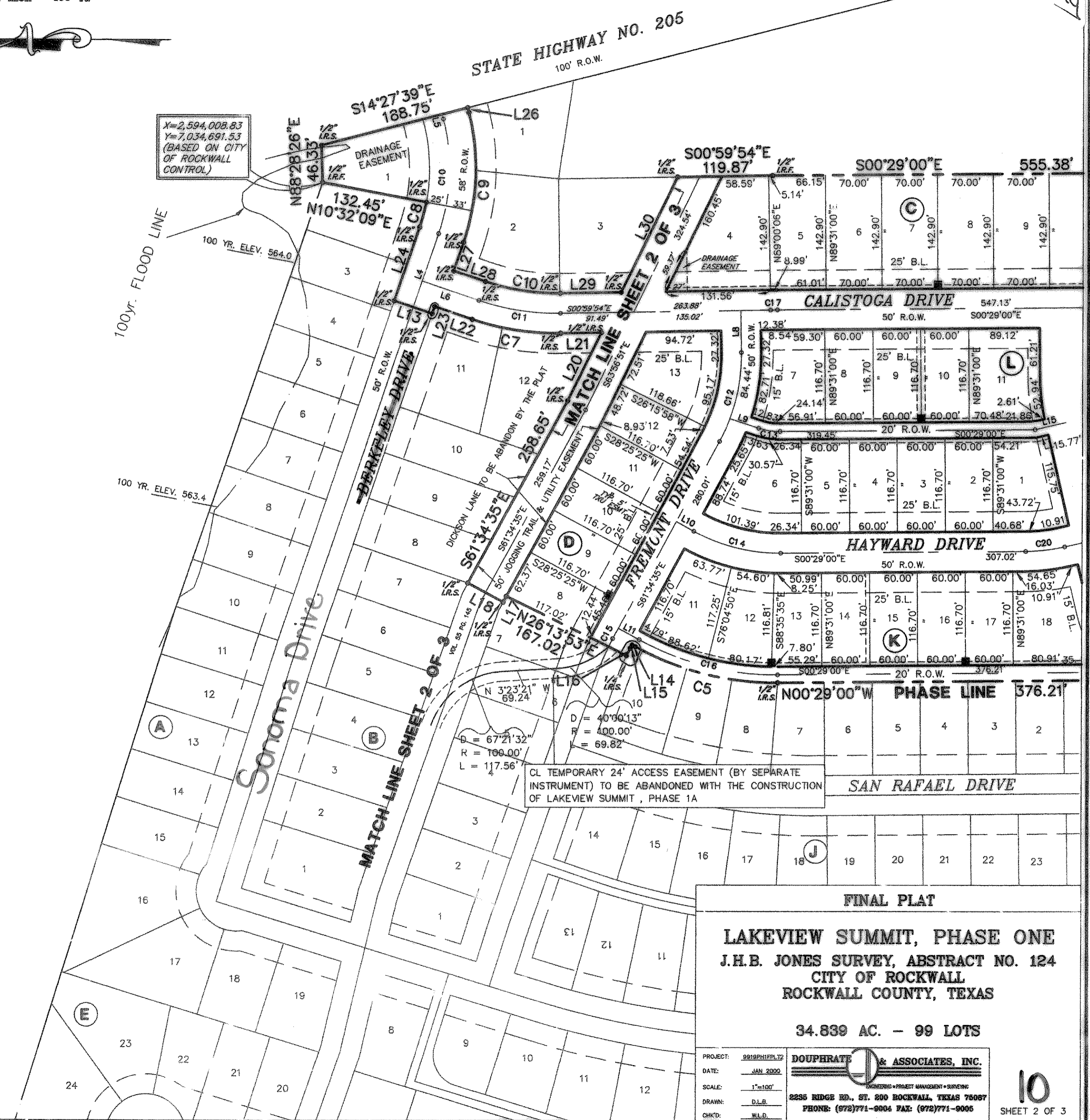


(IN FEET)
1 inch = 100 ft.

OWNER/DEVELOPER:
PULTE HOMES OF TEXAS, L.P.
1431 GREENWAY DRIVE, SUITE 700
IRVING, TEXAS 75038
(972) 751-1489

LEGEND

 10' x 10' 120 TRANSFORMER EASEMENT



FINAL PLAT
LAKEVIEW SUMMIT, PHASE ONE
 J.H.B. JONES SURVEY, ABSTRACT NO. 124
 CITY OF ROCKWALL
 ROCKWALL COUNTY, TEXAS
 34.839 AC. - 99 LOTS

PROJECT: 0818PHPLAT1
 DATE: JAN 2000
 SCALE: 1"=100'
 DRAWN: D.L.R.
 CHECKED: M.L.D.

DOUPRAT & ASSOCIATES, INC.
 2256 RIDGE RD., ST. 200 ROCKWALL, TEXAS 75087
 PHONE: (972) 771-0004 FAX: (972) 771-0005

10
SHEET 2 OF 3

Lakeview Summit