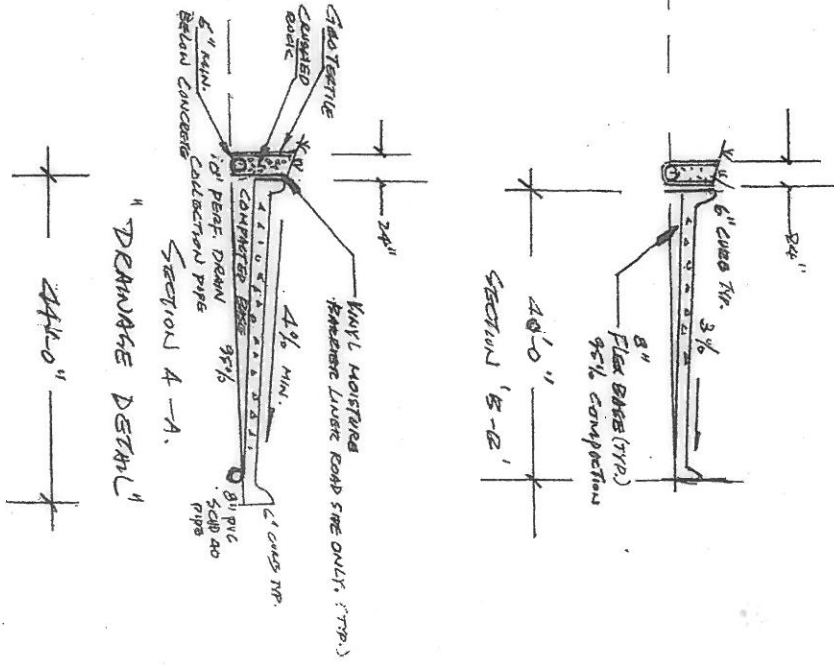
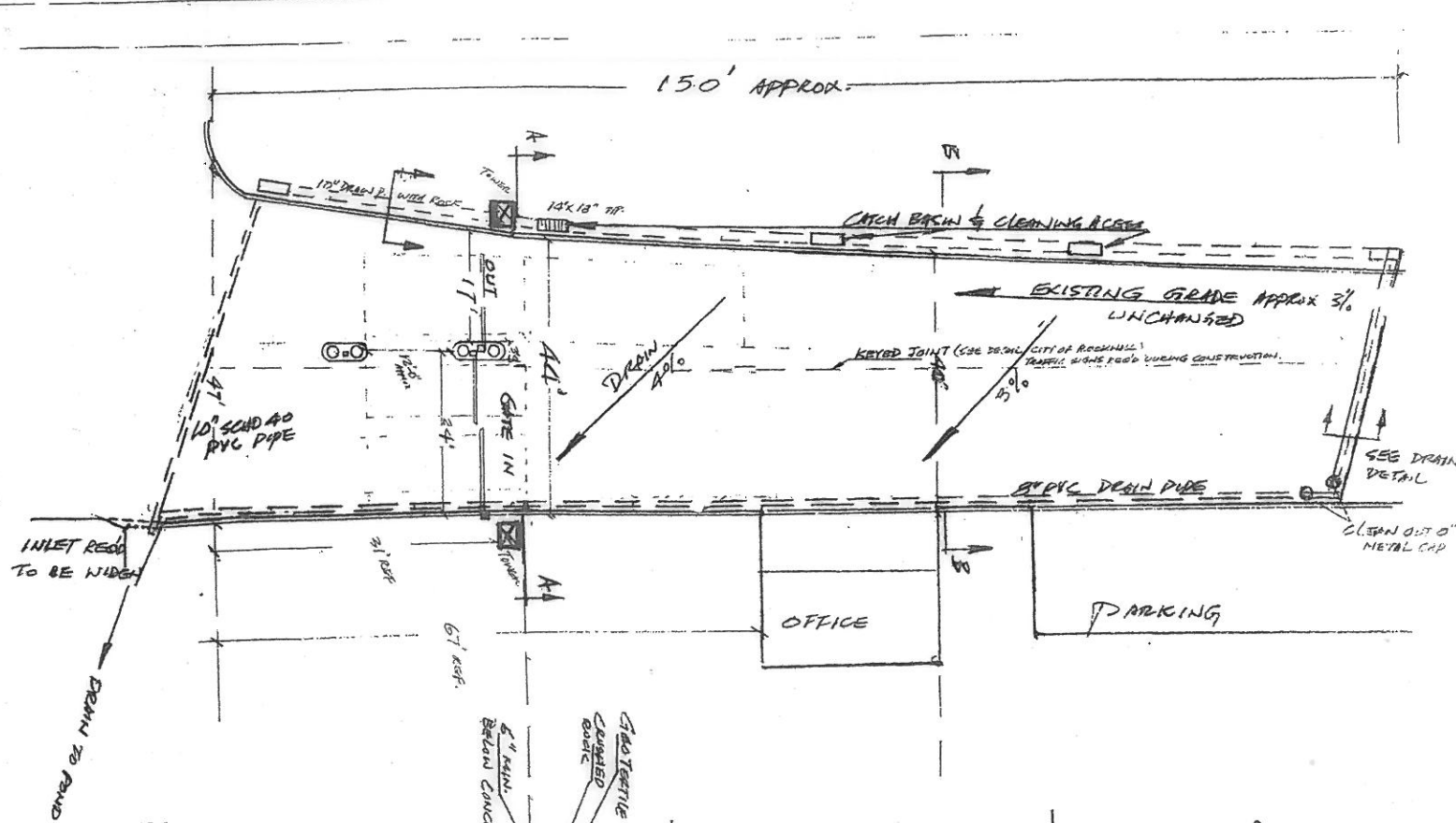


Monitor 8/15/2011  
 Phil Rob

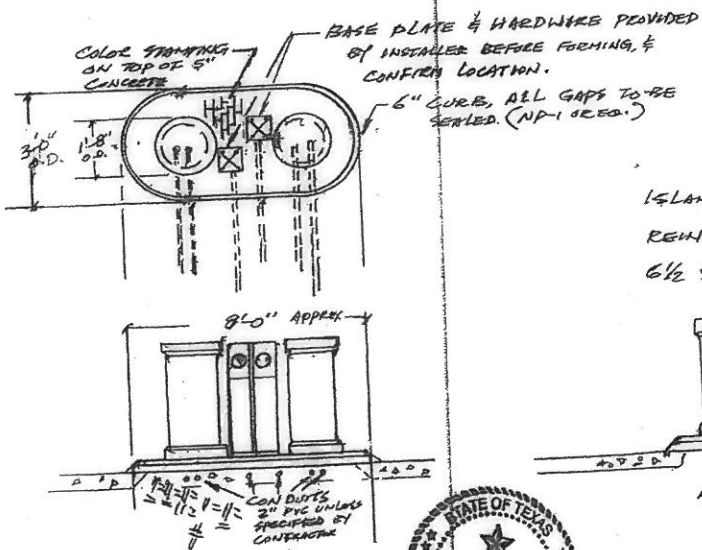


FIDELMAN ENTRANCE OF LAKESIDE VILLAGE  
 ROCKHILL, TX.



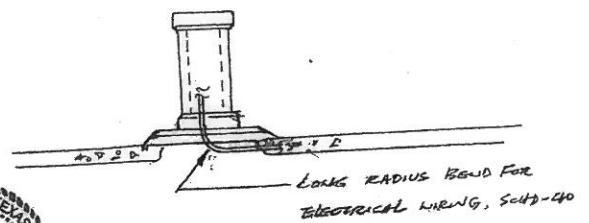
CONCRETE TO BE 6" THICK  
 REINFORCED WITH #4 REBAR 18" ON  
 6" SACK MIN. WITH EXPANSION  
 JOINT EVERY 20' MIN. (NEED HEAD ON ADA: 1/2" CENTER OF STREET  
 (4000 PSI MIN.))

ISLAND W/ TRAFFIC CONTROL  
 CONCRETE DETAIL.



NOTE: CONSULT INSTALLER  
 FOR SPECIAL TRADE  
 REQUIREMENT BESIDE  
 CONDUITS.

ISLAND CONCRETE TO BE 1" THICK  
 REINFORCED WITH #4 REBAR 18" C  
 6 1/2 SACK MIN. (4000 PSI MIN.)



Phil Rob 8/14/2011

3-0225 - 50 SHEETS - 5 SQUARES  
 3-0226 - 100 SHEETS - 5 SQUARES  
 3-0227 - 200 SHEETS - 5 SQUARES