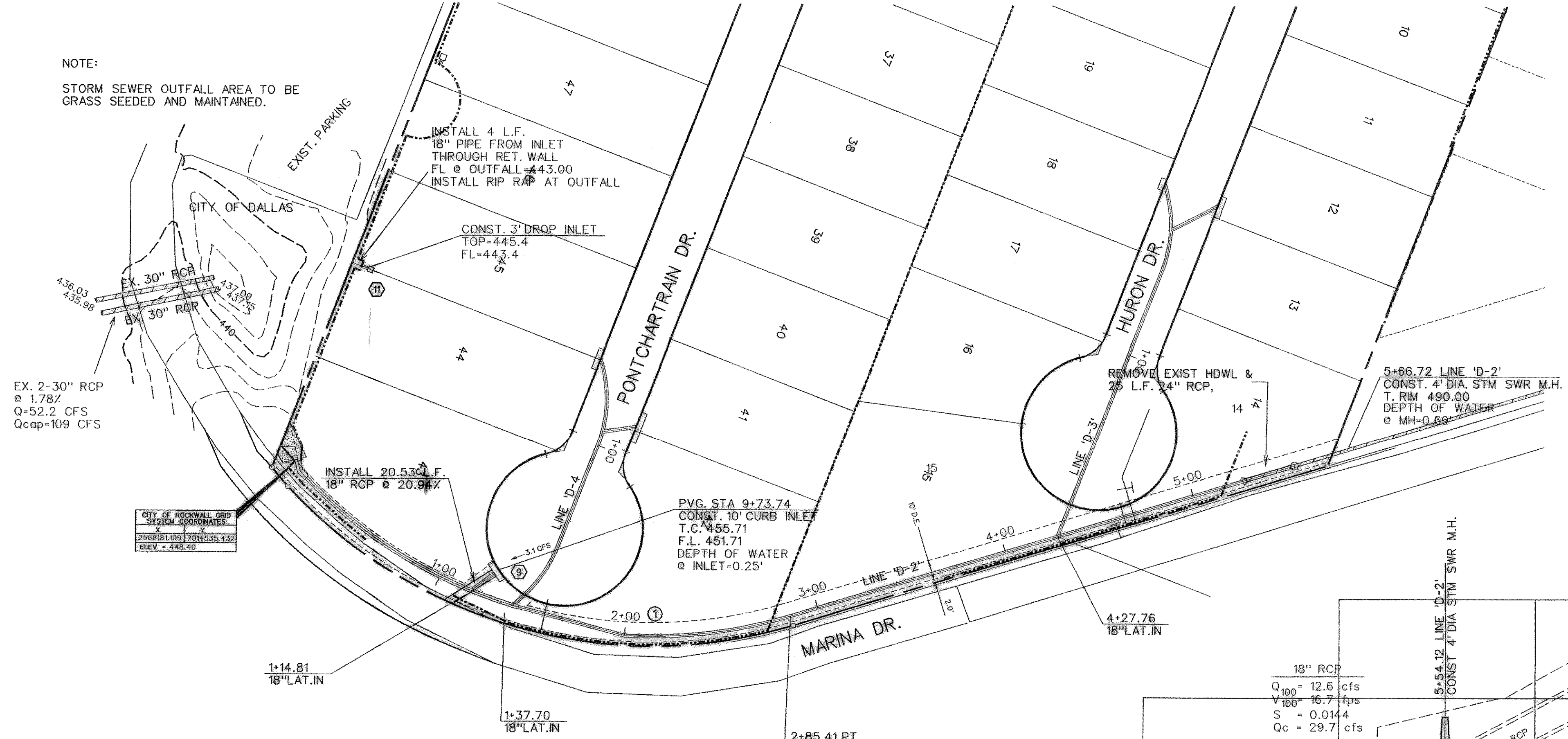
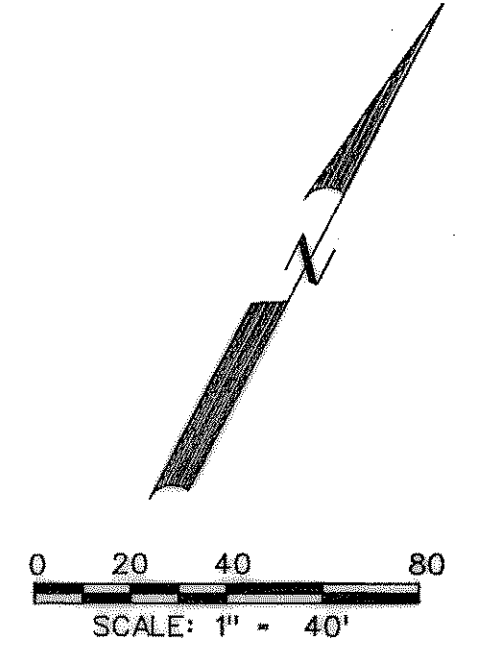


NOTE:  
STORM SEWER OUTFALL AREA TO BE GRASS SEEDED AND MAINTAINED.

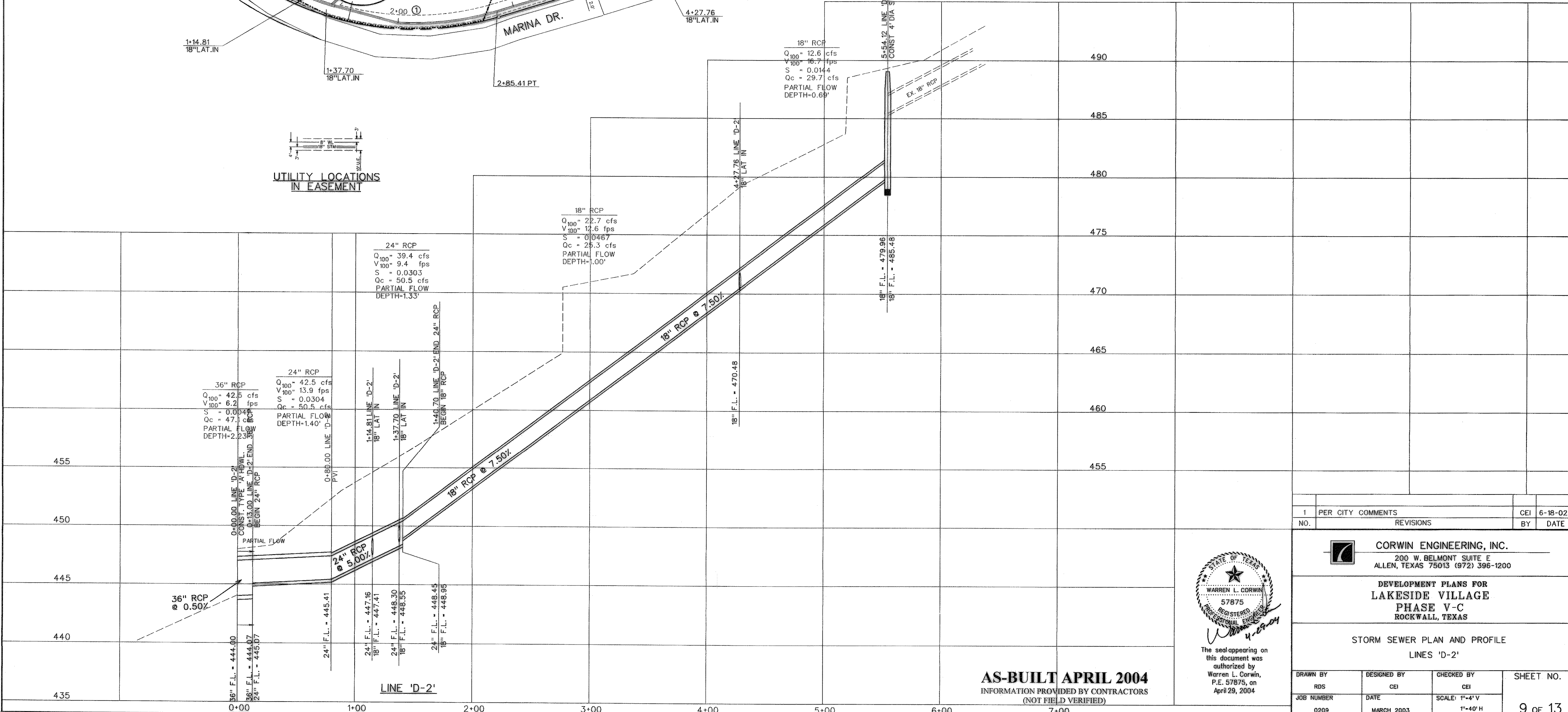
STORM SEWER CURVE DATA				
CURVE NO.	①	②	③	④
Δ	65° 58' 35"	0	0	0
R	243.00'	'	'	'
T	157.73'	'	'	'
L	279.82'	'	'	'



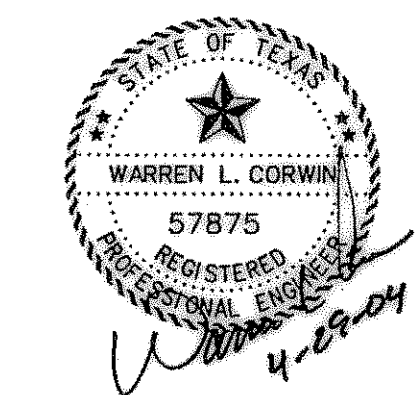
CITY OF ROCKWALL GSD SYSTEM COORDINATES	
2588181.00	2014335.432
ELEV = 448.40	

BENCHMARKS:  
"□" found on the top of curb of the northwest corner of railroad bridge @ Village Drive.  
ELEVATION = 506.23

UTILITY LOCATIONS IN EASEMENT



NO.	PER CITY COMMENTS	CEI	6-18-02
1	REVISIONS	BY	DATE



The seal appearing on this document was authorized by Warren L. Corwin, P.E. 57875, on April 29, 2004

**CORWIN ENGINEERING, INC.**  
200 W. BELMONT SUITE E  
ALLEN, TEXAS 75013 (972) 396-1200

DEVELOPMENT PLANS FOR  
**LAKEVILLE VILLAGE**  
PHASE V-C  
ROCKWALL, TEXAS

STORM SEWER PLAN AND PROFILE  
LINES 'D-2'

**AS-BUILT APRIL 2004**  
INFORMATION PROVIDED BY CONTRACTORS  
(NOT FIELD VERIFIED)

DRAWN BY	DESIGNED BY	CHECKED BY	SHEET NO.
RDS	CEI	CEI	9 OF 13
JOB NUMBER	DATE	SCALE: 1"=4' V 1"=40' H	
0209	MARCH 2003		